



3 ROOM APARTMENT, 4810 GMUNDEN

Traunseeblick 1

Object number: OUKF1

[View and rent online](#)

Period	30/05/ - 30/06/2025
Number of persons	2
Total incl. VAT.	€ 3.353,56
Security deposit	€ 2.600,00

WELCOME TO OUR HOLIDAY APARTMENT WOLFIS
TRAUNSEEBLICK 1 Enjoy your holiday in our beautiful Gmunden with many sights and the Traunsee.



Living space

58m²



Maximum occupancy

4 Persons



Complete accommodation [?]

1 private bathroom 1 Separated bedroom 1 Living-Sleepingroom



1. floor



Check-in

15:00 - 21:30 Clock



Check-out

05:00 - 11:00 Clock

Sleeping options

Sleeping room



1x Double bed (1,80 m x 2 m)

Living and sleeping



1x Sofa bed (2 persons)

Descripton of accommodation

Enjoy your holiday in our beautiful Gmunden with many sights and the Traunsee. Our holiday flat Traunseeblick 1 is located on the first floor and offers you a cosy eat-in kitchen with a large dining table and a living room with a pull-out sofa bed. In this quiet one-way street, 100 m from the lake, you will find the 57m² holiday flats on the 1st and 2nd floor (without lift) with a view of Lake Traunsee and Traunstein.

There is enough space for 4 people to relax and feel good in a cosy kitchen with dining area, living room with west-facing balcony, a bedroom and a bathroom with shower. There is a free car park directly in front of the house.

Equipment features



Basic equipment

- Balcony
- TV
- Towels
- Private parking space
- Hairdryer
- Internet/Wifi
- Bedclothes
- Private toilet
- Aircondition



First supply

- Toilet paper
- Soap
- shampoo
- Nespresso capsules



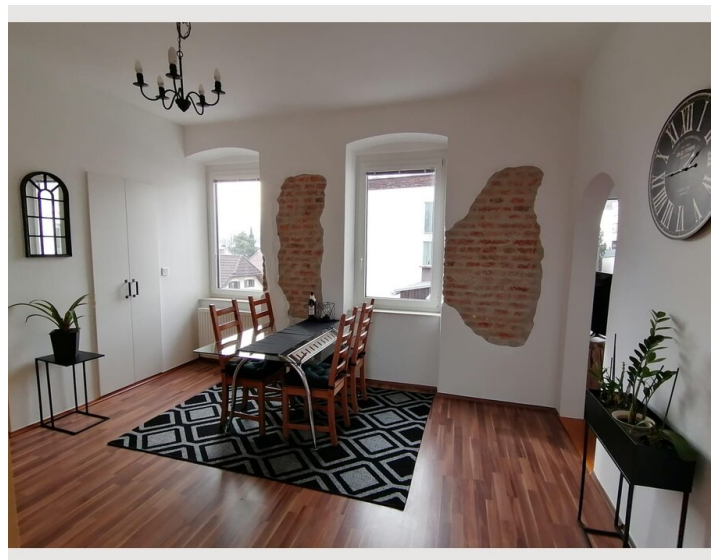
Kitchen

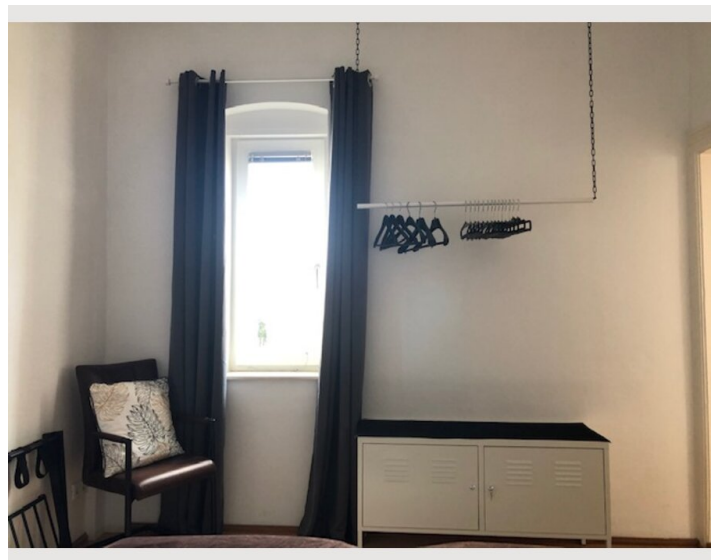
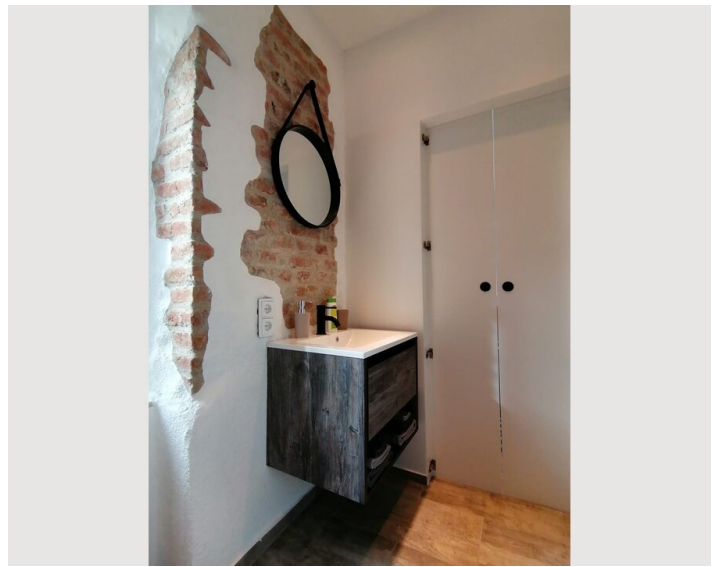
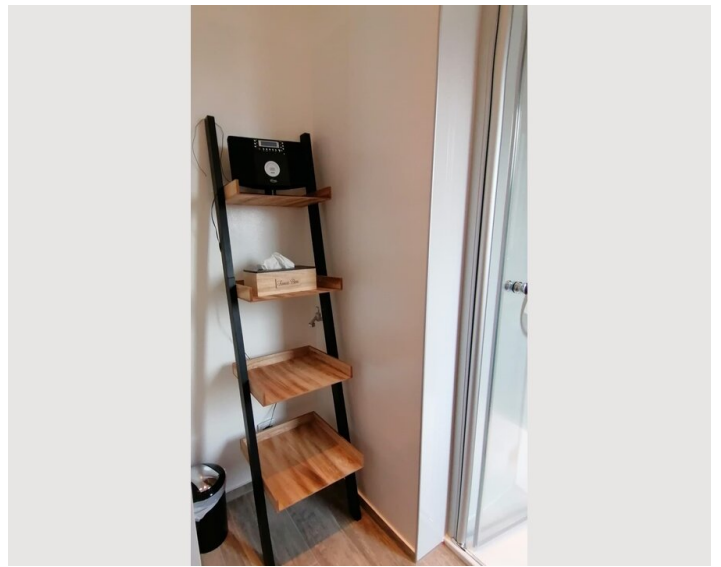
- Private kitchen
- Glasses/Tableware
- Dishwasher
- Cooking utensils
- Espresso machine
- Microwave

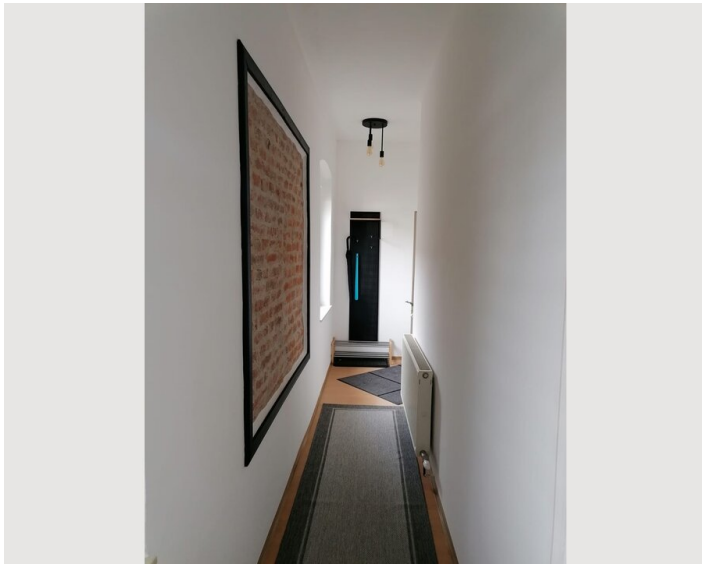
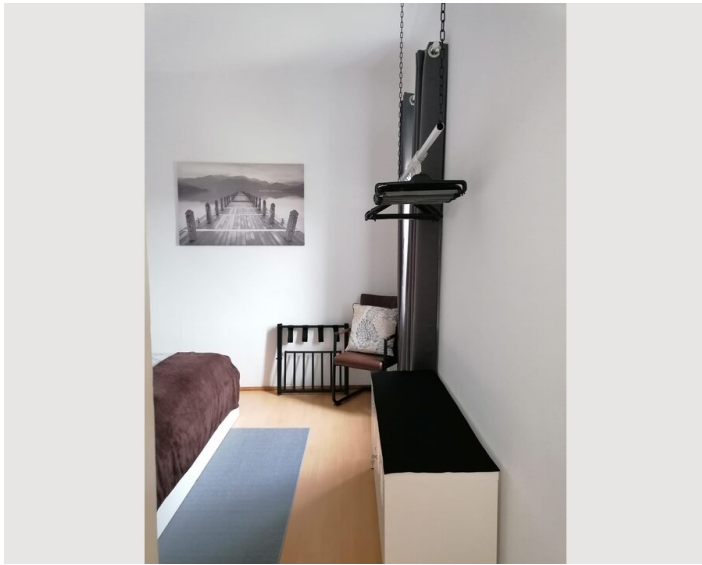
Informations

- Smoking not allowed
- Pets forbidden
- Bicycle room free of charge
- Private entrance
- Regular cleaning free of charge

Picture gallery







Infrastructure

📍 Gmunden - centre within 5-10 min. walking distance

🚊 Tram stop within 1 min. walking distance

🚆 Gmunden railway station can be reached by tram in 8 minutes or on foot in approx. 25 minutes.

On the Esplanade, 100 metres away, you will find shops, cafés and restaurants.

Furthermore, the tram stop is only 1 minute away.

The nearest supermarket (Spar) is only 600 metres away and is easily accessible on foot or by tram.

Location

