



STUDIO APARTMENT, 1150 VIENNA

sunny city flat near Westbahnhof

Object number: METL1

[View and rent online](#)

Period	11/06/ - 11/07/2025
Number of persons	2
Total incl. VAT.	€ 1.305,33
Security deposit	€ 900,00

The approx. 31 m², completely renovated and fully equipped apartment convinces with high-quality and modern equipment as well as a central location and excellent connections to the public transport system of Vienna.



Living space

31m²



Maximum occupancy

1 Person



Complete accommodation [?]

1 private bathroom 1 Living-Sleepingroom



1. floor

Elevator available



Check-in

10:00 - 20:00 Clock



Check-out

07:00 - 20:00 Clock

Sleeping options

Living and sleeping



1x Double bed (1,40 m x 2 m)

Descripton of accommodation

The apartment is situated on the first floor of the apartment house and offers a south-facing open view and insight free. In addition, the entire apartment has underfloor heating and is barrier-free accessible. Toilet and bathroom are separated. Through a small anteroom with a wardrobe, you enter the friendly and bright main room with a modern, high-quality and fully equipped small kitchen. A discreet wall of wardrobe creates a slight separation between the sleep and the kitchen area. Window blinds ensure darkness for a good sleep. The apartment is located on a busy street, but any street noises are completely cut off by triple glazed windows. It With smart-TV and fiber optic internet connection the apartment can be used as home office at once.

Equipment features



Basic equipment

- Internet/Wifi
- Private washing machine
- Towels
- Vacuum cleaner
- Cleaning utensils
- TV
- Bedclothes
- Private toilet
- Iron & ironing board
- Hairdryer



First supply

- Toilet paper
- Soap
- shampoo
- Fridge filling on request



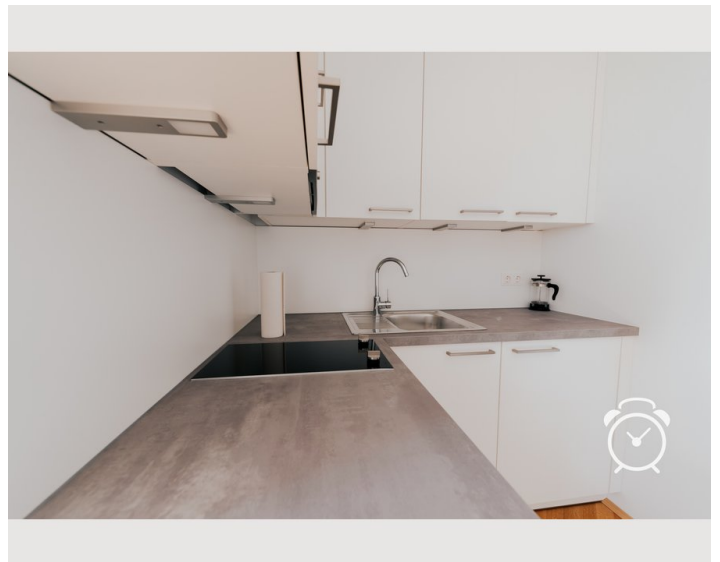
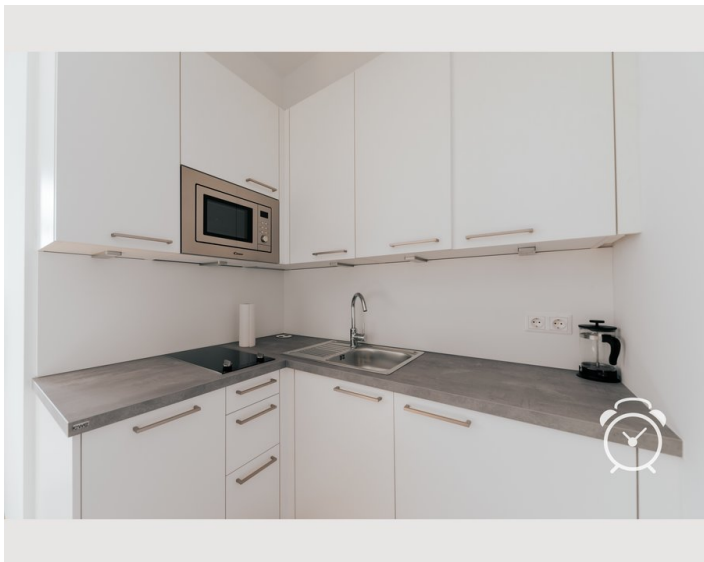
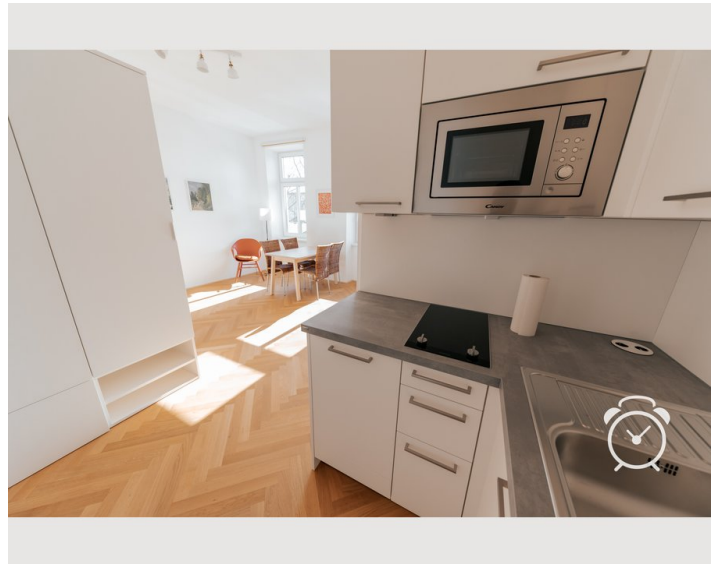
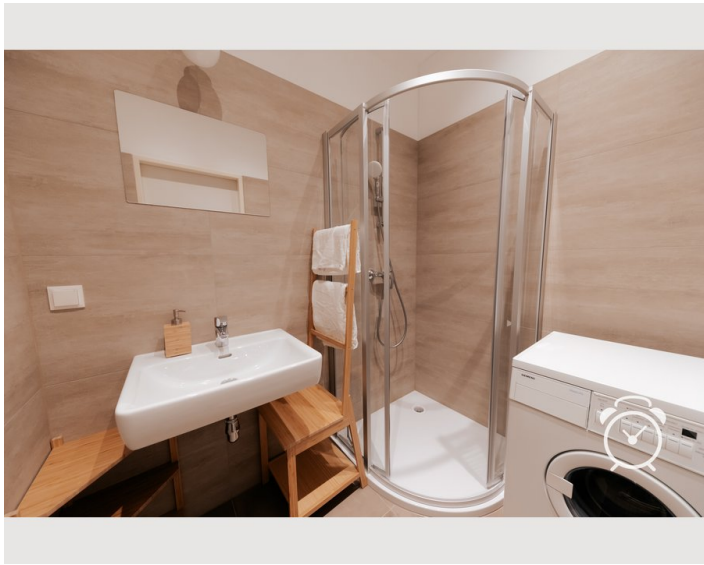
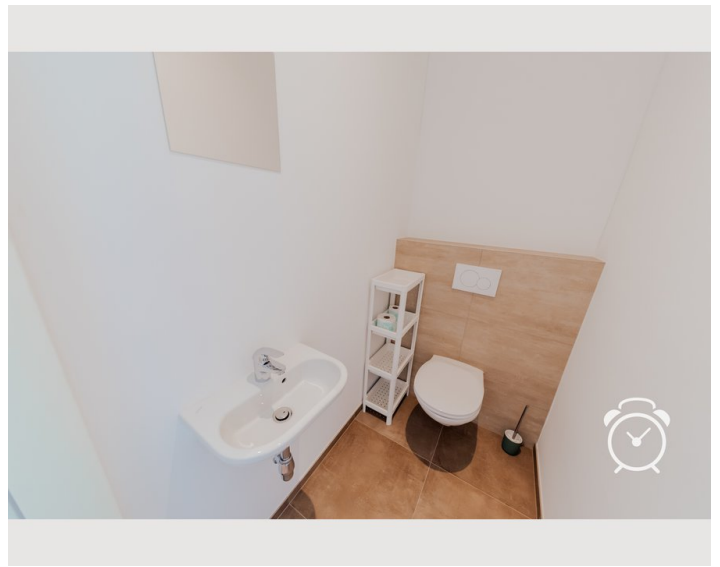
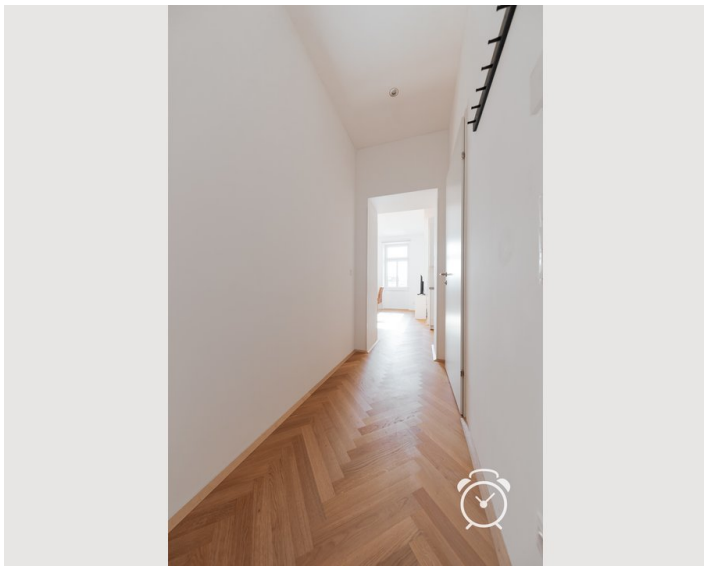
Kitchen

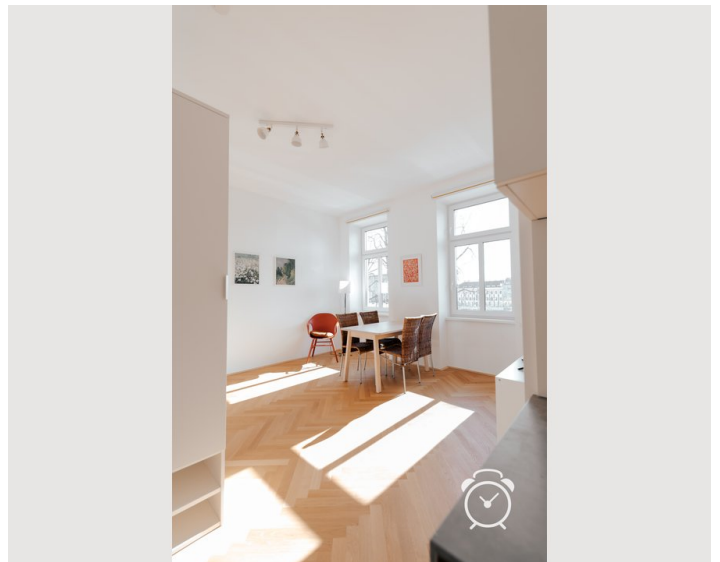
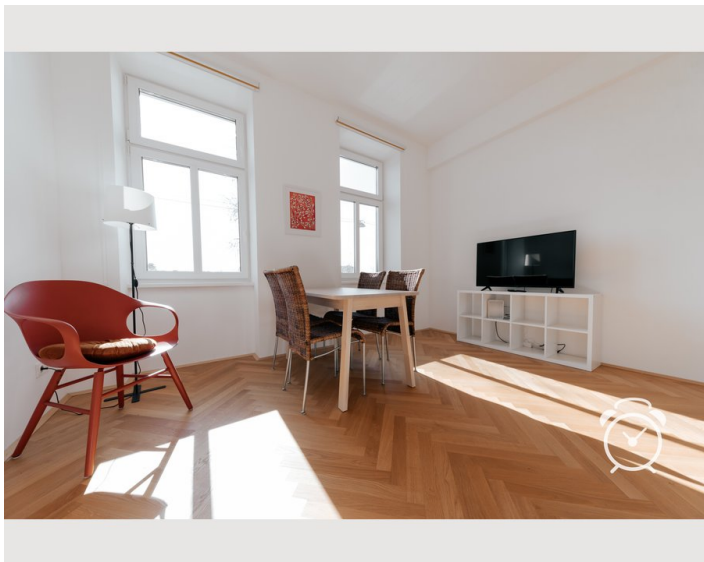
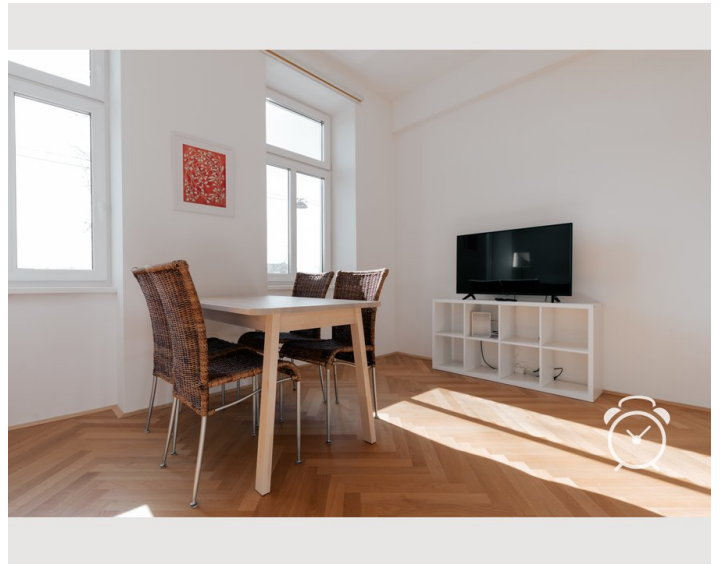
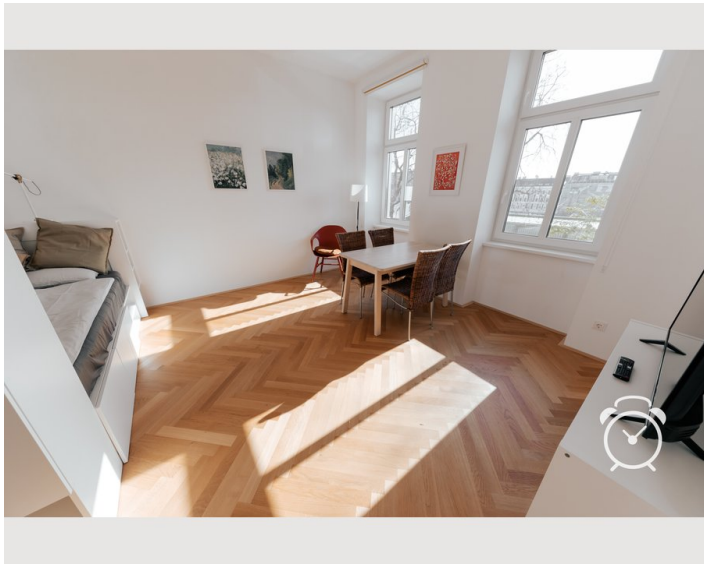
- Private kitchen
- Filter coffee
- Microwave
- Glasses/Tableware
- Dishwasher

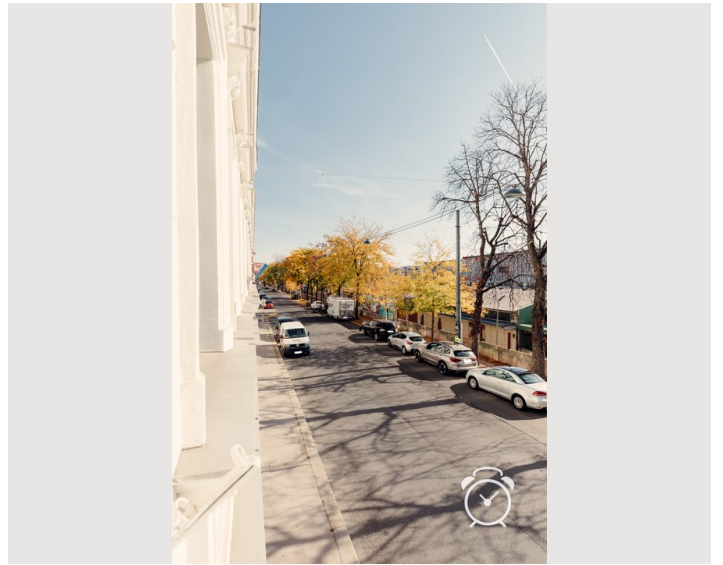
Informations

- Not suitable for children
- Short-term parking zone subject to a charge
- Private entrance
- Regular cleaning at extra cost
- Smoking not allowed
- Desk/Workplace
- Pets forbidden
- Bicycle room free of charge

Picture gallery







Video

Goto Video



Infrastructure



railstation Westbahnhof with shopping center,
500 meters footwalk



via U3 and CAT in 50 minutes (total time)



Lidl & Billa in 5 minutes footwalk



via U3 in 18 minutes (total time) to
Stephansplatz

The location in the heart of the 15th district of Vienna is above all characterized by a very good infrastructure. There are several public transport stops within a 2-5 minute walk (subway: U3 and U6, tram lines: 49 and 9, bus: 12A). The Westbahnhof (railway station), as well as the train to the airport (ViennaAirport Lines) are only 500 meters away. The West Autobahn (Highway) can be reached by car within 15 minutes. Grocery stores, pharmacies and restaurants are also just a few minutes' walk away. The event center "Wiener Stadthalle" is an only 9 minutes walk. All sights and attractions can be reached by public transport in max. 30 minutes. In 1 minute walk distance there is a public rent-a-bike station.

Location

