



2 ZIMMER WOHNUNG, 1040 VIENNA

Modern apartment at the Vienna central train station

Object number: NAF01

[View and rent online](#)

Period	06/12/2025 - 06/01/2026
Number of persons	2
Total incl. VAT.	€ 2.088,18
Security deposit	€ 1.600,00

The apartment is in the heart of Vienna. The apartment is right near Vienna Central Station (3 minutes walk to the nearest entrance). Underground (U1) is 200 meters away and there are numerous bus and tram connections.



Living space

48m²



Maximum occupancy

2 Persons



Complete accommodation [?]

1 Private bathroom 1 Separated bedroom 1 Living-Sleepingroom



Ground floor

Elevator available



Check-in

00:00 - 00:00 Clock



Check-out

00:00 - 11:00 Clock

Sleeping options

Sleeping room



1x Double bed (1,80 m x 2 m)

Living and sleeping



1x Sofa bed (2 persons)

Descripton of accommodation

The apartment is very modern, is located in the inner courtyard and is surrounded by a garden. So you live in the heart of Vienna and at the same time in a very quiet location. The apartment is completely newly furnished and is equipped with high-speed internet (150 Mbit/s) and a smart TV. In addition, you have the fully equipped kitchen at your disposal. Several shops, restaurants and supermarkets can be reached within a 5-minute walk. There are numerous national and international connections directly from the main train station. There are several direct train connections to the airport (only 15 minutes from the main train station).

Equipment & Features



Basic equipment

- Garden sharing
- TV
- Private dryer
- Towels
- Vacuum cleaner
- Cleaning utensils
- Internet/Wifi
- Private washing machine
- Bedclothes
- Private toilet
- Iron & ironing board
- Hairdryer



First supply

- Toilet paper
- Soap
- Fridge filling on request



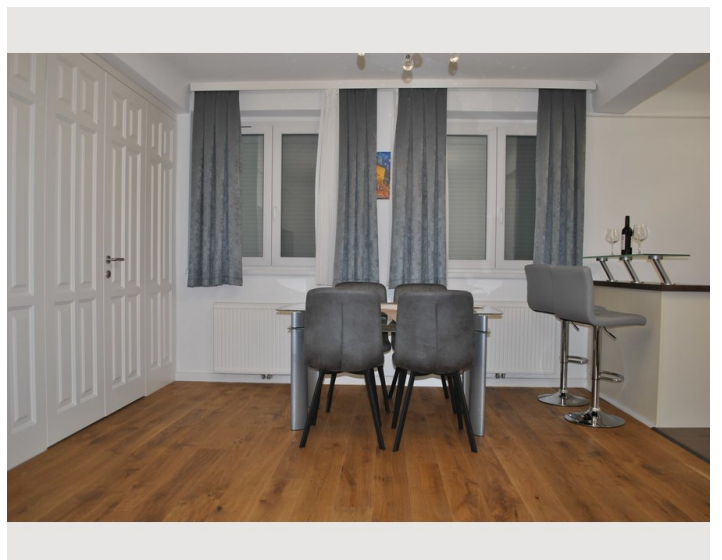
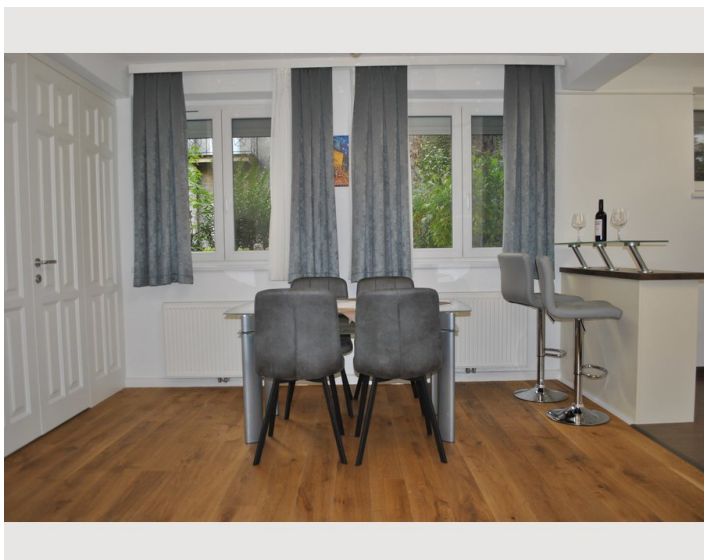
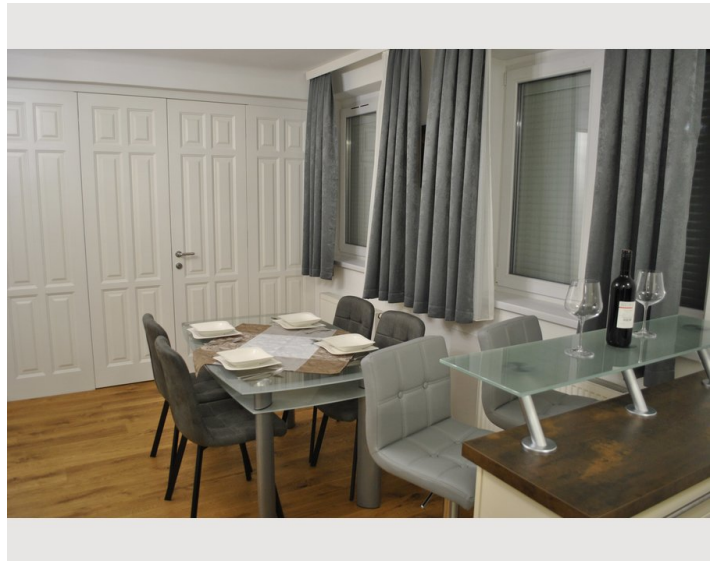
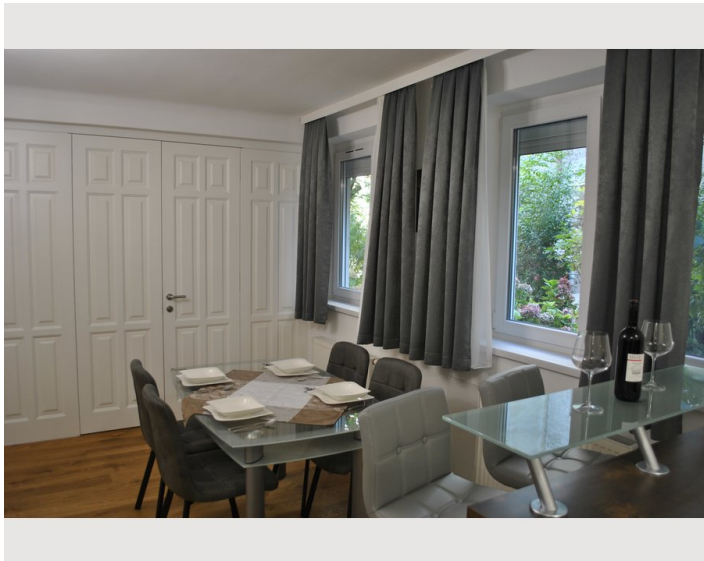
Kitchen

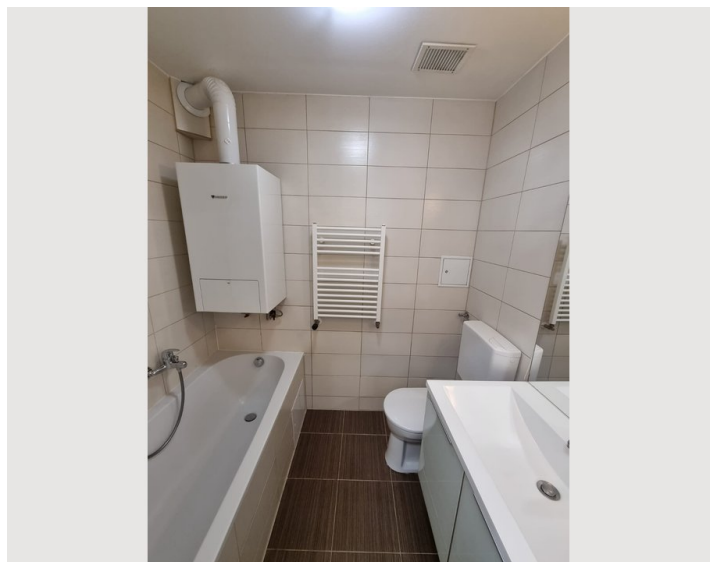
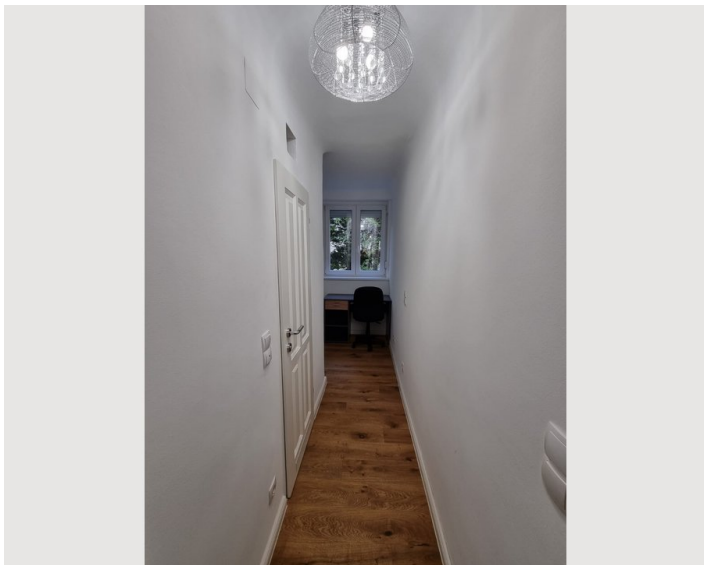
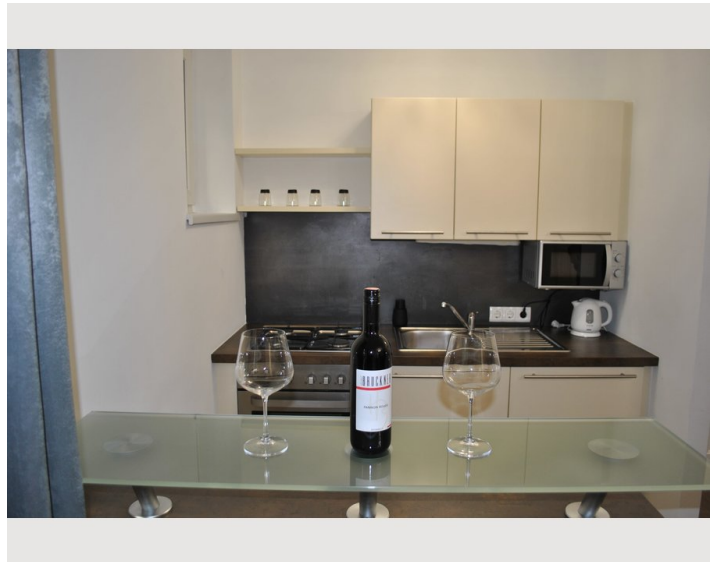
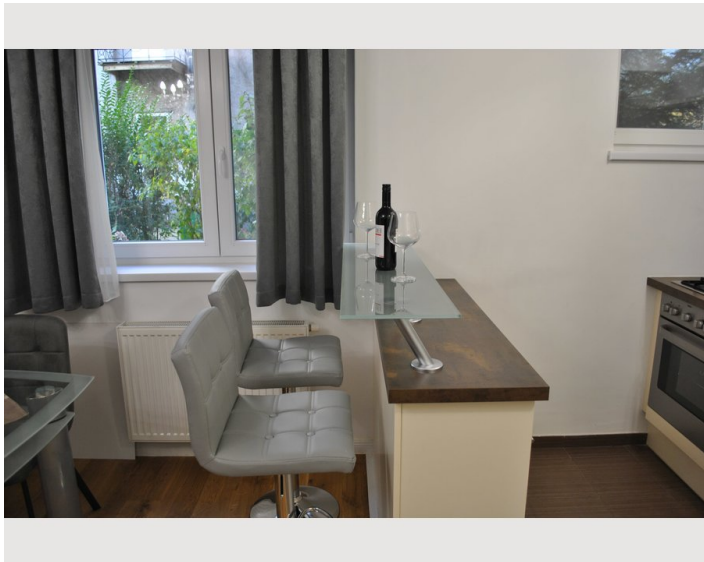
- Private kitchen
- Cooking utensils
- Glasses/Tableware
- Microwave

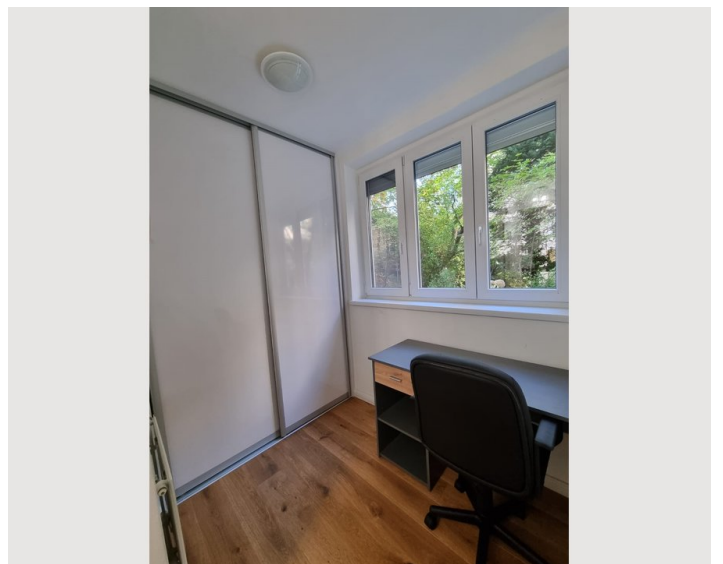
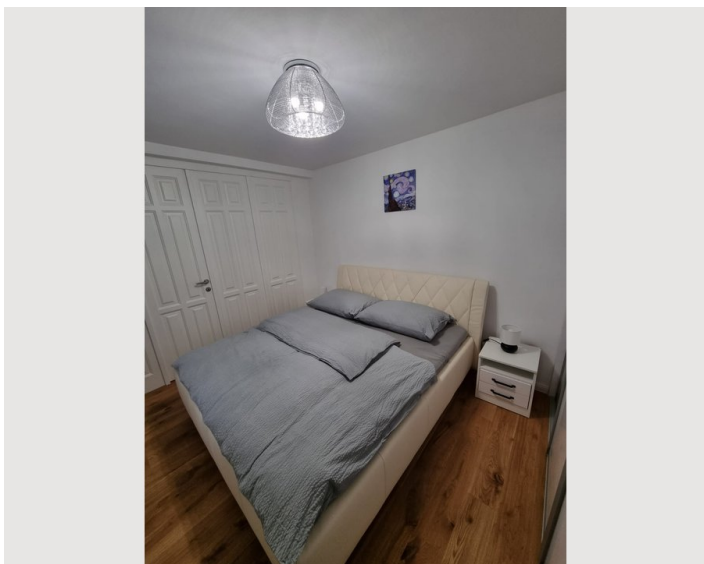
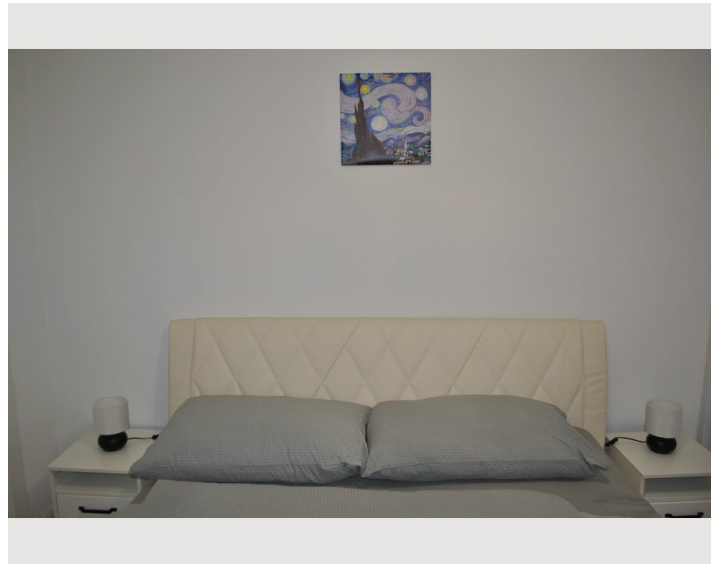
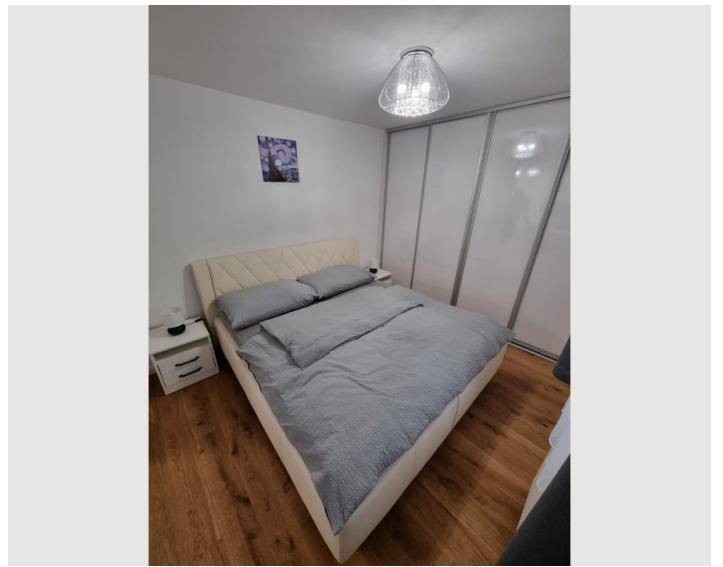
Informations

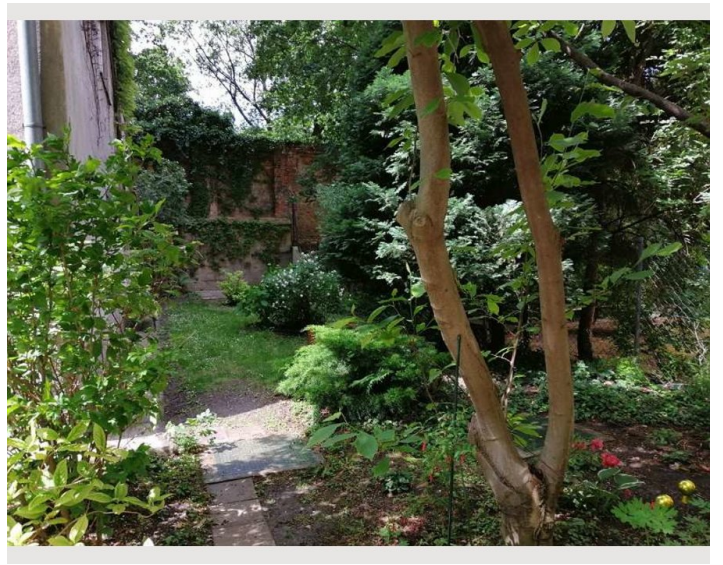
- Suitable for construction workers
- Smoking not allowed
- Desk/Workplace
- Regular cleaning at extra cost
- Suitable for children
- Short-term parking zone subject to a charge
- Pets on request
- Bicycle room free of charge

Picture gallery

















Infrastructure

- | | |
|--|--|
|  Bus 13A, 120 meters |  Bus terminal Südtirolerplatz, 300 meters |
|  Vienna Main Train Station, 300 Meter |  Billa supermarket, 250 meters |
|  15 minutes from the main train station |  Trams 1, 18, O, D, 400 meters |
|  Underground (U1), 200 meters |  Hofer supermarket, 290 meters |

The Billa supermarket is 250 meters and the Hofer supermarket is 290 meters from the apartment. The "Interspar Pronto" supermarket in the main train station is even open on Sundays. The nearest pharmacy (Stern-Apotheke) is only 350 meters away. In the main train station there is a post office, ATMs, several restaurants and shops of all kinds. You need 2 stations on the subway to Karlsplatz and 3 stations to Stephansplatz. Belvedere Palace is just 900 meters away.

Location

