



STUDIO APARTMENT, 1060 VIENNA

Wellness oasis with terrace in the middle of the city

Object number: MARM15

[View and rent online](#)

Period	20/12/2025 - 20/01/2026
Number of persons	2
Total incl. VAT.	€ 2.042,17
Security deposit	€ 1.500,00

Very quiet apartment with a large terrace in the middle of the city.



Living space

55m²



Maximum occupancy

4 Persons



Complete accommodation [?]

1 Private bathroom 1 Living-Sleepingroom



Ground floor

Elevator available



Check-in

15:00 - 00:00 Clock



Check-out

00:00 - 11:00 Clock

Sleeping options

Living and sleeping



1x Double bed (1,40 m x 2 m)



1x Double bed (1,60 m x 2 m)

Descripton of accommodation

The lovingly furnished terrace apartment offers everything that makes the Vienna stay a relaxing experience.

The apartment is equipped with two large double beds, cozy sofa area, bathroom with bathtub and a kitchenette including indoor and outdoor dining area.

The apartment is fully furnished, with high speed internet, and gas/heating included in the price.

The sunny terrace with a cozy garden atmosphere makes it particularly attractive for guests who, despite the central location, do not want to give up the outdoor feeling and want to enjoy a busy day on a private terrace.

Equipment & Features



Basic equipment

- Terrace
- Internet/Wifi
- Private washing machine
- Towels
- Vacuum cleaner
- Cleaning utensils
- Garden sharing
- TV
- Bedclothes
- Private toilet
- Iron & ironing board
- Hairdryer



First supply

- Toilet paper
- Soap
- shampoo



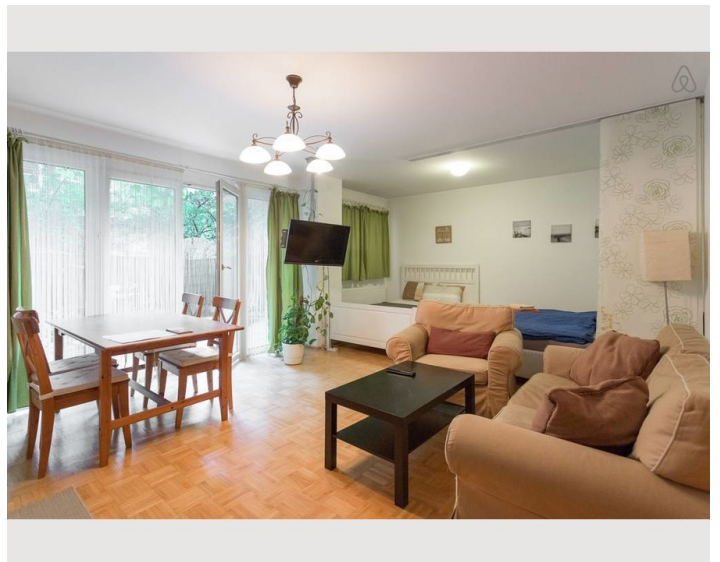
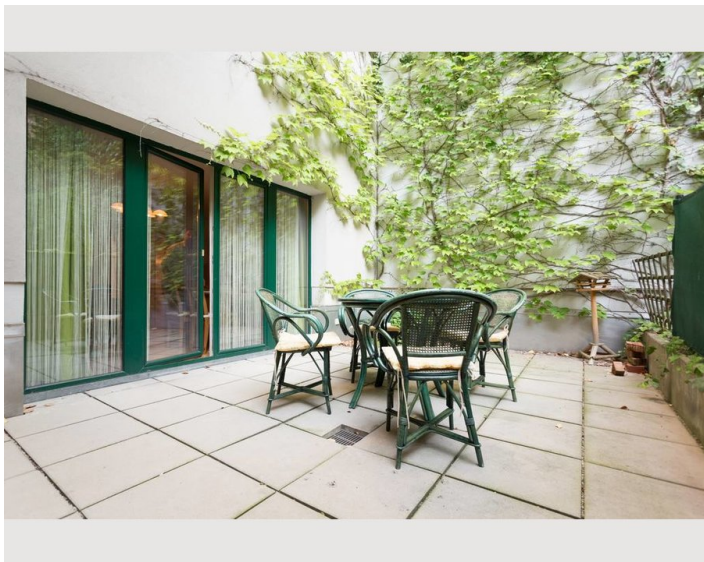
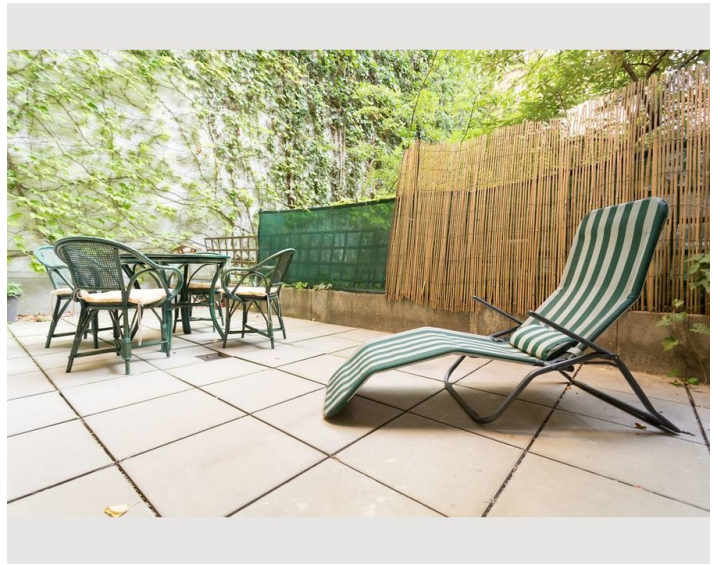
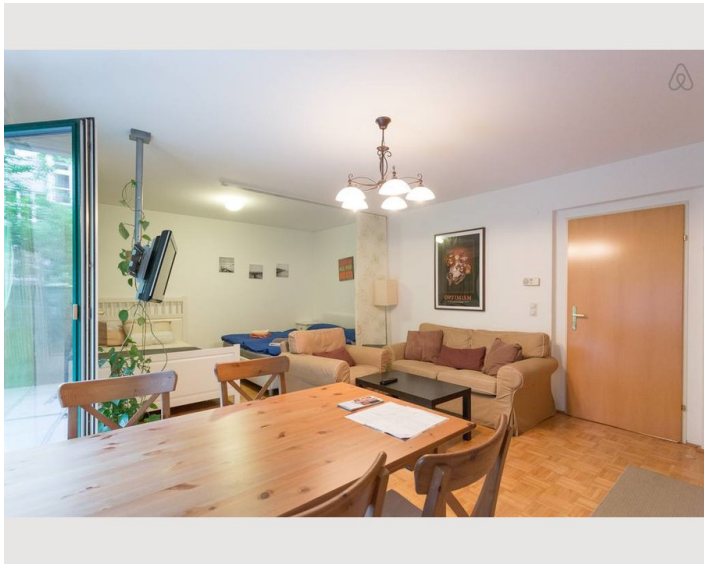
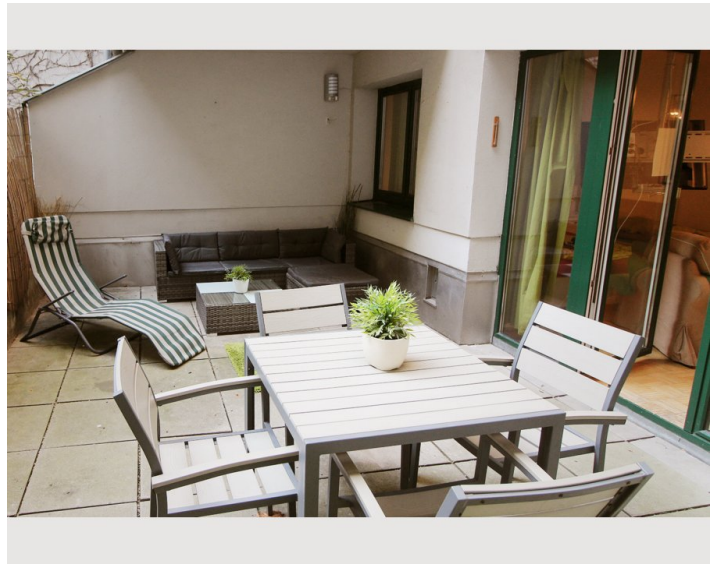
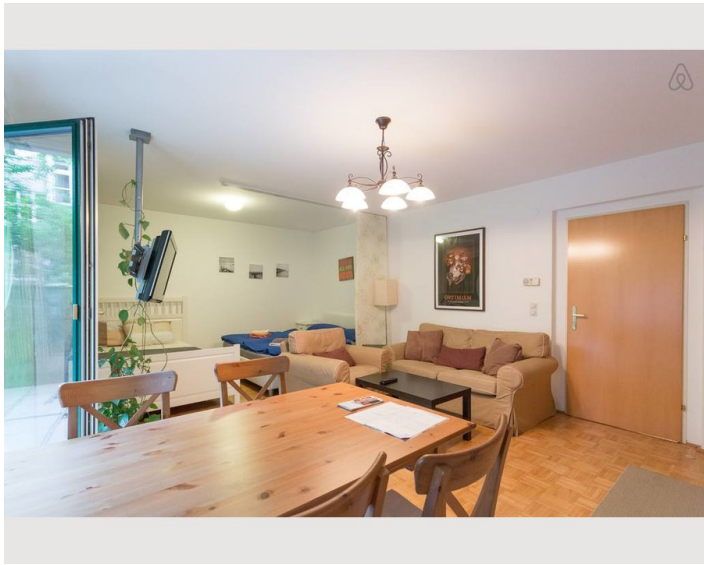
Kitchen

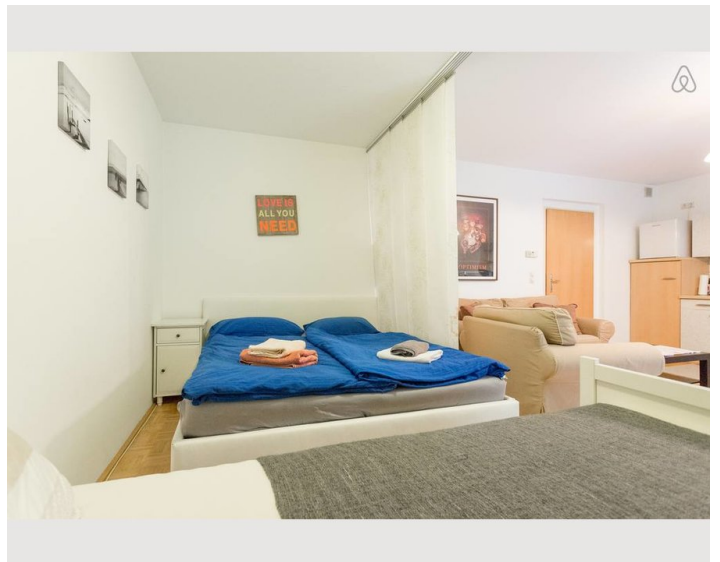
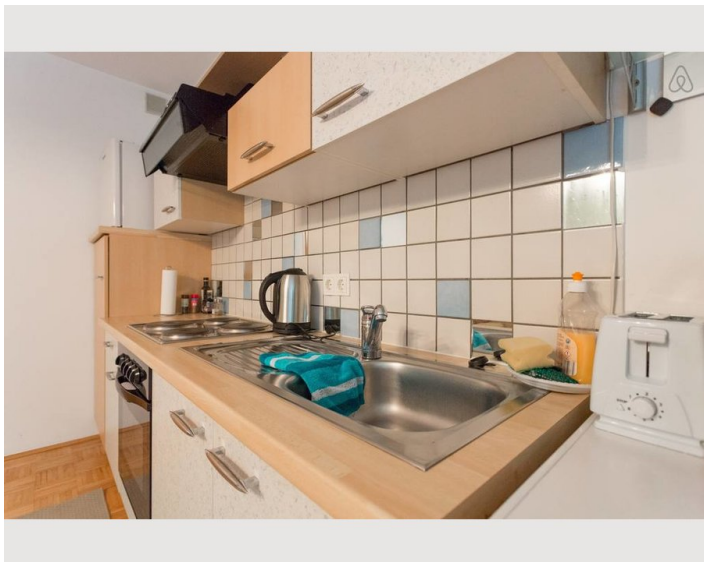
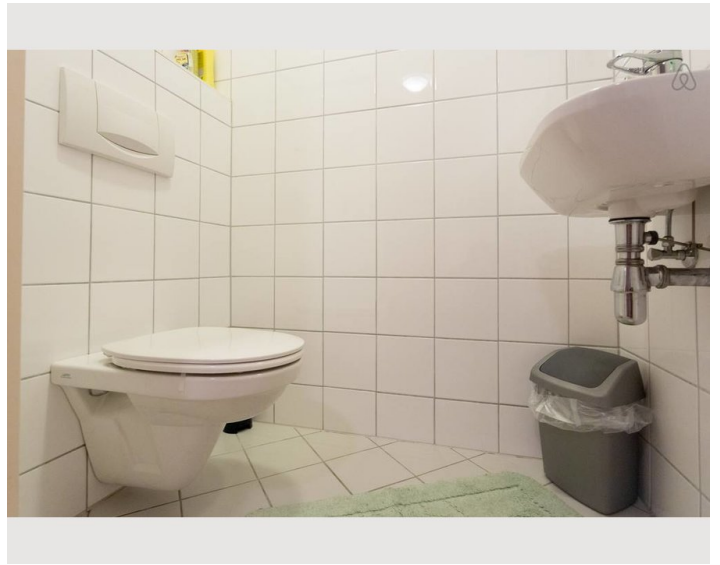
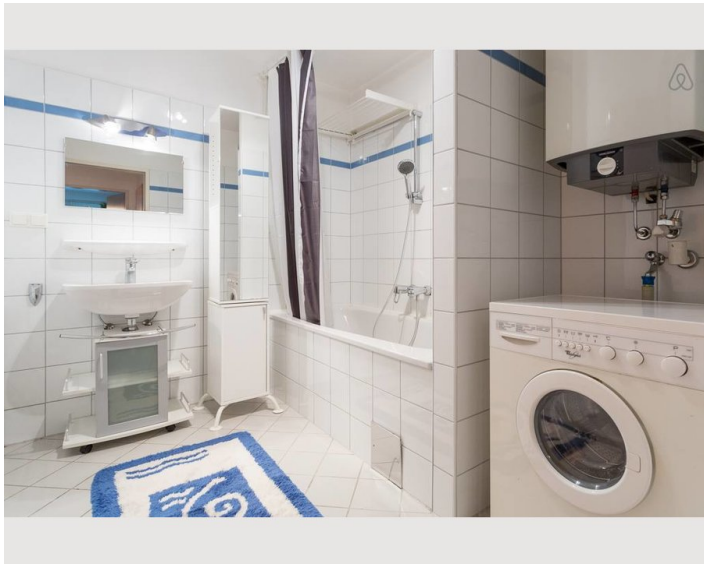
- Private kitchen
- Glasses/Tableware
- Dishwasher
- Cooking utensils
- Espresso machine
- Microwave

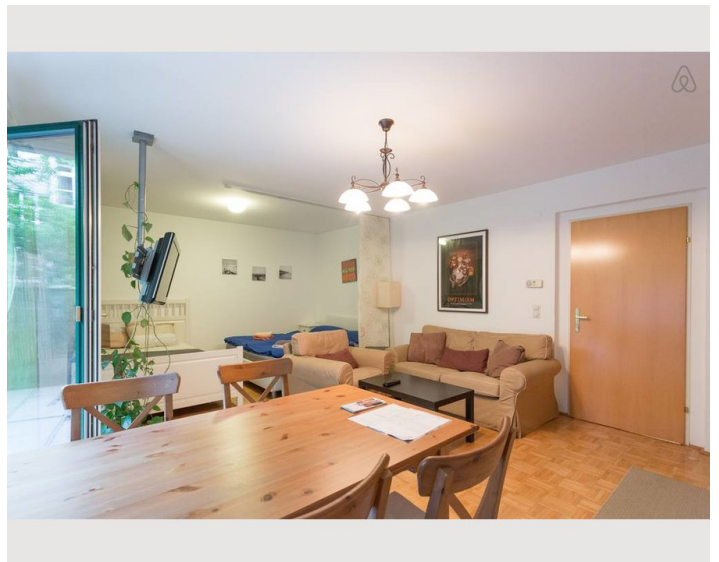
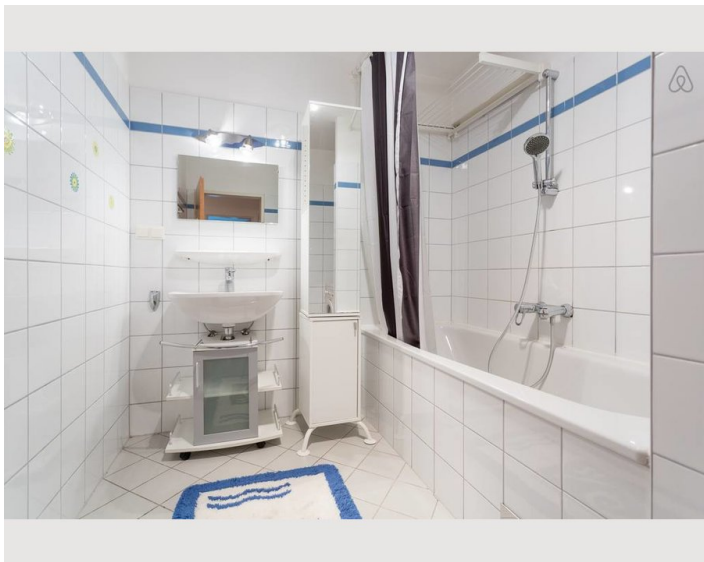
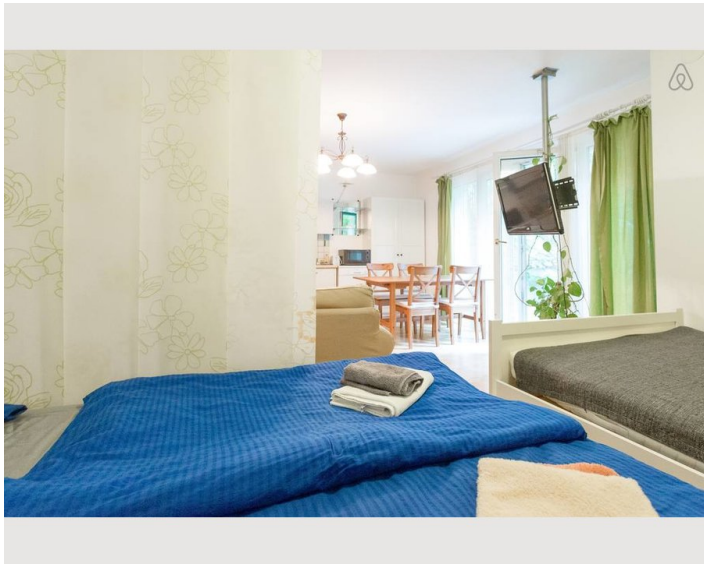
Informations

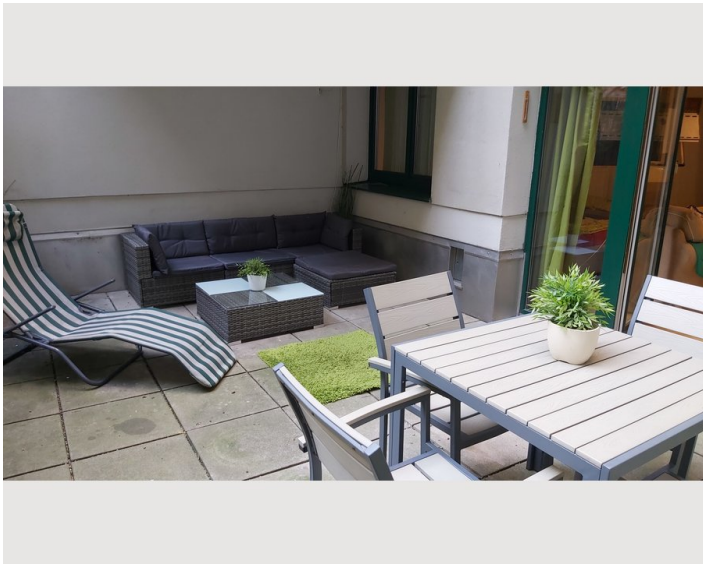
- Suitable for construction workers
- Smoking not allowed
- Desk/Workplace
- Regular cleaning at extra cost
- Suitable for children
- Short-term parking zone subject to a charge
- Pets on request
- Bicycle room free of charge

Picture gallery











Infrastructure

 Big super market "Hofer" is just 20 m from entrance. Several shops in the nearby "Mariahilferstrasse"

 Metro Station "Zieglergasse" just 280 m away

 you can walk to city centre (about 1 km)

Subway "Zieglergasse" 280 m

Mariahilferstrasse 70m

Hofer 50m

Lidl 400m

Billa 600m

Location

