



STUDIO APARTMENT, 1150 VIENNA

Charming city apartment with terrace near Westbahnhof and Schönbrunn

Object number: GWMQ1

[View and rent online](#)

Charming apartment with an open interior design, loft-like bedroom and terrace for a comfortable stay for short-term rent in a central location near Westbahnhof and Äußerer Mariahilfer Straße.

Period	18/12/2025 - 18/01/2026
Number of persons	2
Total incl. VAT.	€ 1.528,06
Security deposit	€ 1.100,00



Living space

37m²



Maximum occupancy

2 Persons



Complete accommodation ?

1 Private bathroom 1 Living-Sleepingroom



Ground floor



Check-in

13:00 - 18:00 Clock



Check-out

09:00 - 12:30 Clock

Sleeping options

Living and sleeping



1x Double bed (1,60 m x 2 m)



1x Sofa bed (1 person)

Description of accommodation

This charming and modernized, very comfortable apartment is on the mezzanine floor of a beautiful old building - very close to the outer Mariahilfer Strasse. The apartment is south-facing and therefore very friendly. A small anteroom leads to the bathroom with a shower, washing machine and toilet. The apartment is rented fully furnished and the rental price is all-inclusive (electricity, heating, internet, TV).

The apartment is designed like a loft and therefore has an open kitchen separated by floor tiles. The bedroom was separated with a high glass wall, creating an open space that is also curtained off as a private area.

The apartment is equipped with a modern air heat pump including air conditioning, W-LAN (magenta), TV incl. Magenta TV box, washing machine, shower, kitchen with large refrigerator, coffee machine and dishes, box spring bed 160cm wide, couch with coffee table, dining table with chairs, etc.

A big bonus is the city terrace with a wooden floor and a comfortable seating area (wooden bench with upholstery, a small terrace table and two chairs - ATTENTION: The photo is no longer current due to a renovation of the terrace!)

Equipment & Features



Basic equipment

- Balcony
 - Internet/Wifi
 - TV
 - Bedclothes
 - Private toilet
 - Vacuum cleaner
 - Cleaning utensils
 - Terrace
 - Music system/docking station
 - Private washing machine
 - Towels
 - Aircondition
 - Iron & ironing board
 - Hairdryer
-



First supply

- Toilet paper
 - Soap
-



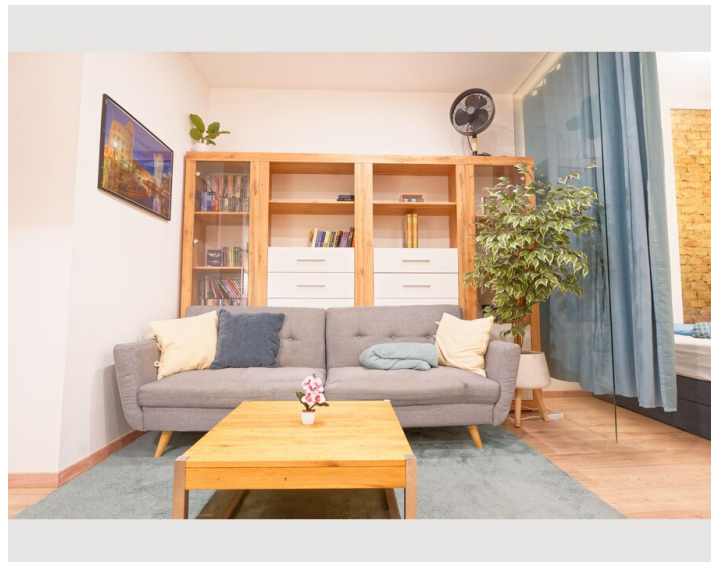
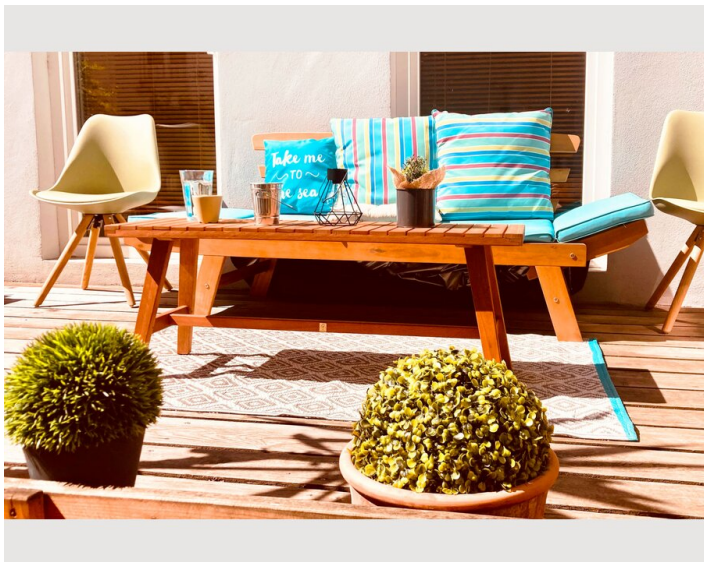
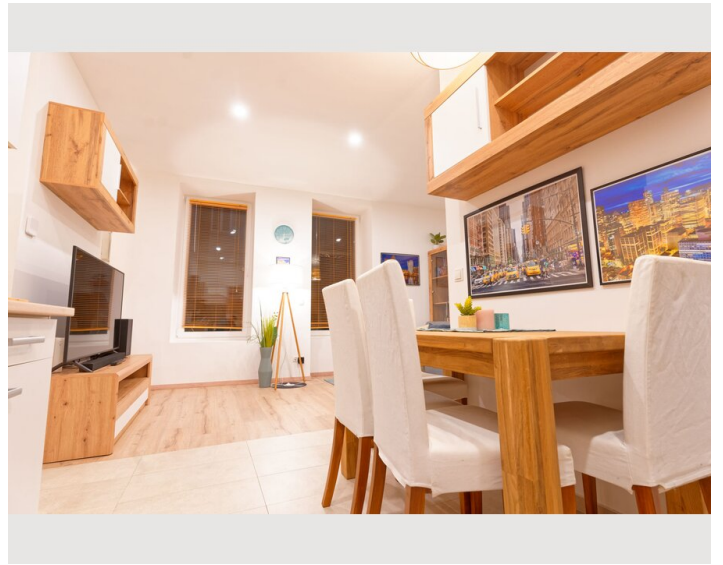
Kitchen

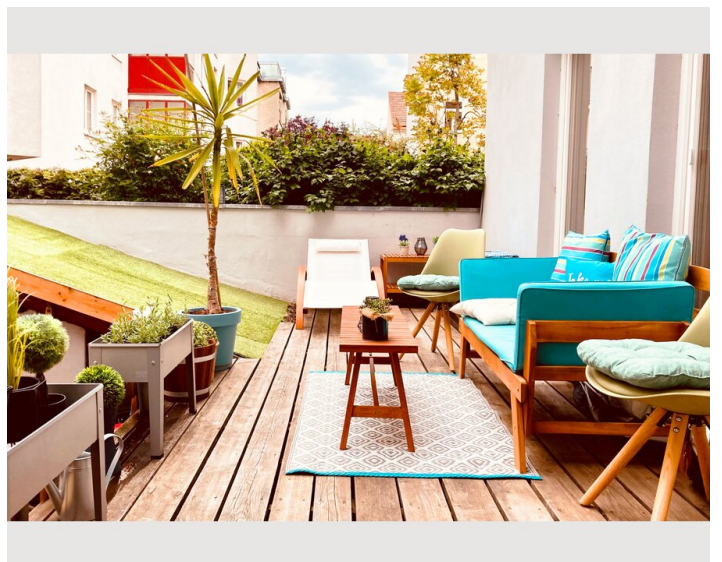
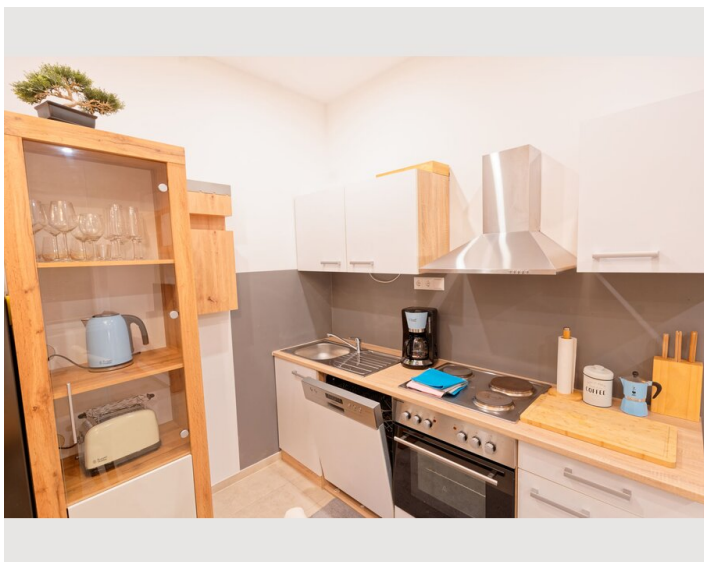
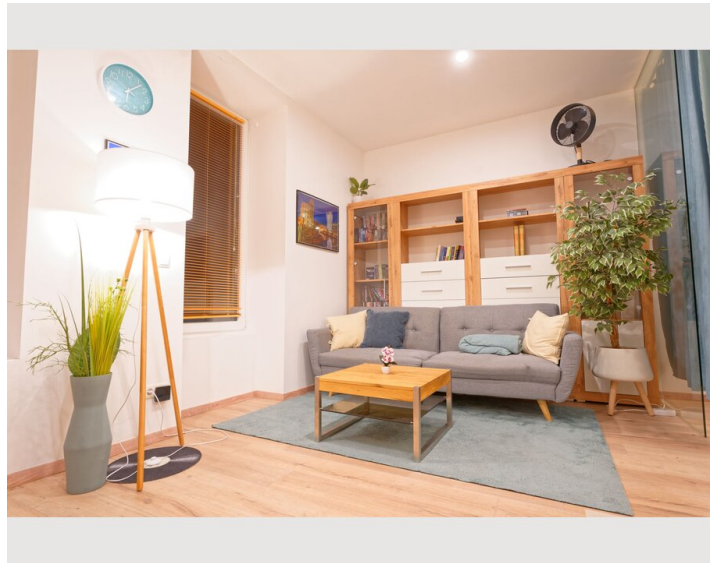
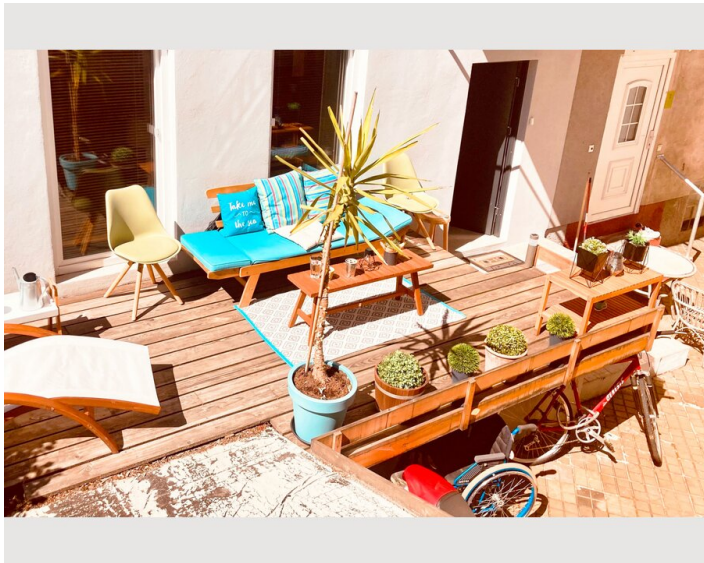
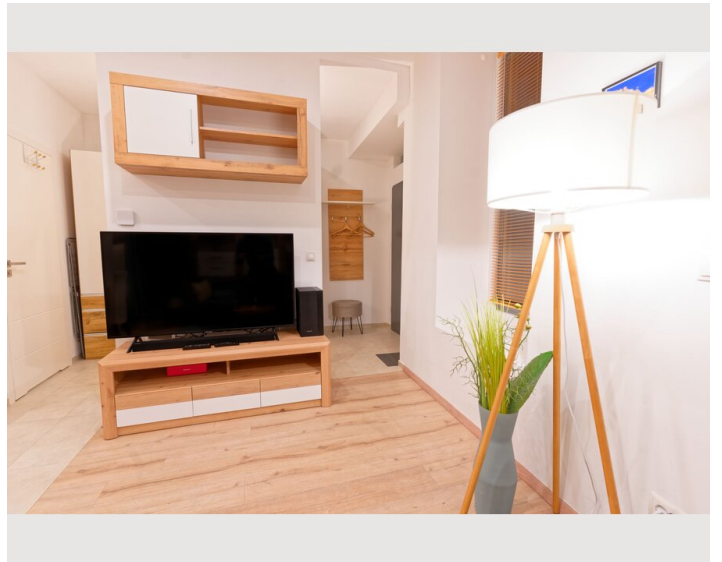
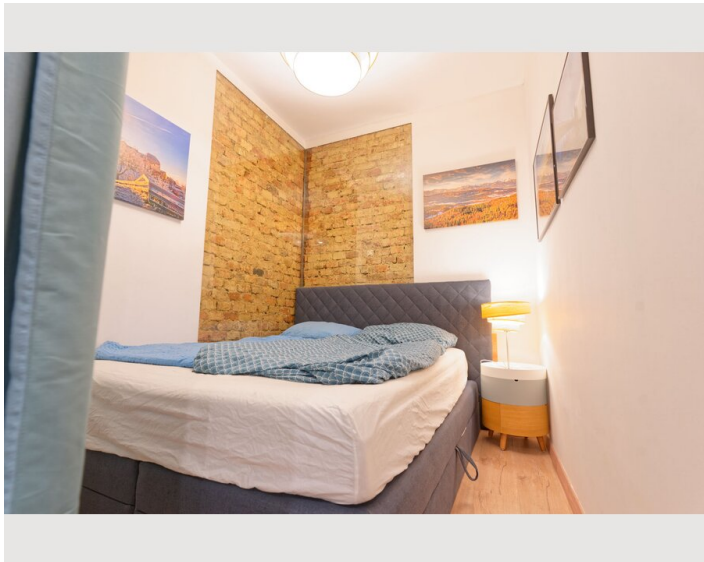
- Private kitchen
- Glasses/Tableware
- Filter coffee
- Microwave
- Cooking utensils
- Espresso machine
- Dishwasher

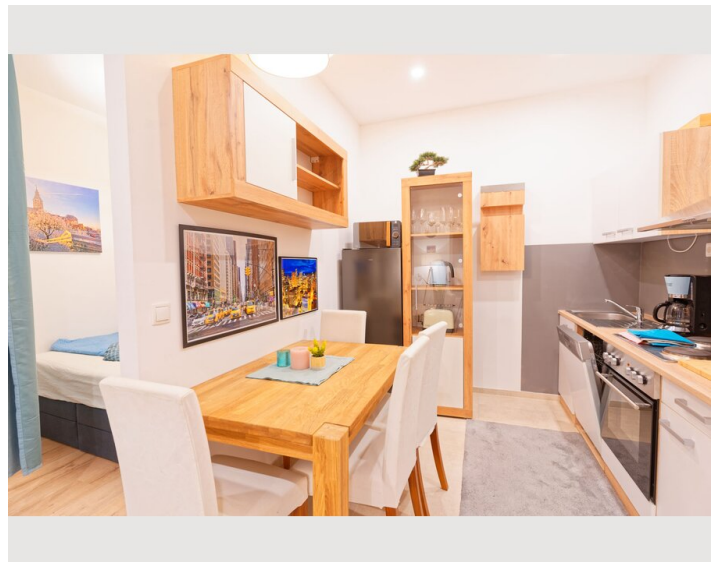
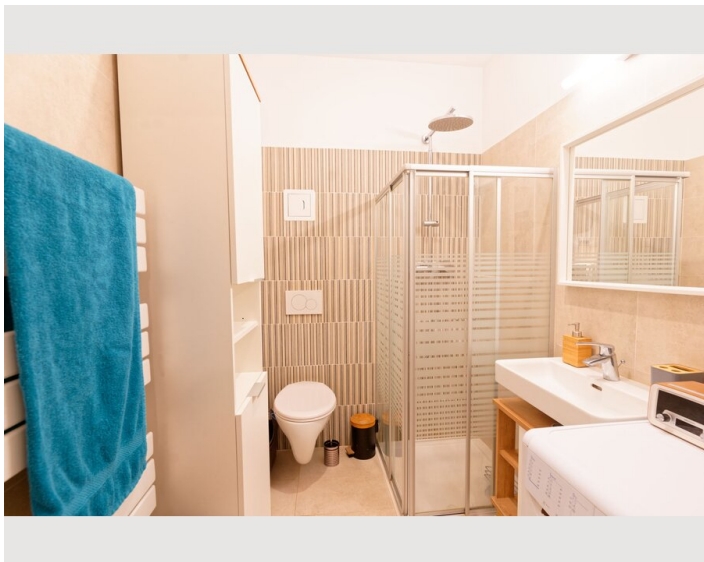
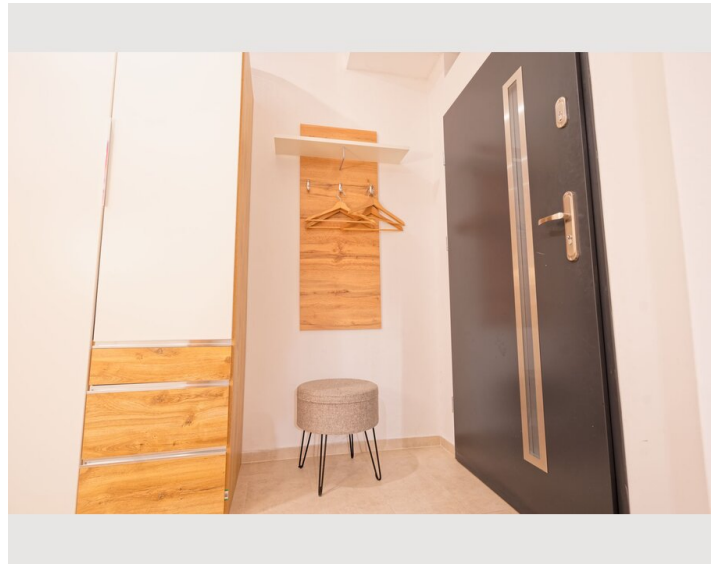
Informations

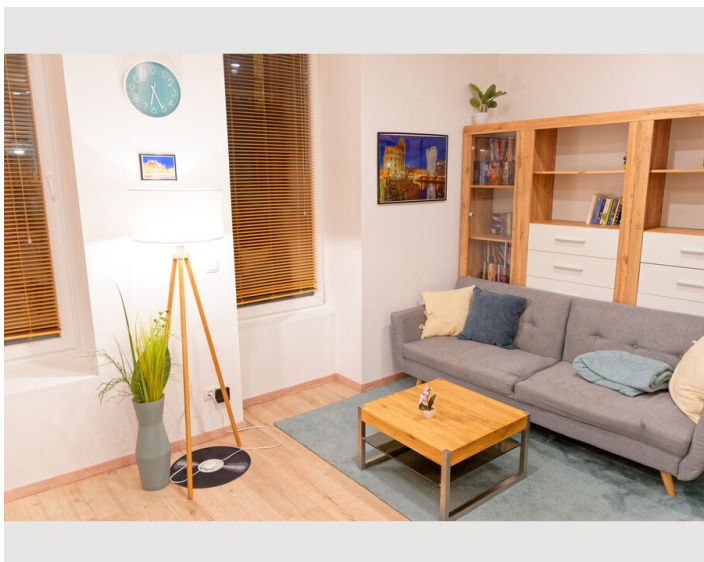
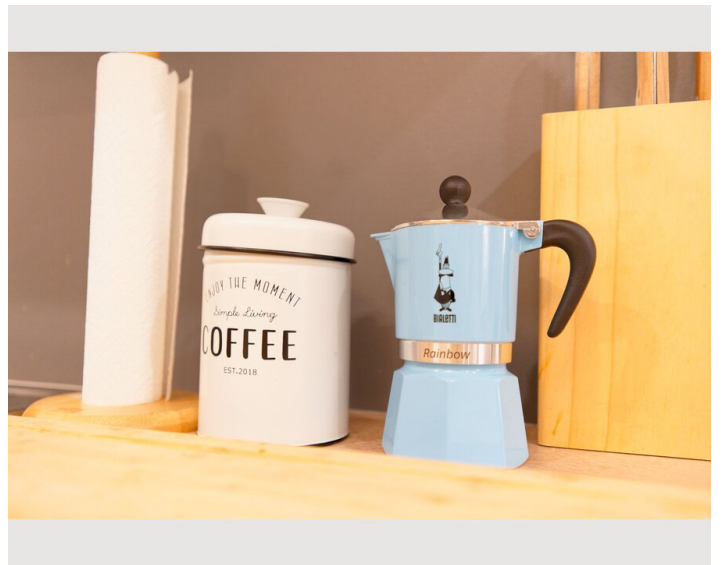
- Suitable for construction workers
- Smoking not allowed
- Private entrance
- Suitable for children
- Short-term parking zone subject to a charge
- Pets forbidden

Picture gallery
















Infrastructure

-  Westbahnhof - 8 minutes walk
-  3 km - Accessible with U3 via Westbahnhof
-  22 km - Accessible via airport bus station Westbahnhof
-  Spar supermarket (3 minutes - 260m), Billa supermarket (5 minutes - 450m)
-  52/60/12A Geibelgasse Äußere Mariahilfer Straße (2 minutes walk)
-  U6 Gumpendorfer Straße (6 min.) or U3/U6 Westbahnhof (8 min.)
-  Schwendermarkt (8 min.)

In the immediate vicinity you will find cafés, supermarkets, pharmacies, bakeries, the Schwendermarkt and you have excellent connections with the U3, U6, trams 52, 60 and the 12A bus.

Location

