



2 ZIMMER WOHNUNG, 6911 LOCHAU

Lake Constance view 62m² apartment

Object number: OCTK1

[View and rent online](#)

The 62m² 2-room apartment is located close to the Lake Constance and the Lochau train station, on the 3rd floor, without a lift with a view of the lake from all windows! The apartment is bright and south-facing.

Period	06/12/2025 - 06/01/2026
Number of persons	2
Total incl. VAT.	€ 1.917,46
Security deposit	€ 1.400,00



Living space

62m²



Maximum occupancy

2 Persons



Complete accommodation [?]

1 Private bathroom 1 Separated bedroom 1 Living-Sleepingroom



3. floor



Check-in

11:00 - 20:00 Clock



Check-out

07:00 - 20:00 Clock

Sleeping options

Sleeping room



1x Double bed (1,60 m x 2 m)

Living and sleeping



1x Extra bed

Descripton of accommodation

The apartment is very bright and sunny!

Equipment & Features



Basic equipment

- Internet/Wifi
- Bedclothes
- Private toilet
- Vacuum cleaner
- Hairdryer
- Private washing machine
- Towels
- Private parking space
- Cleaning utensils



First supply

- Toilet paper
- Soap



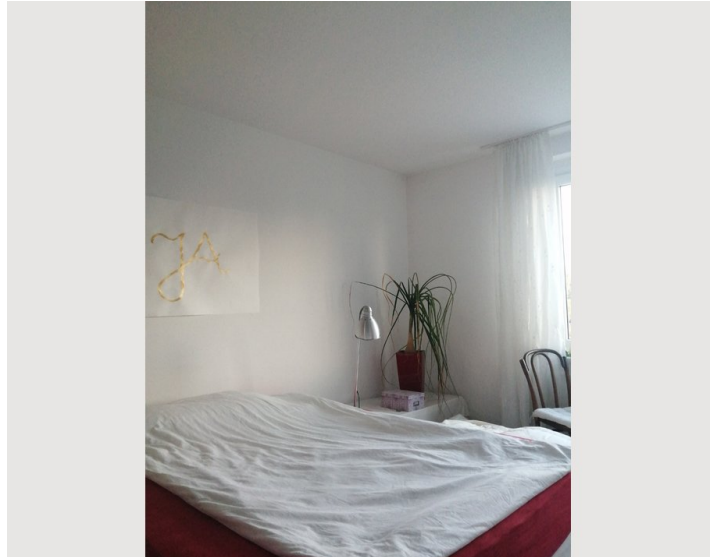
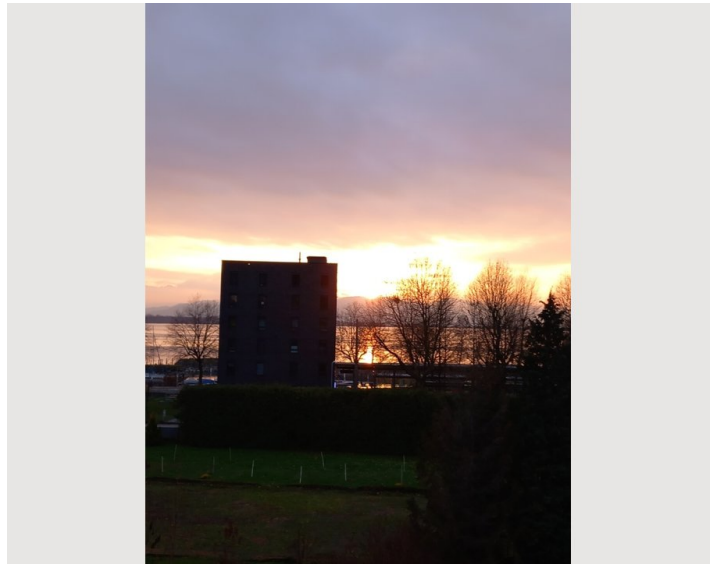
Kitchen

- Private kitchen
- Glasses/Tableware
- Dishwasher
- Cooking utensils
- Filter coffee

Informations

- Not suitable for children
- Desk/Workplace
- Pets forbidden
- Bicycle room free of charge
- Smoking not allowed
- Private entrance
- Regular cleaning at extra cost

Picture gallery



Infrastructure

 opposite the street

 10 minutes walk

 opposite the street

From the bright, south-facing 62 m² apartment, you can cycle to downtown Bregenz in 14 minutes and to the island of Lindau in 20 minutes. Directly from home you can walk to the Pfänder in 2 hours.

You only have to cross the street and you are already at the train station, at the bus stop and at the WONDERFUL Lake Constance with walking paths, cycle paths and a fitness course right on Lake Constance. You can walk to the pharmacy in 3 minutes and to the supermarket in 10 minutes

Location

