

2 ROOM APARTMENT, 5061 ELSBETHEN/SALZBURG

Gallery Apartment in the countryside but still close to the Center of Salzburg

Object number: AYPB1

[View and rent online](#)

Period	20/12/2025 - 20/01/2026
Number of persons	2
Total incl. VAT.	€ 2.505,94
Security deposit	€ 1.900,00

Bright maisonette in Salzburg/Elsbethen near Glasenbachklamm. Open living area with sofa bed, kitchen, dining space, bathroom, and WC. Gallery: bedroom, wardrobe, and platform. 5 minutes to Red Bull Base, close to motorway and FH



Living space

74m²



Maximum occupancy

4 Persons



Complete accommodation [?]

1 Private bathroom 1 Separated bedroom 1 Living-Sleepingroom



3. floor



Check-in

14:00 - 20:00 Clock



Check-out

08:00 - 12:00 Clock

Sleeping options

Sleeping room



1x Double bed (1,60 m x 2 m)

Living and sleeping



1x Sofa bed (2 persons)

Descripton of accommodation

Very bright, open maisonette in Elsbethen, a recreational area near Salzburg—perfect for nature lovers with its proximity to Glaserbachklamm.

The gallery apartment is divided into two levels:

Lower level: modern, spacious open-plan living area with sofa bed, entrance hall, bathroom, WC, dining area, kitchen with island and breakfast bar.

Gallery: bedroom, wardrobe, and relaxation area

Equipment & Features



Basic equipment

- TV
- Towels
- Private parking space
- Iron & ironing board
- Hairdryer
- Bedclothes
- Private toilet
- Vacuum cleaner
- Cleaning utensils



First supply

- Toilet paper
- Fridge filling on request
- Nespresso capsules



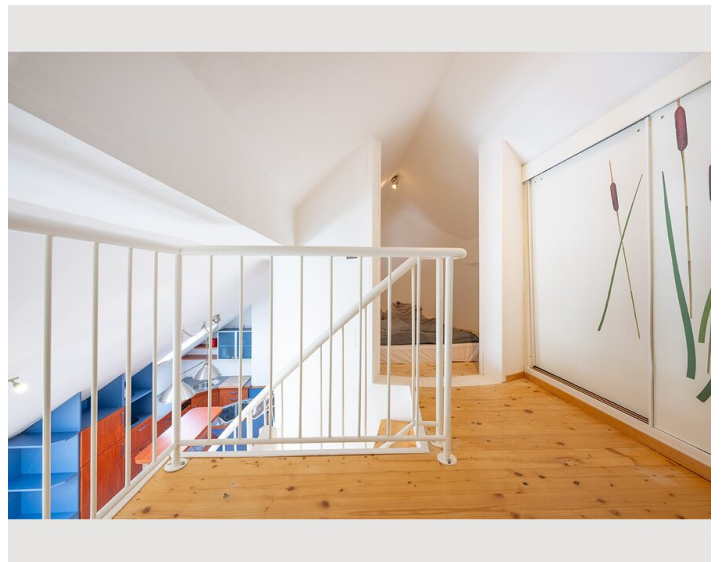
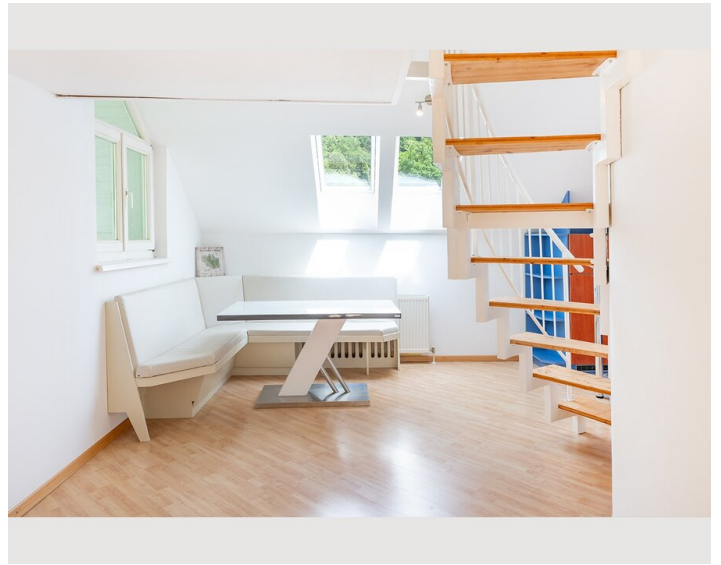
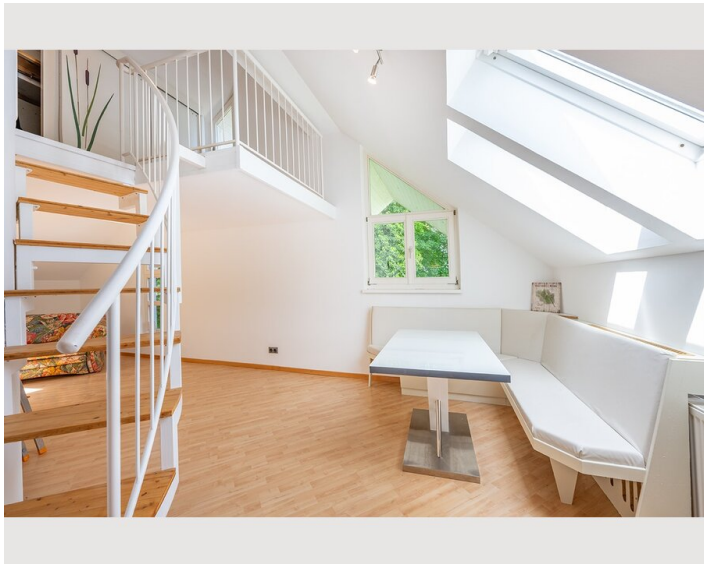
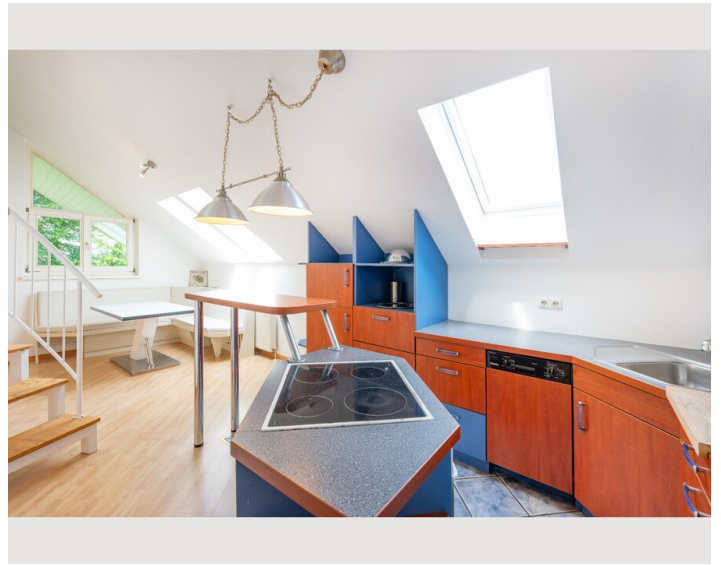
Kitchen

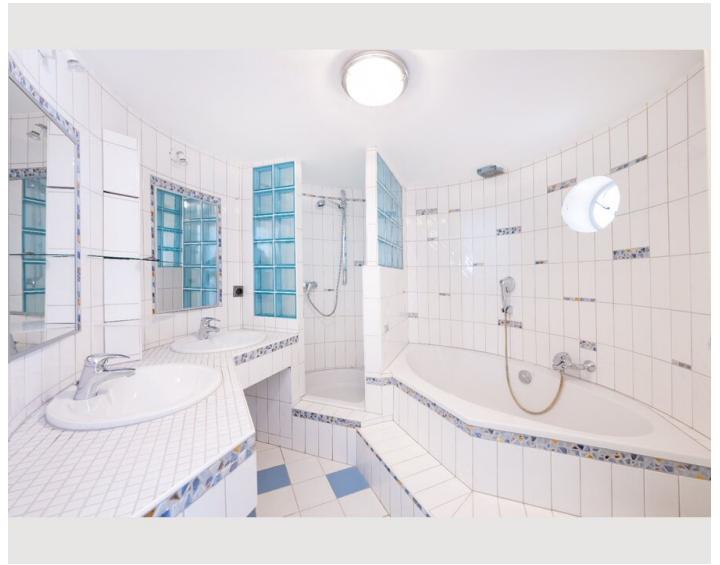
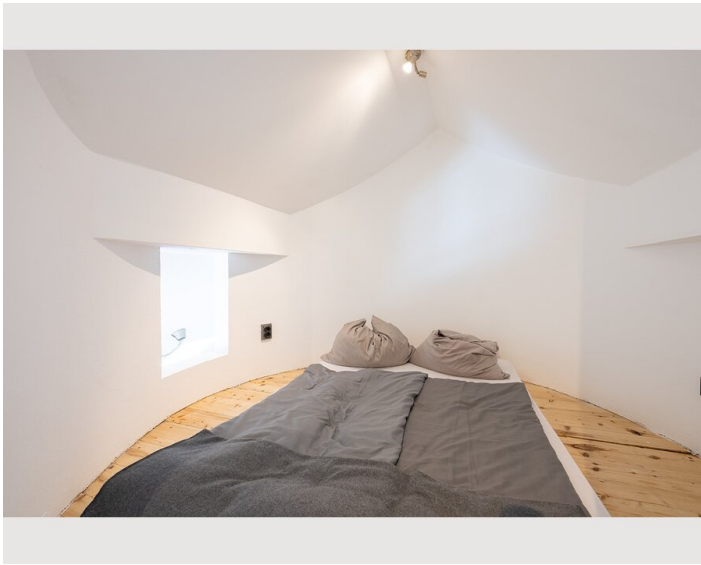
- Private kitchen
- Glasses/Tableware
- Dishwasher
- Cooking utensils
- Espresso machine
- Microwave

Informations


- Private entrance
- Pets allowed
- Bicycle room free of charge
- Pets on request
- Regular cleaning at extra cost

Picture gallery





Infrastructure

 5 Minutes to walk



Elsbethen is located in the southern part of Salzburg and is a highly sought-after residential area. It combines city proximity with a sense of freedom and a pleasant summer climate. A hidden gem is the natural swimming spots right at your doorstep.

Stunning hiking trails in and around Glaserbachklamm, along with plenty of green spaces for walking, cycling, and various outdoor activities.

The historic Salzburg Old Town is just a 15-minute drive away, and public transport options like buses and the Salzburg Süd train station are within a few minutes' walk. Elsbethen offers excellent motorway access and is close to the university of applied sciences. The Red Bull Base is just a 5-minute walk away.

Location

