

HOUSE, 2601 SOLLENAU

## Appartement Ferienhaus Sonnenhain

Object number: MQGZ1

[View and rent online](#)

Located in southern Lower Austria - between Baden and Wiener Neustadt - is the newly adapted and comfortably furnished holiday home with its all-inclusive equipment. Move in and feel good!.

<b>Period</b>	20/12/2025 - 20/01/2026
<b>Number of persons</b>	2
<b>Total</b> incl. VAT.	€ 2.501,20
Security deposit	€ 1.900,00

**Living space**

50m<sup>2</sup>

**Maximum occupancy**

3 Persons

**Complete accommodation** 

1 Private bathroom 1 Separated bedroom 1 Living-Sleepingroom

**Ground floor****Check-in**

14:00 - 22:00 Clock

**Check-out**

08:00 - 10:00 Clock

**Sleeping options****Sleeping room**

1x Double bed (1,80 m x 2 m)

**Living and sleeping**


1x Sofa bed (1 person)

Descripton of accommodation


The apartment is located in a quiet urbanization, offers a private entrance, community garden, as well as the following premises:  
Enterroom | Kitchen with dining area | Living room with sofa bed and office-place | Bedroom with double bed | Bathroom with bathtub

All-inclusive equipment:  
Heating | Electric stove with ceramic hob & oven | Dishwasher | Microwave | Kettle | Coffee machine | Freezer and fridge combination | Satellite TV | Flat-screen TV | Towel service | Bed linen | Wi-Fi | Full equipment (glasses, crockery, cutlery, cooking utensils, decoration)


Equipment & Features

 **Basic equipment**

- Garden
- Internet/Wifi
- Bedclothes
- Private toilet
- Garden sharing
- TV
- Towels
- Hairdryer

 **First supply**

- Toilet paper
- Soap
- shampoo

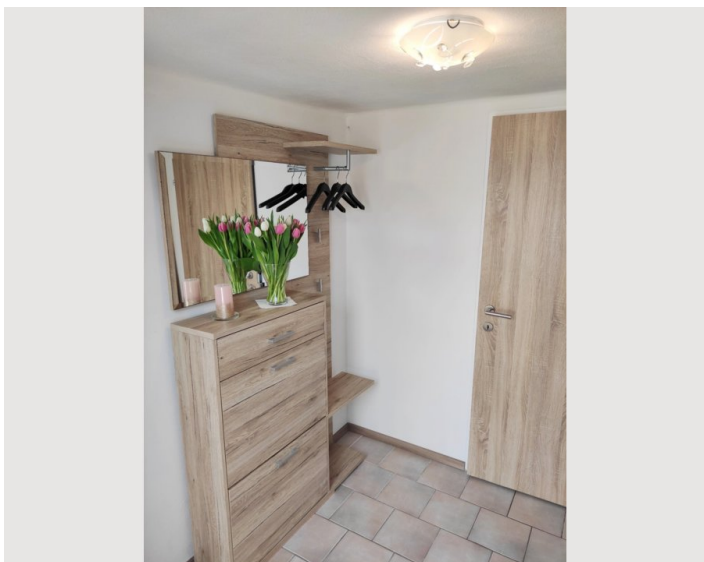
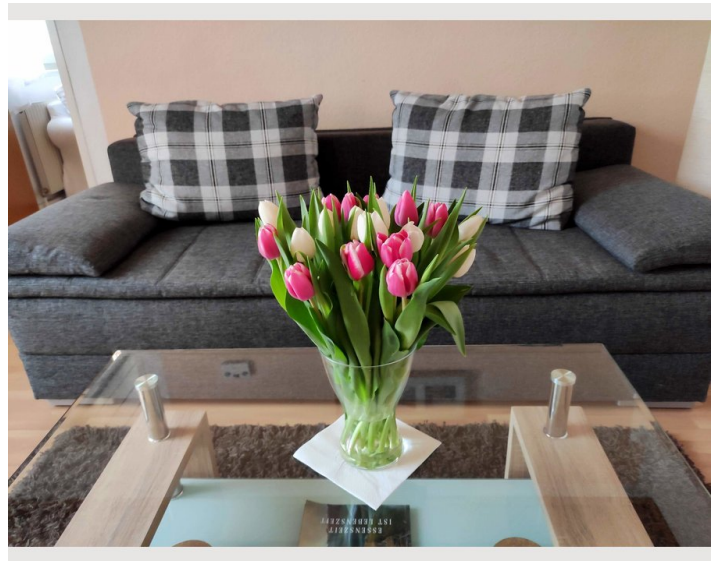
 **Kitchen**

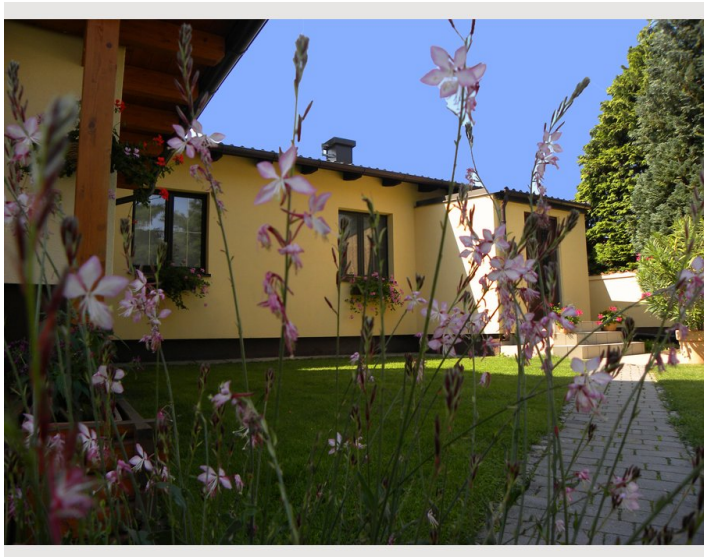
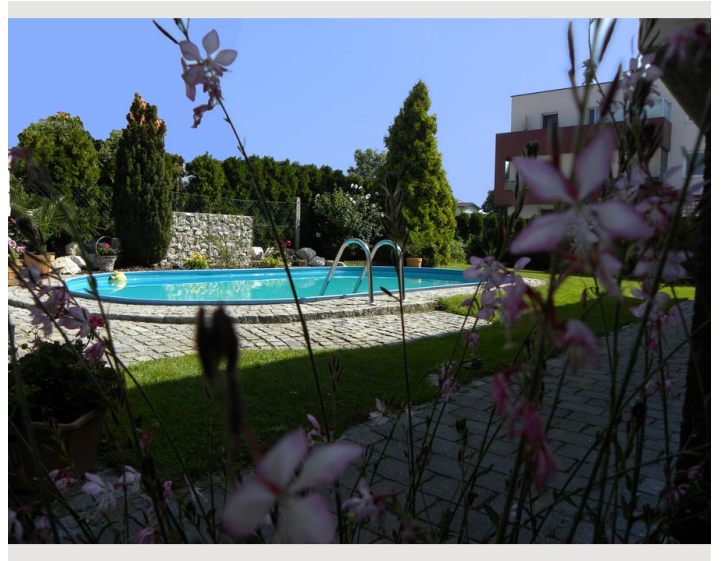
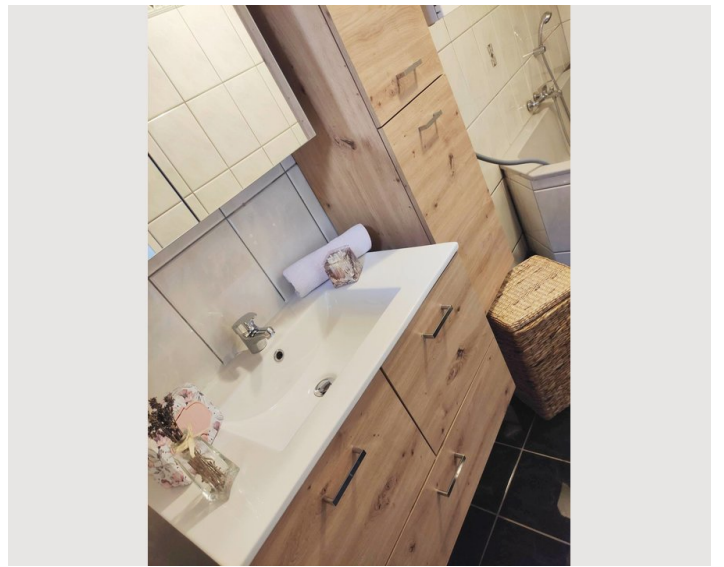
- Private kitchen
- Glasses/Tableware
- Dishwasher
- Cooking utensils
- Espresso machine
- Microwave

Informations

- Suitable for construction workers
- Desk/Workplace
- Pets forbidden
- Smoking not allowed
- Private entrance
- Regular cleaning at extra cost

Picture gallery





## Infrastructure



Sollenau is conveniently located on the B17, nearest city Wiener Neustadt in about 10 minutes by car, Vienna via A2 in about 25 minutes. Felixdorf main station in the immediate vicinity, very good intermittent train connections to Vienna or Wiener Neustadt.

In town you will find various shops (Billa, Penny, Lidl, Bipa, bakery, butcher, etc.) as well as cafes and restaurants, a pharmacy, gas stations and a small hardware store.

A cycle path (Eurovelo 9) passes right by the property, with which you can immediately enter a great network of cycle paths.

## Location

