



2 ROOM APARTMENT, 1200 VIENNA

## Unique boutique apartment next to Danube river

Object number: BODV29

[View and rent online](#)

<b>Period</b>	10/12/2025 - 10/01/2026
<b>Number of persons</b>	2
<b>Total</b> incl. VAT.	€ 1.378,26
Security deposit	€ 1.000,00

Spacious apartment in the Leopoldstadt. You will feel at home in this apartment. By booking these apartments, you will be most satisfied with your stay. Pay attention. The apartment is located near the railway.



### Living space

35m<sup>2</sup>



### Maximum occupancy

2 Persons



### Complete accommodation <sup>?</sup>

1 Private bathroom 1 Separated bedroom



### 1. floor



### Check-in

15:00 - 00:00 Clock



### Check-out

00:00 - 10:00 Clock

## Sleeping options

### Sleeping room



1x Double bed (1,80 m x 2 m)

## Description of accommodation

It is a 1-bedroom apartment primarily set up for short-term stays. It basically has everything you need for an enjoyable stay. The apartment is located on the first floor. It has a comfortable bathroom and can accommodate up to 2 people.. The fully equipped kitchen there is everything necessary for heating or cooking. You will feel at home in this apartment. Comfortable bed with hypoallergenic pillows, orthopaedic mattress, and hotel-quality bed linen. Professional cleaning before your arrival. .

### Equipment & Features



#### Basic equipment

- Internet/Wifi
- Bedclothes
- Private toilet
- Cleaning utensils
- TV
- Towels
- Iron & ironing board
- Hairdryer



#### First supply

- Toilet paper
- Soap
- shampoo
- Nespresso capsules



#### Kitchen

- Private kitchen
- Dishwasher
- Espresso machine
- Microwave

### Informations

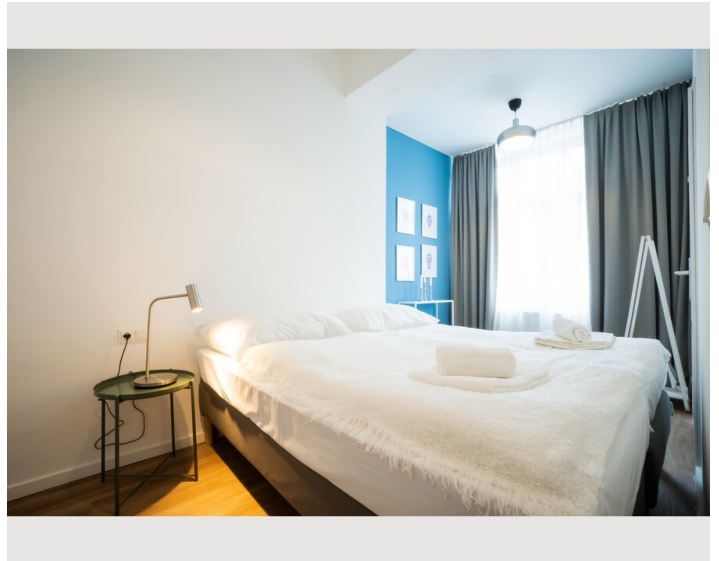
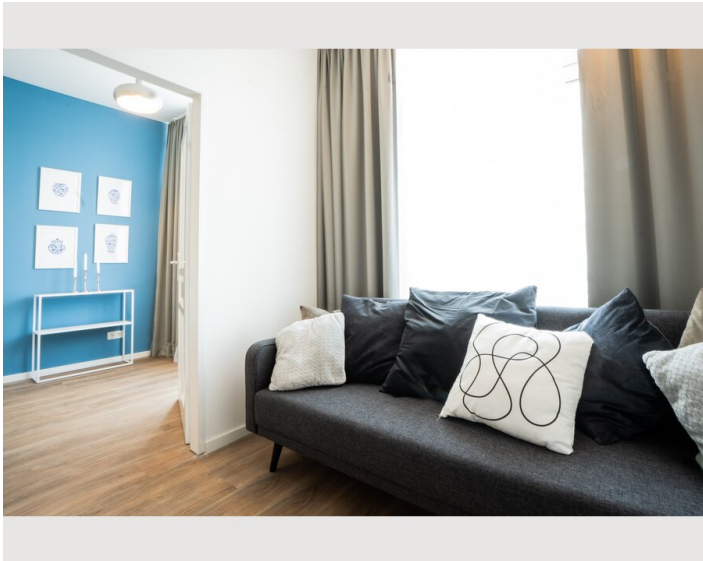
- Suitable for construction workers
- Smoking not allowed
- Private entrance
- Regular cleaning at extra cost
- Suitable for children
- Desk/Workplace
- Pets on request

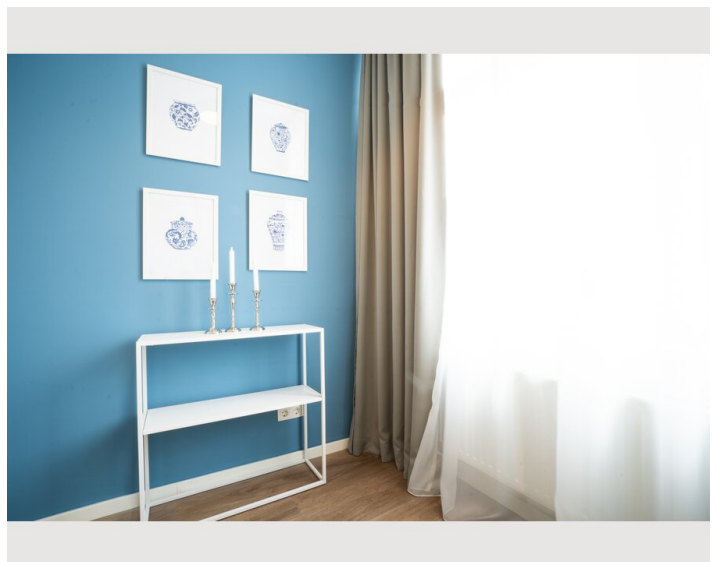
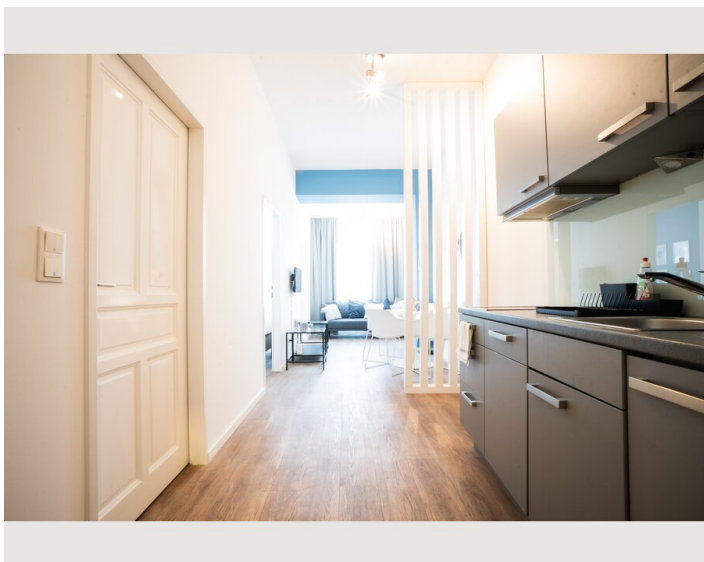
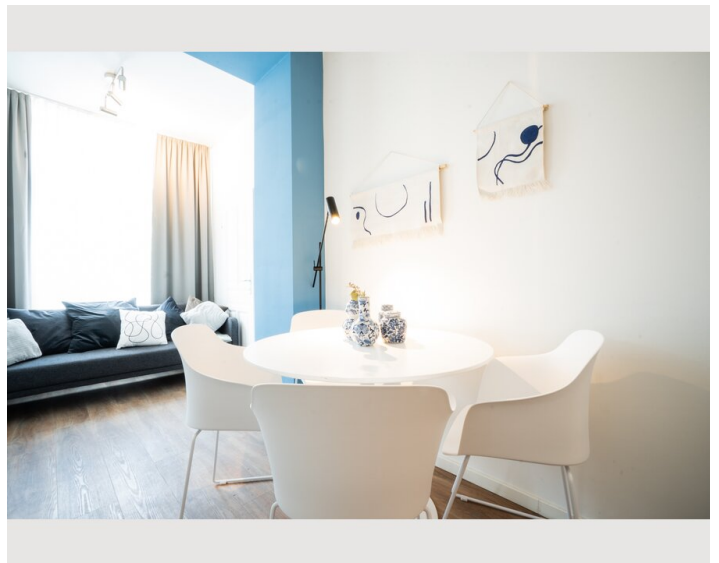
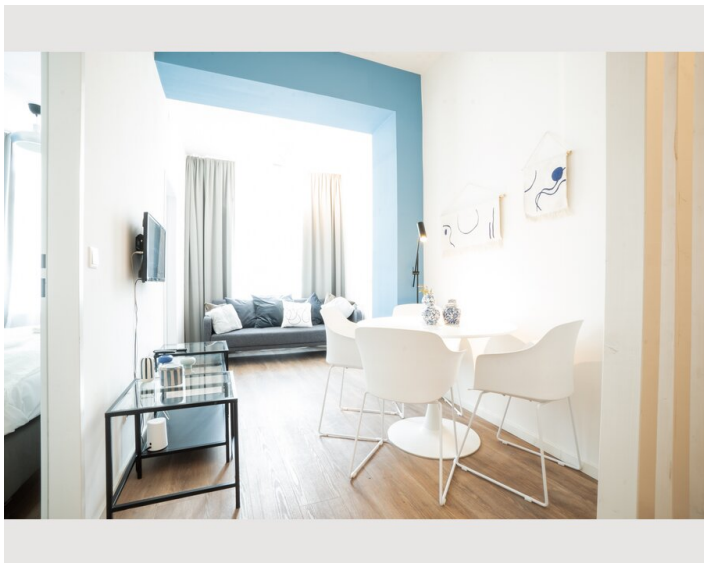
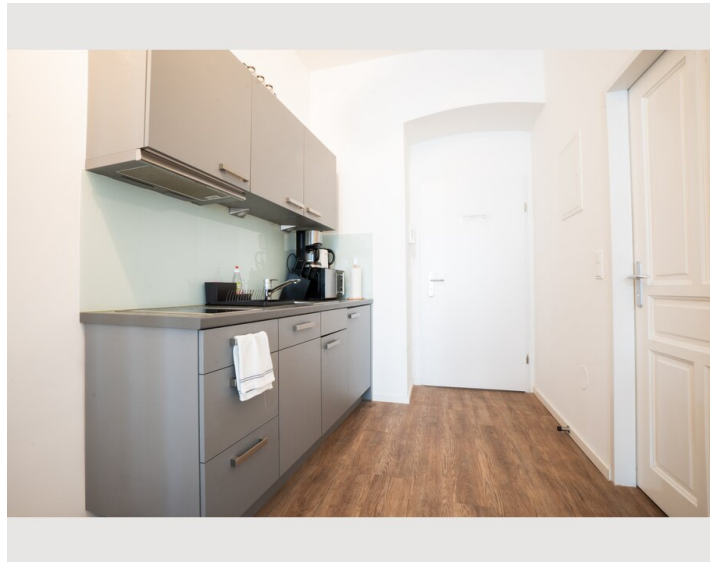
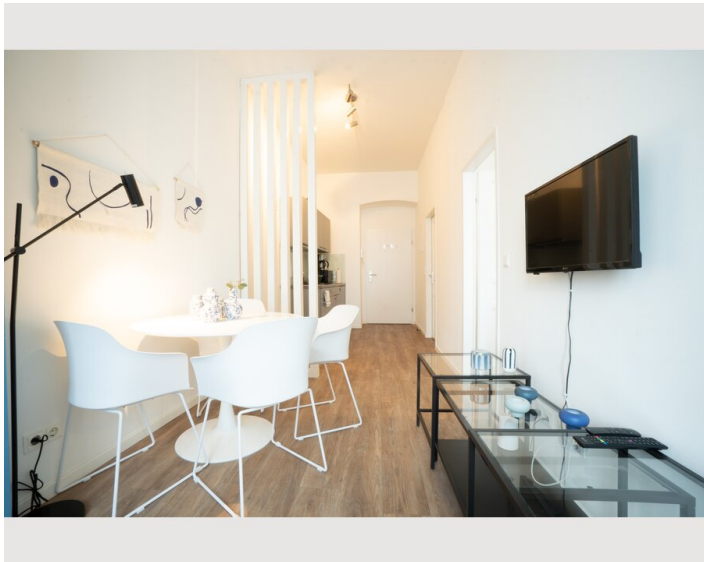
### Additional services

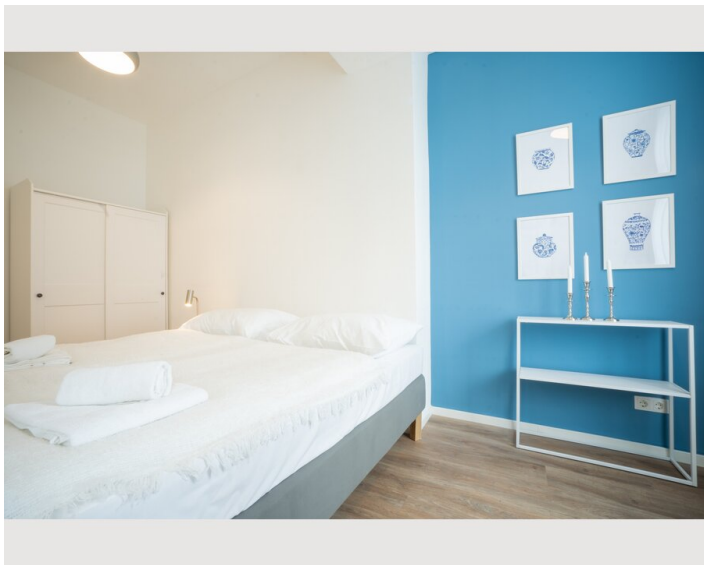
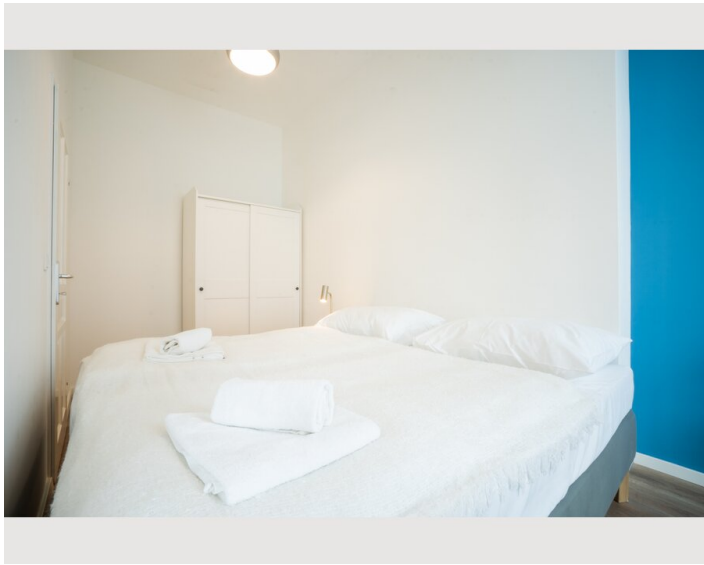
- Extra cleaning (€ 54,00)

All prices are gross per month - billing is done directly with the lessor.

### Picture gallery







## Infrastructure



Bus number 27



Subway, Wien Traisengasse Bahnhof (R2. R3. R7)

You will live in a good area, but you will also have easy access to the most important tourist spots:

- ⇒ 10 min. to Augarten
- ⇒ 21 min. to Sigmund Freud Museum
- ⇒ 22 min. to Hofburg
- ⇒ 25 min. to Wiener Rathaus

Cafes, restaurants, and supermarkets are located near the house. You can have lunch in a new place or order home delivery.

Restaurants with the possibilities of ordering food at home

5 minutes walk:

- ⇒ Dresdnerhof
- ⇒ Ciccio
- ⇒ Gastwirtschaft Zum Nussgart'l
- ⇒ BILLA
- ⇒ McDonald's Wien

A variety of transport will take you to any point on the map:

A 3-minute walk:

Trams:

- ⇒ 2 | 5

The buses:

- ⇒ N29

5 minutes walk:

Subway

- ⇒ Wien Traisengasse Bahnhof (R2. R3. R7)

Currently, Leopoldstadt is one of the most modern and most dynamic districts of Vienna. Its cityscape changes constantly, such that it has become a colorful mix of historic (theaters, cathedrals) and modern buildings (high-rise buildings, shops, residential buildings).

The 2nd district is also known for its numerous tourist attractions which guarantee a stable all-year tourist flow: the Wiener Prater, which is a green area being under environmental protection, with its famous amusement park, the 300 y.o Viennese porcelain manufacture.

## Location

