



2 ROOM APARTMENT, 6020 INNSBRUCK

Bright, charming apartment

Object number: JSLZ1

[View and rent online](#)

Period	21/12/2025 - 21/01/2026
Number of persons	2
Total incl. VAT.	€ 2.512,90
Security deposit	€ 1.800,00

Lovingly renovated for personal use, this elegant apartment impresses with a thoughtful layout, spacious rooms, and high-quality features — now unexpectedly available for rent in a quiet, green, and central location.



Living space

50m²



Maximum occupancy

4 Persons



Complete accommodation [?]

1 Private bathroom 1 Separated bedroom



2. floor

Elevator available



Check-in

18:00 - 20:00 Clock



Check-out

10:00 - 12:00 Clock

Sleeping options

Sleeping room



1x Double bed (1,80 m x 2 m)



1x Sofa bed (2 persons)

Description of accommodation

This apartment combines high-quality features, a green yet central location, and a spacious living atmosphere — ideal for those seeking stylish and comfortable living in a prime area.

Location & Surroundings:

Centrally located yet wonderfully quiet, the apartment is nestled in a green environment with two sunny west-facing balconies — one of which is glazed with a large sliding window, perfect for use as additional storage space.

The university hospital is just a 10-minute walk away, and the city center is reachable in 15–20 minutes — both routes run along the picturesque Inn promenade. Everything is also easily accessible by bike within 5–10 minutes. For those who prefer convenience, the bus connection is excellent — 4 stops to the hospital, 5 to the city center (approx. 7–10 minutes travel time).

Features & Highlights:

Modern, high-quality bathroom with walk-in rain shower, electric underfloor heating, large mirror, and ample storage space

Fully equipped fitted kitchen with all appliances

New box spring bed in the spacious bedroom with a high-quality sliding/hinged door wardrobe

Fine furniture: solid wood tables, comfortable dining chairs, and a large, cozy sofa

Small entrance area with elegant coat rack

Two balconies, one glazed and versatile in use

Underground parking space available upon request, free parking spaces available in front of the building

City-Bike upon request.

Equipment & Features



Basic equipment

- Balcony
 - Internet/Wifi
 - Community washing machine
 - Towels
 - Garage
 - Iron & ironing board
 - Hairdryer
 - Loggia
 - Private washing machine
 - Bedclothes
 - Private toilet
 - Vacuum cleaner
 - Cleaning utensils
-



First supply

- Toilet paper
 - Soap
 - shampoo
-



Kitchen

- Private kitchen
- Glasses/Tableware
- Microwave
- Cooking utensils
- Dishwasher

Informations

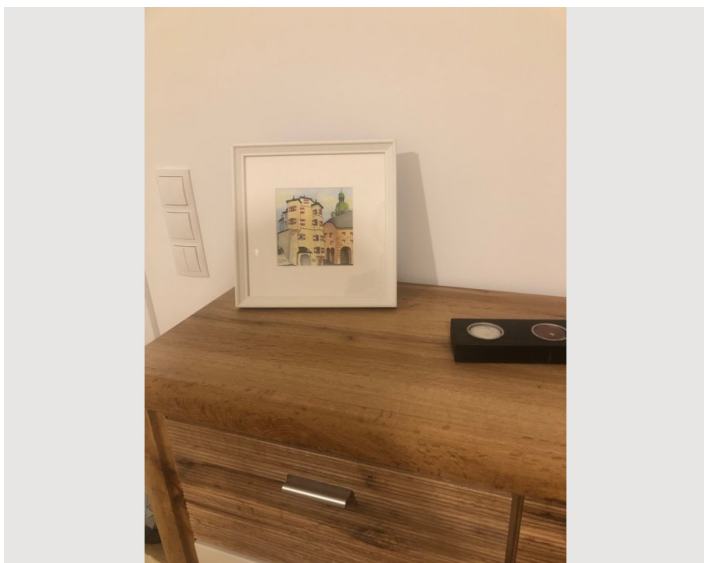
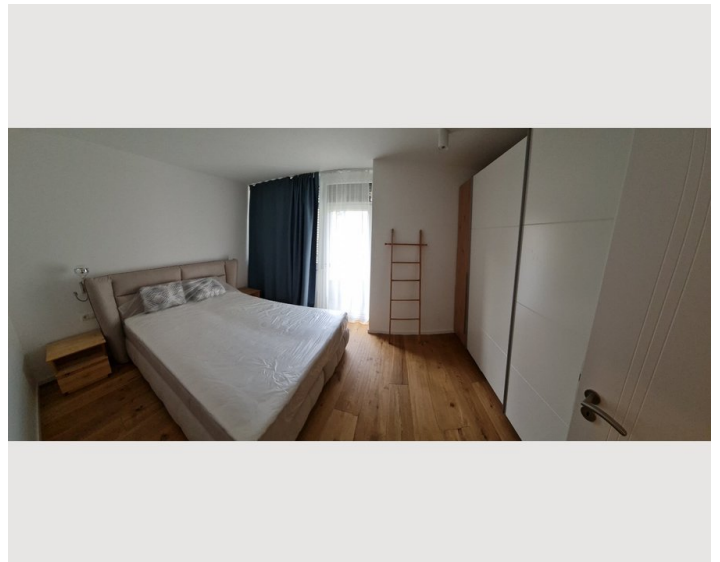
- Suitable for children
- Free short-term parking zone
- Private entrance
- Regular cleaning at extra cost
- Smoking not allowed
- Desk/Workplace
- Pets forbidden
- Bicycle room free of charge

Additional services






- Everything you need for a new start is available in the kitchen - tea, coffee, spices, oil, vinegar, etc. and most of it in organic quality

All prices are gross per month - billing is done directly with the lessor.

Picture gallery



Infrastructure

-  approx. 15–20 min on foot, 10 min by bike, 7–10 min by bus, 5 min by car
-  approx. 3–5 min on foot
-  approx. 30 min on foot, 20 min by bus, 10 min by car
-  approx. 3–5 min on foot
-  approx. 20 min on foot, 10 min by bus, 5 min by car

The apartment is not only quiet and green but also extremely convenient:

Supermarkets such as Hofer, Billa Plus, MPreis, as well as DM, a bank, and other daily necessities are all within about a 5-minute walk — perfect for quick errands.

The West shopping center, offering a wide variety of additional shops, is also just around a 10-minute walk away.

With the university hospital (approx. 10 minutes on foot) and the city center (approx. 15–20 minutes) reachable along the picturesque Inn promenade, residents enjoy the perfect balance of nature, urban life, and everyday convenience.

Cyclists also benefit from beautiful, safe paths — all destinations are reachable within minutes. For those who prefer public transport: nearby bus stops provide easy access with only 4 stops to the hospital and 5 to the city center (travel time approx. 7–10 minutes).

Location

