

2 ZIMMER WOHNUNG, 1190 VIENNA

Georgious view over Vienna

Object number: WBIR1

[View and rent online](#)

Period	15/07/ - 15/08/2025
Number of persons	2
Total incl. VAT.	€ 2.821,04
Security deposit	€ 2.100,00

Outskirts of Vienna, neat apartment building. Converted attic with a view over Vienna, very quiet residential area. Ample parking.



Living space

85m²



Maximum occupancy

2 Persons



Complete accommodation

1 private bathroom 1 Separated bedroom



3. floor



Check-in

14:00 - 20:00 Clock



Check-out

10:00 - 14:00 Clock

Sleeping options

Sleeping room



1x Double bed (1,40 m x 2 m)



1x Double bed (1,80 m x 2 m)

Descripton of accommodation

Small entrance/cloakroom area, separated from the living/dining area by a glass door. The living/dining room has a dark parquet floor. From the living room you can access the approx. 12m² balcony with a table and armchairs.

In the living area there is a sofa, glass table, a very large desk, a dining table with 6 chairs, a Chipendale sideboard, a Biedermeier crockery case.

A glass door leads to the front area of the kitchen, toilet, bathroom and bedroom. The kitchen is functional but already 30 years old. Gas stove, fridge/freezer combination, dishwasher.

WC with sink and ventilation.

Bathroom with bathtub, washing machine, large skylight.

Bedroom with double bed and walk-in closet.

Equipment & Features



Basic equipment

- Balcony
- Garden sharing
- Private washing machine
- Towels
- Vacuum cleaner
- Cleaning utensils
- Garden
- Music system/docking station
- Bedclothes
- Private toilet
- Iron & ironing board
- Hairdryer



First supply

- Toilet paper
- Soap
- shampoo
- Fridge filling on request



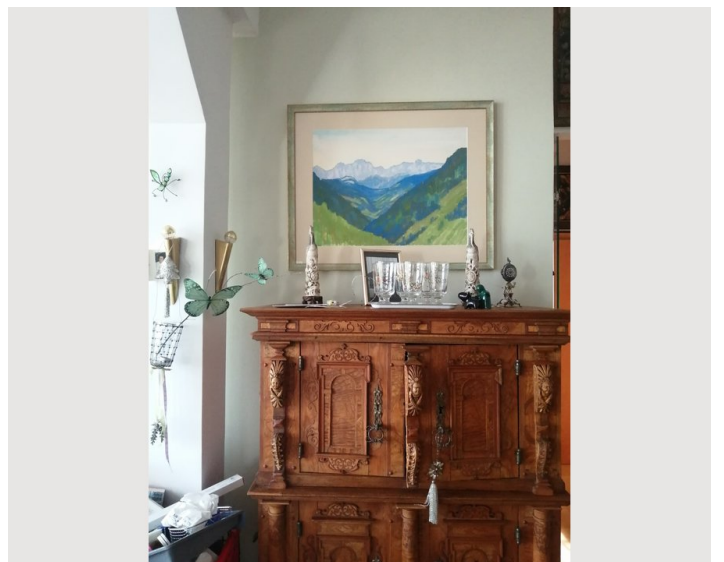
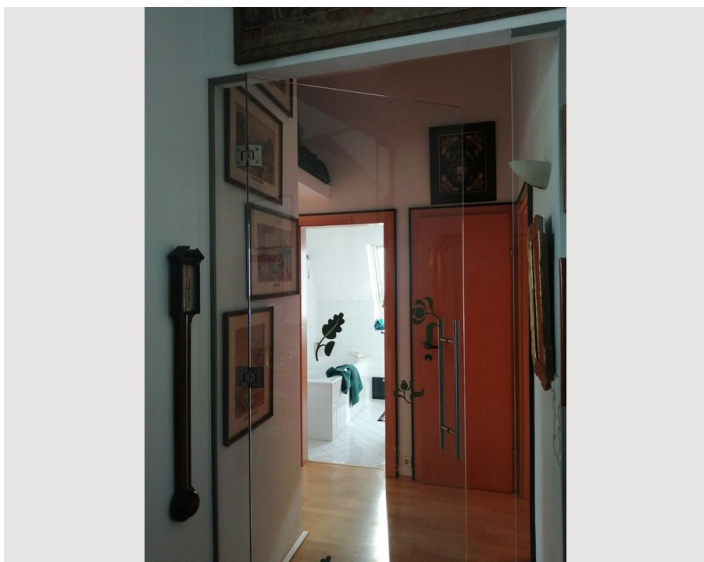
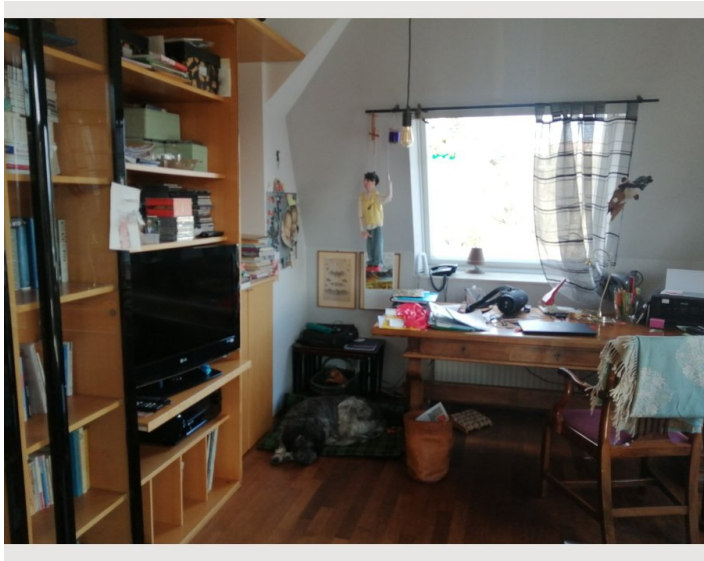
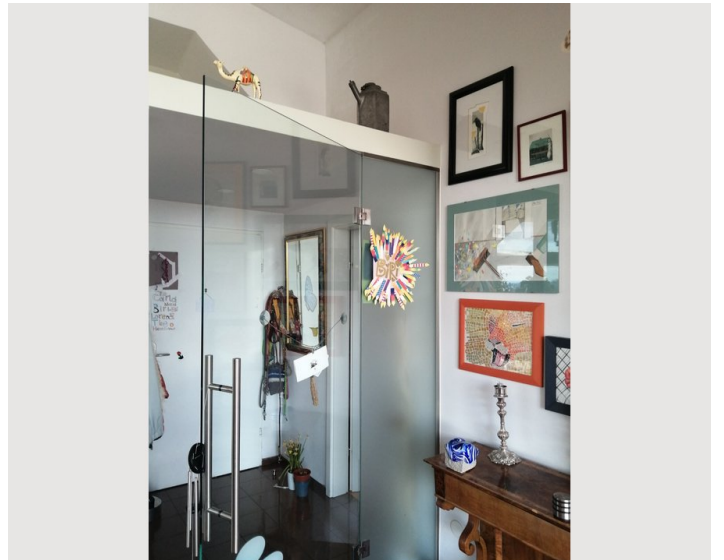
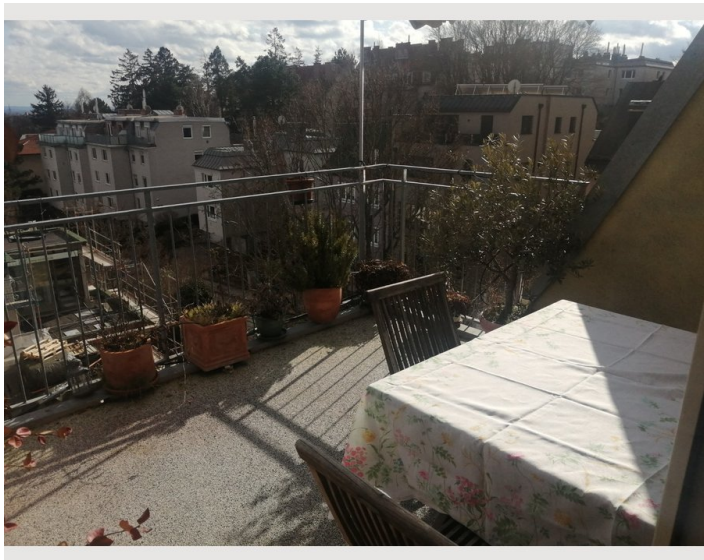
Kitchen

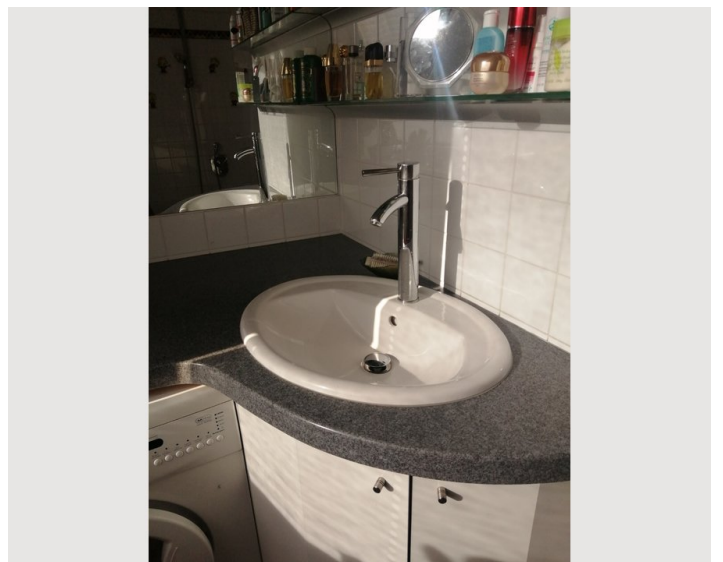
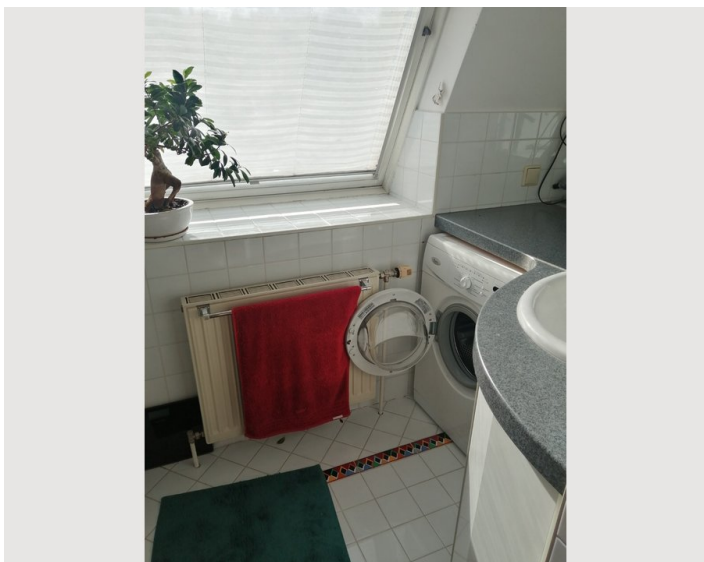
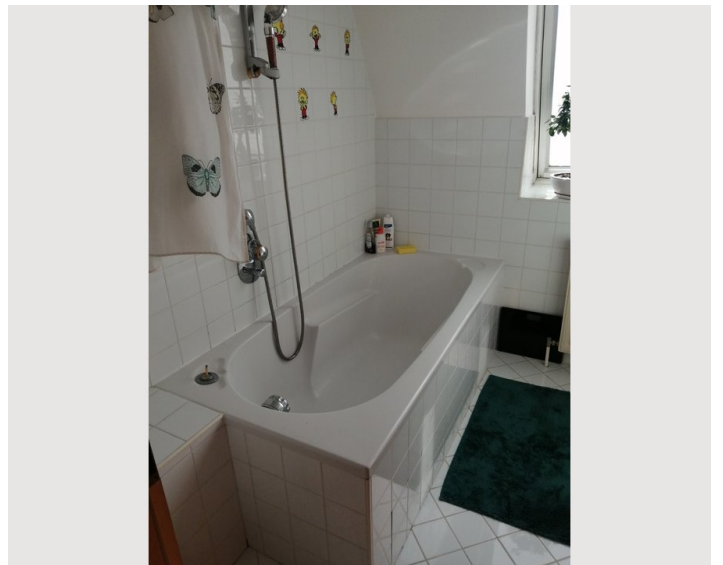
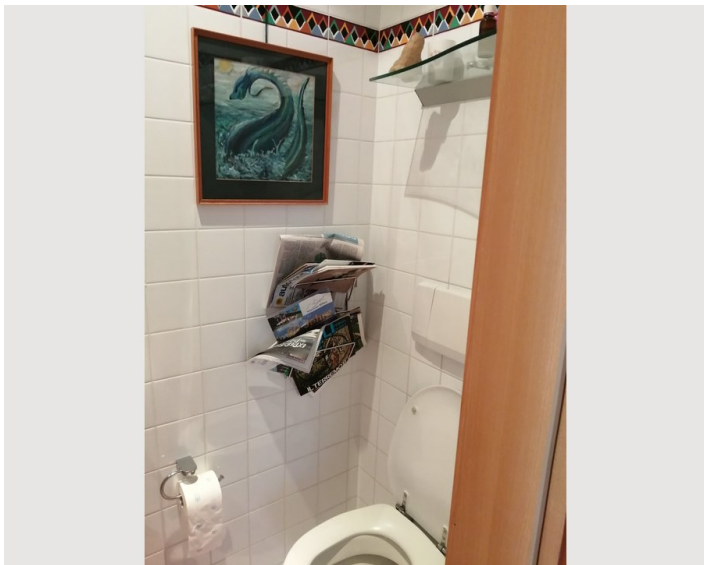
- Private kitchen
- Glasses/Tableware
- Cooking utensils
- Dishwasher

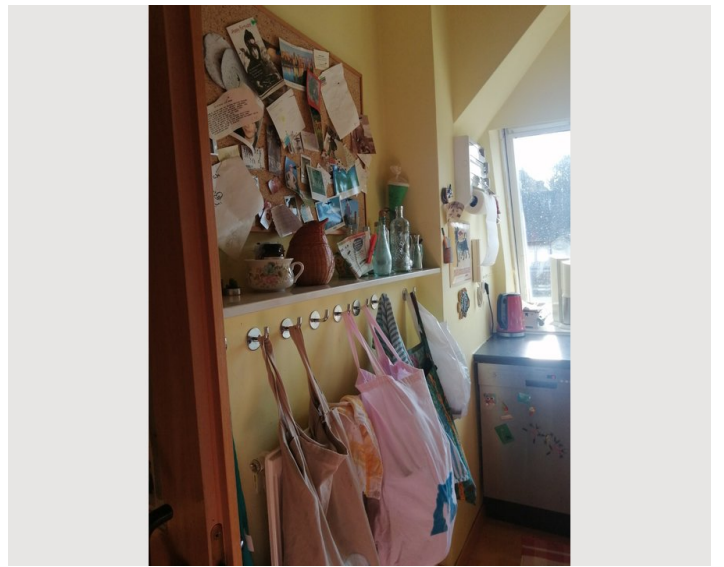
Informations

- Not suitable for children
- Short-term parking zone subject to a charge
- Private entrance
- Regular cleaning at extra cost
- Smoking not allowed
- Desk/Workplace
- Pets on request

Picture gallery







Infrastructure



The nearest bus stop is 2 minutes away, the S45 express train is 2km away, and therefore good transport connections. 2km away there are various shops, cafes, restaurants, banks

Location

