



2 ROOM APARTMENT, 5101 BERGHEIM

## Penthouse with nice view to the mountains

Object number: MGPR1

[View and rent online](#)

New recovered Penthouse. Very close to the city of Salzburg (2 km) and to the bus station. The house is buildet in old Salzburg Villenstyle.

<b>Period</b>	25/06/ - 25/07/2026
<b>Number of persons</b>	2
<b>Total incl. VAT.</b>	€ 2.035,53
Security deposit	€ 1.600,00

**Living space**40m<sup>2</sup>**Maximum occupancy**

2 Persons

**Complete accommodation** 

1 Private bathroom 1 Separated bedroom

**3. floor****Check-in**

08:00 - 22:00 Clock

**Check-out**

08:00 - 12:00 Clock

**Sleeping options****Sleeping room**

1x Double bed (1,40 m x 2 m)

**Description of accommodation**

The penthouse is in a beautiful villa with a separate entrance.

The penthouse is next to nature and it is very quiet. You can live in high rooms with an amazing view and big windows.

The equipment is complete modern and new.

## Equipment & Features



### Basic equipment

- Internet/Wifi
- Community washing machine
- Bedclothes
- Private toilet
- Vacuum cleaner
- TV
- Community dryer
- Towels
- Private parking space
- Cleaning utensils



### First supply

- Toilet paper
- Nespresso capsules
- Soap



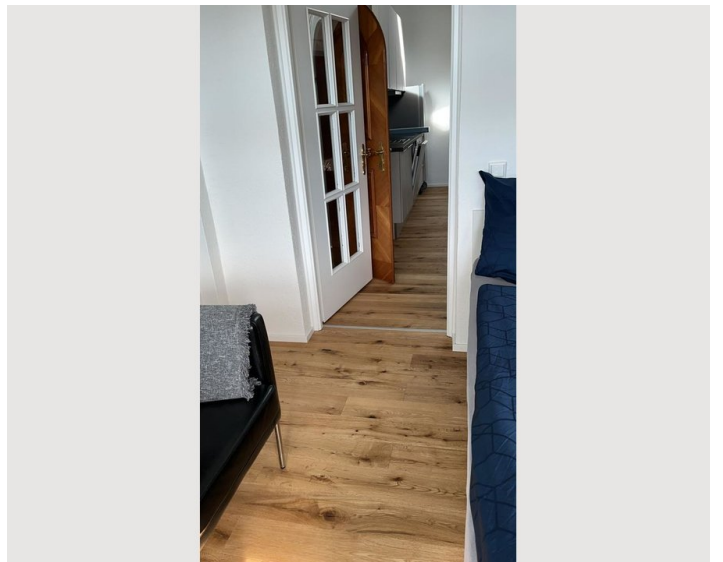
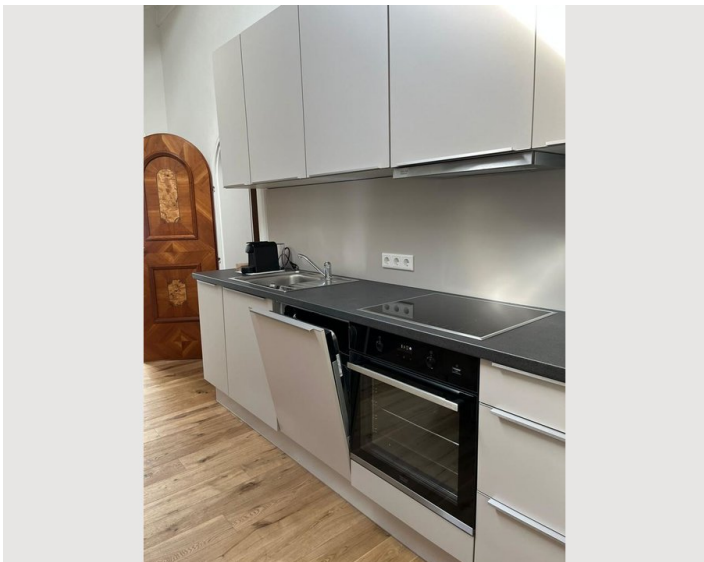
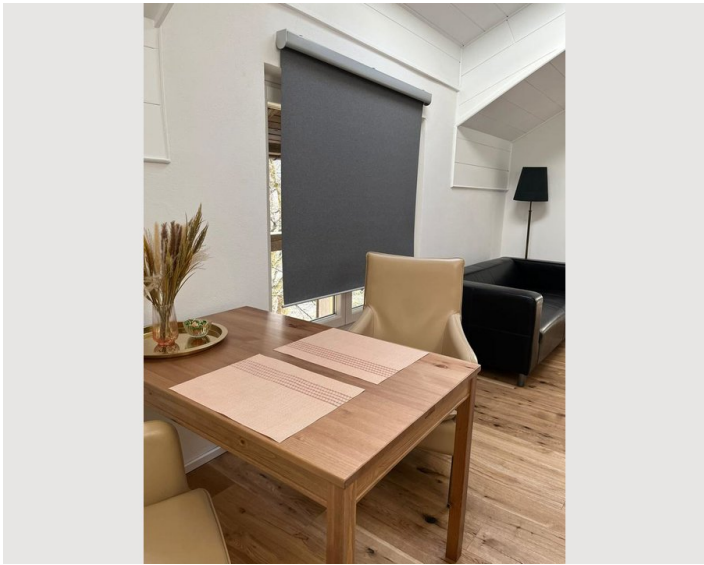
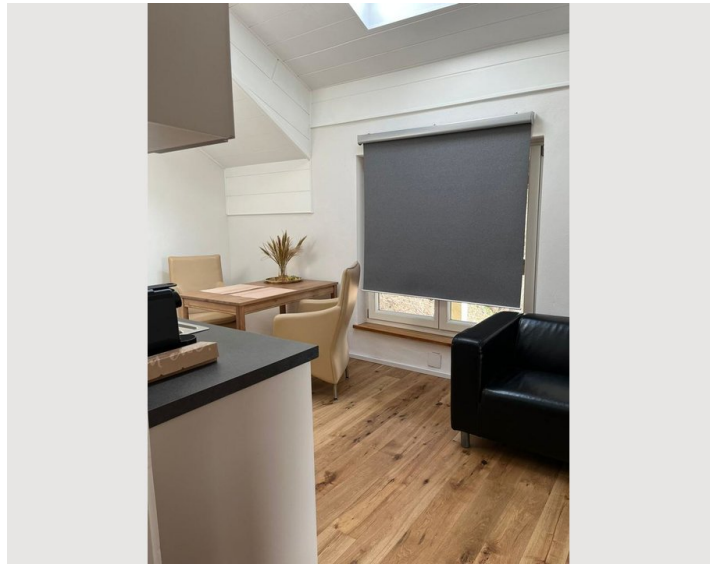
### Kitchen

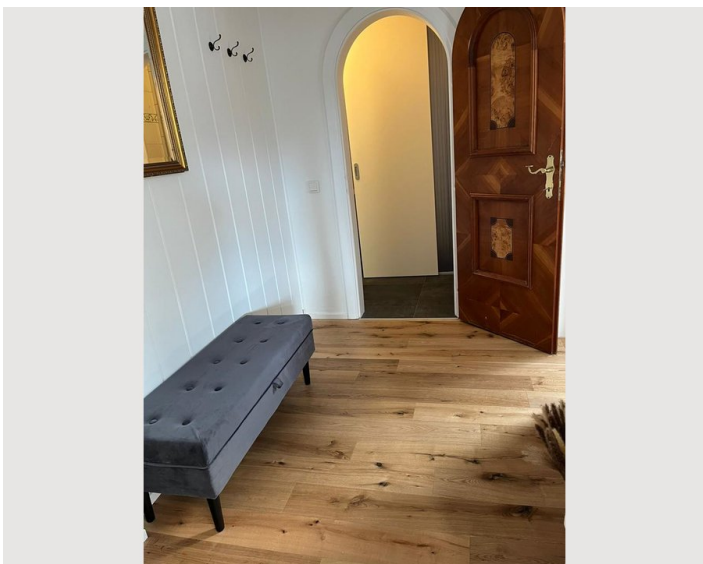
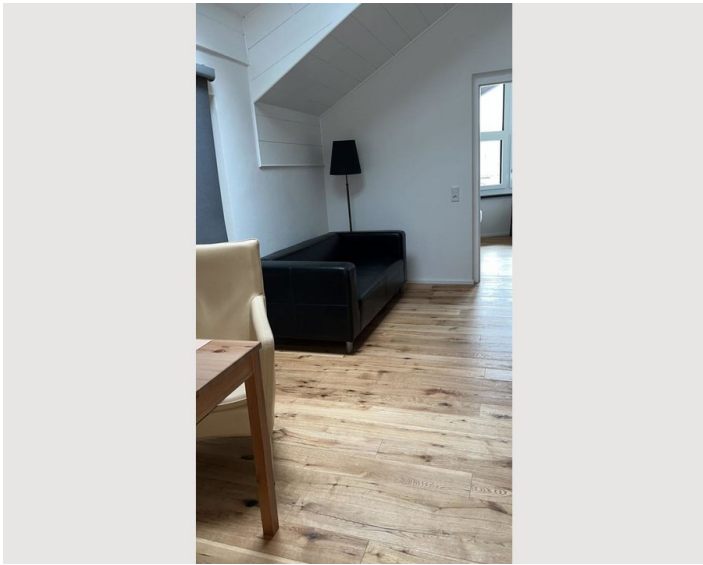
- Private kitchen
- Glasses/Tableware
- Dishwasher
- Cooking utensils
- Espresso machine

## Informations


- Not suitable for children
- Desk/Workplace
- Pets forbidden
- Smoking not allowed
- Private entrance
- Bicycle room free of charge


## Picture gallery






## Infrastructure

 five minutes to go

 twenty minutes to go

 five minutes to go

Everything is within walking distance from the centrally located apartment.

five minutes to go to the bus station and the supermarket

twenty minutes to go to the pharmacy and the train station

with the bicycle on the bike path its twenty minutes to the city center Salzburg

## Location

