



3 ROOM APARTMENT, 1210 VIENNA

The Danube Cloud

Object number: FCPE1

[View and rent online](#)

Period	15/02/ - 15/03/2026
Number of persons	2
Total incl. VAT.	€ 3.472,00
Security deposit	€ 2.900,00

Our light-flooded roof terrace jewel is located directly near the upper Old Danube, Danube Island, Heurigen and vineyards. Perfectly equipped, close to the UNO-City, you are in the city center in 15 minutes with very good public transport connections



Living space

67m²



Maximum occupancy

2 Persons



Complete accommodation [?]

1 Private bathroom 1 Separated bedroom



5. floor

Elevator available



Check-in

11:00 - 18:00 Clock



Check-out

07:00 - 13:00 Clock

Sleeping options

Sleeping room



1x Double bed (1,60 m x 2 m)

Descripton of accommodation

Our sunny, light-flooded apartment is located on the top floor of a renovated apartment building, directly opposite the third largest church in Vienna, St. Leopold.

It is very quietly located, yet you have all the stores of daily needs directly around two corners on Donaufelder Straße.

Within walking distance you can reach the recreation area upper Alte Donau as well as the Donauinsel, also the Donaupark with Donauturm.

The living room with the beautiful dormer offers a breathtaking view of St. Leopold, of the city, up to the Kahlenberg.

A fully equipped open kitchen with a counter and the cozy dining area give the apartment a loft-like character.

The bathroom with toilet is en-suite in the cozy bedroom, next to the anteroom is another toilet.

You will also find a separate study in our apartment, which is equipped with a chaise longue that can also be used as a sleeping accommodation.

Another highlight of our apartment are the two roof terraces, where you can enjoy the sunrise and the sunset.

Features of our Danube Cloud:

- * 3 rooms & bath/WC & guest-WC
- * Sleeping possibilities for 3 persons
- * Access to two roof terraces
- * air conditioning

Kitchen-living room

- * fully equipped kitchen
- * dishes, cooking utensils
- * coffee maker, kettle
- * Plus: coffee and tea provided
- * dining table & chairs, comfortable sofa and relax chair
- * Smart TV
- * High Speed Internet

Bedroom with access to the roof terrace

- * Double bed
- * bedside cabinet, wardrobe
- * bedspreads, pillows

Bathroom

- * Walk-in rain shower
- * Toiletries
- * Hair dryer

Study with access to the roof terrace

- * Desk
- * Chaise longue for 1 person

Equipment & Features



Basic equipment

- Roof-terrace
- TV
- Bedclothes
- Private toilet
- Vacuum cleaner
- Cleaning utensils
- Internet/Wifi
- Private washing machine
- Towels
- Aircondition
- Iron & ironing board
- Hairdryer



First supply

- Toilet paper
- Soap
- Fridge filling on request
- shampoo
- Nespresso capsules



Kitchen

- Private kitchen
- Coffee machine
- Microwave
- Glasses/Tableware
- Dishwasher

Informations

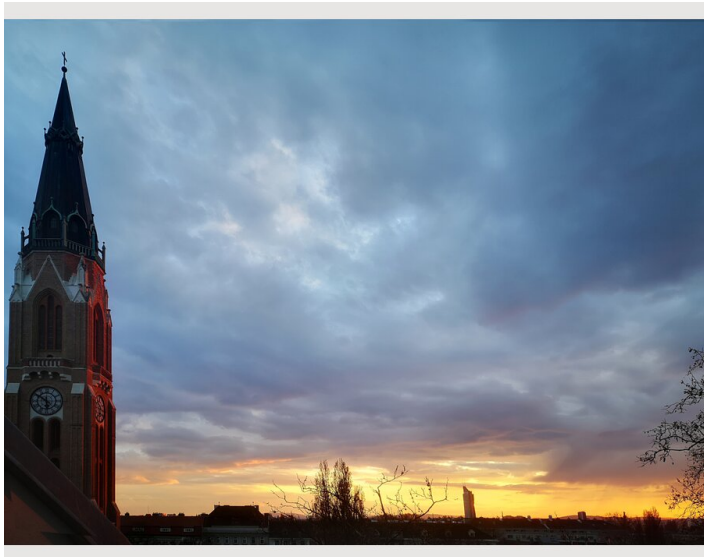
- Smoking not allowed
- Desk/Workplace
- Pets on request
- Bicycle room free of charge
- Short-term parking zone subject to a charge
- Private entrance
- Regular cleaning free of charge

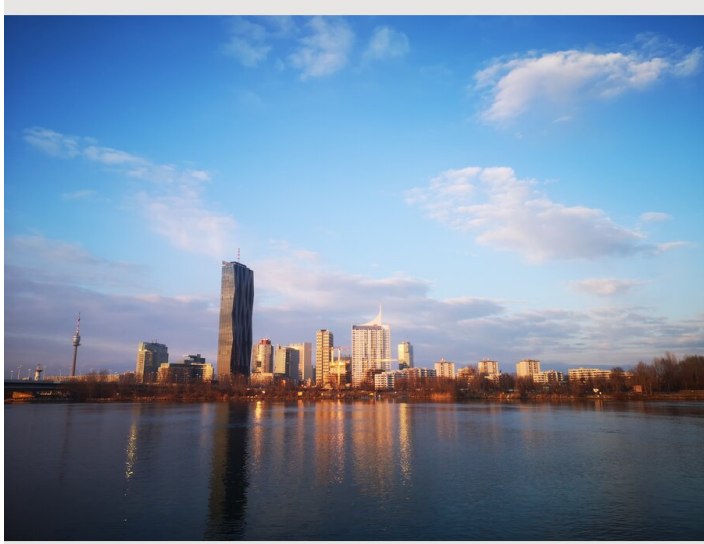
Picture gallery





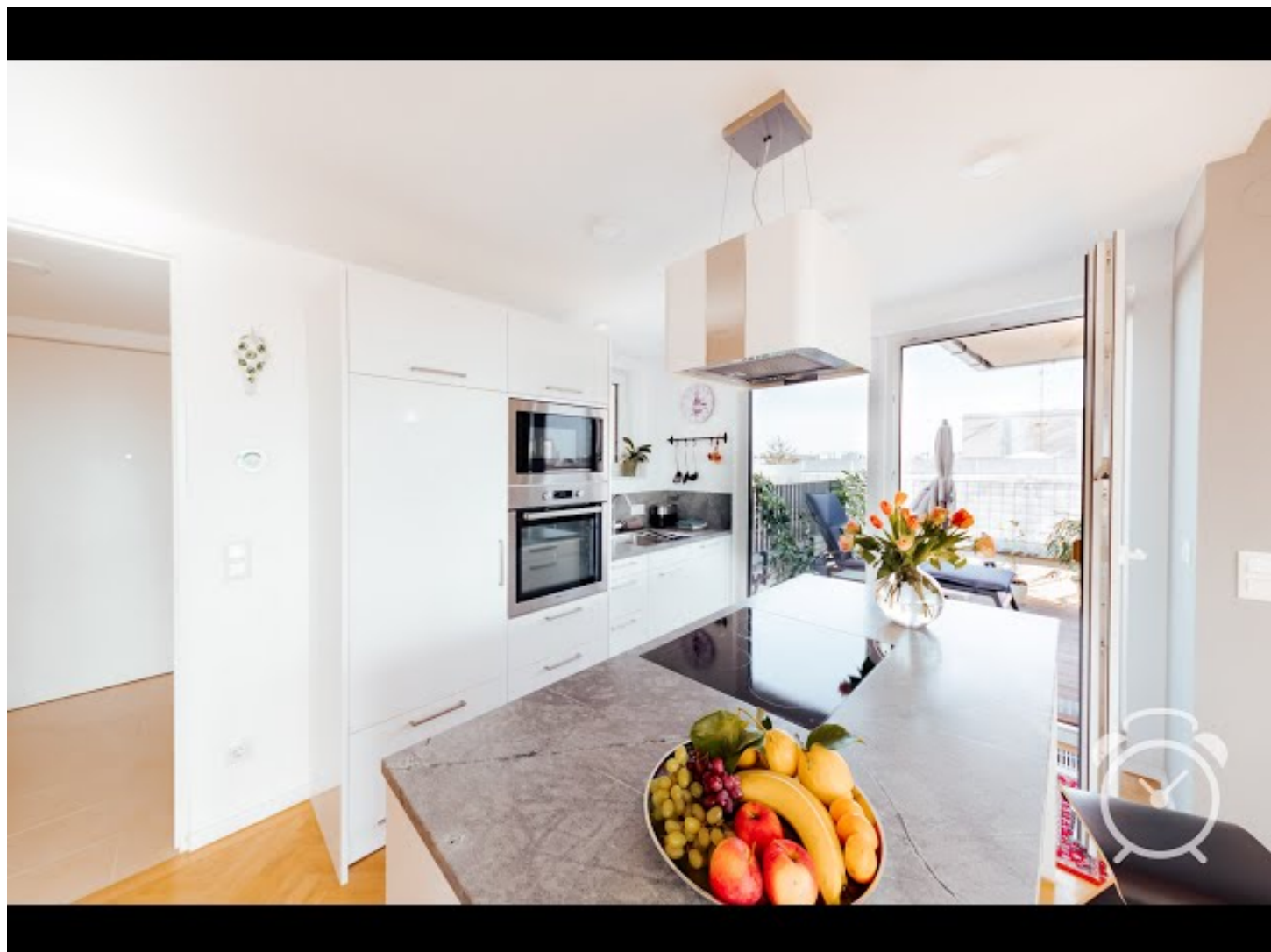






Video

Goto Video



Infrastructure



Directly accessible from Railway station Floridsdorf by rapid transit in approx. 20 minutes



in about 15 minutes by suburban railroad or subway



about 200 Meter Tramway



Directly accessible from Railway station Floridsdorf by rapid transit in approx. 20 minutes



about 200 meters walking distance

In the immediate vicinity are several supermarkets, drugstore, tobacconist, bakery and a pharmacy.
The streetcar is also within walking distance in three minutes.
The S-Bahn and U-Bahn station Floridsdorf is one stop away by streetcar or a 10-minute walk.

Location

