

STUDIO APARTMENT, 5020 SALZBURG

little oasis in a perfect location

Object number: GUAЕ1

[View and rent online](#)

Period	08/07/ - 08/08/2025
Number of persons	2
Total incl. VAT.	€ 2.049,69
Security deposit	€ 1.400,00

Small oasis with optimal transport connections and yet in a quiet location! 1 min walk to the main train station and bus station. 10min walk to the popular Andräviertel and Mirabellgart.



Living space

29m²



Maximum occupancy

2 Persons



Complete accommodation [?]

1 private bathroom 1 Living-Sleepingroom



2. floor



Check-in

05:00 - 23:00 Clock



Check-out

00:00 - 16:00 Clock

Sleeping options

Living and sleeping



1x Double bed (1,40 m x 2 m)

Descripton of accommodation

Despite the proximity to the train station, this small oasis surprises with its pleasant tranquility to relax and at the same time offers the possibility to be extremely flexible in organizing your own daily routine.

The newly renovated apartment is located in an old building with high ceilings and is therefore pleasantly spacious. You can enjoy the sun at the kitchen window until the early afternoon, for which two folding chairs are available by the window.

You will feel comfortable here and love the advantages of the location!

Equipment & Features



Basic equipment

- Internet/Wifi
- Private washing machine
- Bedclothes
- Private toilet
- Iron & ironing board
- Hairdryer
- TV
- Private dryer
- Towels
- Vacuum cleaner
- Cleaning utensils



First supply

- Toilet paper
- Nespresso capsules
- Soap



Kitchen

- Private kitchen
- Glasses/Tableware
- Dishwasher
- Cooking utensils
- Espresso machine

Informations

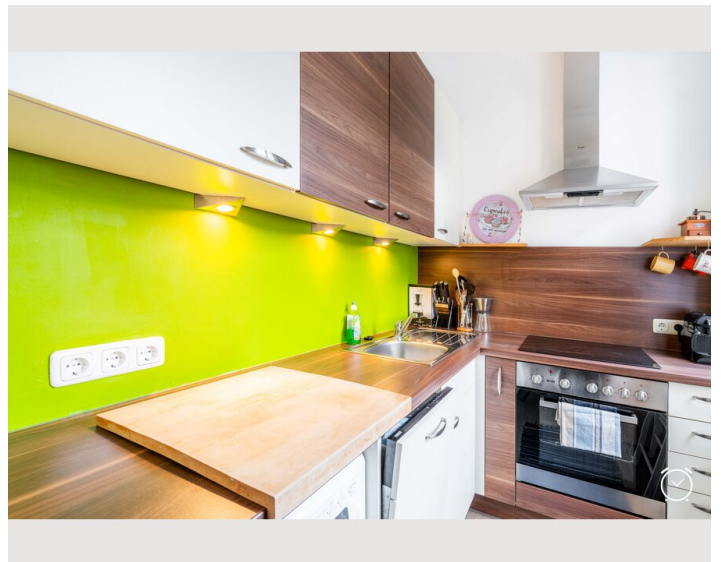
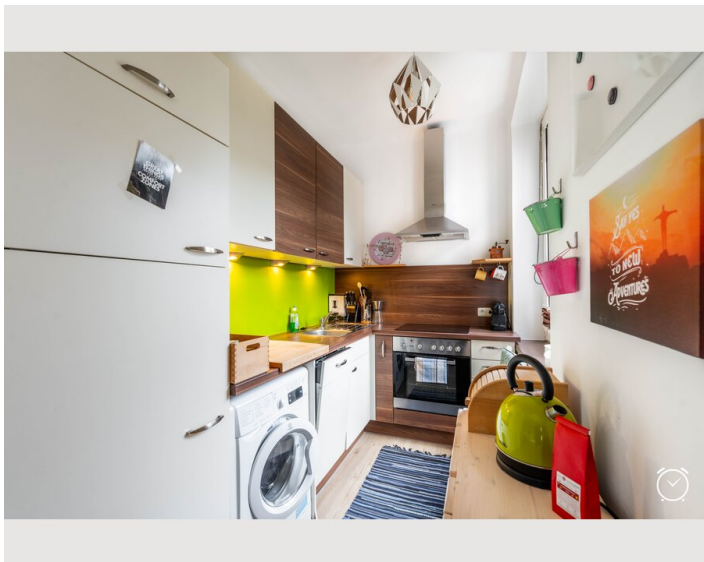
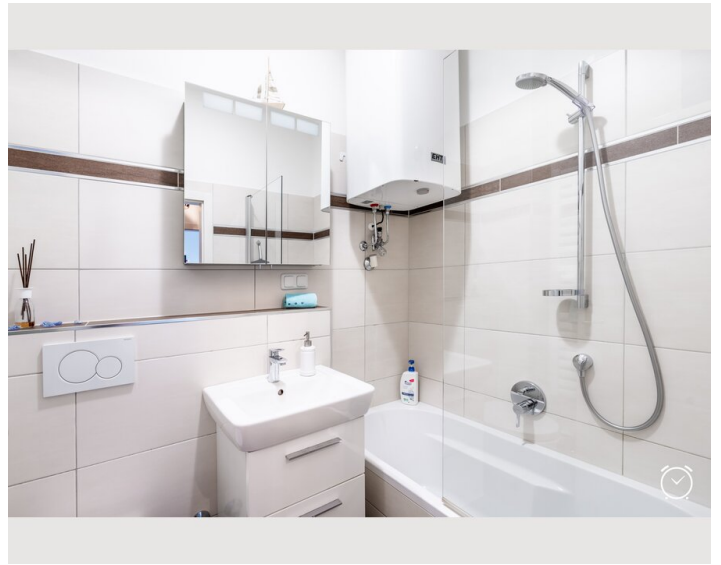
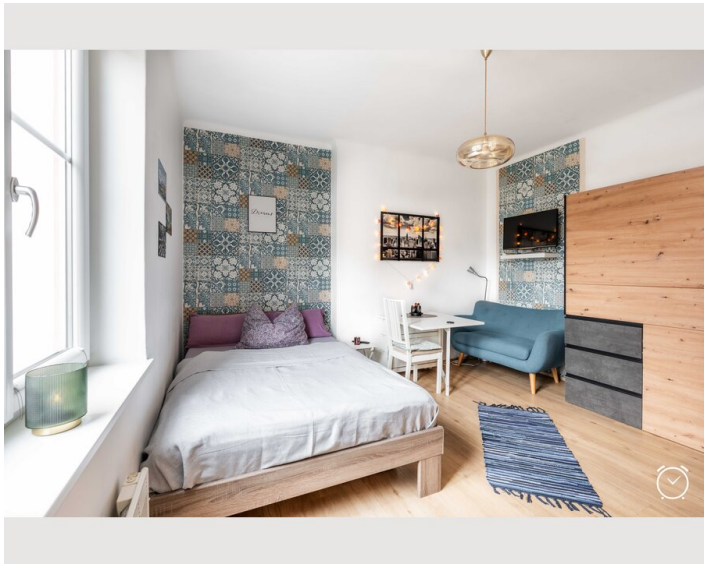
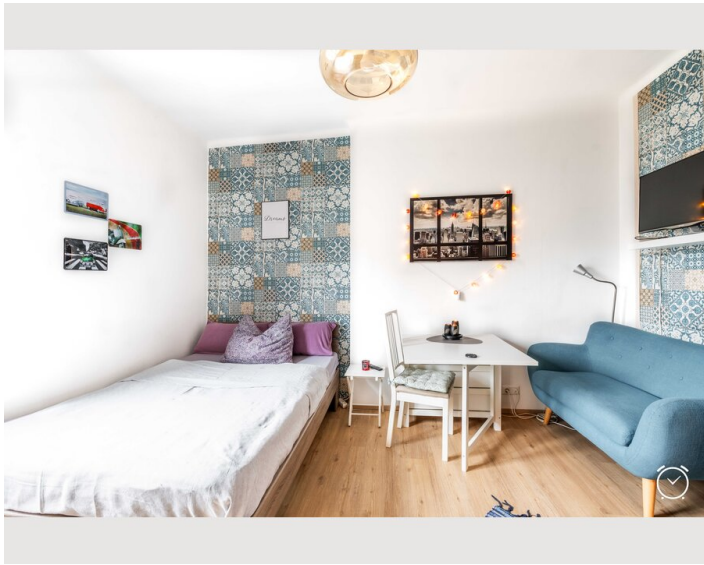
- Smoking not allowed
- Regular cleaning at extra cost
- Pets forbidden
- Bicycle room free of charge

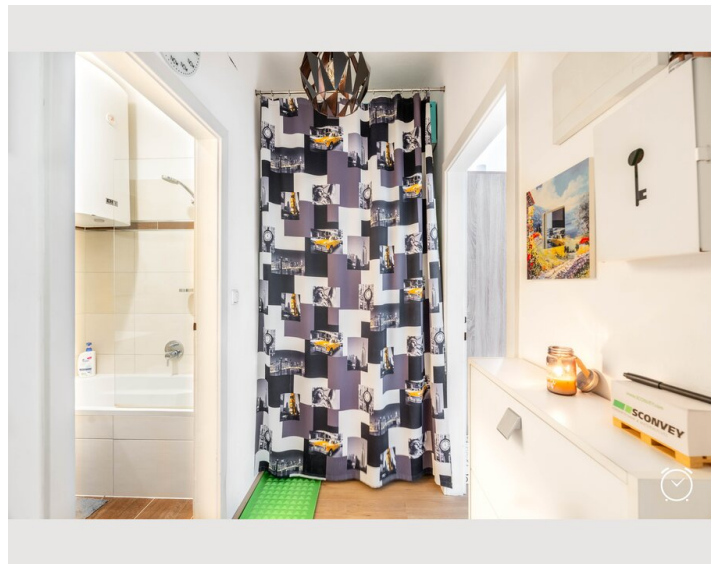
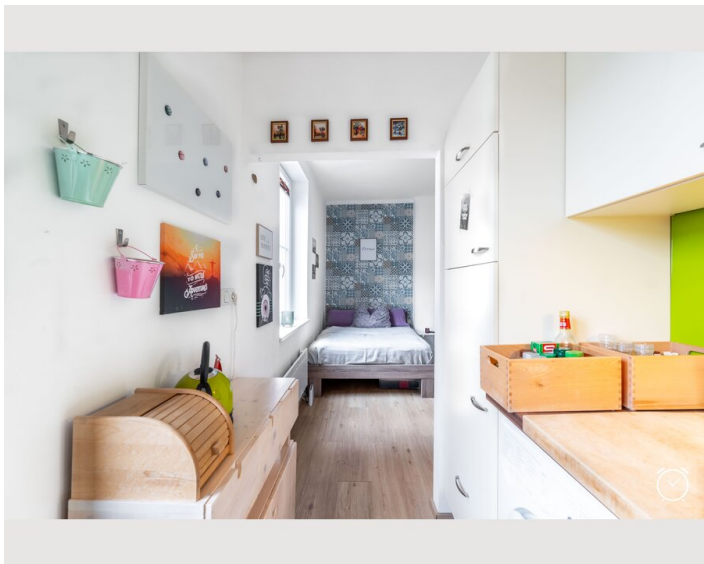
Additional services

- car parking space (€ 145,00)

All prices are gross per month - billing is done directly with the lessor.

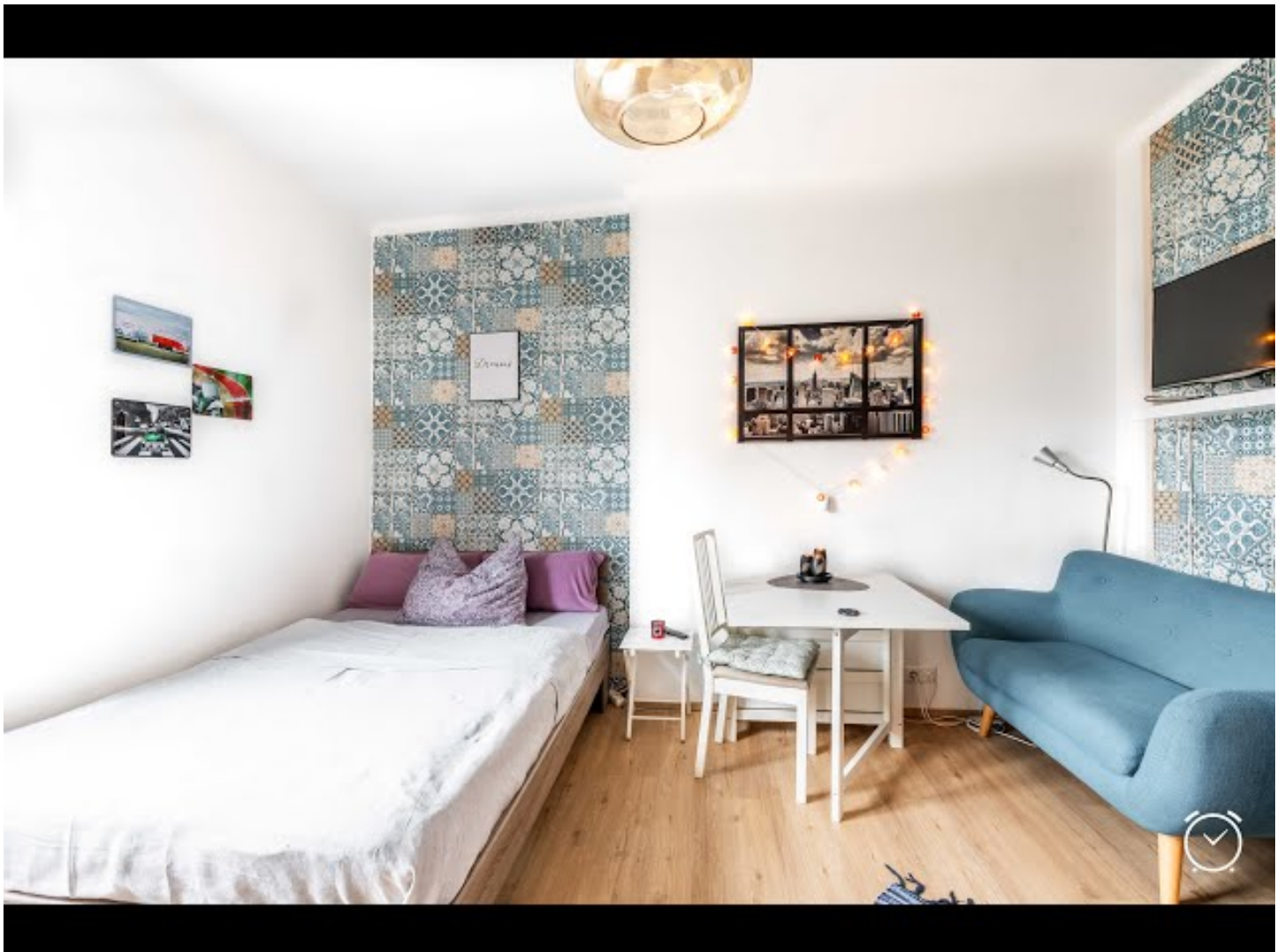
Picture gallery






Video


[Goto Video](#)




Infrastructure

 1 min walk

 1 min walk

 1 min walk

 10-15 min walk

Shop ("Spar" at the train station) open from Mon-Sun. Shopping center ("Forum") at the train station with pharmacy, drugstore, Starbucks, fast food restaurants, etc. just 1 min walk away. 1 min walk to transport (train station and bus). The city center can be reached quickly and easily on foot, by bike or by bus.

Location

