



STUDIO APARTMENT, 1100 VIENNA

## Modern Studio - Central Station

Object number: VIE10

[View and rent online](#)

|                          |                     |
|--------------------------|---------------------|
| <b>Period</b>            | 11/06/ - 11/07/2025 |
| <b>Number of persons</b> | 2                   |
| <b>Total incl. VAT.</b>  | € 1.090,06          |
| <b>Security deposit</b>  | € 900,00            |

→ 5 minutes to the main station → Restaurants, supermarkets and shopping street in front of the door → Comfortable working area → Smart TV with NETFLIX → comfortable double bed → Nespresso coffee → Fully equipped kitchen



### Living space

30m<sup>2</sup>



### Maximum occupancy

2 Persons



### Complete accommodation <sup>?</sup>

1 private bathroom 1 Living-Sleepingroom



### 2. floor



### Check-in

15:00 - 00:00 Clock



### Check-out

00:00 - 11:00 Clock

## Sleeping options

### Living and sleeping



1x Double bed (1,60 m x 2 m)

## Description of accommodation

Welcome to this newly furnished City Apartment, which invites you to a great stay in Vienna in a central location and offers everything:

You can start your day in peace with a Nespresso coffee in the dining area or on your relax chair and enjoy all the nice benefits of this apartment.

The apartment has been furnished with attention to detail and features a comfortable double bed (160x200), a smart TV with Netflix and a fully equipped kitchen with stove, fridge and all the equipment you need.

Fast Wi-Fi is available and combined with a cozy workspace, it offers ideal home office options.

In the beautiful natural light bathroom everything is available for a relaxing stay and of course we provide fresh towels and all essentials like shower gel , shampoo and hairdryer.

## Equipment features



### Basic equipment

- Internet/Wifi
- Bedclothes
- Private toilet
- Iron & ironing board
- Hairdryer
- TV
- Towels
- Vacuum cleaner
- Cleaning utensils



### First supply

- Toilet paper
- Soap
- shampoo
- Nespresso capsules



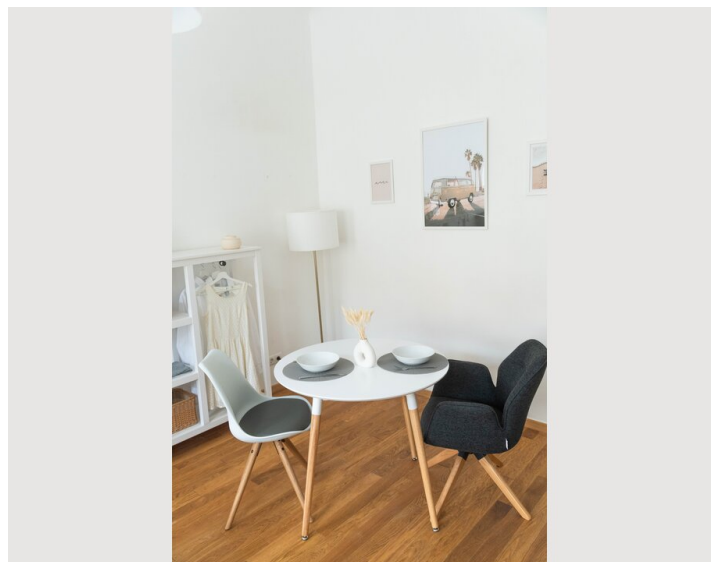
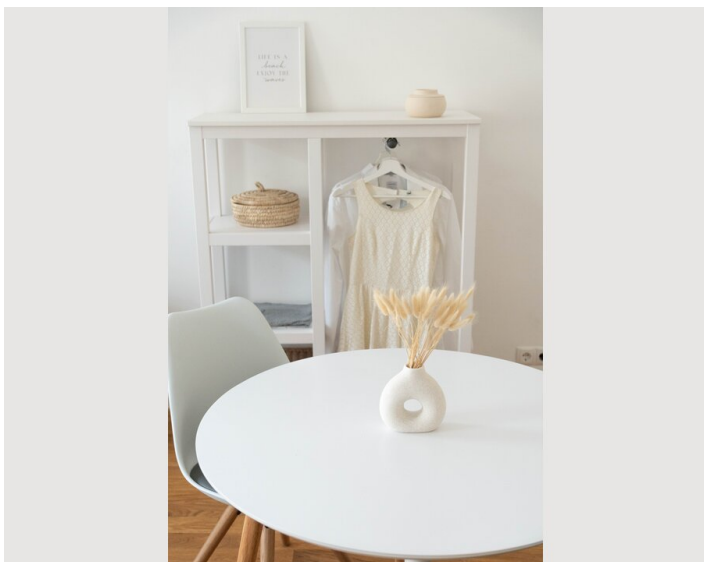
### Kitchen

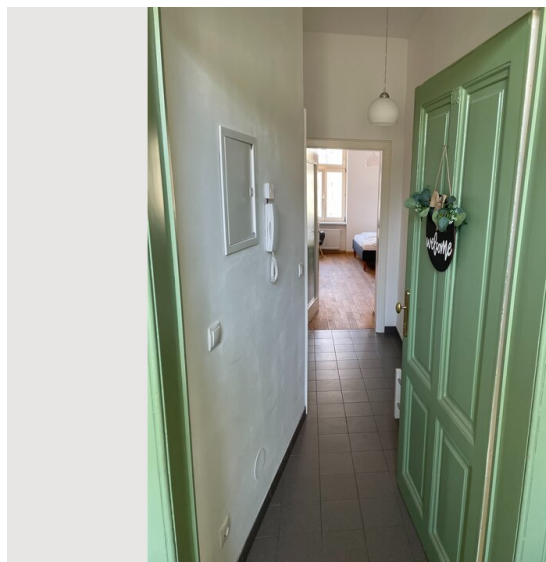
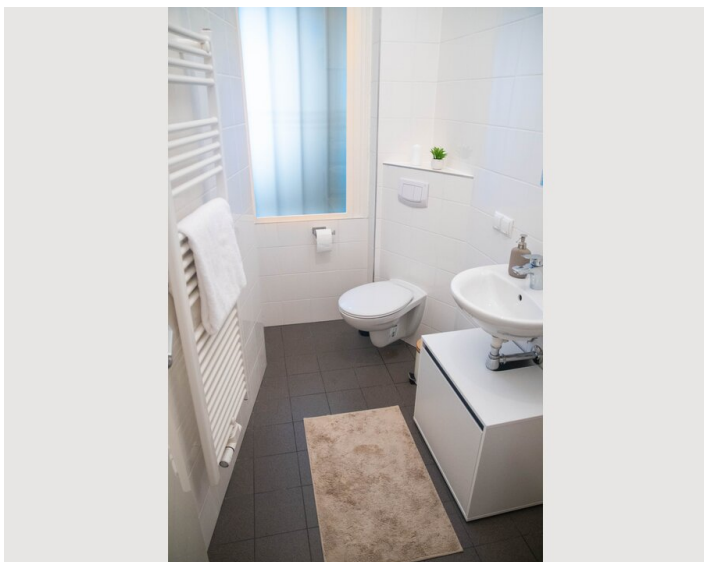
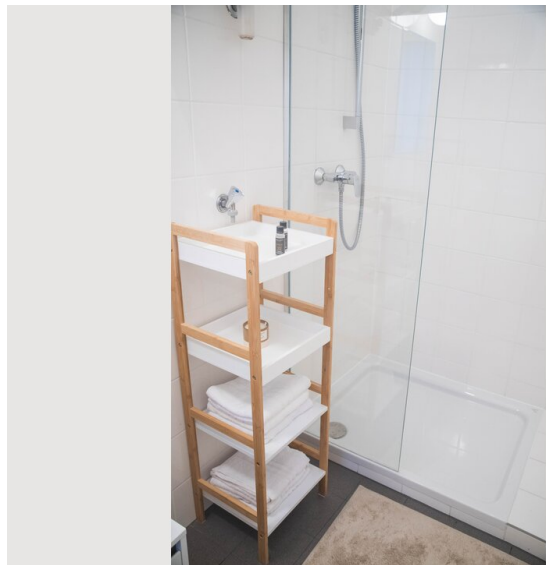
- Private kitchen
- Cooking utensils
- Espresso machine
- Kitchenette
- Glasses/Tableware
- Microwave

## Informations

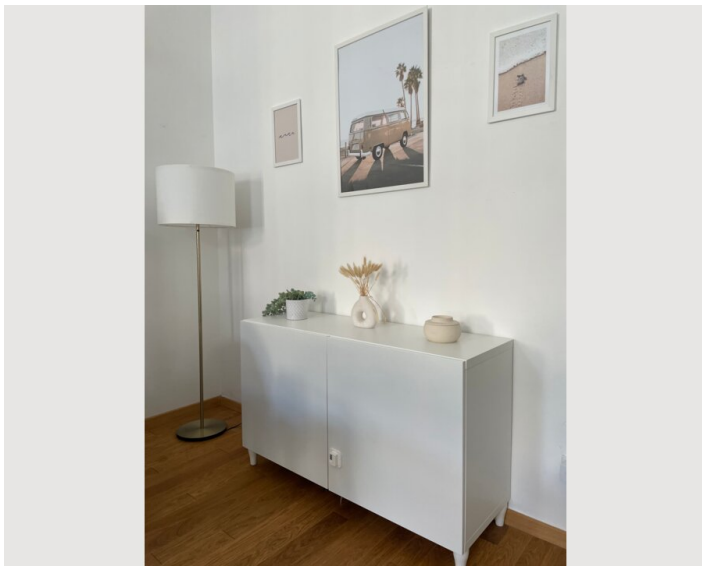
- Suitable for construction workers
- Desk/Workplace
- Regular cleaning at extra cost
- Smoking not allowed
- Pets forbidden

## Picture gallery











### Infrastructure

 10 min by walking or 5 min with the subway

 25 min by train

 All supermarkets (Hofer, Lidl, Spar, Billa) available in < 5 min

---

The location is very good:

Only a few minutes walk to the main station and well connected to all sights (Belvedere Palace 10 min, State Opera 10 min, St. Stephen's Cathedral 12 min, Prater 15 min, Hofburg 20 min). Due to the proximity to the main station, the apartment is very well connected to public transport by underground and trains and the Vienna airport can be reached in about 20 to 25 minutes.

## Location

