



3 ROOM APARTMENT, 1080 VIENNA

Apartment Tigergasse

Object number: BLAP2

[View and rent online](#)

top floor apartment on 2 floors (maisonette) with balcony and roof terrace in a quiet side street between Lerchenfelder- and Josefstädter Straße. Diagonally vis à vis is a small park (Tigerpark) with playground for young and adults.

Period	11/03/ - 11/04/2026
Number of persons	2
Total incl. VAT.	€ 2.253,38
Security deposit	€ 1.700,00



Living space

82m²



Maximum occupancy

4 Persons



Complete accommodation [?]

1 Private bathroom 2 Separated bedrooms



4. floor

Elevator available



Check-in

10:00 - 15:00 Clock



Check-out

11:00 - 14:00 Clock

Sleeping options

Bedroom 1



1x Double bed (1,80 m x 2 m)

Bedroom 2



1x Double bed (1,40 m x 2 m)

Descripton of accommodation

Modern maisonette (82m²). 2 bedrooms, 1 workroom, bathroom and toilet are on the entrance floor, with all rooms accessible exclusively from the anteroom. Dining-living room with kitchen is located above, on the upper floor, and is accessible via a staircase; in front of it a small balcony (3.83m²), above it a roof terrace (11.53m²). Due to its size and construction, the roof terrace is an additional outdoor space, which, in addition to a wonderful view of the surroundings, allows a variety of uses (fitness, party, playground, gardening).

Equipment & Features



Basic equipment

- Balcony
- TV
- Bedclothes
- Private toilet
- Vacuum cleaner
- Cleaning utensils
- Roof-terrace
- Private washing machine
- Towels
- Garage
- Iron & ironing board



First supply

- Toilet paper
- Soap
- Fridge filling on request



Kitchen

- Kitchenette
- Glasses/Tableware
- Filter coffee
- Dishwasher

Informations

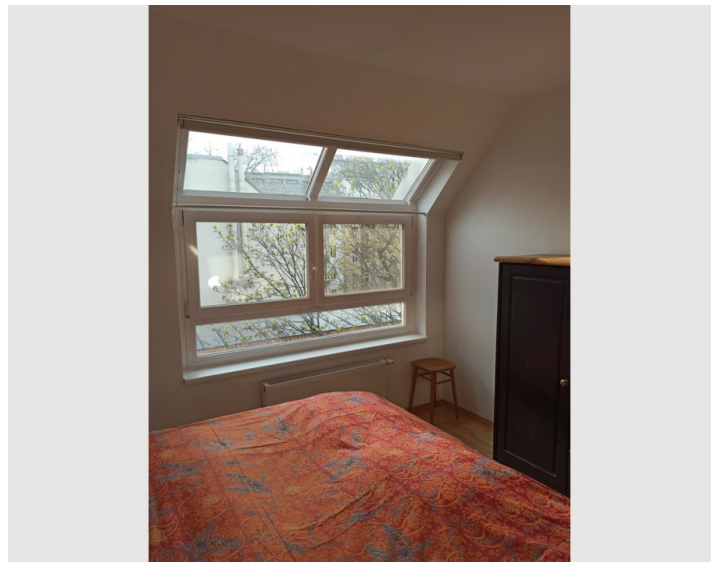
- Suitable for children
- Short-term parking zone subject to a charge
- Private entrance
- Bicycle room free of charge
- Smoking not allowed
- Desk/Workplace
- Pets forbidden

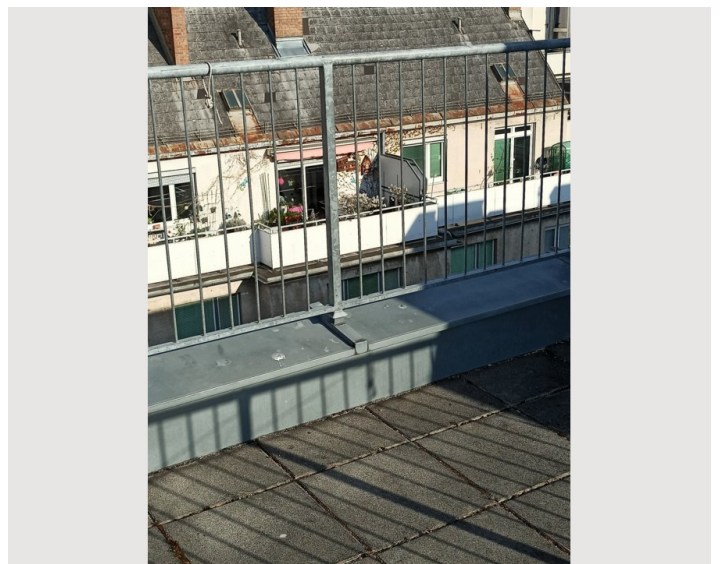
Additional services

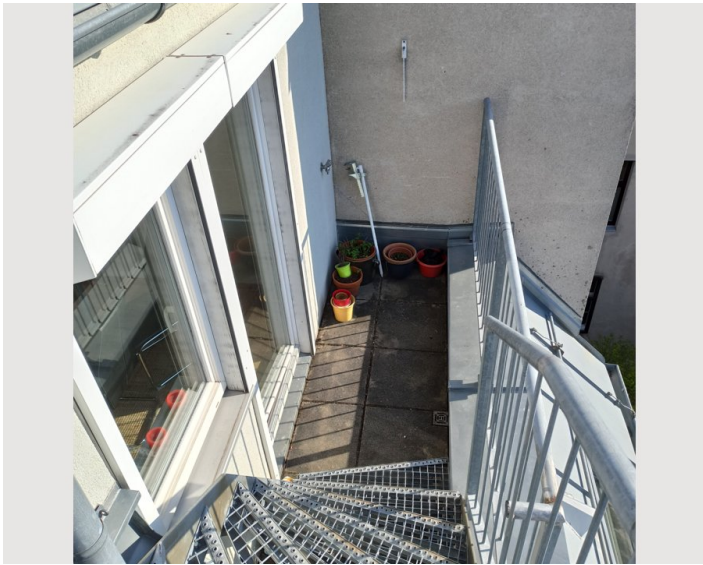
- parking Aerea (€ 150,00)

All prices are gross per month - billing is done directly with the lessor.






Picture gallery







Infrastructure

-  on Burggasse, streetcar stops on Lerchenfelder and Josefstädter Straße are in the immediate vicinity
-  Central, West, Franz Josef Railway Station
-  Linie 46, U3, Cat
-  Easily accessible by foot, by bike (cycle path Pfeilgasse) or by public transport.
-  Nearby bakery, grocery store, pharmacy, weekly market, hairdresser

In walking distance are 2 bakeries, food markets, pharmacies, hairdressers, bike stores, stores for household goods, paper stores, tobacconists, a weekly market. Josefstadt is a culinary Eldorado with many posh, middle-class, dignified and simple restaurants (of many nationalities), inns, pizzerias, street pubs, beer pubs, bars, etc.. In addition, the Josefstädter and Volkstheater are within walking distance, these theaters can also be reached by public transport, as well as Burgtheater, Opera or Volksoper.

Location

