



3 ROOM APARTMENT, 6334 SCHWOICH

Hattenhof Apartment Panoramablick

Object number: AFKC1

[View and rent online](#)

Period	20/12/2025 - 20/01/2026
Number of persons	2
Total incl. VAT.	€ 2.505,94
Security deposit	€ 1.900,00

Apartment Panoramablick for 1-6 persons 70 m² + 10 m² terrace / sec. floor. Ideal for people who like to live a bit more spacious and want to enjoy the beautiful view from the cozy terrace in an absolutely quiet location on the mountain.



Living space

70m²



Maximum occupancy

6 Persons



Complete accommodation [?]

2 Private bathrooms 3 Separated bedrooms



2. floor



Check-in

16:00 - 21:00 Clock



Check-out

07:00 - 09:00 Clock

Sleeping options

Bedroom 1



1x Double bed (1,80 m x 2 m)



1x Sofa bed (1 person)

Bedroom 2



1x Double bed (1,80 m x 2 m)

Bedroom 3



1x Double bed (1,60 m x 2 m)

Descripton of accommodation

You can expect a newly furnished apartment, modern and cozy, equipped with wooden floors, 2 Flat TV, and WLAN

- a large bright, very cozy eat-in kitchen with couch, with balcony and terrace
- the kitchen is well equipped with high quality dishes, all important cooking utensils, dish towels
- 3 bedrooms with boxspring beds
- 2 bathrooms - shower 'WC, hairdryer and bath towels
- one room offers its own bathroom WC
- one room offers a wonderful view of the nature directly from the bed
- one room has its own flat TV

The apartment is located on the 2nd floor

You are welcome to harvest your herbs in our garden.

Equipment & Features



Basic equipment

- Balcony
- Internet/Wifi
- Community washing machine
- Towels
- Private parking space
- Iron & ironing board
- Terrace
- TV
- Bedclothes
- Private toilet
- Vacuum cleaner
- Hairdryer



Fireplace

- Charcoal grill



Pool

- Swimming pond



First supply

- Toilet paper
- Soap



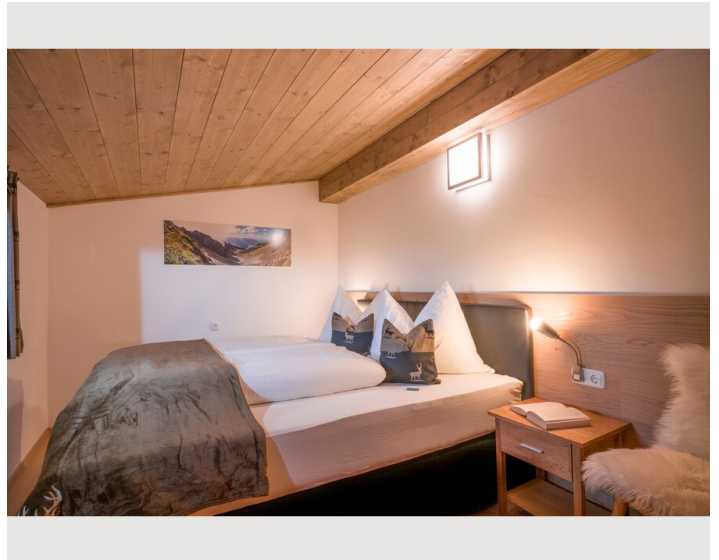
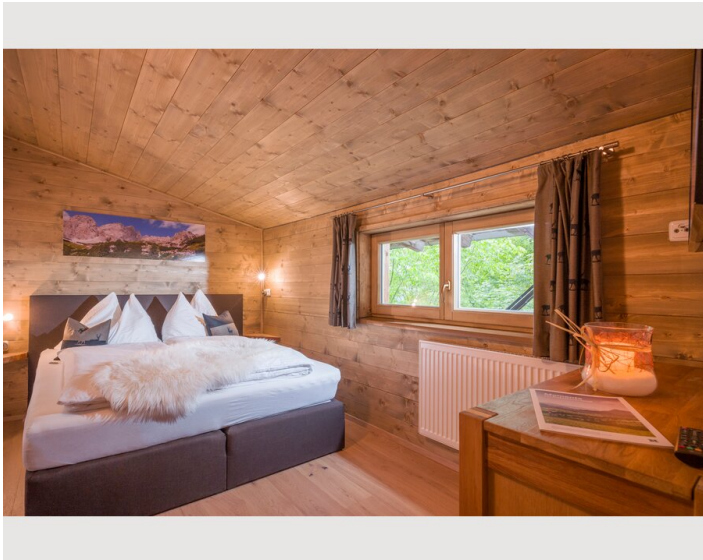
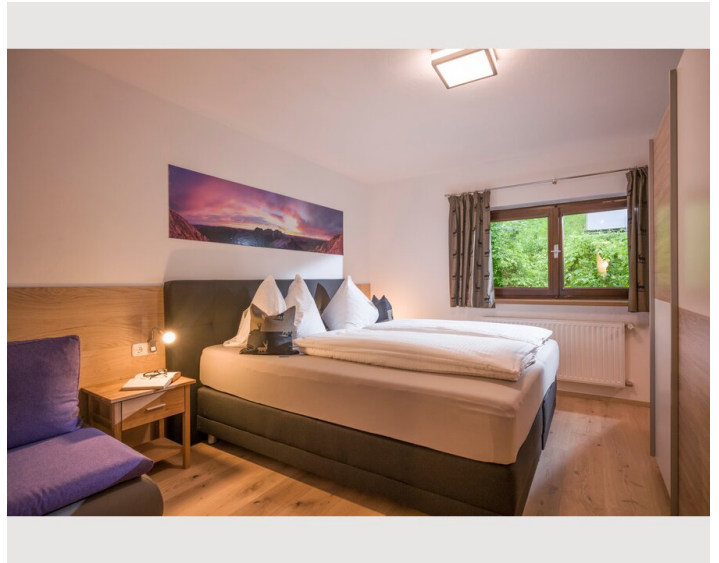
Kitchen

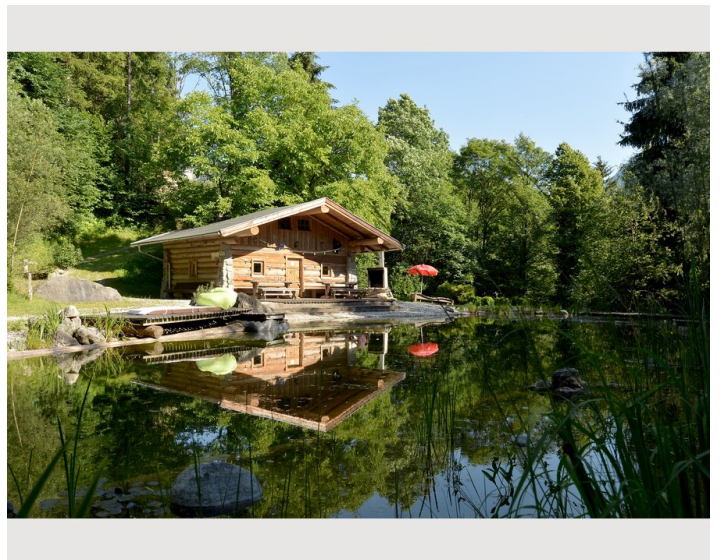
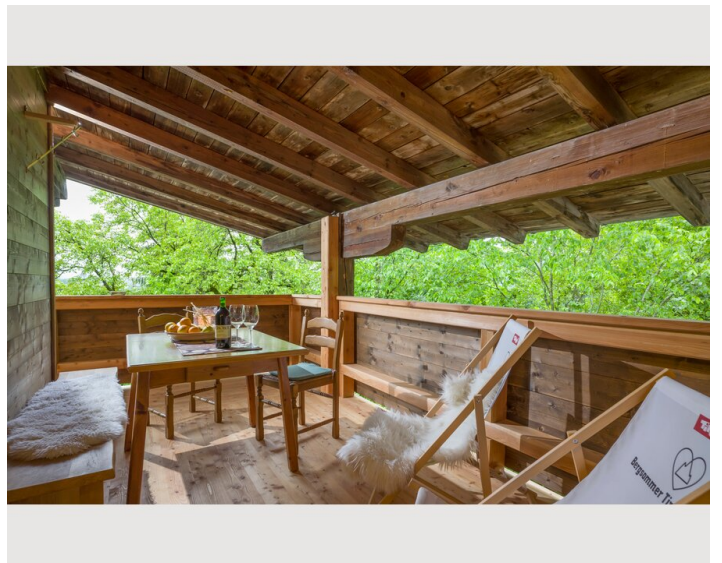
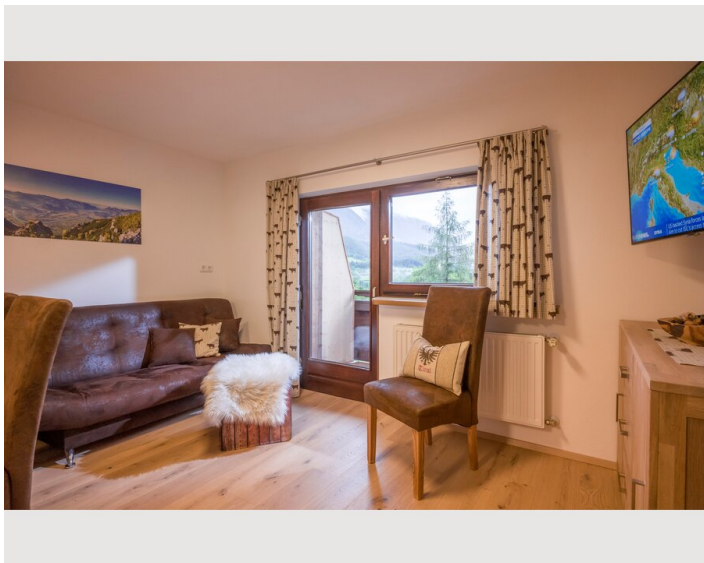
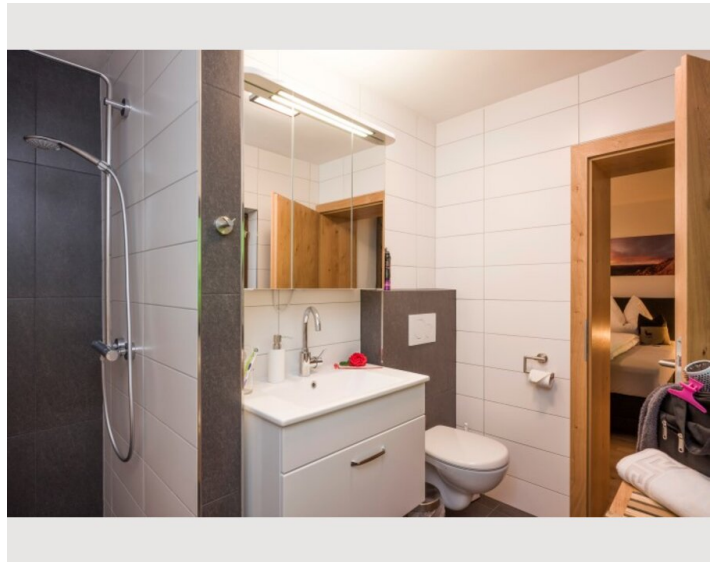
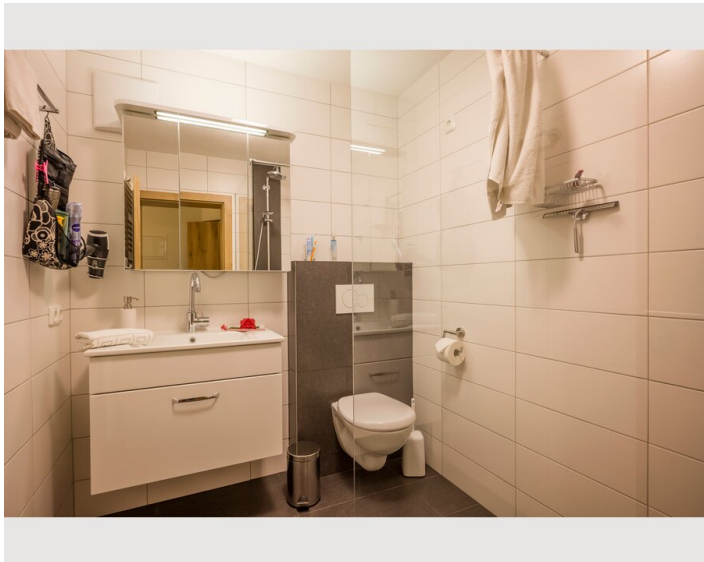
- Private kitchen
- Glasses/Tableware
- Dishwasher
- Cooking utensils
- Filter coffee

Informations

- Suitable for construction workers
- Pets forbidden
- Bicycle room free of charge
- Smoking not allowed
- Regular cleaning at extra cost

Picture gallery










Infrastructure

 foodmarket 3 km

 bus stop 1km

 center 4km

 train station 4km

 airport Innsbruck 75 km

 airport Munich 135 km

Distances:

4 km motorway(A12 Inntal-motorway) (exit Kufstein south)

3,5 km Schwoich village (supermarket)

8 km Skiing area Wilder Kaiser

Langkampfen industrial area 9,3 km

Kundl Novartis 22 km

75 km Innsbruck - 118 km Salzburg - 95 km Munich.

You can expect an absolutely idyllic quiet solitary location on the mountain, with a magnificent panoramic view of the ski world "Wilder Kaiser".

A small paradise in the middle of nature!

All nature lovers and equally sports enthusiasts guests come with us at any time of year at their expense.

Location

