



2 ROOM APARTMENT, 8010 GRAZ

## Geidorf - close to city centre

Object number: VWMP1

[View and rent online](#)

<b>Period</b>	30/01/ - 02/03/2026
<b>Number of persons</b>	2
<b>Total incl. VAT.</b>	€ 1.740,62
<b>Security deposit</b>	€ 1.300,00

Quiet yet central location in Geidorf district. Comfortable apartment with all amenities.



### Living space

65m<sup>2</sup>



### Maximum occupancy

2 Persons



### Complete accommodation <sup>?</sup>

1 Private bathroom 1 Separated bedroom



### 1. floor



### Check-in

14:00 - 22:00 Clock



### Check-out

07:00 - 11:00 Clock

## Sleeping options

### Sleeping room



1x Double bed (1,60 m x 2 m)

## Descripton of accommodation

Residential area in Geidorf District. Close to the Historie Centre - 10 min walking. Tram and bus in close proximity, as well as supermarkets and the Hasnerplatz farmer's market. The Apartment is situated on the first floor and is fully equipped with wooden floors. New, well equipped kitchen with integrated dining place. Living room with TV and desk. Printer available, PC and WLAN upon request. Balcony with garden view. Quiet bedroom located at the garden side, Bathroom with shower cabin, towel rack, hair dryer and washing machine. Separate toilet. District heating, individually adjustable. Badezimmer mit Waschbecken, Dusche, Handtuchtrockner und Waschmaschine. Cost-free parking opportunity at 10 minutes walking distance.

## Equipment & Features



### Basic equipment

- Balcony
- TV
- Private washing machine
- Bedclothes
- Private toilet
- Iron & ironing board
- Hairdryer
- Garden sharing
- Printer
- Community dryer
- Towels
- Vacuum cleaner
- Cleaning utensils



### First supply

- Toilet paper
- Soap
- Fridge filling on request
- shampoo
- Nespresso capsules



### Kitchen

- Private kitchen
- Glasses/Tableware
- Dishwasher
- Cooking utensils
- Espresso machine

## Informations

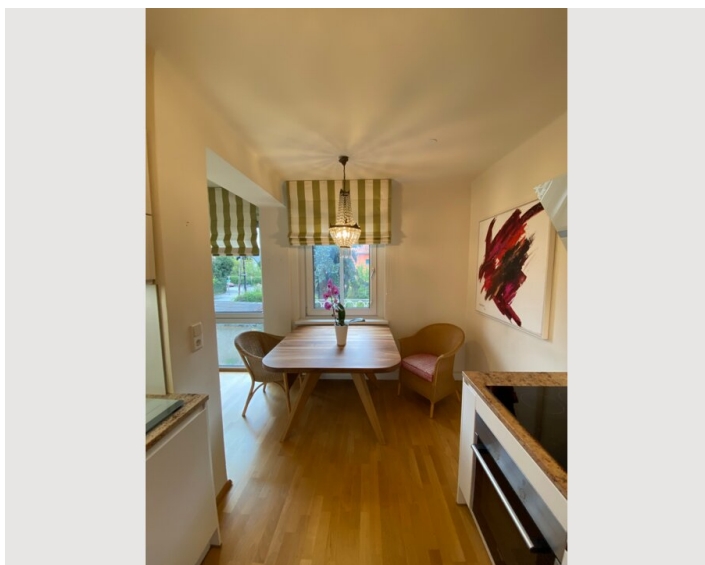
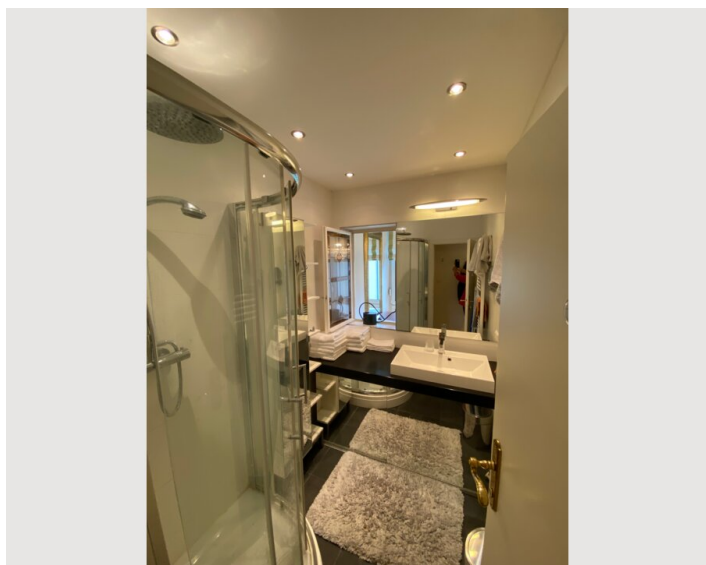
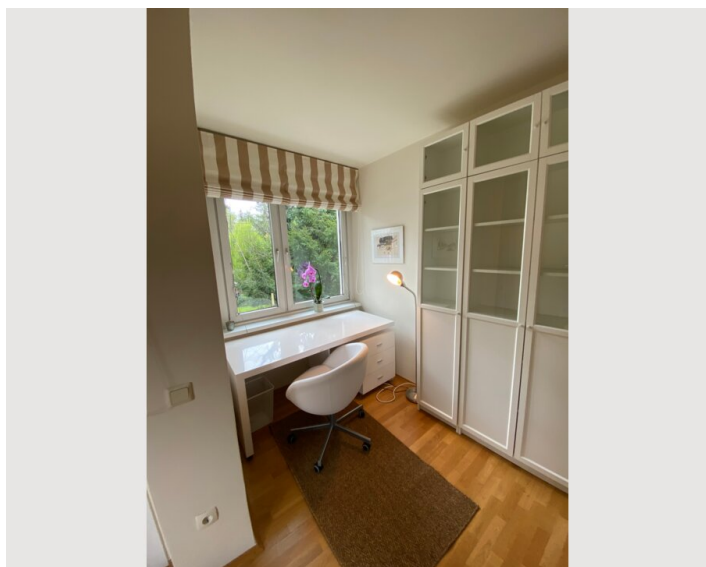
- Suitable for children
- Short-term parking zone subject to a charge
- Private entrance
- Regular cleaning at extra cost
- Smoking not allowed
- Desk/Workplace
- Pets forbidden
- Bicycle room free of charge

## Additional services

- Bicycle

All prices are gross per month - billing is done directly with the lessor.

## Picture gallery










### Infrastructure

 Right in front of the building

 2 min walking

 10 min by tram



 10 min walking

---

Pharmacy, supermarkets and other shopping possibilities all within walking distance.

Location

