



STUDIO APARTMENT, 1030 VIENNA

Apartment Wellcome Rennweg

Object number: FFNK1

[View and rent online](#)

Period	24/07/ - 24/08/2025
Number of persons	2
Total incl. VAT.	€ 1.640,62
Security deposit	€ 1.300,00

Very bright and cozy apartment with the best transport connections 8 minutes from Vienna city center



Living space

42m²



Maximum occupancy

2 Persons



Complete accommodation [?]

1 private bathroom 1 Living-Sleepingroom



6. floor

Elevator available



Check-in

08:00 - 20:00 Clock



Check-out

08:00 - 20:00 Clock

Sleeping options

Living and sleeping



1x Double bed (1,60 m x 2 m)

Descripton of accommodation

This wonderful, very bright and ready-to-move-in apartment is on the 6th floor of a well-kept residential building near the Vienna-Rennweg S-Bahn station. It was completely renovated and newly furnished a few months ago. All important locations can be reached in a few minutes. There are 2 bicycles with lighting available, with which you can move very well and individually via the good Viennese cycle network.

Equipment & Features



Basic equipment

- Internet/Wifi
- TV
- Community washing machine
- Bedclothes
- Private toilet
- Iron & ironing board
- Hairdryer
- Music system/docking station
- Private washing machine
- Private dryer
- Towels
- Vacuum cleaner
- Cleaning utensils



First supply

- Toilet paper
- Soap
- shampoo
- Nespresso capsules



Kitchen

- Private kitchen
- Glasses/Tableware
- Filter coffee
- Microwave
- Cooking utensils
- Espresso machine
- Dishwasher
- Steam cooker

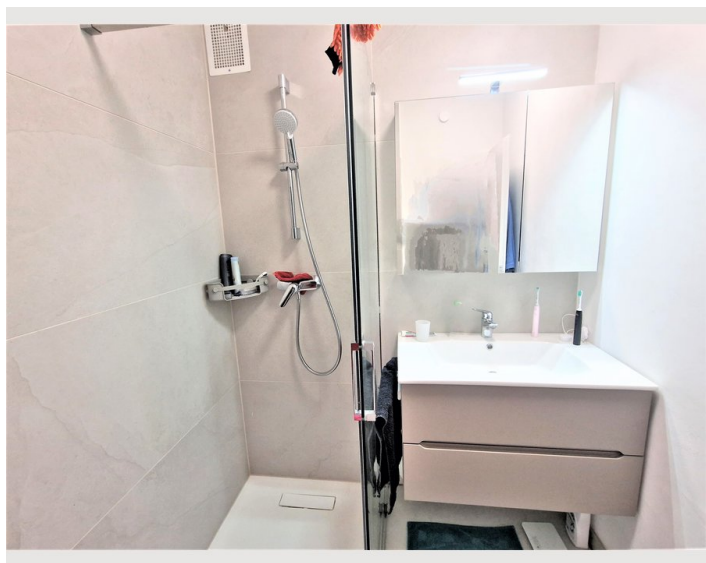
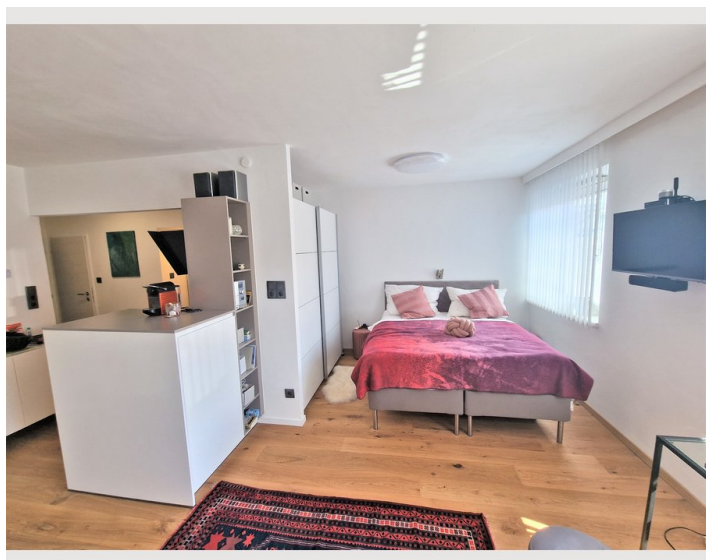
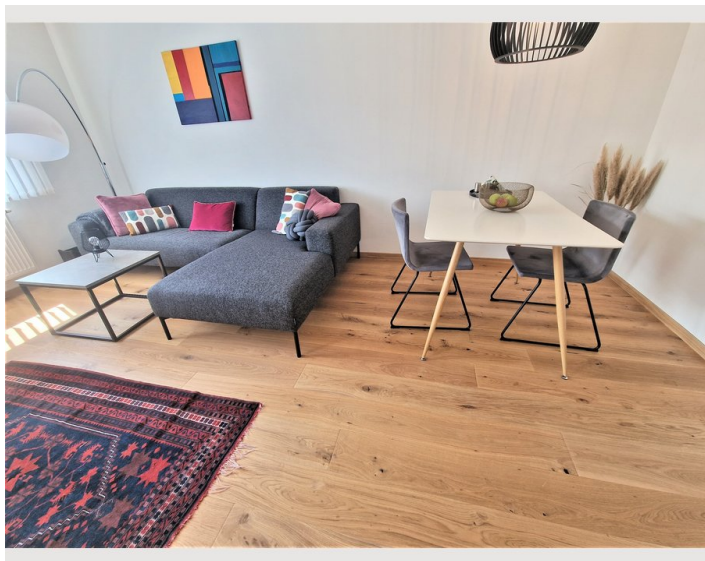
Informations

- Smoking not allowed
- Desk/Workplace
- Pets forbidden
- Bicycle room free of charge
- Short-term parking zone subject to a charge
- Private entrance
- Regular cleaning at extra cost

Additional services

All prices are gross per month - billing is done directly with the lessor.

Picture gallery



Infrastructure



Railwaystation Rennweg 3 minutes away



Central-railwaystation (Wiener Hauptbahnhof) 8 Minutes away



Airport Wien-Schwechat 20 minutes away



grocery store and bakery 2 minutes away

Accessibility by public transport:

Vienna city - 8 min.,

Center Wien-Mitte - 6 min

Vienna Central Station (Hauptbahnhof) - 8 min. and the

Airport Vienna-Schwechat - 20 min.

Accessibility by car:

City motorway Southeast Tangente 2 km

Location

