



HOUSE, 6020 INNSBRUCK

The miracle of wood. Wooden house. Living on time.

Object number: FLOU4

[View and rent online](#)

Period	14/12/2025 - 14/01/2026
Number of persons	2
Total incl. VAT.	€ 6.701,30
Security deposit	€ 5.000,00

The miracle of wood. Wooden house. Living on time.



Living space

98m²



Maximum occupancy

10 Persons



Complete accommodation [?]

2 Private bathrooms 4 Separated bedrooms 1 Living-Sleepingroom



3. floor



Check-in

16:00 - 18:00 Clock



Check-out

08:00 - 10:00 Clock

Sleeping options

Bedroom 1



1x Double bed (1,40 m x 2 m)

Bedroom 2



1x Double bed (1,40 m x 2 m)

Bedroom 3



1x Double bed (1,40 m x 2 m)

Bedroom 4



1x Double bed (1,40 m x 2 m)

Living and sleeping



1x Sofa bed (2 persons)

Descripton of accommodation

<p>For the sake of the environment and for body, mind and soul, we have built this house. Sustainability is written here in capital letters. The wooden house is built with moon wood. Felled at certain moon times, it is first stored/dried. Then the spruce wood is doweled with beech wood dowels. Outside the wood is protected and inside the massive wooden walls are visible. The healing power, the grounding, the gentle medicine of the wood comes to experience here. </p>

Equipment & Features



Basic equipment

- Terrace
 - Bedclothes
 - Private toilet
 - Internet/Wifi
 - Towels
 - Parking space
-



First supply

- Toilet paper
 - Soap
 - shampoo
-



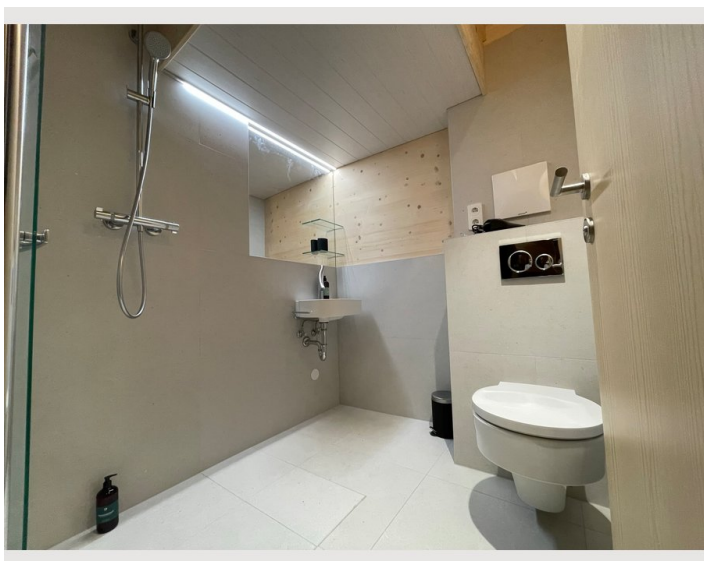
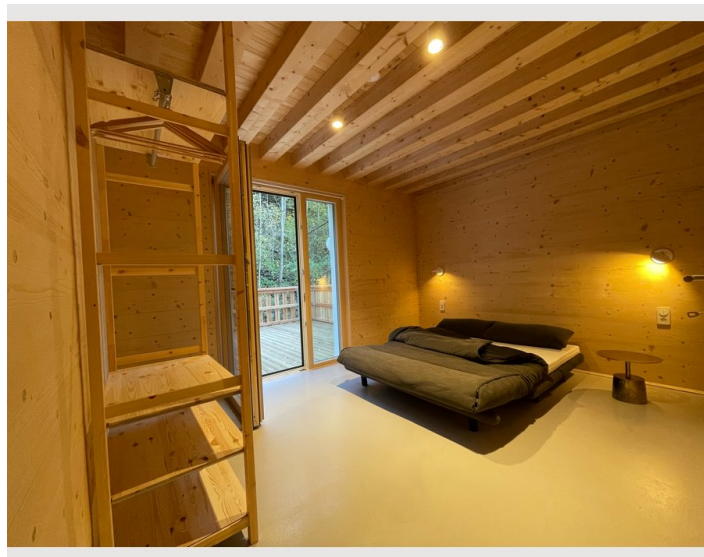
Kitchen

- Private kitchen
- Filter coffee

Informations


- Suitable for children
- Pets on request
- Bicycle room free of charge
- Smoking not allowed
- Regular cleaning at extra cost

Picture gallery



Infrastructure

 ~ 4km away

 ~ 800m away

 ~ 1,5 km away

The accommodation is located in an area with excellent infrastructure, characterized by its excellent access to public transport, a variety of shopping facilities, restaurants, cafes, schools, kindergartens, medical facilities, sports facilities and cultural attractions such as museums and theaters. The favorable transport location also facilitates the accessibility of the surrounding towns.

Location

