



2 ROOM APARTMENT, 4600 WELS

apartement in heart of city

Object number: KIRW2

[View and rent online](#)

the appartement is really high quality and kitchen fully equipped.

| | |
|--------------------------|---------------------|
| Period | 27/04/ - 27/05/2026 |
| Number of persons | 2 |
| Total incl. VAT. | € 1.776,06 |
| Security deposit | € 1.400,00 |

**Living space**48m²**Maximum occupancy**

2 Persons

**Complete accommodation** 

1 Private bathroom 1 Separated bedroom 1 Living-Sleepingroom

**2. floor**

Elevator available

**Check-in**

14:00 - 19:00 Clock

**Check-out**

07:00 - 11:00 Clock

Sleeping options**Sleeping room**

1x Double bed (1,80 m x 2 m)

Living & Sleeping

1x Sofa bed (1 person)

Descripton of accommodation

the living room with fully equipped kitchen and eating table. A comfortable couch and flat TV. Bathroom with tube and small washing machine. The sleeping room comes with boxspringbed, walking in wardrobe and working table

Equipment & Features



Basic equipment

- Internet/Wifi
- Private washing machine
- Towels
- Vacuum cleaner
- Cleaning utensils
- TV
- Bedclothes
- Private toilet
- Iron & ironing board
- Hairdryer



First supply

- Toilet paper
- Soap
- Fridge filling on request
- shampoo
- Nespresso capsules



Kitchen

- Private kitchen
- Glasses/Tableware
- Filter coffee
- Microwave
- Cooking utensils
- Espresso machine
- Dishwasher

Informations

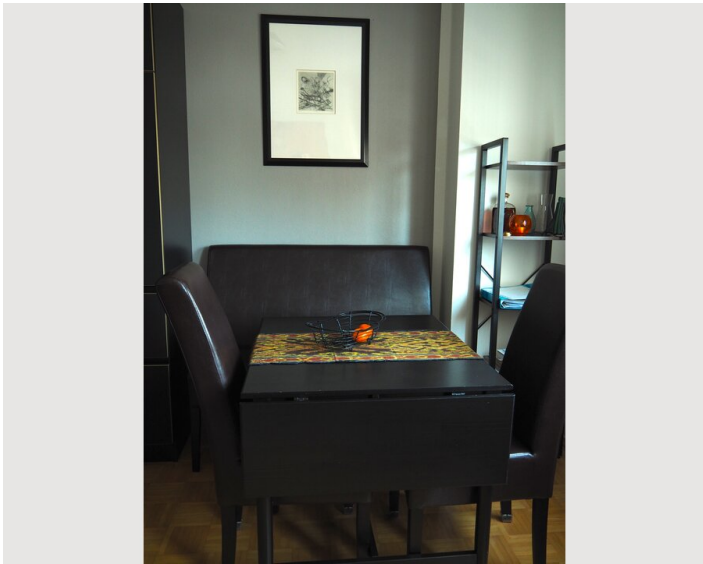
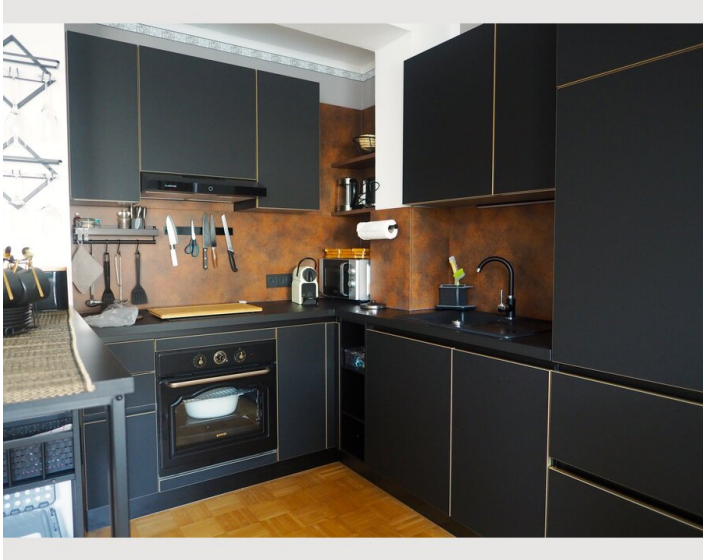
- Suitable for construction workers
- Smoking not allowed
- Short-term parking zone subject to a charge
- Private entrance
- Regular cleaning at extra cost
- Suitable for children
- Free short-term parking zone
- Desk/Workplace
- Pets forbidden
- Bicycle room free of charge

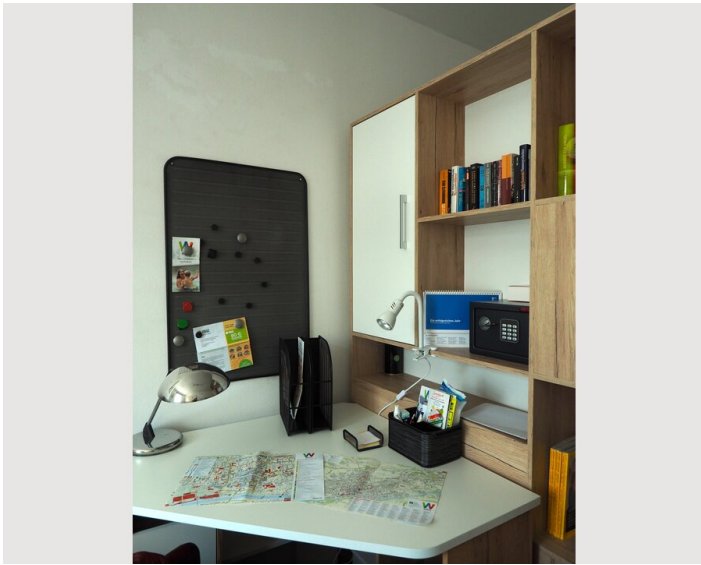
Additional services

- 1 cleaning per month (€ 75,00)


All prices are gross per month - billing is done directly with the lessor.

Picture gallery







Infrastructure

 across the street

 30min driving distance

 15 min walking

 in citycenter

 200m

All shopping facilities in the city center. Cycling at Traun river 200m possible. To highway 10 min driving

Location

