

2 ROOM APARTMENT, 1200 VIENNA

Nice apartment for Teo with garden view

Object number: PITM4

[View and rent online](#)

Welcome to our cozy apartment with a garden view, perfect for couples or solo travelers looking for a quiet yet centrally located accommodation.

| | |
|--------------------------|----------------------------|
| Period | 18/12/2025 - 18/01/2026 |
| Number of persons | 2 |
| Total incl. VAT. | € 2.512,90 |
| Security deposit | € 1.800,00 |



Living space

40m²



Maximum occupancy

2 Persons



Complete accommodation [?]

1 Private bathroom 1 Separated bedroom



Ground floor



Check-in

16:00 - 19:00 Clock



Check-out

08:00 - 10:00 Clock

Sleeping options

Sleeping room



1x Double bed (1,60 m x 2 m)

Description of accommodation

Featuring a comfortable double bed, a modern bathroom, a well-equipped kitchen, and complimentary WiFi, the apartment has everything you need for a pleasant stay in Vienna. A special highlight is the excellent value for money, as well as the private garden in the middle of the city. We look forward to hosting you!

Equipment & Features



Basic equipment

- Garden sharing
- Music system/docking station
- Community washing machine
- Bedclothes
- Private toilet
- Cleaning utensils
- Internet/Wifi
- TV
- Community dryer
- Towels
- Vacuum cleaner
- Hairdryer



First supply

- Toilet paper
- Soap
- shampoo
- Nespresso capsules



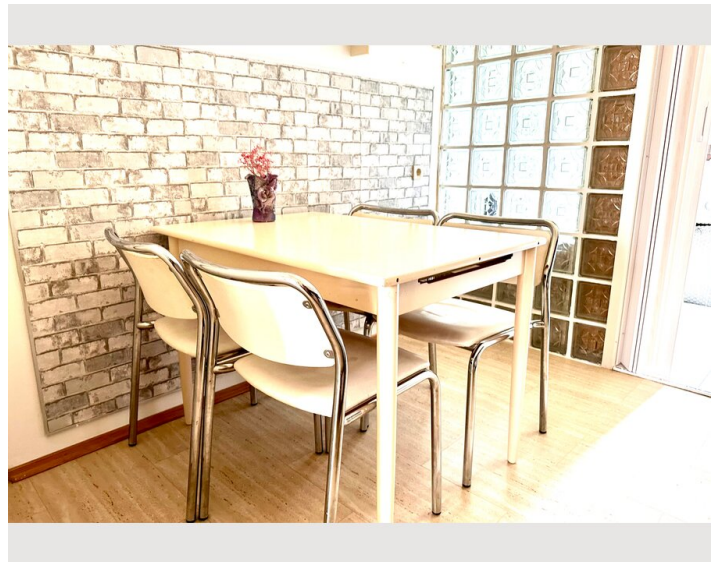
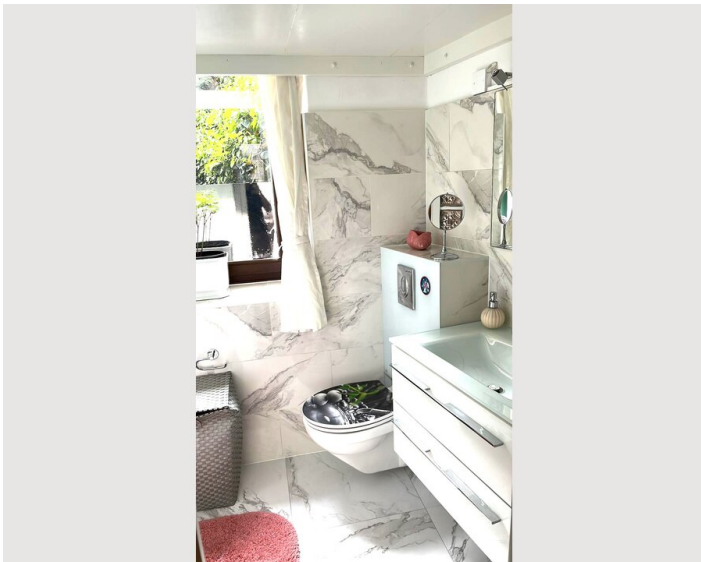
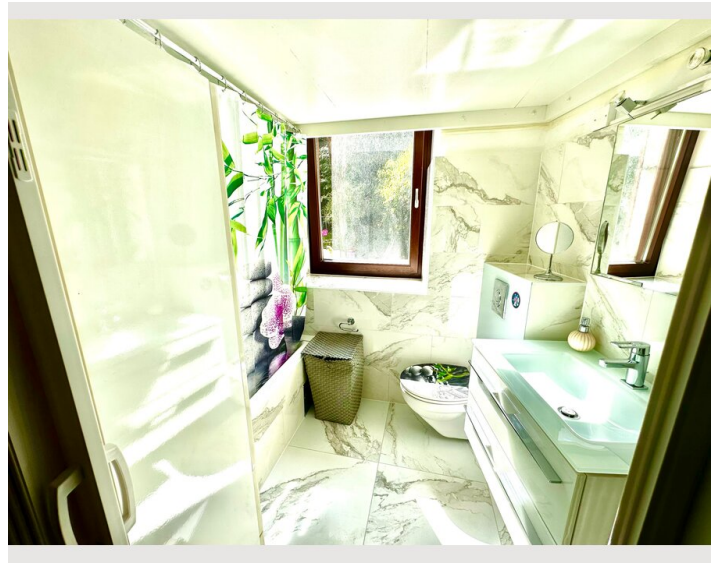
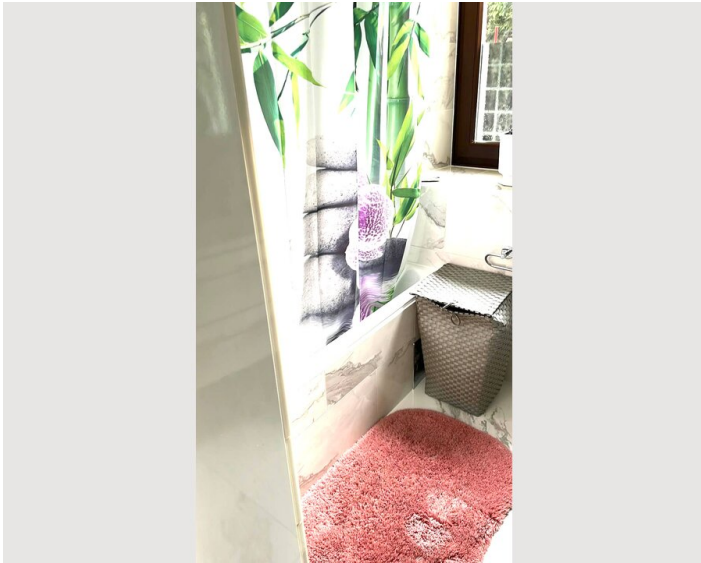
Kitchen

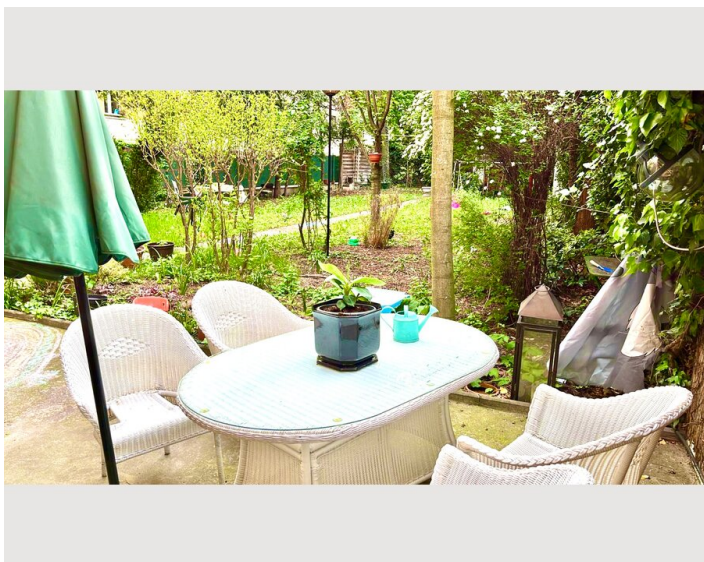
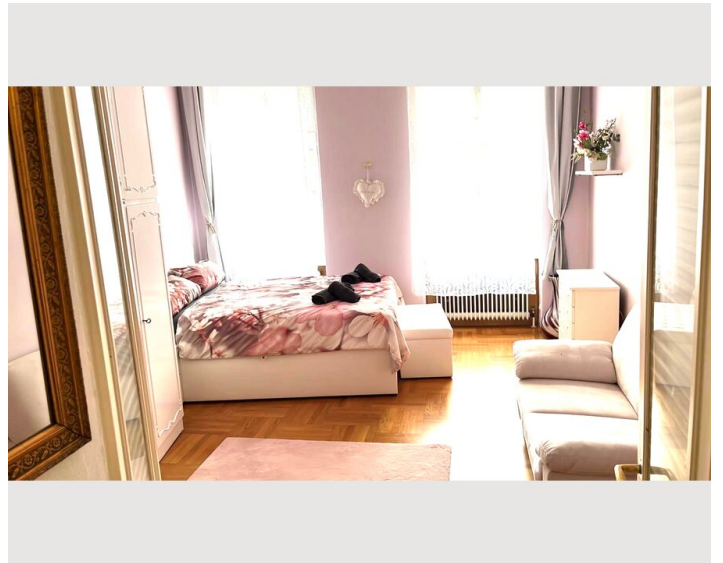
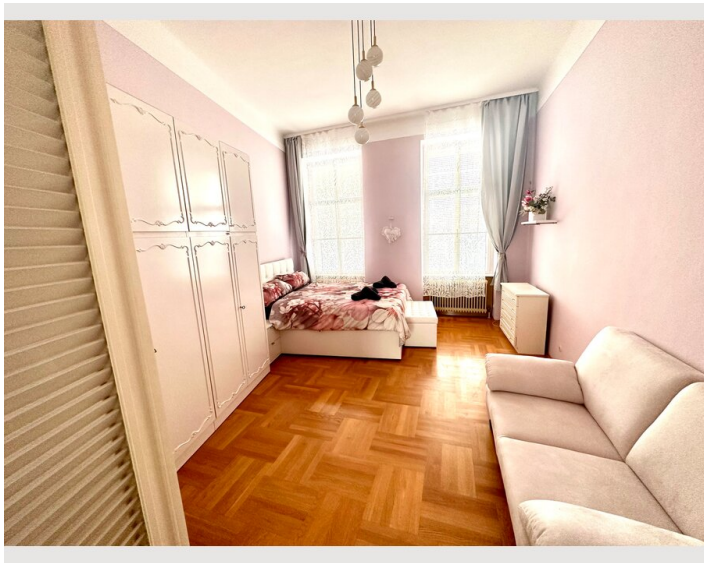
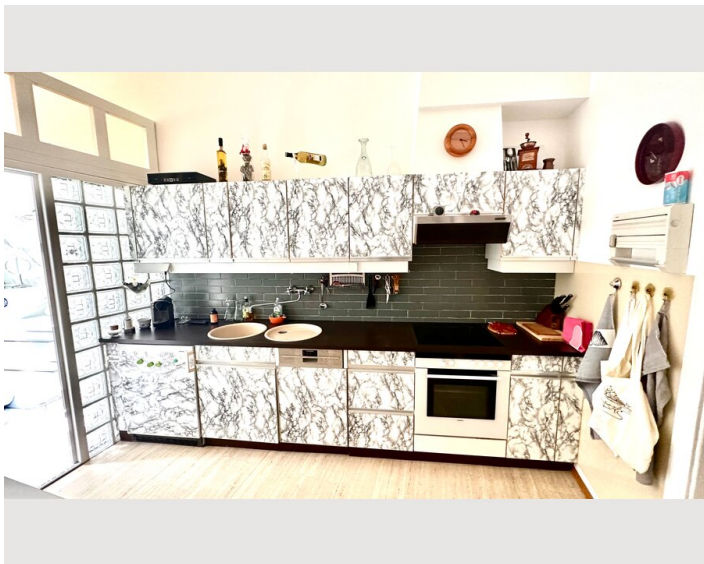
- Private kitchen
- Glasses/Tableware
- Dishwasher
- Cooking utensils
- Espresso machine
- Microwave

Informations

- Suitable for construction workers
- Desk/Workplace
- Pets on request
- Suitable for children
- Private entrance

Picture gallery





Infrastructure

🕒 You can reach the City Center quickly

The apartment is situated in a tranquil location, providing an ideal starting point for exploring the neighborhood with a stroll through the Augarten. The historic city center is only 3 km away and easily accessible by tram and subway. The recreational areas of Donaukanal, Donauinsel, and Wiener Prater are also within a short distance. All the necessary shops for daily needs are just around the corner. Additionally, a typical Viennese restaurant, known for serving one of the best Wiener Schnitzels, is located next door.

Location

