



3 ROOM APARTMENT, 5020 SALZBURG

## City apartment

Object number: MART2

[View and rent online](#)

The city apartment is just a few steps from the oldtown of Salzburg (15-20 min. 1,5 km) away and has about 65 qm living space and a 14 qm terrace.

<b>Period</b>	06/04/ - 06/05/2026
<b>Number of persons</b>	2
<b>Total incl. VAT.</b>	€ 2.074,34
Security deposit	€ 1.500,00

**Living space**63m<sup>2</sup>**Maximum occupancy**

2 Persons

**Complete accommodation** 

1 Private bathroom 1 Separated bedroom

**2. floor**

Elevator available

**Check-in**

00:00 - 23:00 Clock

**Check-out**

00:00 - 23:00 Clock

**Sleeping options****Sleeping room**

1x Double bed (1,80 m x 2 m)



1x Sofa bed (2 persons)

**Description of accommodation**

The apartment is located in a new Building (built in 2016) and has an own multiparker-parking space, allowed for cars under 2 tons. The living room has about 26 qm with kitchen and an entrance to the terrace. The sleeping room has about 18 qm, and there is a bathroom with washing mashine, a seperately toilet and a walk-in closet.

## Equipment & Features



### Basic equipment

- Terrace
- TV
- Bedclothes
- Private toilet
- Garage
- Iron & ironing board
- Hairdryer
- Internet/Wifi
- Private washing machine
- Towels
- Private parking space
- Vacuum cleaner
- Cleaning utensils



### Fireplace

- Grill



### First supply

- Toilet paper
- Soap



### Kitchen

- Private kitchen
- Cooking utensils
- Espresso machine
- Kitchenette
- Glasses/Tableware
- Dishwasher

## Informations

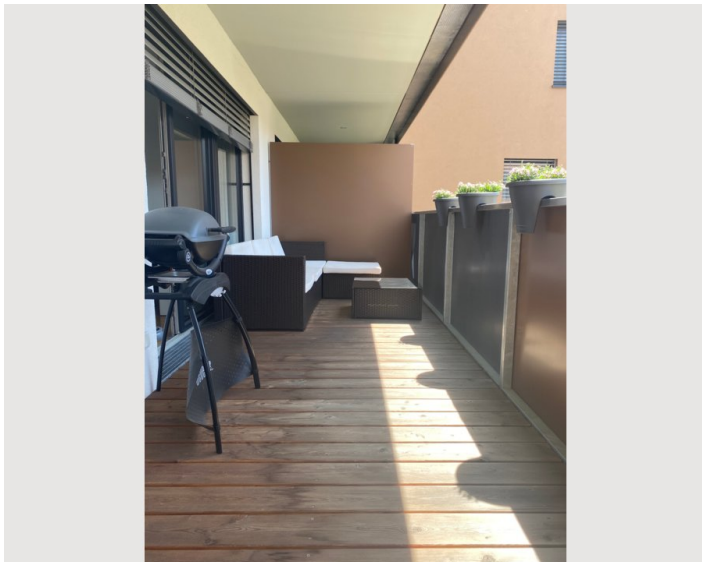
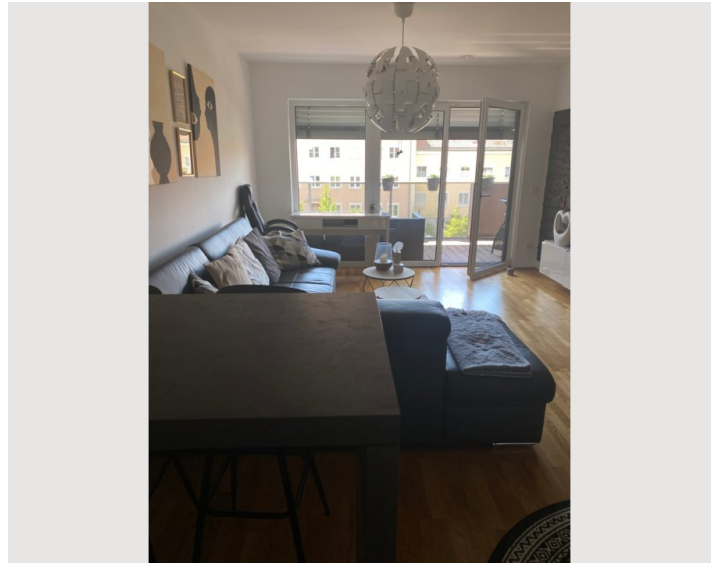
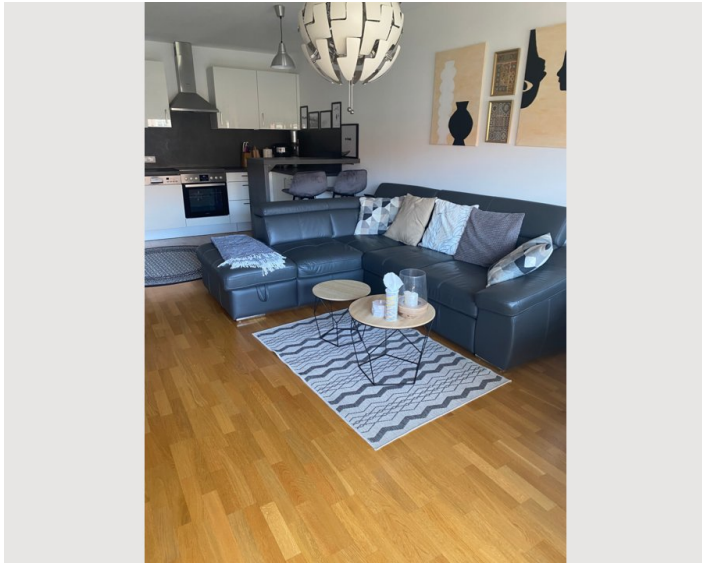
- Suitable for children
- Desk/Workplace
- Bicycle room free of charge
- Smoking not allowed
- Pets forbidden

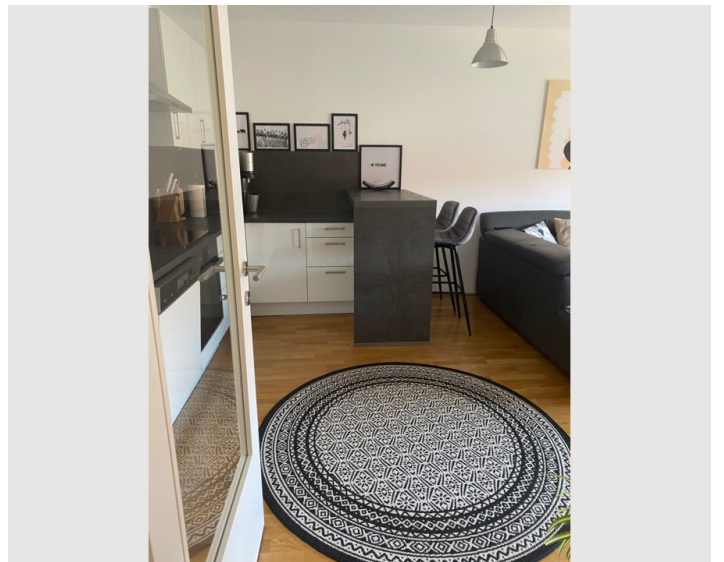
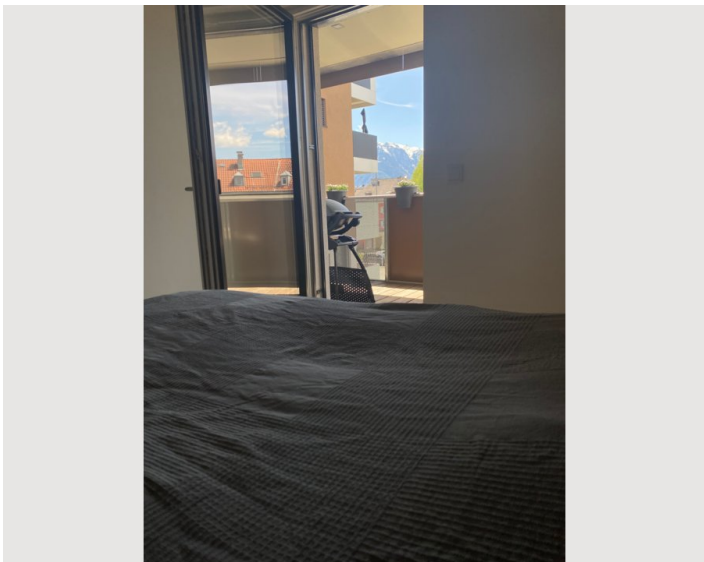
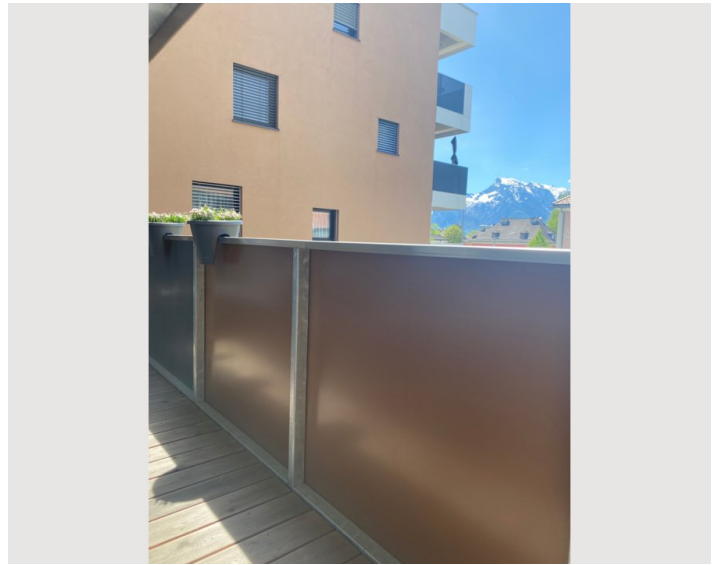
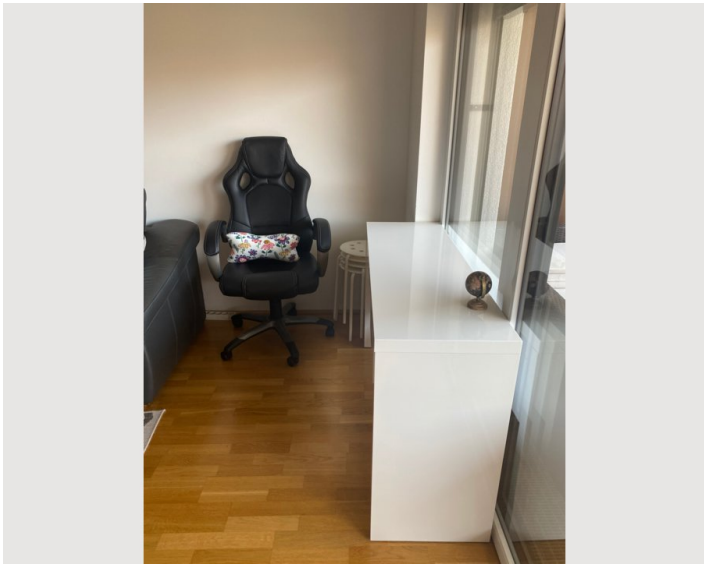
## Additional services

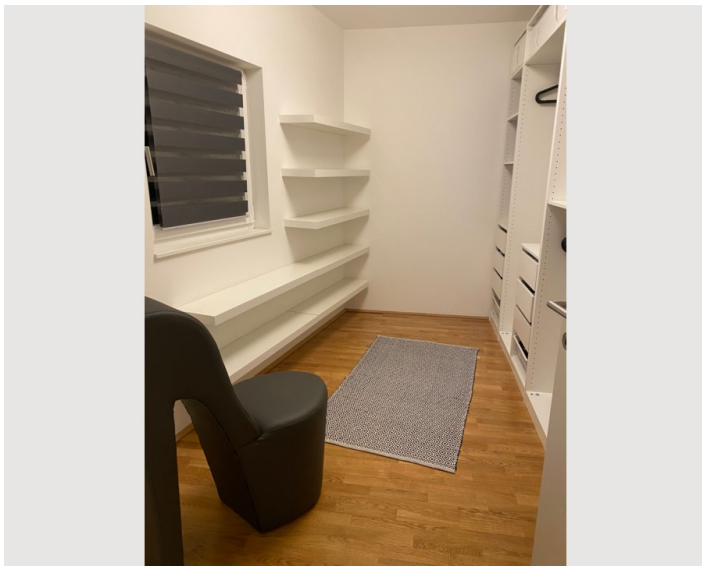
- underground parking (€ 100,00)

All prices are gross per month - billing is done directly with the lessor.


## Picture gallery










### Infrastructure

 in front of the main entrance

 in front of the main entrance

 1,5 km

 4 km

 2 km

---

The infrastructure is amazing, there is a bus stop in front of the main entrance, with a direct connection to the airport, railway station and the center. There are many supermarkets, pharmacies and gas stations in the near.

## Location

