



STUDIO APARTMENT, 1150 VIENNA

Cozy&Artsy, comfortable viennese Studio near metro

Object number: FVJE1

[View and rent online](#)

Period	29/07/ - 29/08/2025
Number of persons	2
Total incl. VAT.	€ 1.487,22
Security deposit	€ 1.200,00

Comfortable studio with kitchen in an artistic and cozy hotel.
Expensive mattress for a good night's sleep, Italian kitchen with all the essentials, fast wifi, lots of paintings. Very close to public transport, direct connection



Living space

36m²



Maximum occupancy

1 Person



Complete accommodation ?

1 private bathroom 1 Living-Sleepingroom



3. floor



Check-in

14:01 - 22:01 Clock



Check-out

07:30 - 11:01 Clock

Sleeping options

Living and sleeping



1x Double bed (1,80 m x 2 m)



1x Sofa bed (1 person)

Description of accommodation

Comfortable studio with kitchen in an artistic and cozy hotel.

Expensive mattress for a good sleep, Italian kitchen with all the necessities (because Italians know food :)), fast wifi, lots of paintings and more than 1000 bottles in the wine cellar. Plus me, your host !

Very close to public transport, direct connection to the train station, one change to the airport

Equipment & Features



Basic equipment

- Internet/Wifi
- Community washing machine
- Private toilet
- Vacuum cleaner
- Cleaning utensils
- TV
- Bedclothes
- Aircondition
- Iron & ironing board
- Hairdryer



First supply

- Toilet paper
- Soap
- shampoo
- Nespresso capsules



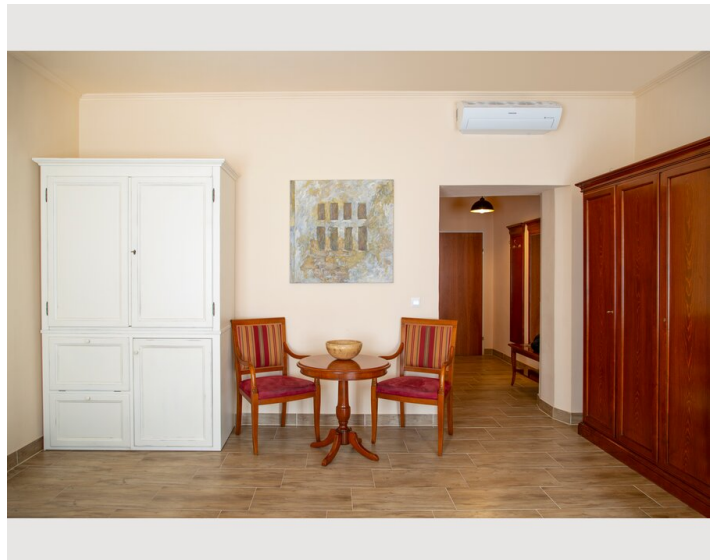
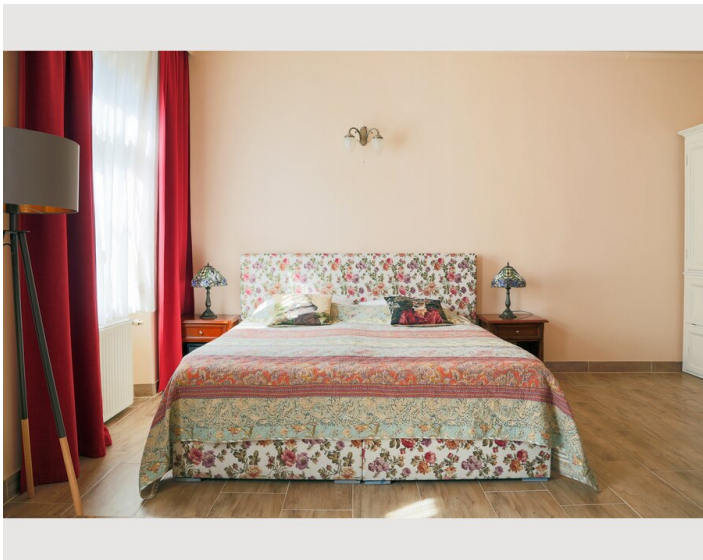
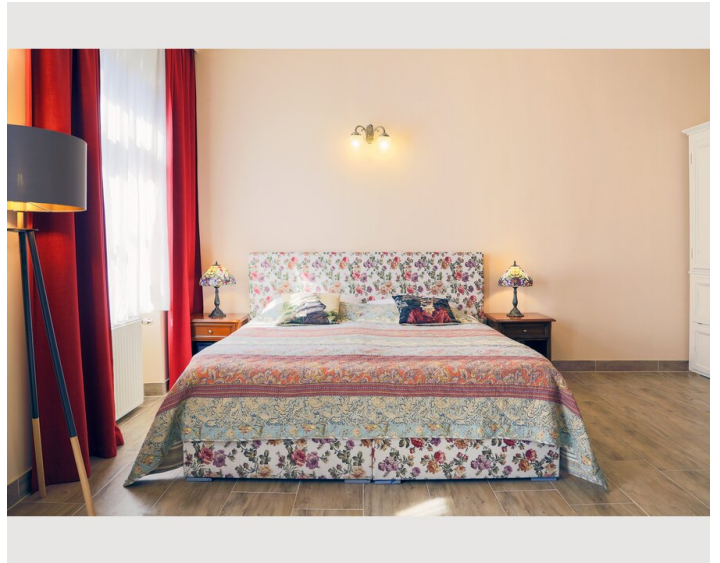
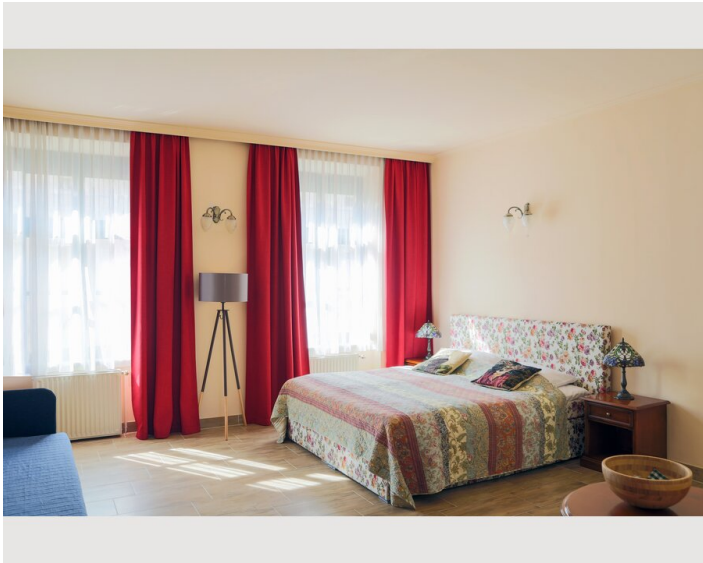
Kitchen

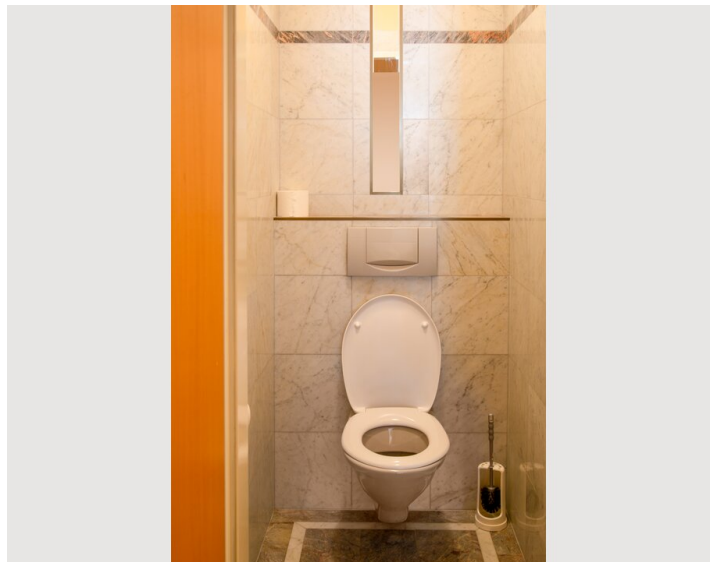
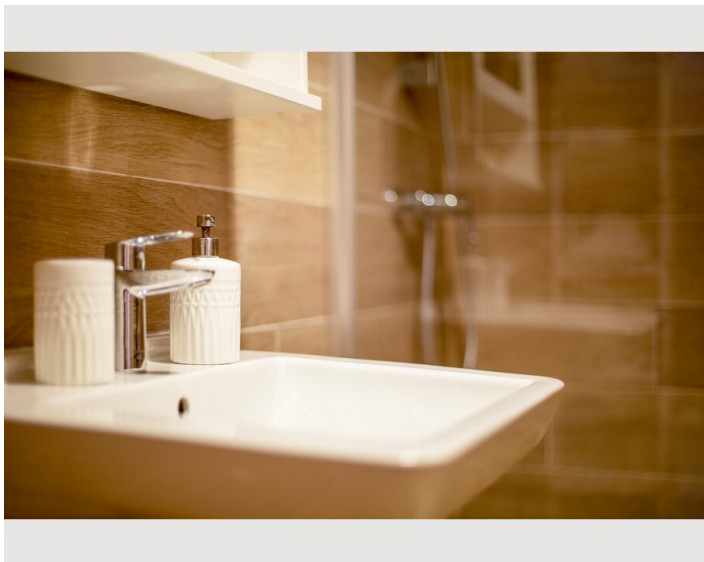
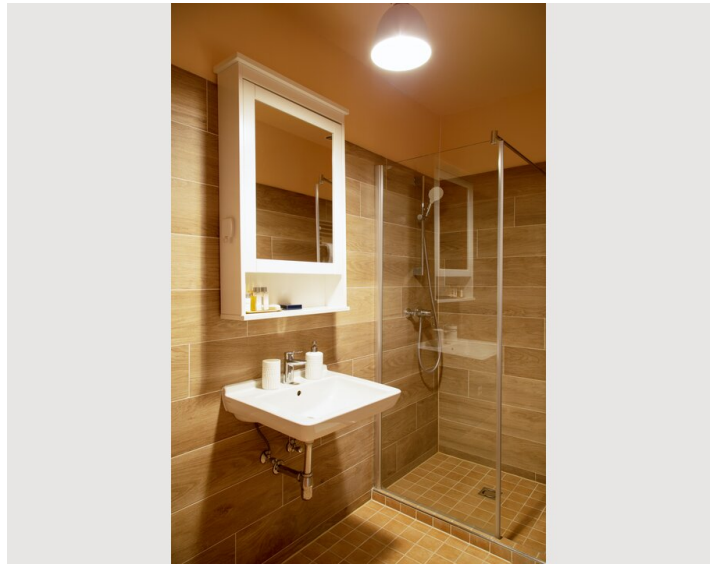
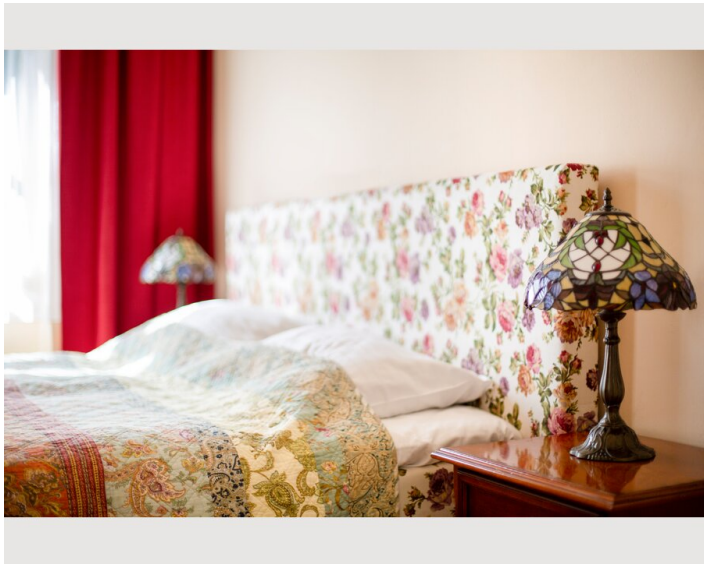
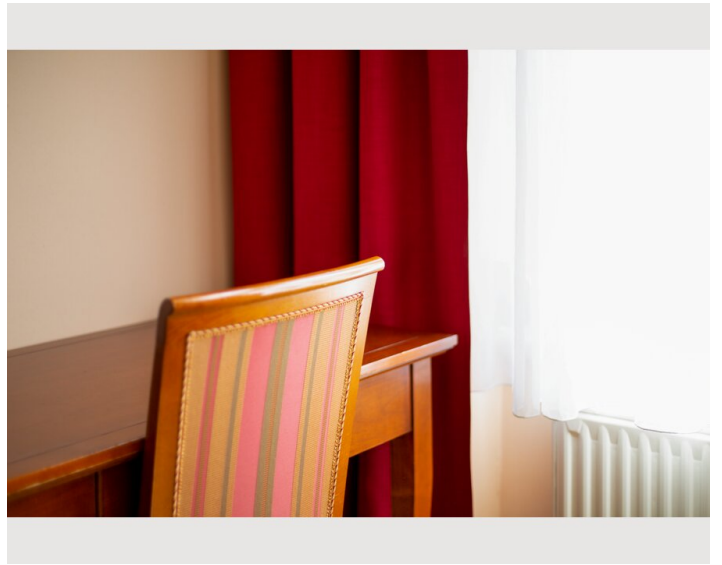
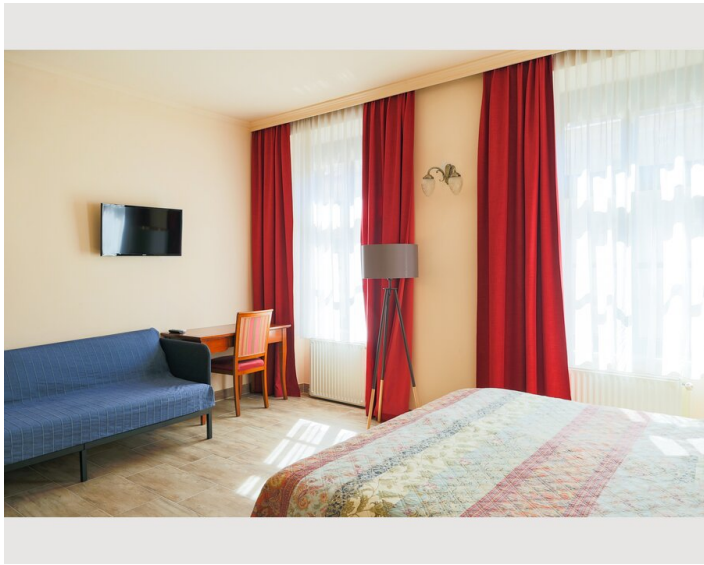
- Private kitchen
- Cooking utensils
- Espresso machine
- Kitchenette
- Glasses/Tableware
- Microwave

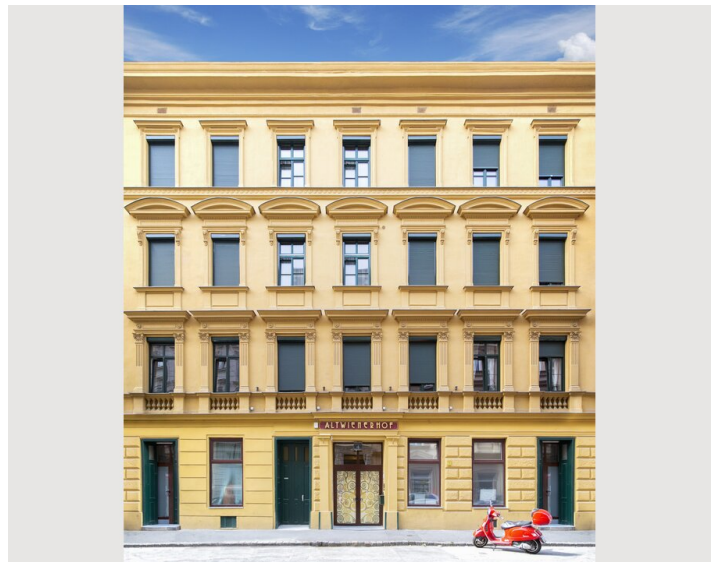
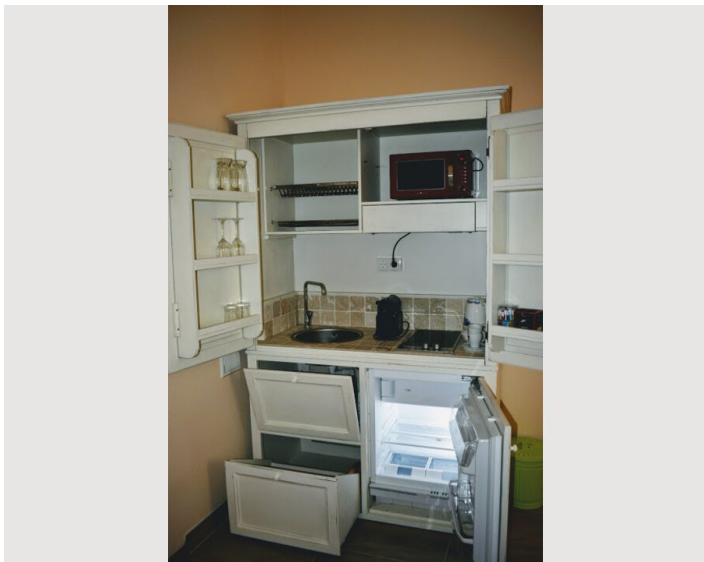
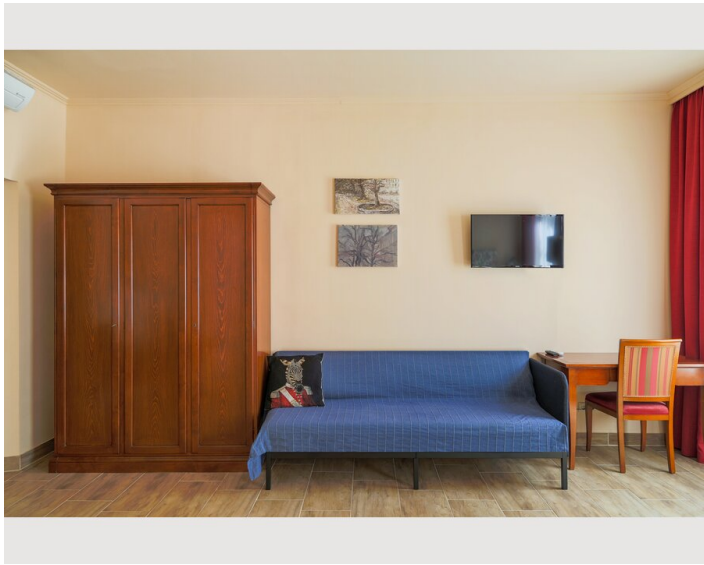
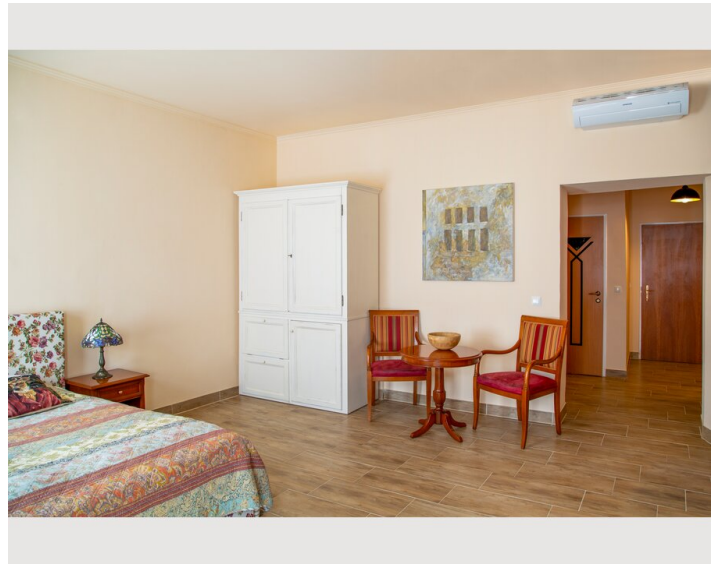
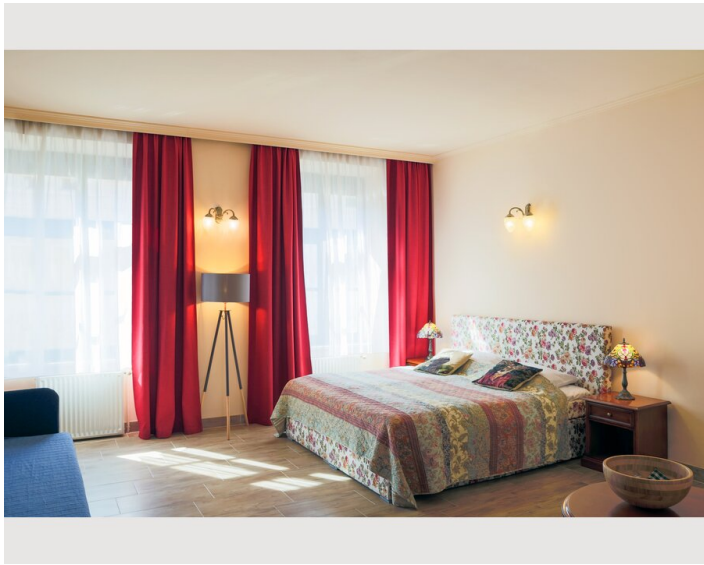
Informations

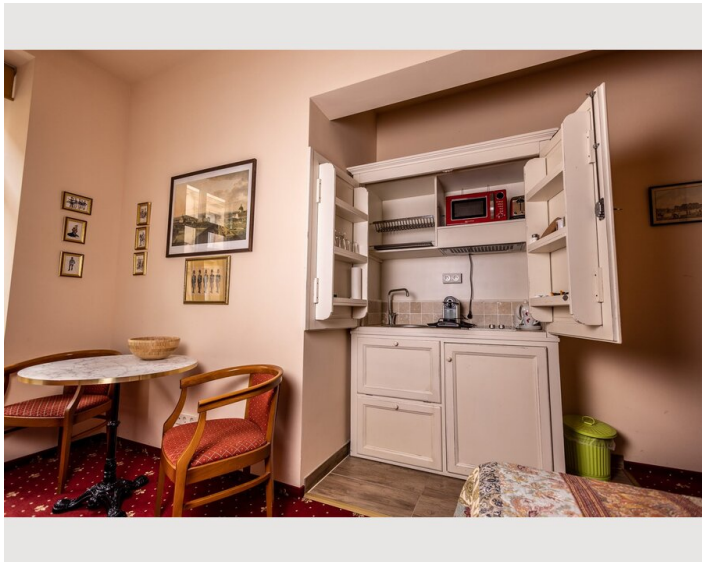
- Not suitable for children
- Desk/Workplace
- Regular cleaning at extra cost
- Smoking not allowed
- Pets on request
- Bicycle room free of charge

Picture gallery












Infrastructure

 Bus 57A, 2 minutes away

 Spar, Lidl, dm , 4 minutes away

 Metro, 2 minutes away

We are really close to a metro, bus and tramway station.

The bus: one direction to Schönbrunn Palace the other direction to Hofburg Palace (old center)

Tramway : direct connection to Main Railway Station

Metro : well, everywhere in Vienna

Spar, Lidl and dm are walking distance

Location

