



STUDIO APARTMENT, 6020 INNSBRUCK

Innsbruck Center - modern flat - directly next to center main station

Object number: MUSL2

[View and rent online](#)

Amazing high quality flat in the Center of Innsbruck in the PEMA tower. A little foyer, Sleeping-/living room with kitchen, a big wardrobe, a double bed and an armchair, bathroom and a separate toilet,

Period	09/03/ - 09/04/2026
Number of persons	2
Total incl. VAT.	€ 2.534,20
Security deposit	€ 1.600,00



Living space

36m²



Maximum occupancy

2 Persons



Complete accommodation [?]

1 Private bathroom 1 Living-Sleepingroom



5. floor

Elevator available



Check-in

14:00 - 20:00 Clock



Check-out

08:00 - 11:00 Clock

Sleeping options

Living & Sleeping



1x Double bed (1,80 m x 2 m)

Description of accommodation

modern and newly furnished

oak wood floor

full equipped kitchen

dining area

big wardrobe

Equipment & Features



Basic equipment

- Internet/Wifi
- Private washing machine
- Towels
- Vacuum cleaner
- TV
- Bedclothes
- Private toilet
- Cleaning utensils



First supply

- Toilet paper
- Nespresso capsules
- Soap
- Fridge filling on request



Kitchen

- Private kitchen
- Glasses/Tableware
- Dishwasher
- Cooking utensils
- Espresso machine
- Microwave

Informations

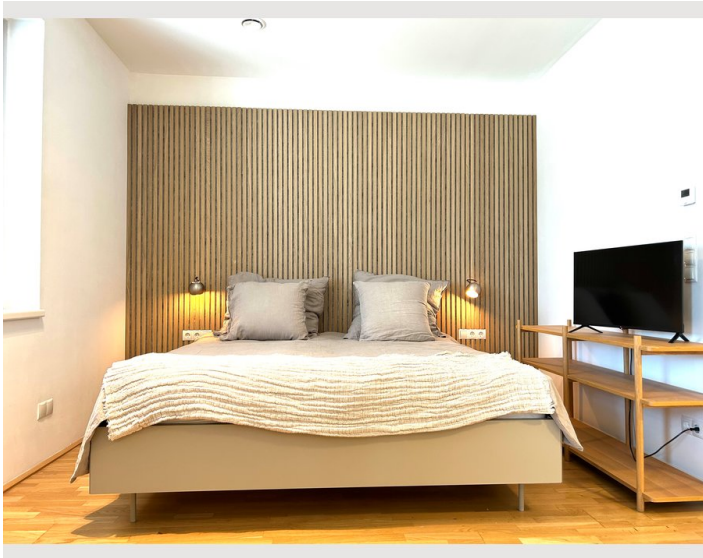
- Smoking not allowed
- Pets on request
- Regular cleaning at extra cost
- Short-term parking zone subject to a charge
- Pets allowed
- Bicycle room free of charge

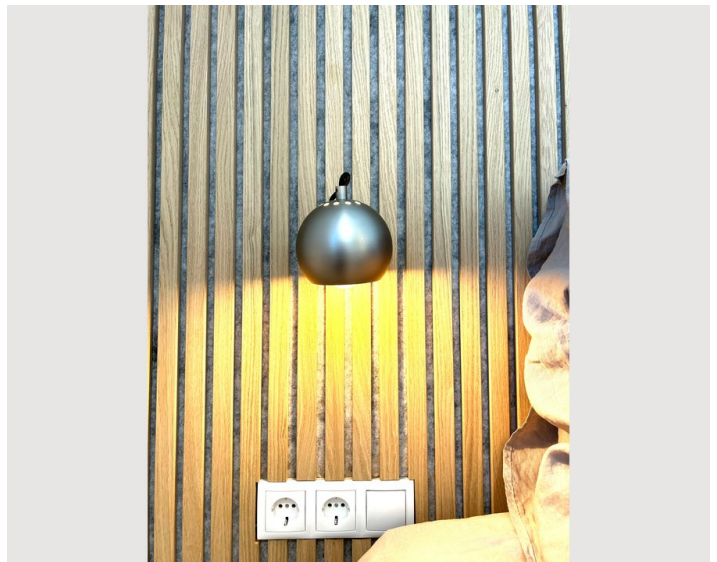
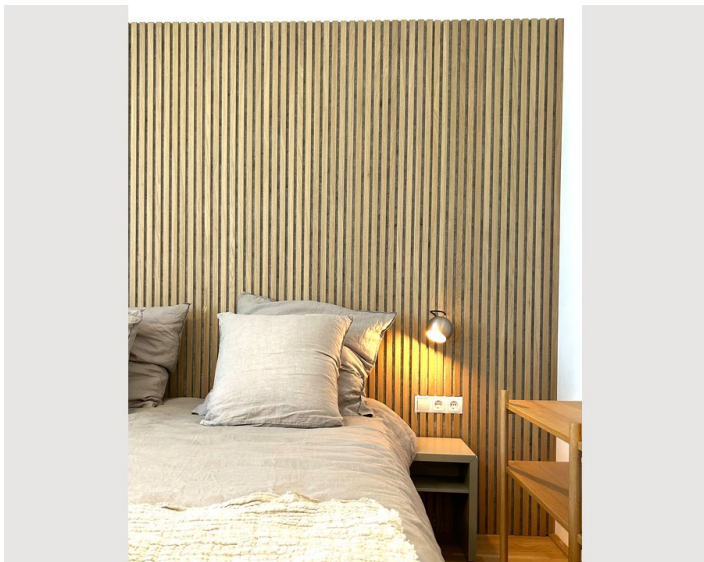
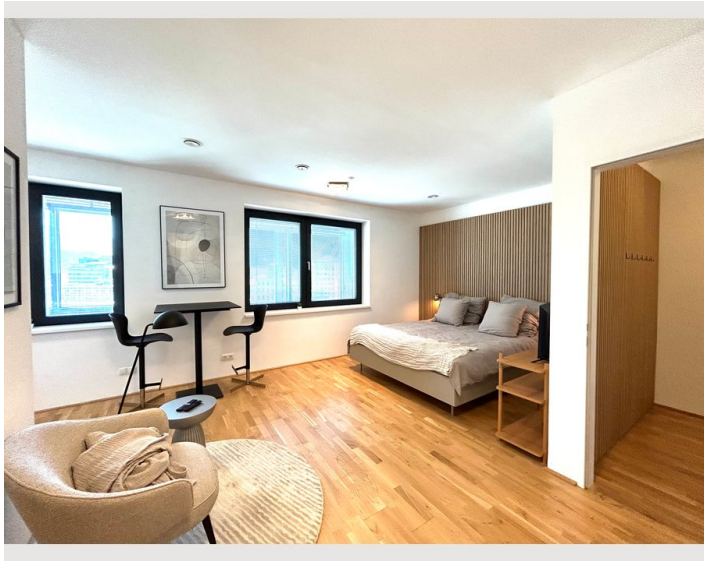
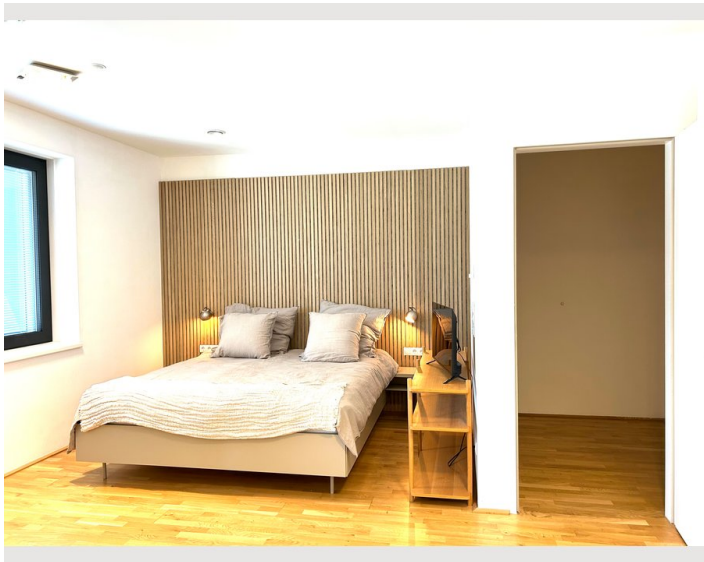
Additional services

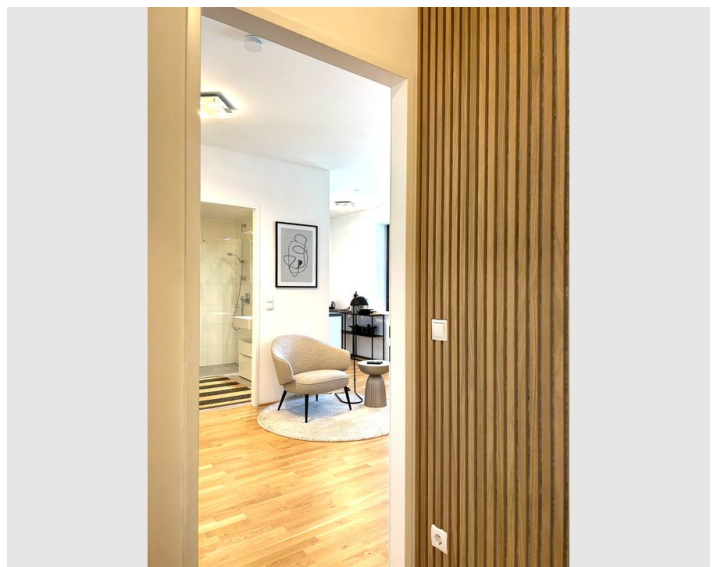
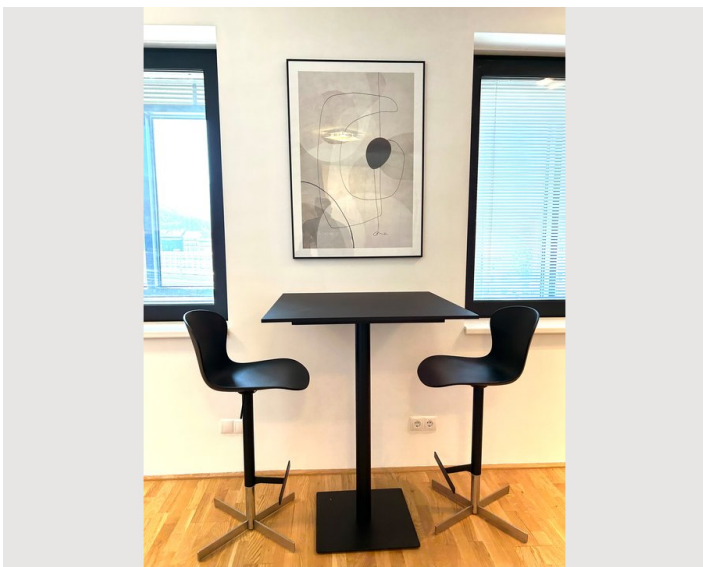
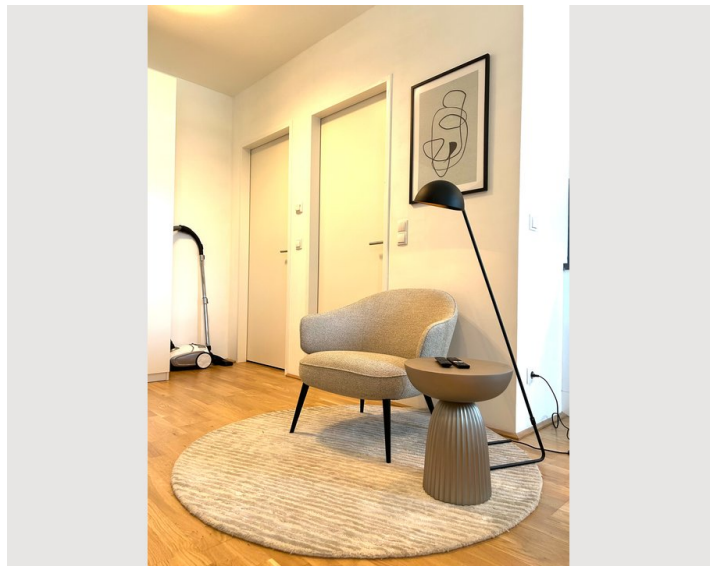
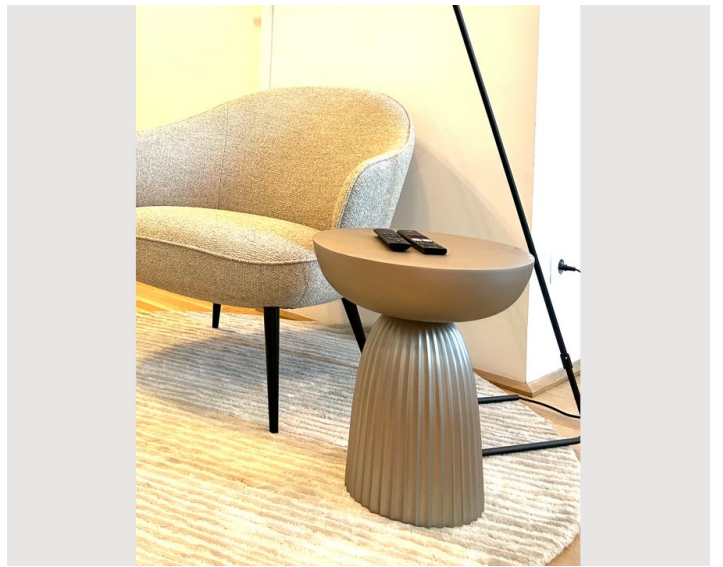
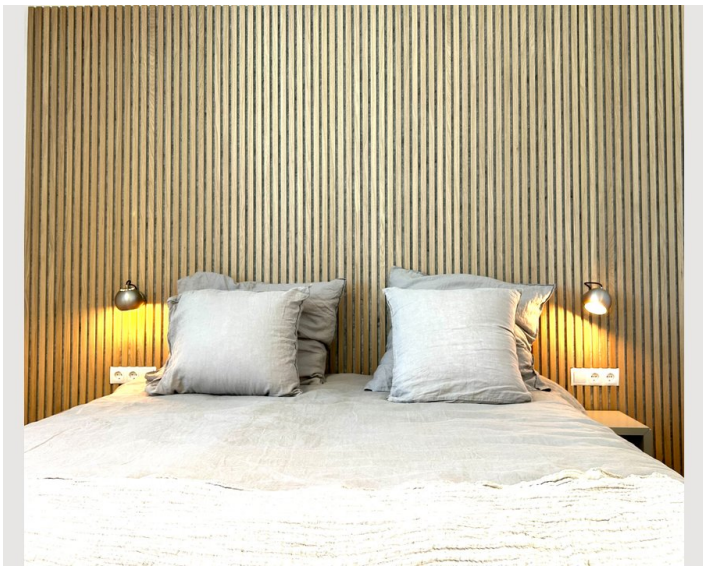
- underground parking space (€ 120,00)

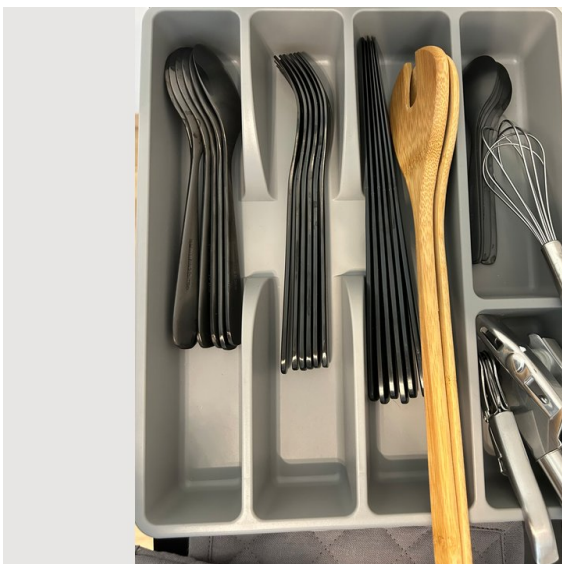
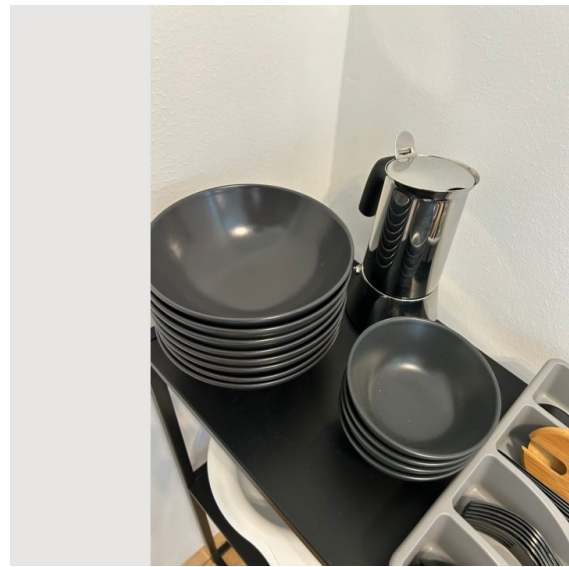
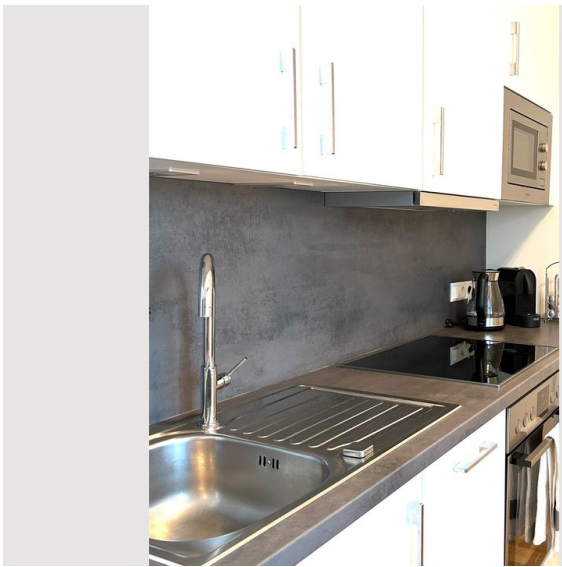
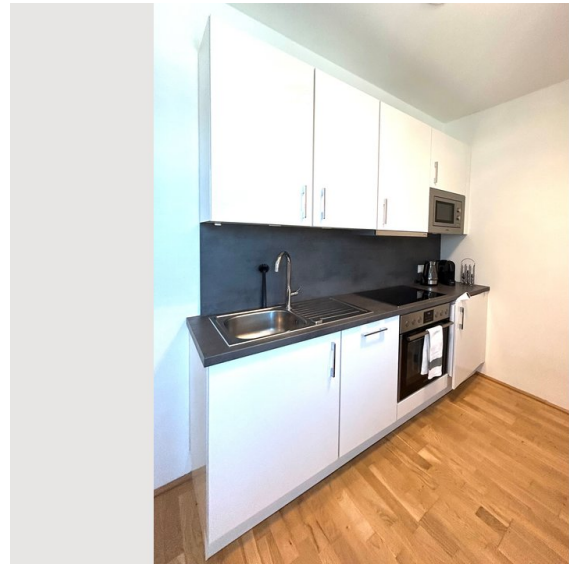
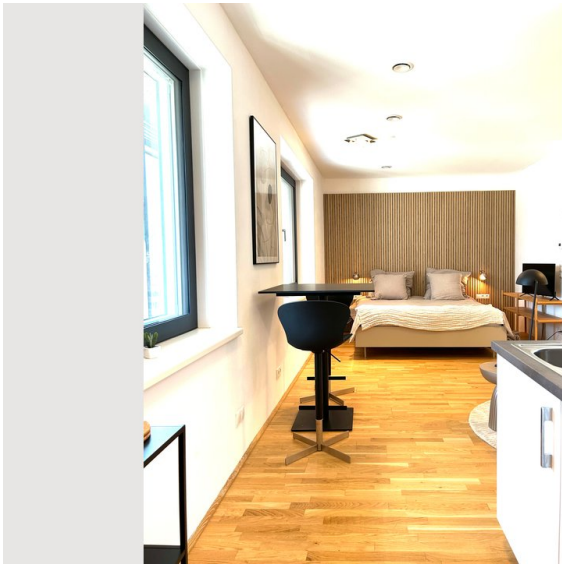
All prices are gross per month - billing is done directly with the lessor.

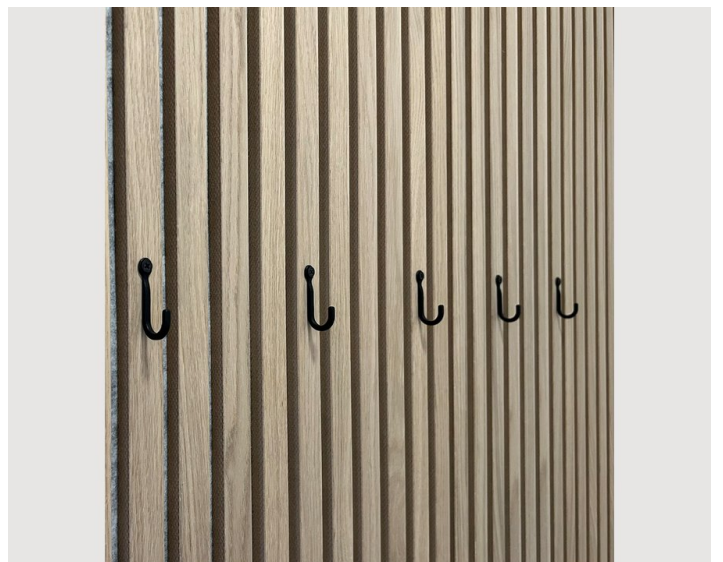
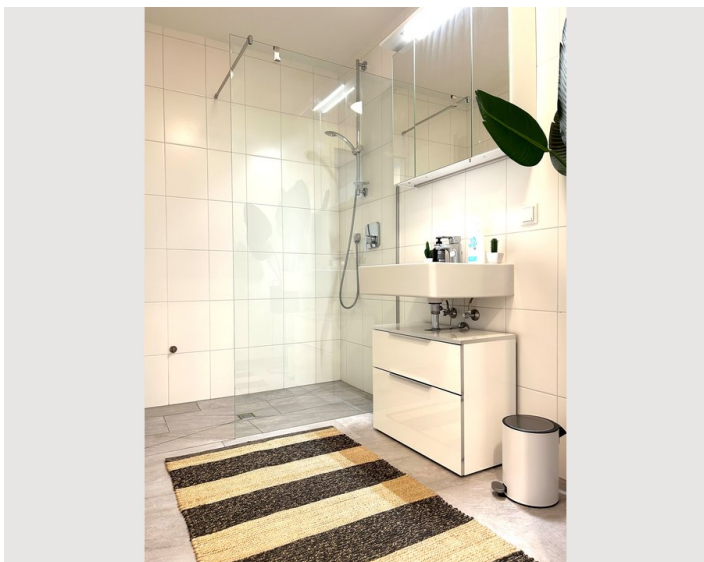
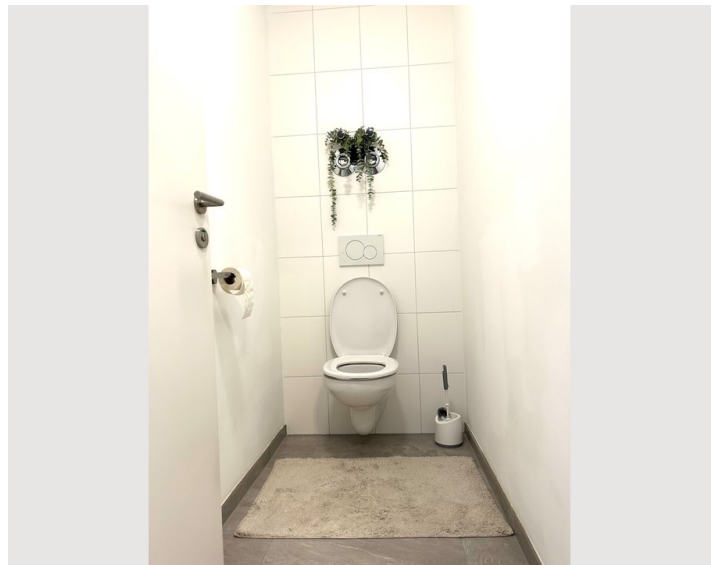
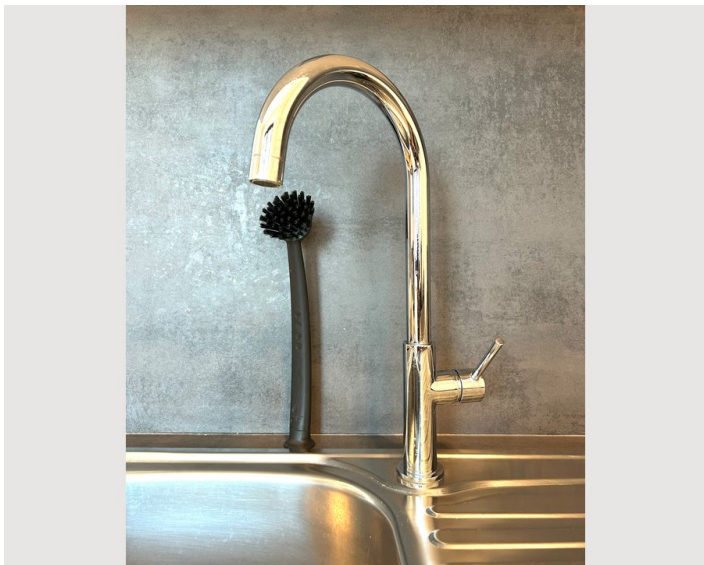
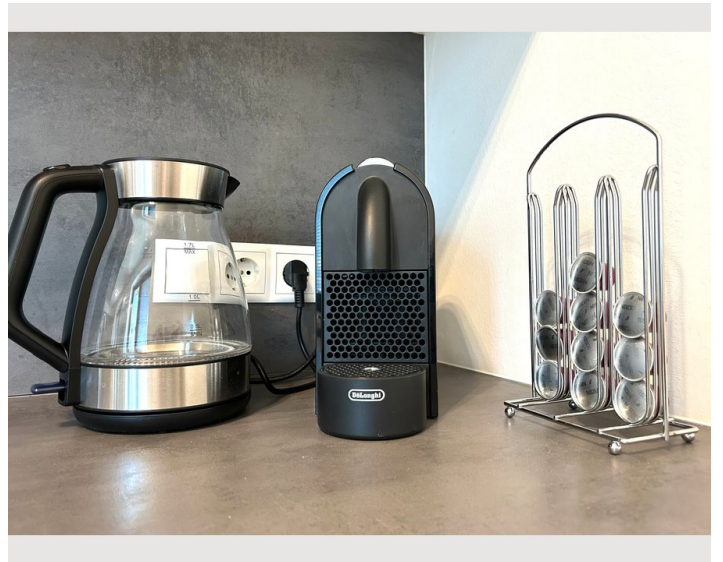
Picture gallery

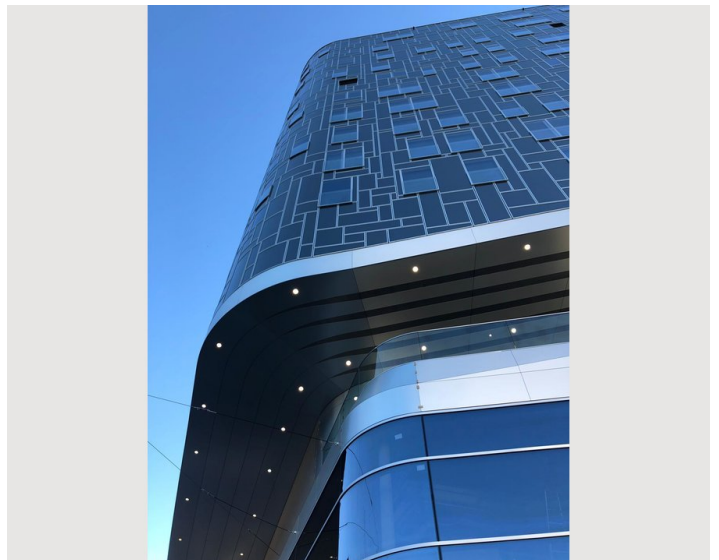
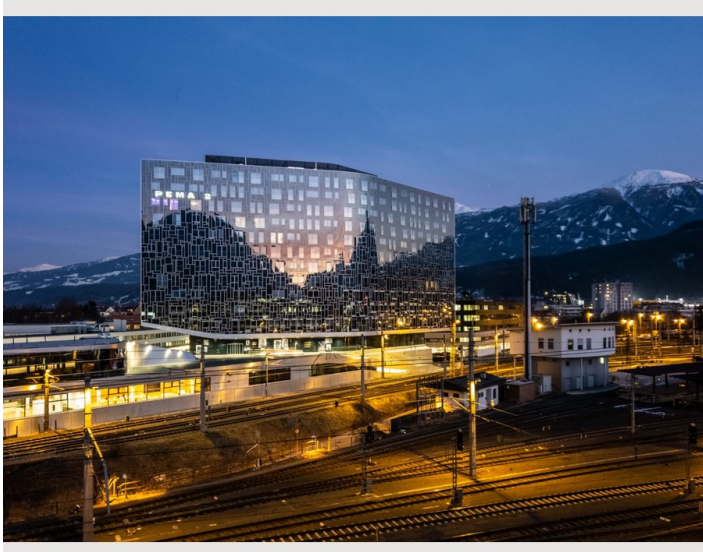


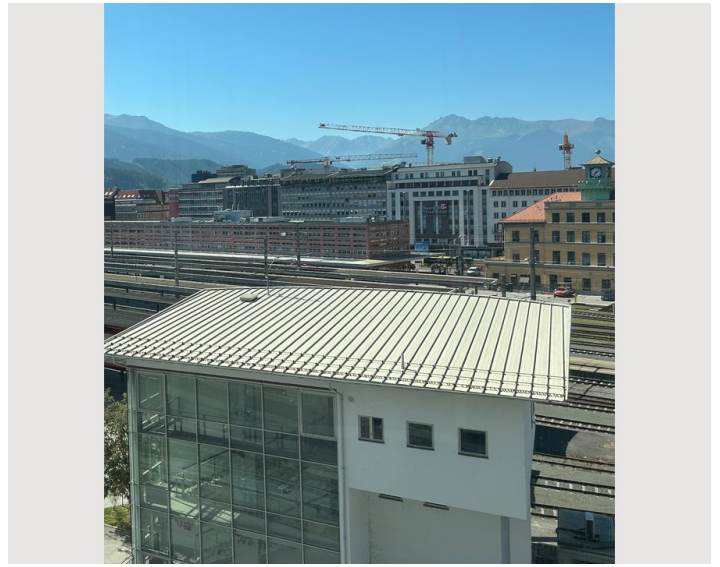
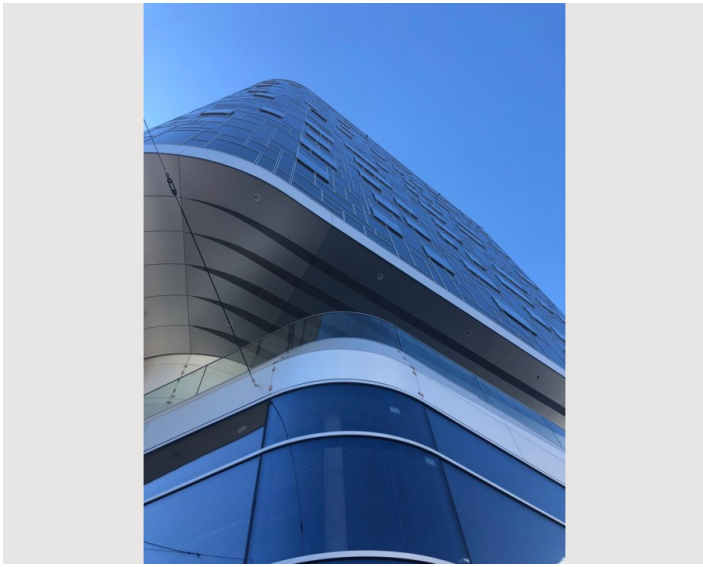













GRUNDRISS



©

Infrastructure

 Directly in the Center of Innsbruck - next to main station

Sillpark shopping center right next to it
Train station right next to it
5 minutes walk to Maria Theresienstrasse or the old town
All shops grocery stores right next to it
Best location in Innsbruck with all infrastructure
Different Restaurants within walking distance
Public swimming pool/sauna "Amraser Bad" 200 metres away
<https://www.ikb.at/baeder/hallenbad-sauna-amraser-strasse>

Location

