



2 ZIMMER WOHNUNG, 1220 VIENNA

## high-rise designer apartment with panoramic views | rooftop pool, gym, sauna + electrified parking | metro | UNO city

Object number: CYDH1

[View and rent online](#)

Enjoy the view. Let your eyes wander. Relax on the sheltered loggia. Experience wellness in the 33rd floor rooftop pool and the privately bookable sauna. Keep yourself fit in the in-house gym. Discovery entertainment @ the Donauzentrum!

<b>Period</b>	22/05/ - 22/06/2025
<b>Number of persons</b>	2
<b>Total incl. VAT.</b>	€ 2.769,43
<b>Security deposit</b>	€ 2.100,00



### Living space

55m²



### Maximum occupancy

4 Persons



### Complete accommodation <sup>?</sup>

1 private bathroom 1 Separated bedroom 1 Living-Sleepingroom



### 30. floor

Elevator available



### Check-in

15:00 - 23:59 Clock



### Check-out

06:00 - 10:30 Clock

## Sleeping options

### Sleeping room



1x Double bed (2 m x 2 m)

### Living and sleeping



1x Sofa bed (2 persons)

## Descripton of accommodation

This beautiful unit at Dr.-Adolf-Schärf-Platz 5 in 1220 Vienna is fully furnished and equipped with a variety of in-house amenities. The apartment has 55m<sup>2</sup> of floor space and enjoys a fantastic view from the 30th floor.

- Glass-fibre internet (up to 250 mbps)
- TV with many international channels
- Netflix
- Sky X

Other highlights of residential tower N° 5 include:

- 360° roof terrace with views in all directions, sun deck and outdoor pool.
- Sauna (can be booked privately), Gym and communal kitchen/youth room for residents
- Heating & cooling via the building's own geothermal station (Green Building with ÖGNI certification (Gold))

The apartment also features garage parking with an e-charging station.

## Equipment features



### Basic equipment

- Loggia
- Internet/Wifi
- Private washing machine
- Towels
- Aircondition
- Cleaning utensils
- Roof-terrace
- TV
- Bedclothes
- Private toilet
- Iron & ironing board
- Hairdryer



### Pool

- Outdoor Pool



### Wellness

- Sauna
- Fitness room



### First supply

- Toilet paper
- Soap
- Fridge filling on request
- shampoo
- Nespresso capsules



### Kitchen

- Private kitchen
- Glasses/Tableware
- Dishwasher
- Cooking utensils
- Espresso machine
- Microwave

## Informations

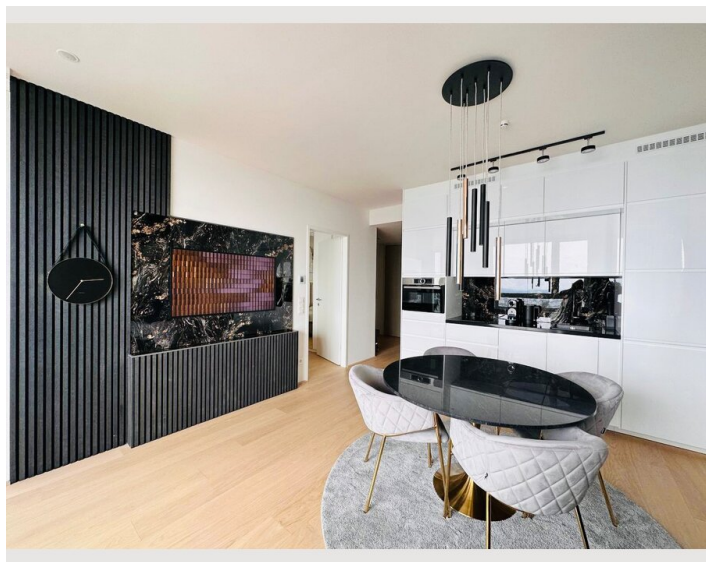
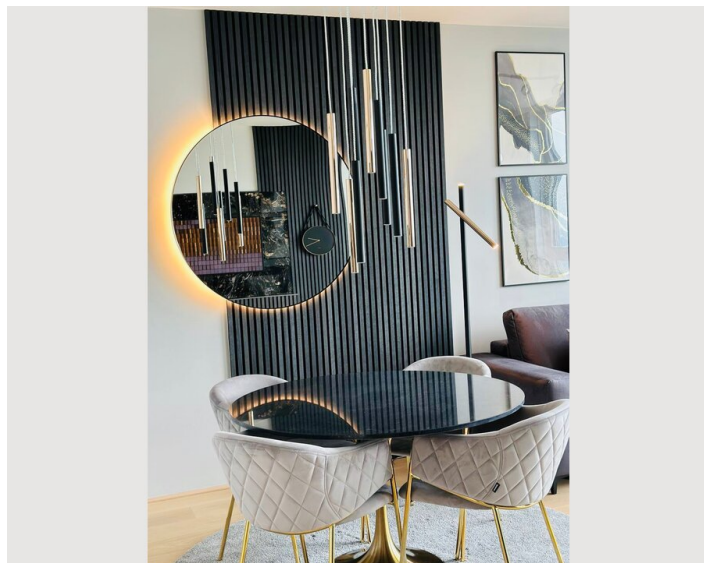
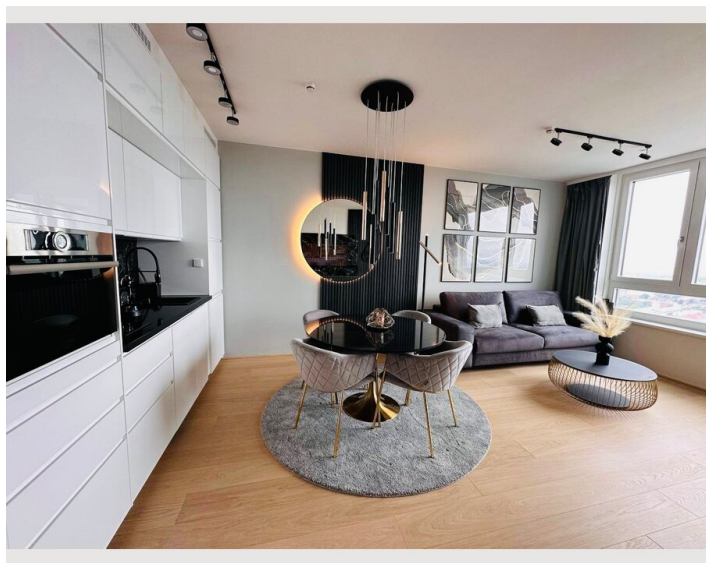
- Smoking not allowed
- Pets on request
- Bicycle room free of charge
- Desk/Workplace
- Regular cleaning at extra cost

### Additional services

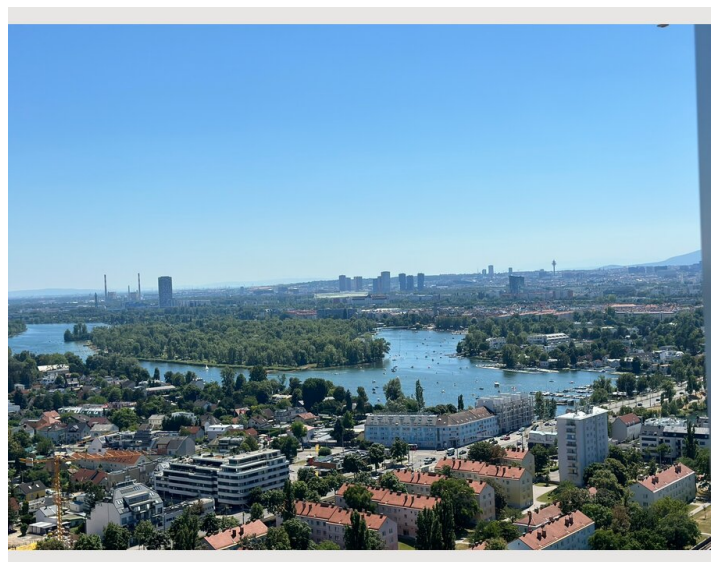
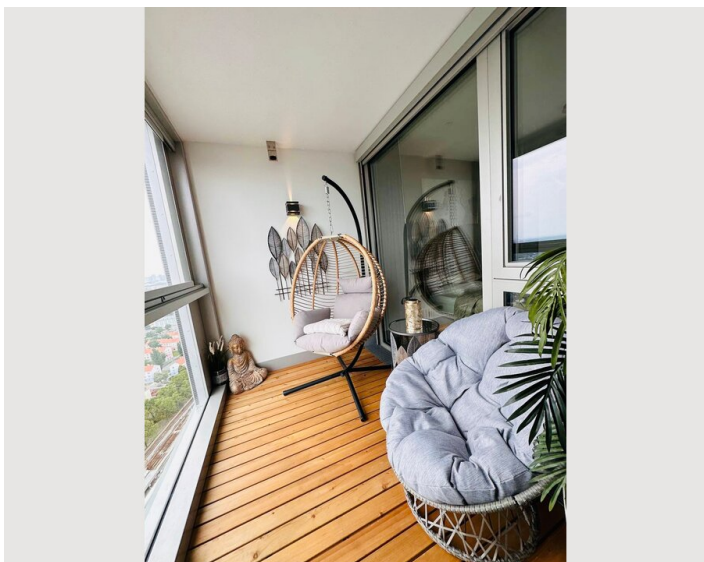
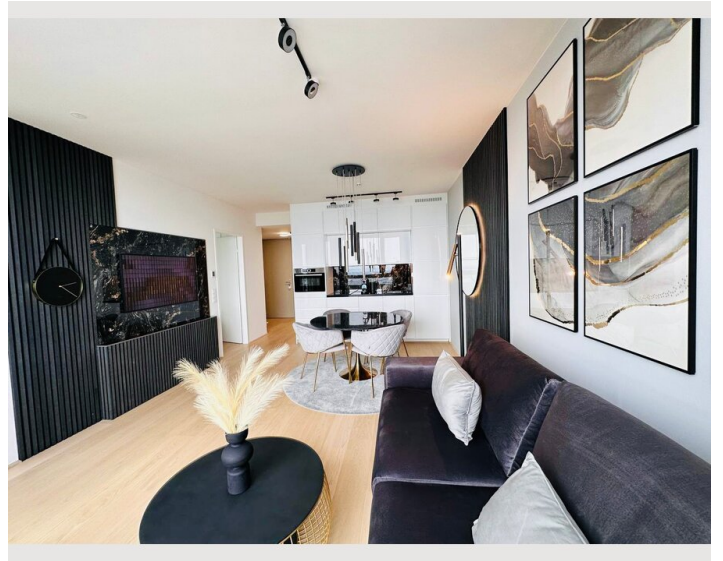
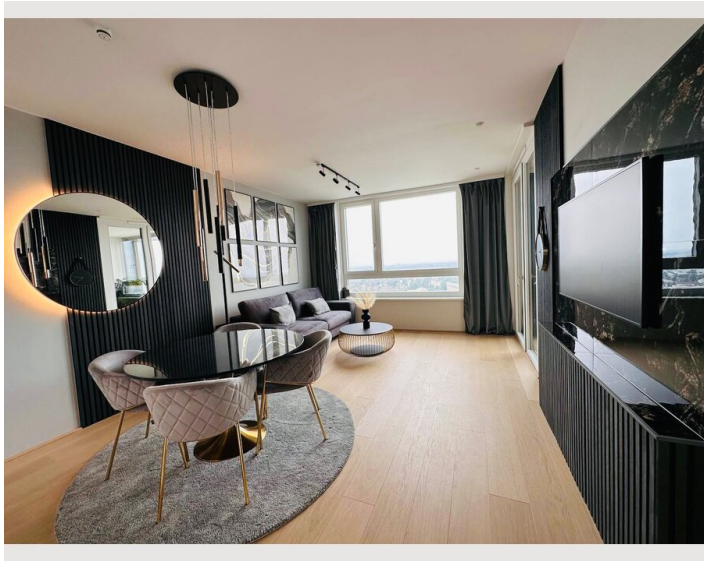
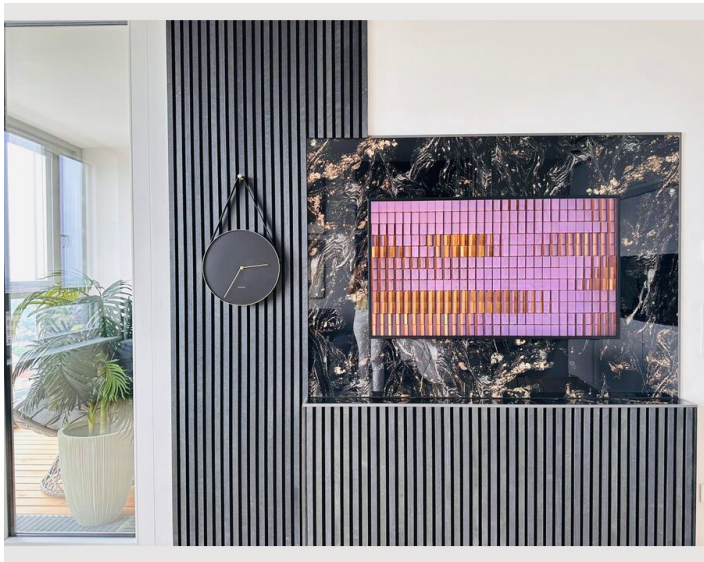
- Garage (€ 150,00)

All prices are gross per month - billing is done directly with the lessor.

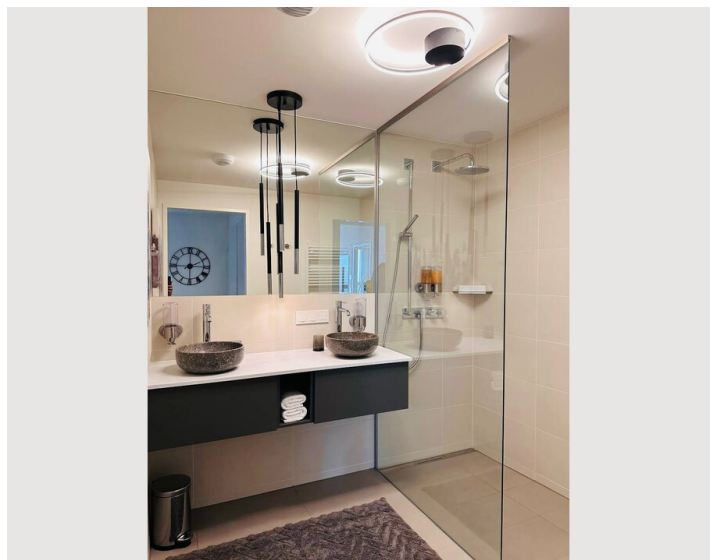
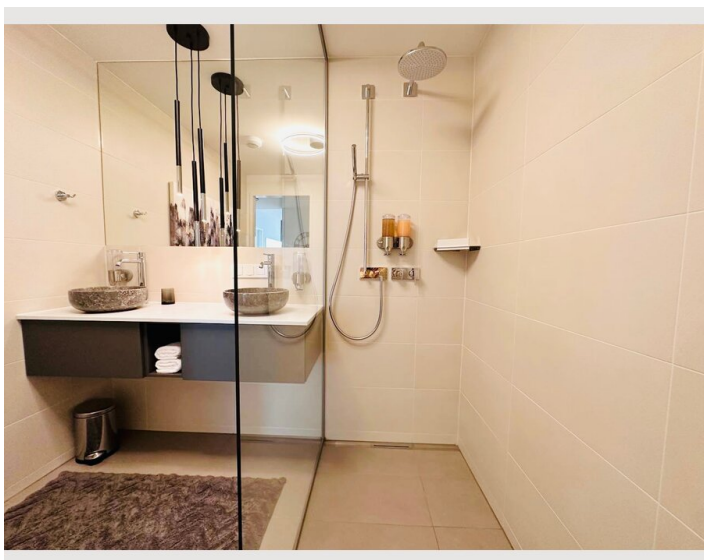
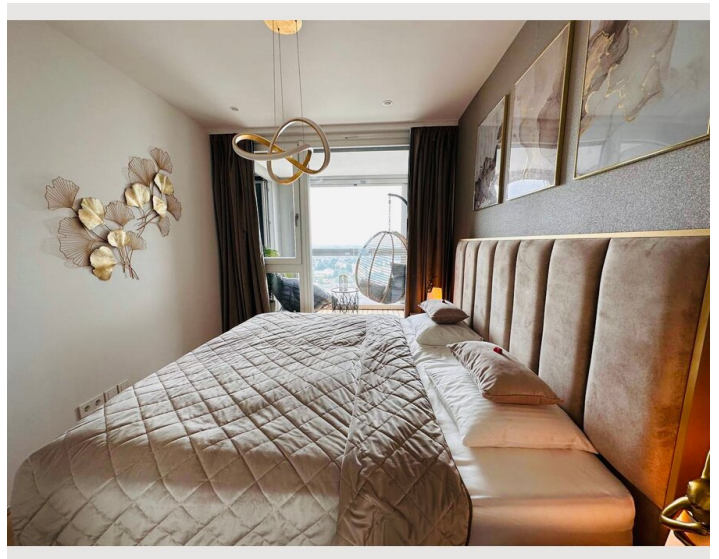
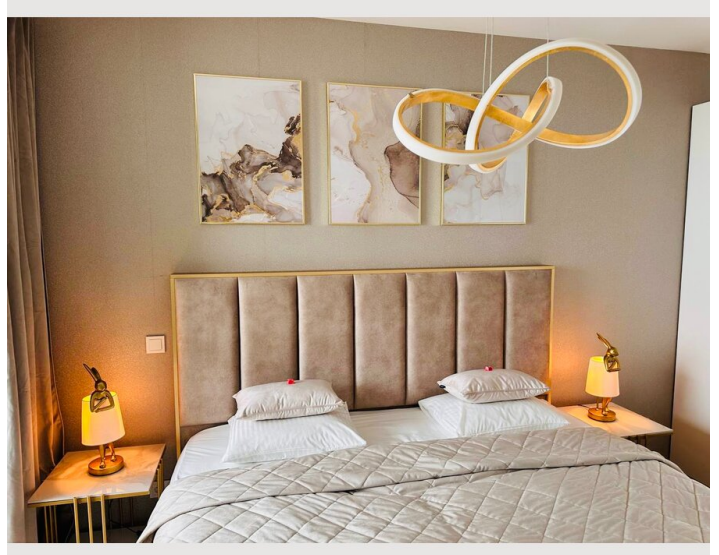
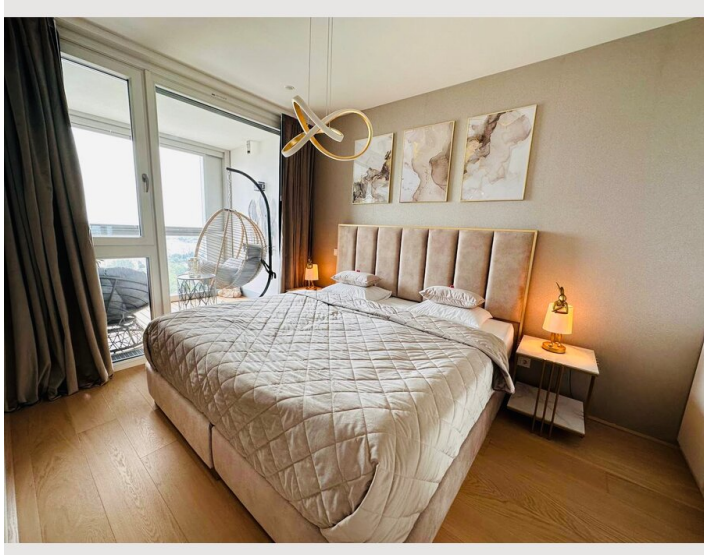
### Picture gallery



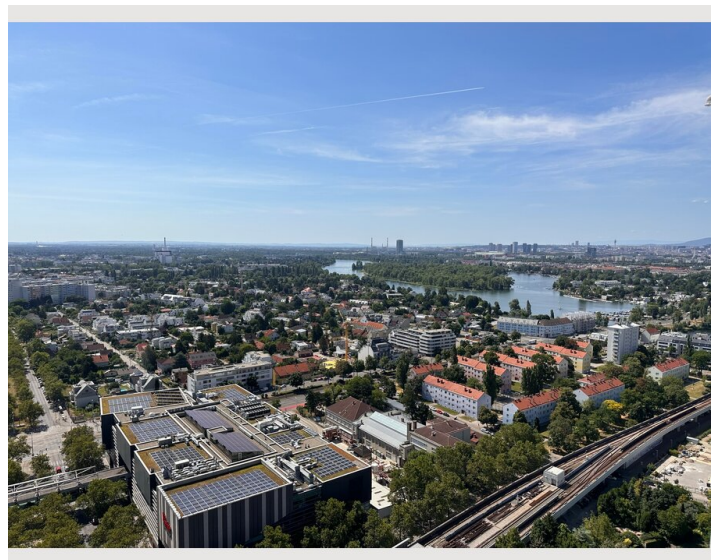
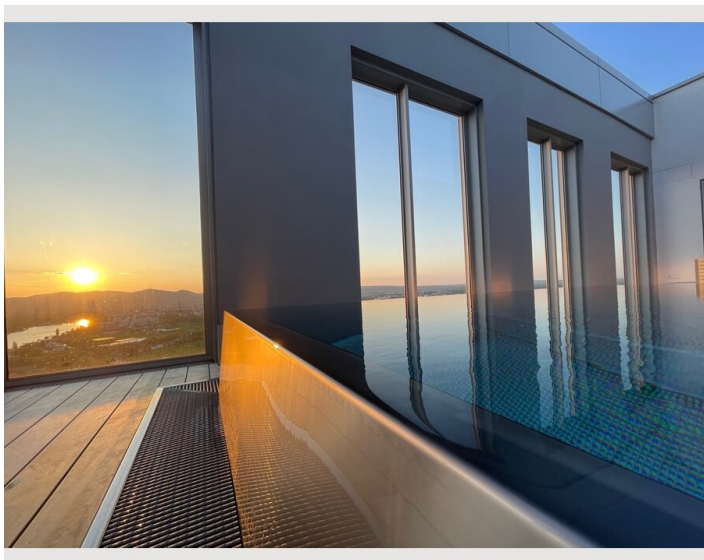
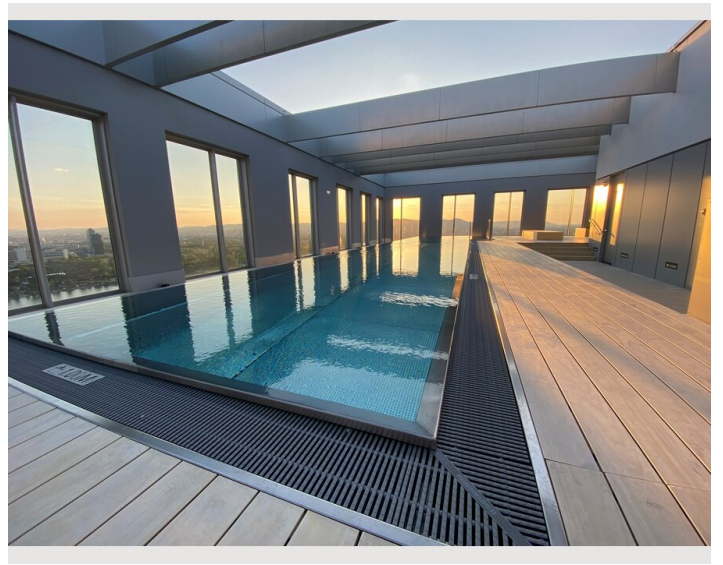
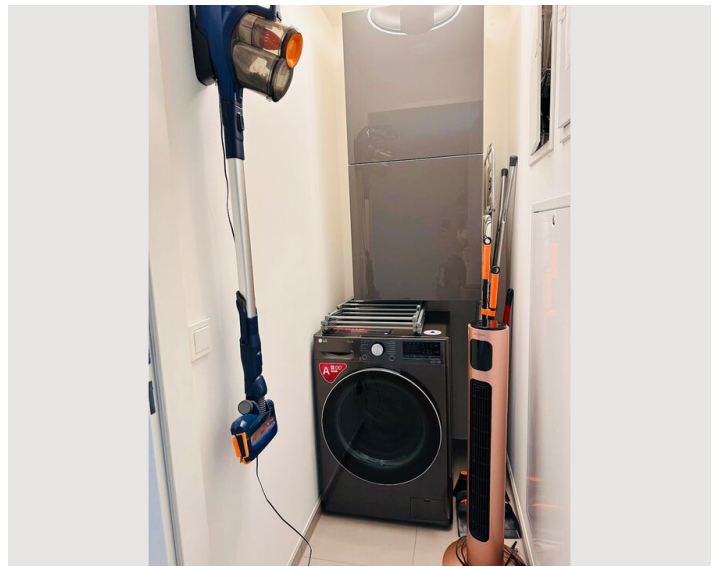
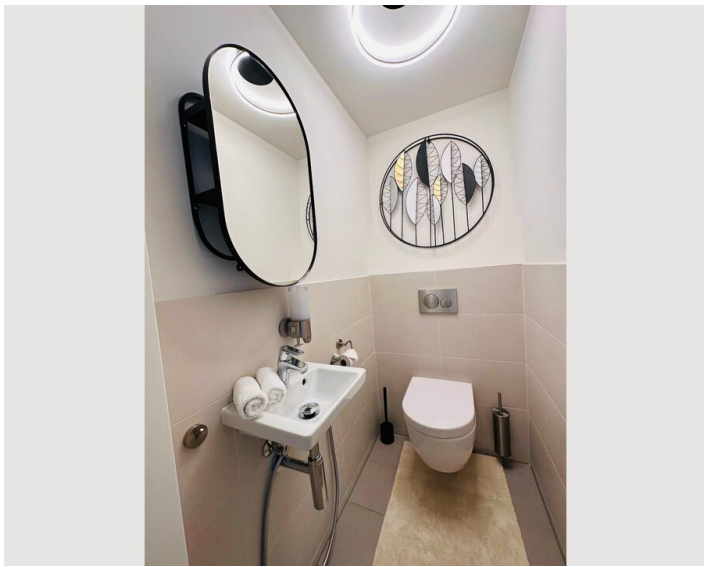




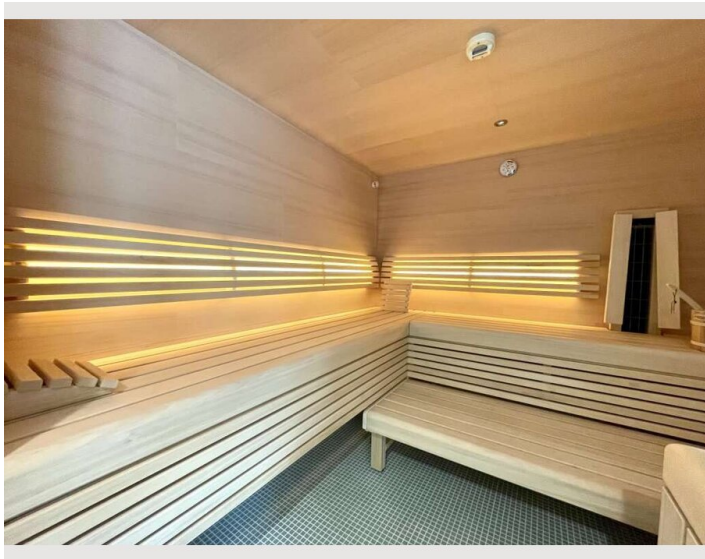
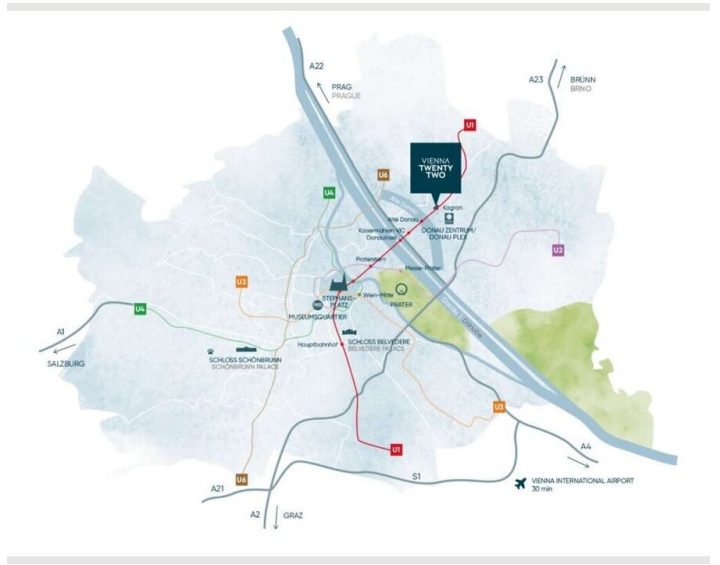
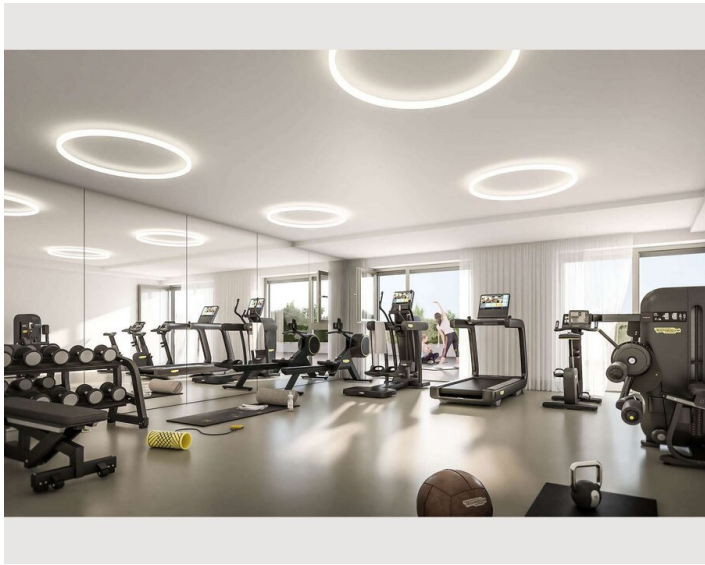
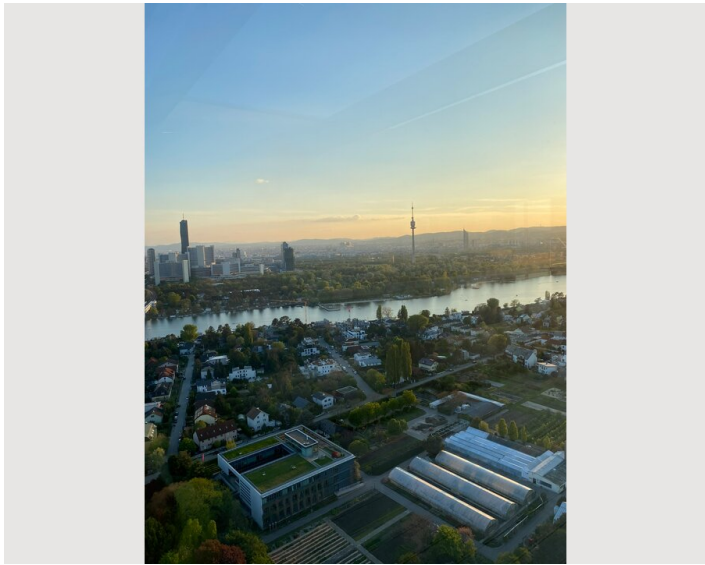




















## Video

Goto Video



## Infrastructure

-  Various bus and tram lines are located right next to the apartment.
-  The underground station Kagran is located right in front of the building. The main train station ("Hauptbahnhof") can be reached within 15 minutes.
-  The station for Vienna Airport Lines line 3 (VAL3) is 5 minutes away. Vienna Schwechat Airport can be reached via this bus connection in 42 minutes at any time of the day.
-  Grocery stores, retail shops and entertainment/restaurants can be found in the shopping center ("Donauzentrum") right opposite of the residential tower.
-  The city center (Stephansplatz) can be reached within 12 minutes by subway.
-  Vienna Airport can be reached within 25 minutes by car.

No matter which means of transport you choose - your apartment has excellent connections to all important destinations in Vienna and beyond. The ideal traffic location next to the U1 subway line ensures that the city center can be reached quickly. Anyone who likes to travel by bike will benefit from the well-developed network of cycle paths.

PUBLIC CONNECTIONS: UNDERGROUND, TRAM, BUS, VIENNA AIRPORT LINES  
12 MIN TO CITY OF VIENNA (U1/CAR)  
20 MIN TO VIENNA MAIN RAILWAY STATION (U1/CAR)  
25 MIN (CAR) OR. 42 MIN (VIENNA AIRPORT LINES) TO INTERNATIONAL AIRPORT  
CONNECTION TO THE VIENNA BICYCLE NETWORK

A total of 225 shops are waiting to be explored by you in the Donauzentrum, located opposite the residential tower. In addition, 62 restaurants and a cinema center ensure enjoyment in your free time.



## Location

