



2 ROOM APARTMENT, 6911 LOCHAU

2.5 room apartment (dream location with lake view on the Pfänderhäng)

Object number: EOAE1

[View and rent online](#)

The 2.5 apartment is situated in a privileged location on the Pfänderhang, a picturesque part of the Lake Constance region. From here, residents can enjoy a breathtaking view of Lake Constance and the surrounding Alps.

| | |
|--------------------------|---------------------|
| Period | 06/04/ - 06/05/2026 |
| Number of persons | 2 |
| Total incl. VAT. | € 2.594,82 |
| Security deposit | € 1.800,00 |

Living space

55m²

Maximum occupancy

2 Persons

Complete accommodation

1 Private bathroom 1 Separated bedroom

Ground floor

Elevator available

Check-in

12:00 - 18:00 Clock

Check-out

12:00 - 15:00 Clock

Sleeping options

Sleeping room



1x Double bed (1,80 m x 2 m)

Description of accommodation

A spacious 2.5-room terrace apartment with approx. 53 m² of living space and an impressive view of Lake Constance is available for rent.

The residential building in which the apartment is located was built in 2000 and is very well maintained. The apartment is heated by underfloor heating, which is operated by an air heat pump installed in 2022.

The focal point of the apartment is the living area, which offers a breathtaking view of Lake Constance. Thanks to the apartment's excellent layout, the kitchen is arranged separately in the open-plan living area. The living room and bedroom offer direct access to the approx. 8 m² terrace with sunny views.

- Own wallbox 11kw for hybrid & e-vehicles.
- New kitchen with dishwasher, fridge and induction hob.
- Walls and ceilings freshly painted.
- Floor sanded and varnished.
- Completely renovated (condition: as good as new)

Equipment & Features



Basic equipment

- Terrace
- Music system/docking station
- Private washing machine
- Bedclothes
- Private toilet
- Vacuum cleaner
- Hairdryer
- Internet/Wifi
- TV
- Private dryer
- Towels
- Private parking space
- Cleaning utensils



Fireplace

- Gas grill
- Bioethanol fireplace



First supply

- Toilet paper
- Soap
- shampoo
- Fridge filling on request



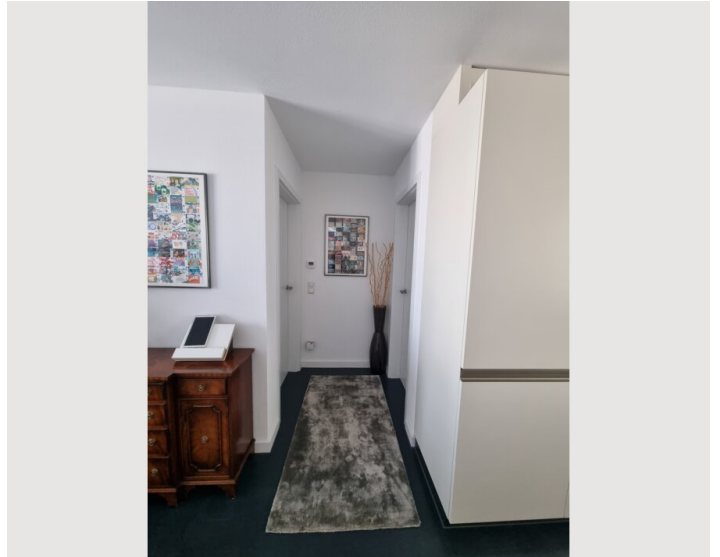
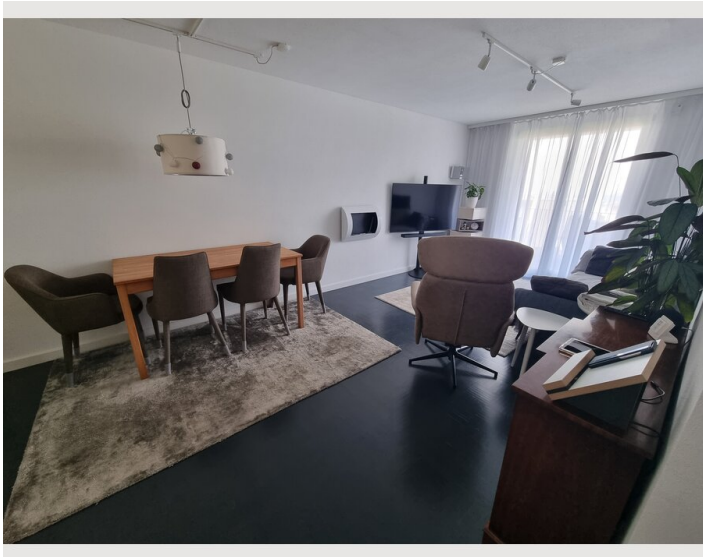
Kitchen

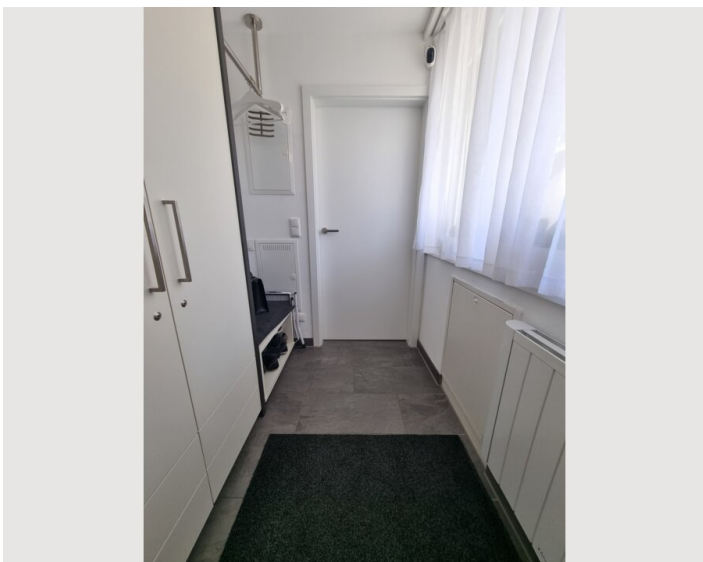
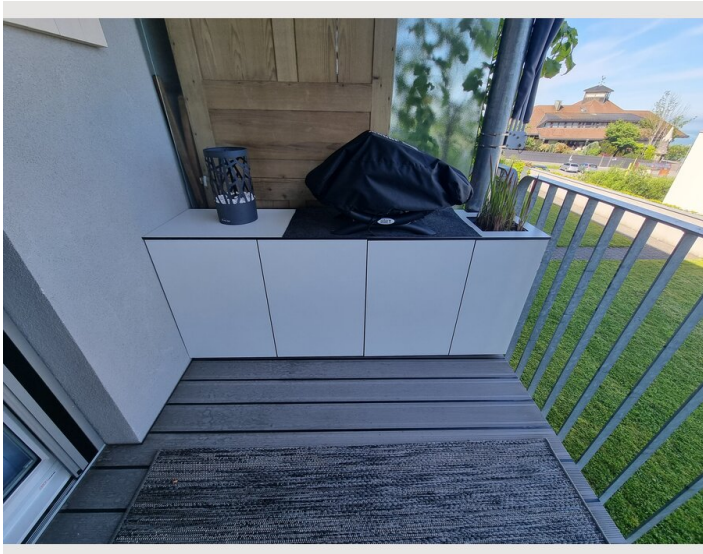
- Private kitchen
- Glasses/Tableware
- Dishwasher
- Cooking utensils
- Espresso machine

Informations


- Not suitable for children
- Free short-term parking zone
- Pets forbidden
- Bicycle room free of charge
- Smoking not allowed
- Private entrance
- Regular cleaning at extra cost

Picture gallery





Infrastructure

 directly in front of the house

 1km away

 1km away

The apartment is situated in a privileged location on the Pfänderhang, a picturesque part of the Lake Constance region. From here, residents can enjoy a breathtaking view of Lake Constance and the surrounding Alps. The Pfänder, known as Bregenz's local mountain, not only offers an impressive panoramic view, but also numerous leisure activities such as hiking, cycling and skiing in winter.

Despite this idyllic location, the amenities of the municipality of Lochau and the town of Bregenz, such as shops, restaurants and cultural facilities, are just a few minutes' drive away.

Residents also benefit from the fresh mountain air and the opportunity to immerse themselves in nature right on their doorstep. You can wake up to the sound of birdsong in the morning and admire the sunset over Lake Constance in the evening. This is undoubtedly one of the most sought-after residential locations in the region, combining closeness to nature with comfort.

Location

