



STUDIO APARTMENT, 4020 LINZ

1 room apartment 35sqm

Object number: FJRS1

[View and rent online](#)

Period	14/07/ - 14/08/2025
Number of persons	2
Total incl. VAT.	€ 1.658,06
Security deposit	€ 1.100,00

high quality 1 room apartment Well equipped, central location Own bathroom/toilet, WM balcony own underground car park



Living space

35m²



Maximum occupancy

2 Persons



Complete accommodation [?]

1 private bathroom 1 Living-Sleepingroom



4. floor

Elevator available



Check-in

08:00 - 20:00 Clock



Check-out

08:00 - 20:00 Clock

Sleeping options

Living and sleeping



1x Double bed (1,40 m x 2 m)

Descripton of accommodation

Nobly designed entrance area, the elevator takes you to the apartment on the 4th floor, high-quality furnishings with a large west-facing balcony.

The separate entrance area leads to the bathroom, which is equipped with a shower, toilet with extra sink and a WM connection.

From the hallway you enter the main room, which is lit solely by the large floor-to-ceiling windows with plenty of sunlight. Oak parquet and built-in underfloor heating

The highlight of the apartment, the large and cozy loggia, equipped with a socket and light. Here you can enjoy from about 14 hours of sunshine, own parking space in the underground car park

Equipment & Features



Basic equipment

- Balcony
- Music system/docking station
- Private washing machine
- Towels
- Garage
- Iron & ironing board
- Hairdryer
- Internet/Wifi
- TV
- Bedclothes
- Private toilet
- Vacuum cleaner
- Cleaning utensils



First supply

- Toilet paper
- Soap
- shampoo
- Nespresso capsules



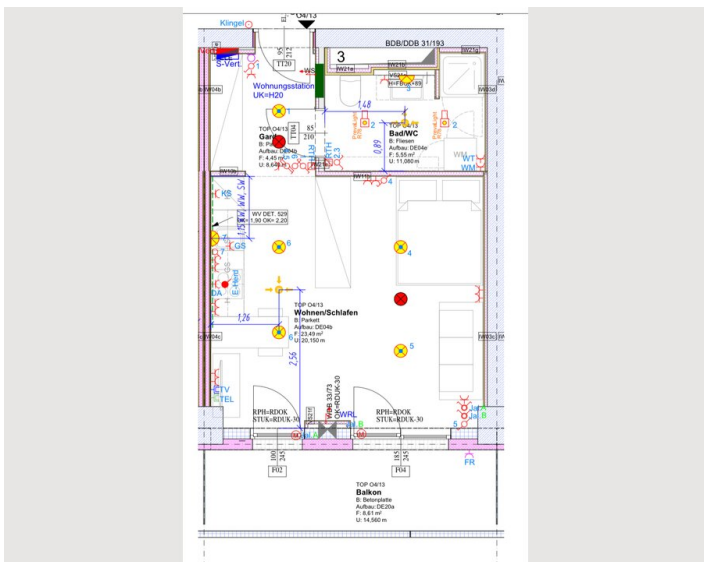
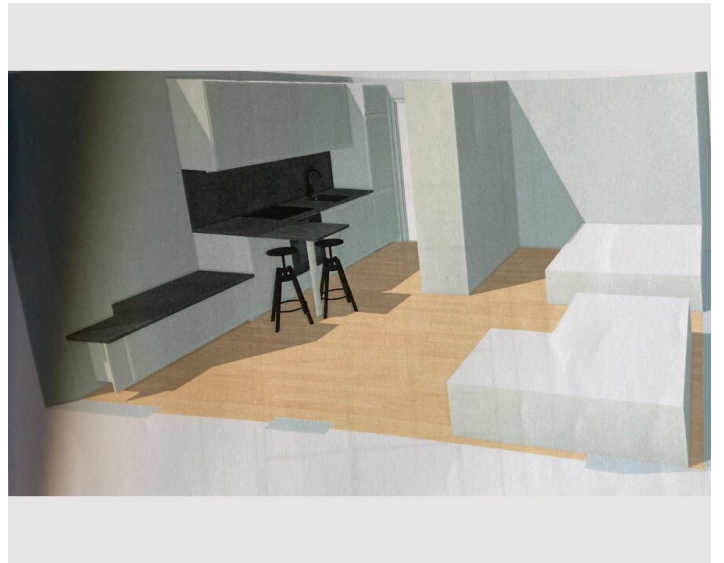
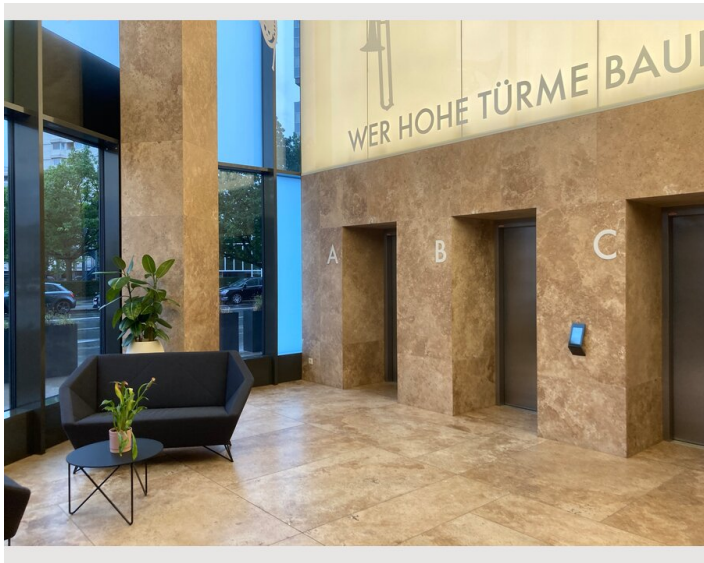
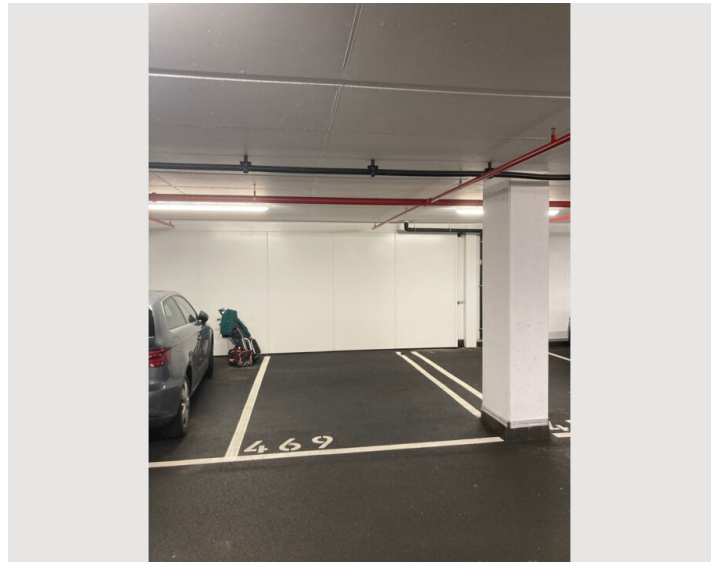
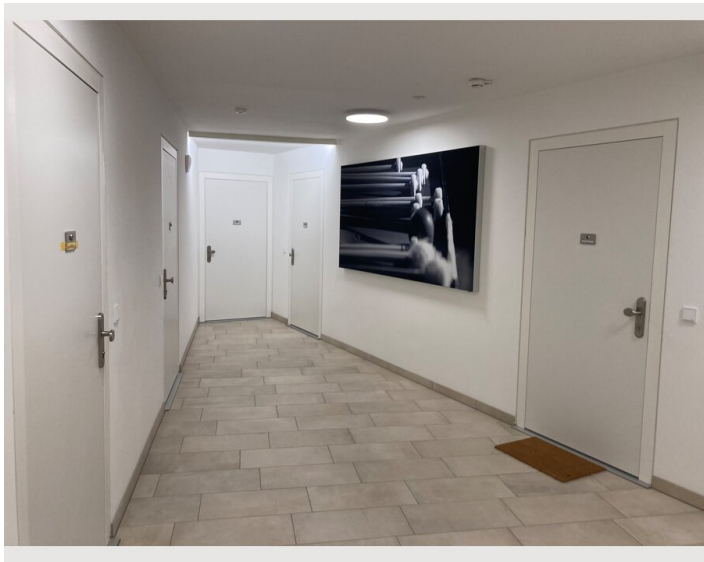
Kitchen

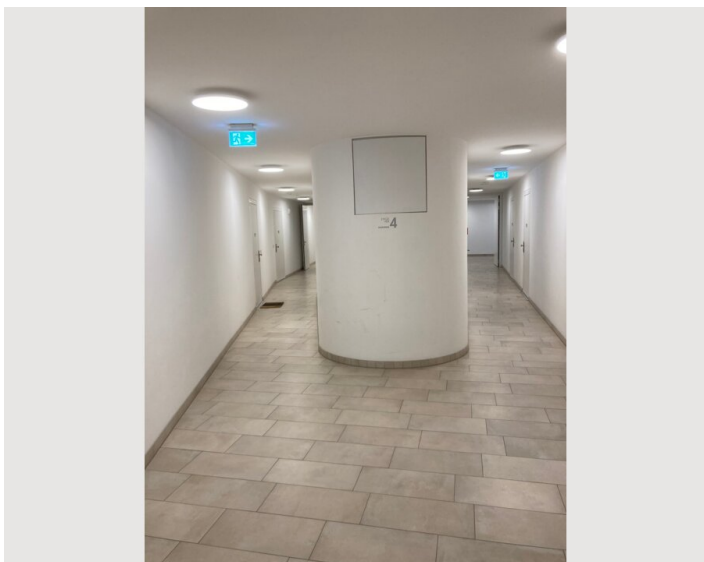
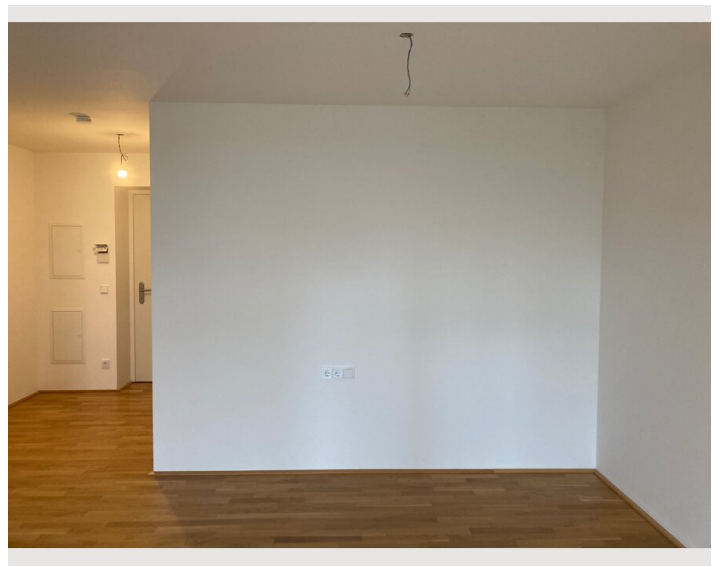
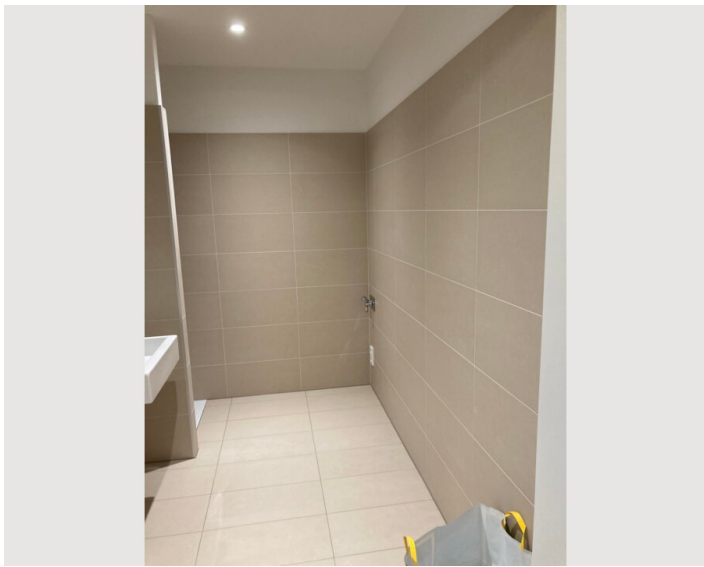
- Private kitchen
- Coffee machine
- Glasses/Tableware
- Dishwasher

Informations


- Smoking not allowed
- Pets forbidden
- Private entrance
- Bicycle room free of charge

Picture gallery







Infrastructure

 350m

 200m

 1km

 10min by tram

direct connection to efficient infrastructure (parking garage, public transport, city motorway, future 4 Danube bridges, proximity to the country road)

Shopping, recreation, gastronomy in the immediate vicinity

A spacious park area near the railway bridge with a skate park, beach volleyball court, traffic training park, asphalt stick lanes, an equipment active park and many other highlights for leisure activities can be reached quickly and easily on foot or by tram

Location

