



STUDIO APARTMENT, 5020 SALZBURG

Spacious one-room-apartment with balcony in quiet, central location

Object number: SCHD4

[View and rent online](#)

The quiet, light-flooded one-room apartment (approx. 54 sqm) with spacious balcony is located in the district of Riedenburg in the first floor of a well kept building in close proximity to the inner city of Salzburg.

Period	09/12/2025 - 09/01/2026
Number of persons	2
Total incl. VAT.	€ 1.670,62
Security deposit	€ 1.300,00



Living space

52m²



Maximum occupancy

2 Persons



Complete accommodation [?]

1 Private bathroom 1 Living-Sleepingroom



1. floor

Elevator available



Check-in

14:00 - 18:00 Clock



Check-out

14:00 - 18:00 Clock

Sleeping options

Living and sleeping



1x Double bed (1,40 m x 2 m)



1x Sofa bed (2 persons)

Descripton of accommodation

The apartment has a spacious and bright living room with dining table, sofa sitting area, desk and double bed, cable TV, CD and WIFI, sunny, west-oriented balcony, fully equipped kitchen with electric and microwave oven and coffee/ espresso machine, bath/WC with bath and shower tub. A washing machine with tumble dryer is found in a common room.

Equipment & Features



Basic equipment

- Balcony
- Music system/docking station
- Community washing machine
- Bedclothes
- Private toilet
- Iron & ironing board
- Hairdryer
- Internet/Wifi
- TV
- Community dryer
- Towels
- Vacuum cleaner
- Cleaning utensils



First supply

- Toilet paper
- Soap
- shampoo
- Nespresso capsules



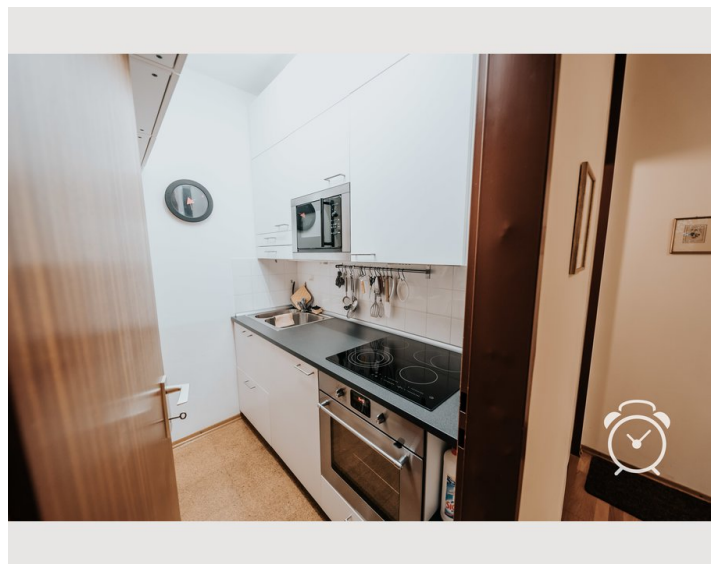
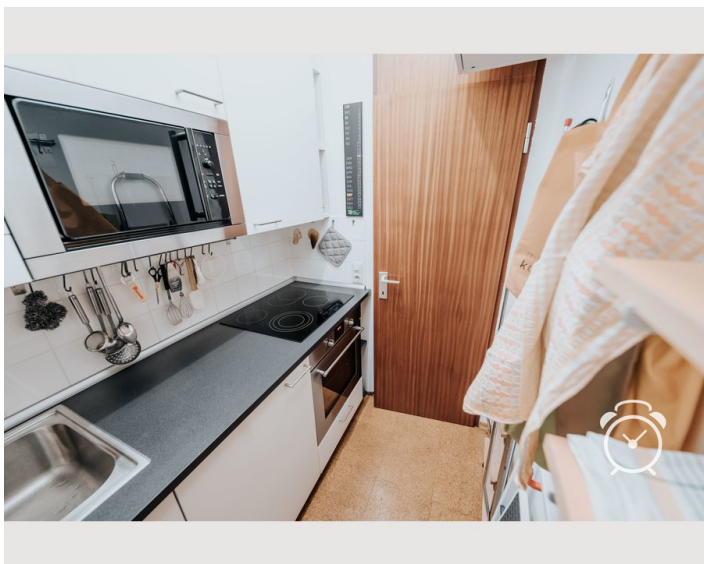
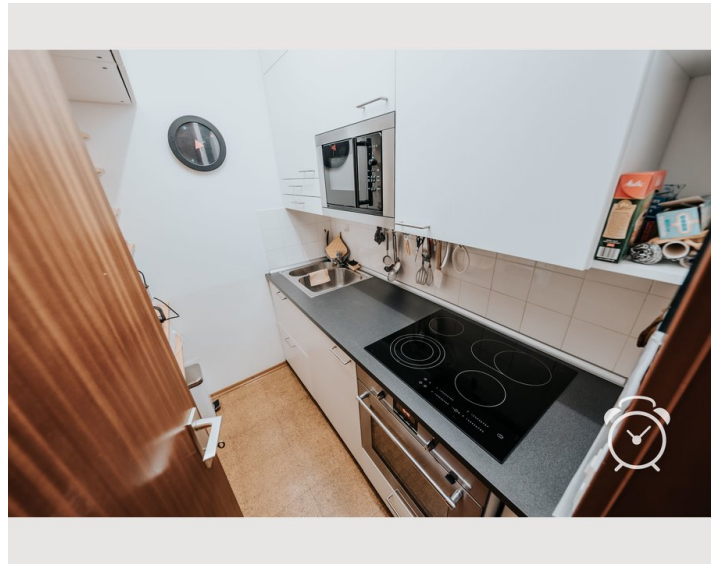
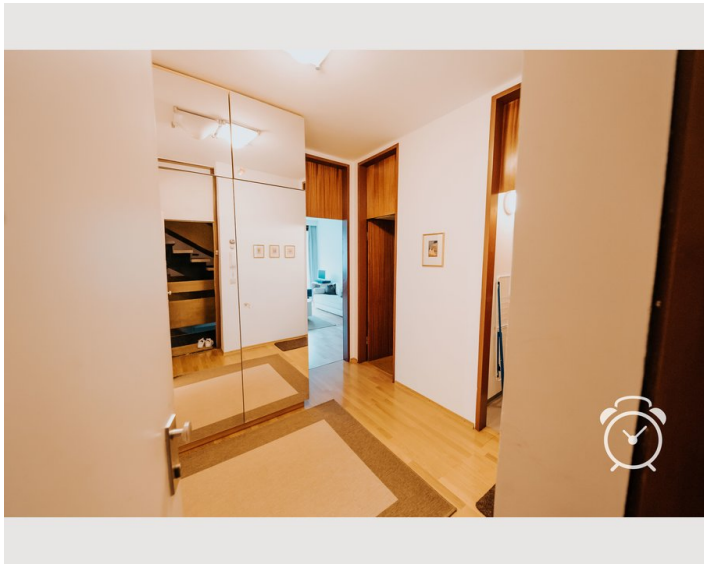
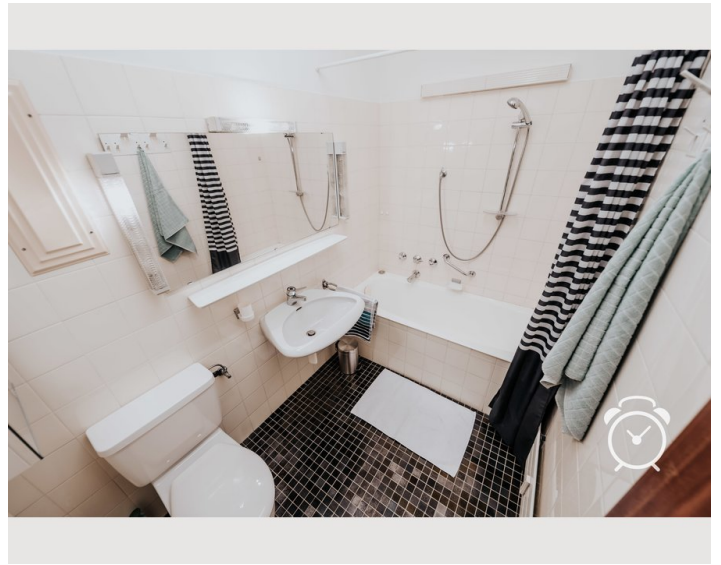
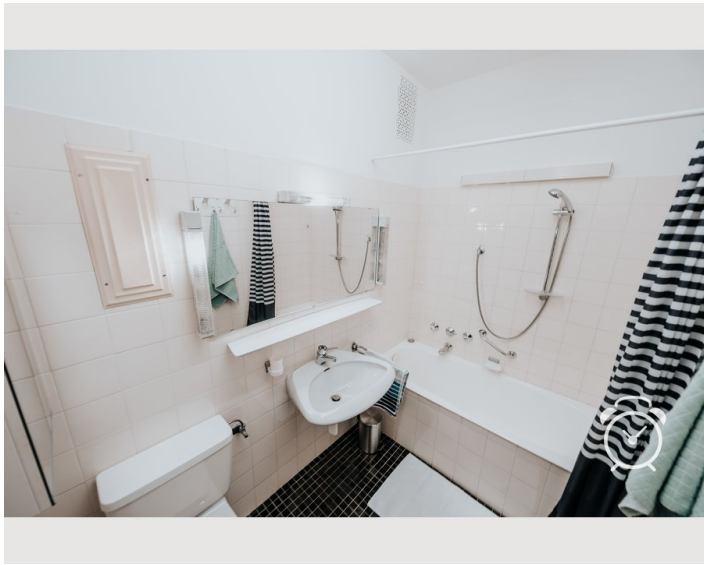
Kitchen

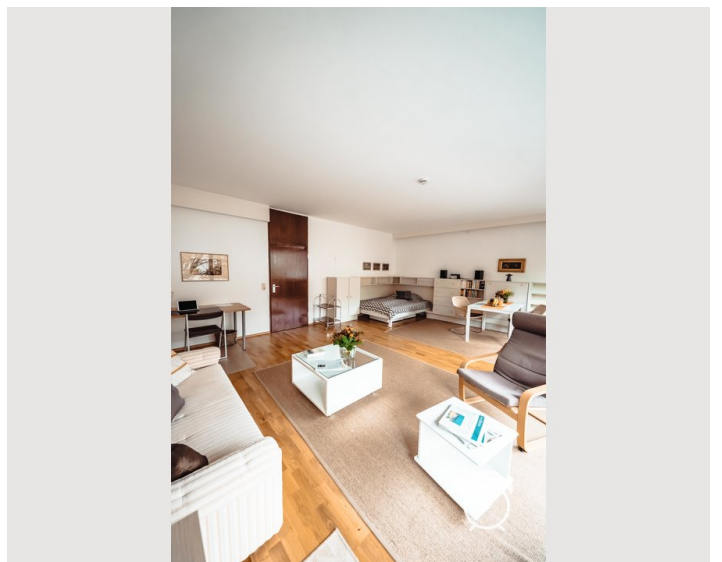
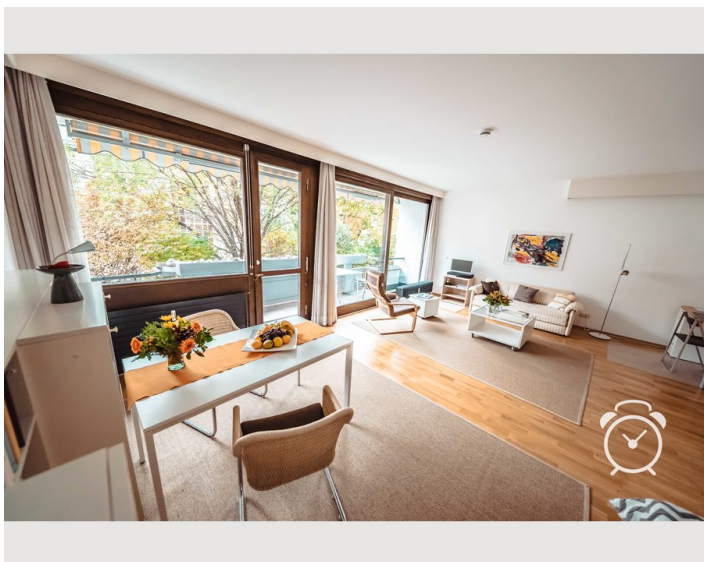
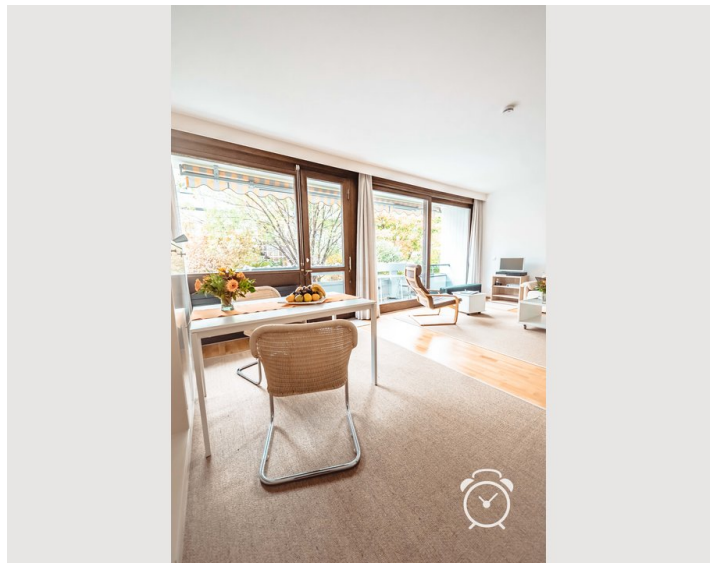
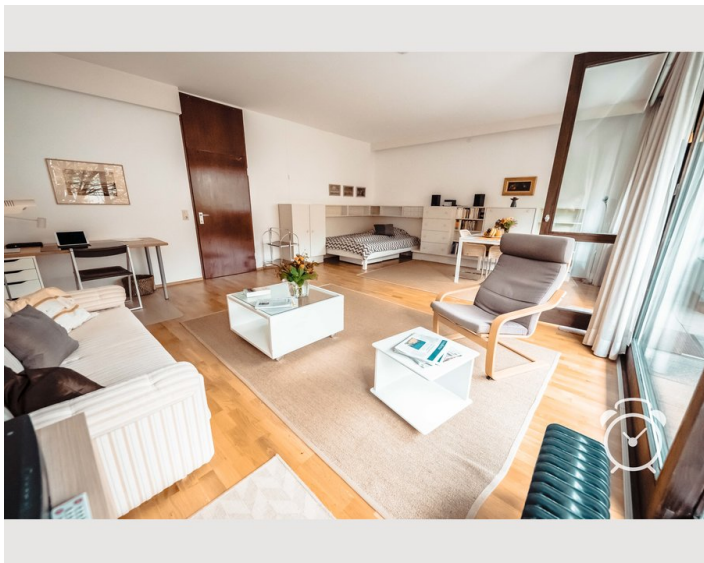
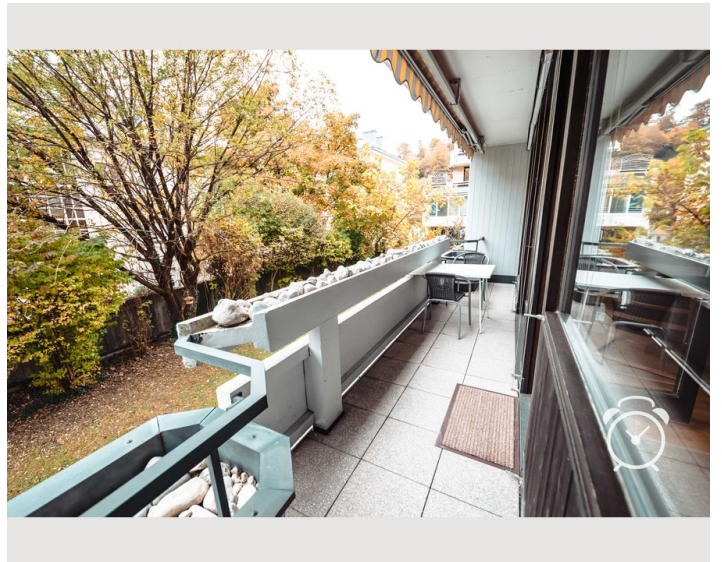
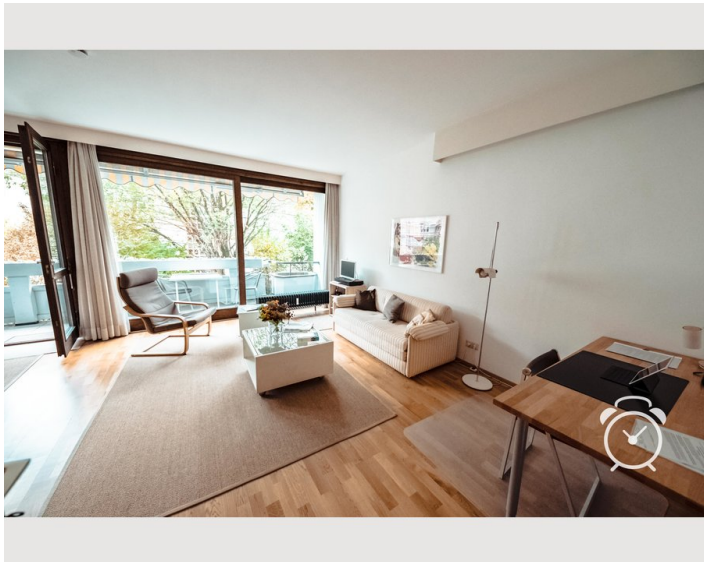
- Private kitchen
- Glasses/Tableware
- Filter coffee
- Cooking utensils
- Espresso machine
- Microwave

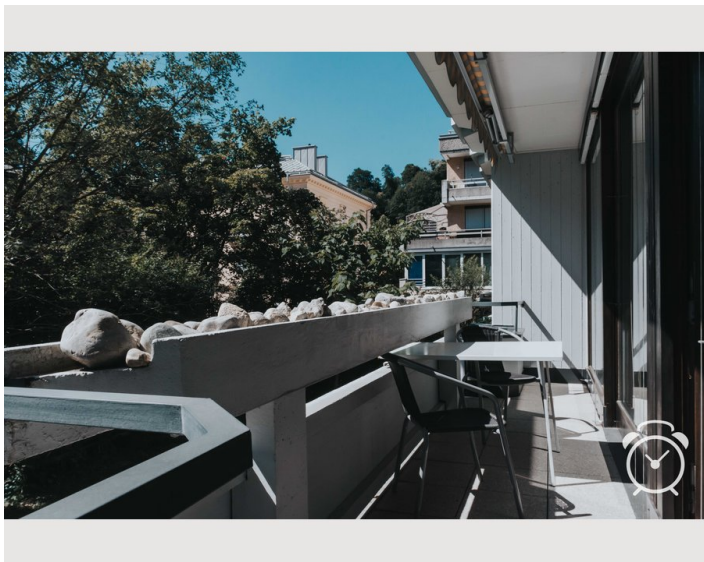
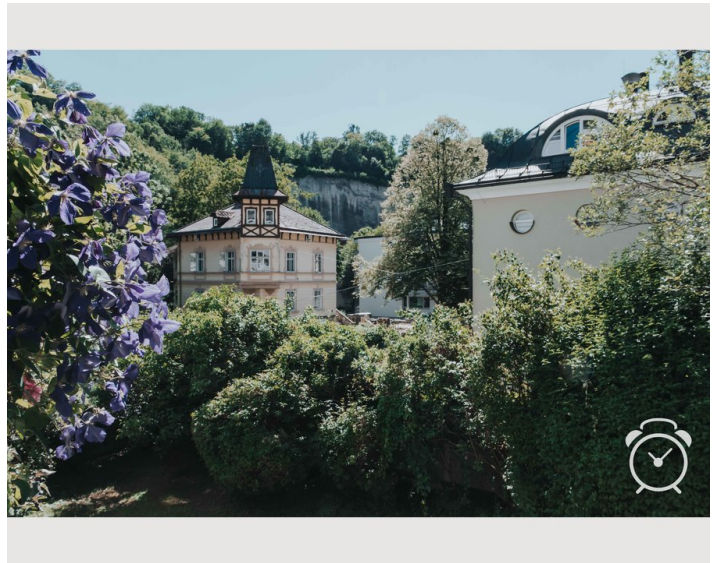
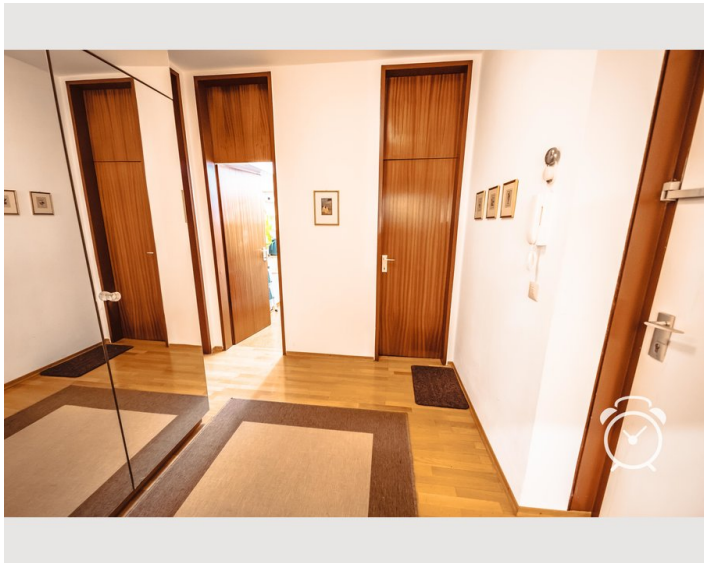
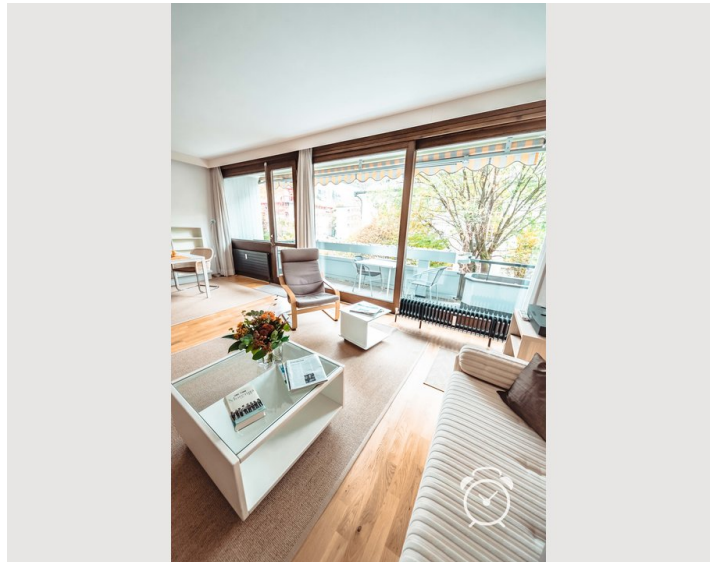
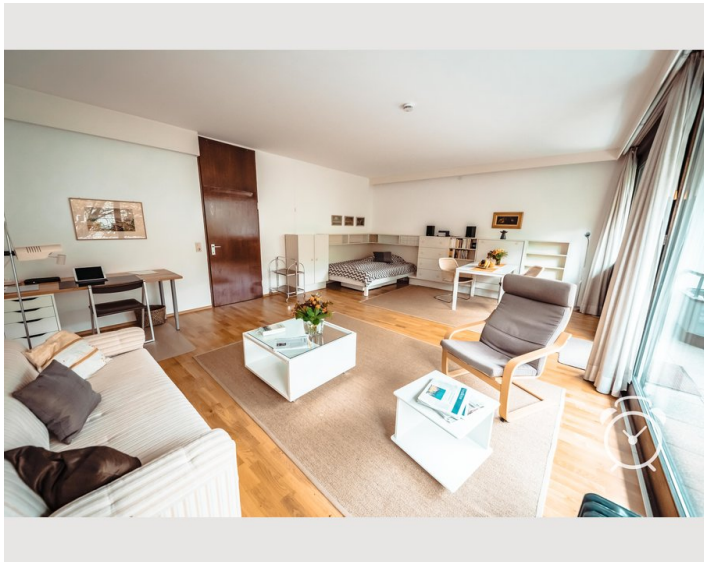
Informations

- Smoking not allowed
- Desk/Workplace
- Pets forbidden
- Short-term parking zone subject to a charge
- Private entrance

Picture gallery







Video

Goto Video



Infrastructure

- 📍 5 min by walk to the festival house
- 🛒 Supermarket (Spar) 5 minutes by walk
- 🚊 Line 1 (2 min. by walk)
- 🚇 15 minutes by public transport
- 🚏 Ferdinand-Hanusch-Platz (public transport hub) 10 minutes by walk
- 🚇 15 minutes by public transport

In spite of its inner-city location, Riedenburg was able to preserve its original flair with direct access to Mönchsberg. Also, the nearby central bus line 1 (every ten minutes) provides easy access to the public transport system of Salzburg and its surroundings. Both, the historic centre (5 walking minutes) as well as the festival theatres (8 walking minutes) can be easily reached by pedestrian tunnels.

Location

