



STUDIO APARTMENT, 1040 VIENNA

# Quiet flat at Draschepark/Vienna Main Station

Object number: RHEU1

[View and rent online](#)

The newly renovated flat is located on a raised ground floor and faces a quiet courtyard where in springtime there's a green view and flowers are blooming.

Period	16/06/ - 16/07/2025
Number of persons	2
Total incl. VAT.	€ 1.259,38
Security deposit	€ 1.000,00



**Living space**

35m²



**Maximum occupancy**

2 Persons



**Complete accommodation**

1 private bathroom 1 Living-Sleepingroom



**1. floor**



**Check-in**

17:30 - 17:30 Clock



**Check-out**

17:30 - 17:30 Clock

## Sleeping options

### Living and sleeping



1x Double bed (1,80 m x 2 m)

## Description of accommodation

The quiet and northern-facing flat is nice and cool during summertime and easy to heat during Winter. Entering the flat, there is a little veranda, a modern tiled floor, that leads to the kitchen area where there is also the washing machine. From the kitchen you step into the small bathroom that contains an extra deep shower-tub. Also from the kitchen, you walk into the living/sleeping room which is furnished with light-colored furniture. This room has a newly refurbished wooden floor. Highlight is the blue/silver glass/steel lamp which you can also dim into various shades of light. A cupboard, a bed, a couch a small table and chairs are in this room.

### Equipment features



#### Basic equipment

- Internet/Wifi
- Private washing machine
- Towels
- Vacuum cleaner
- Hairdryer
- TV
- Bedclothes
- Private toilet
- Cleaning utensils



#### First supply

- Toilet paper



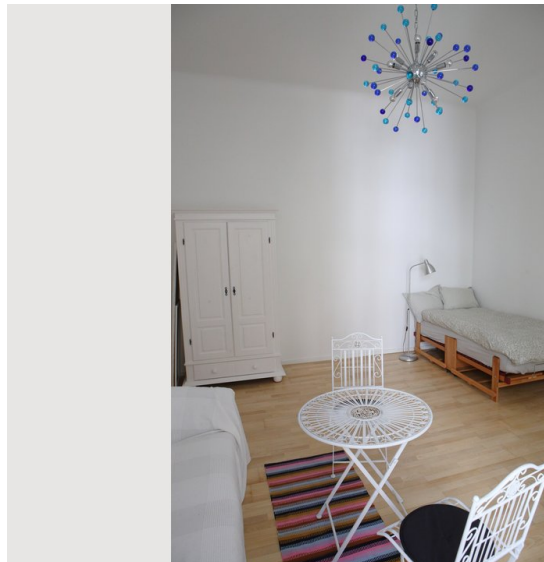
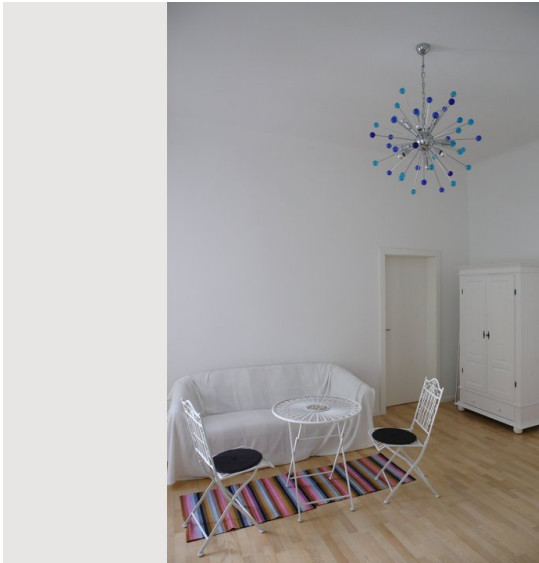
#### Kitchen

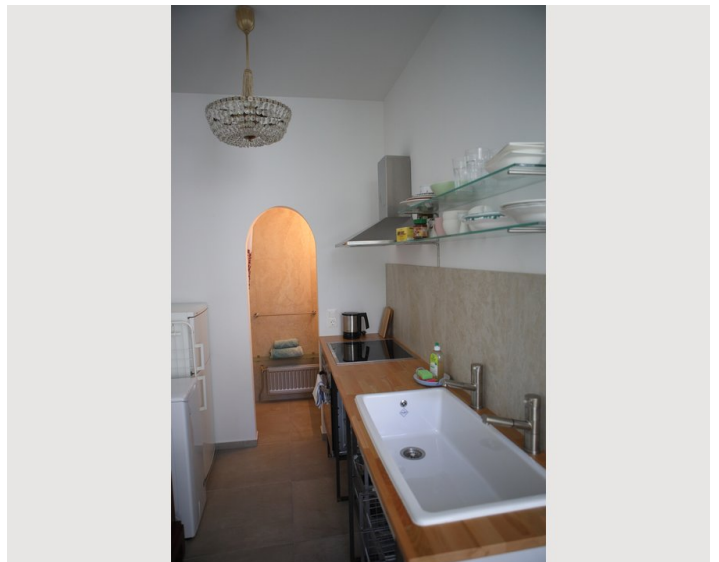
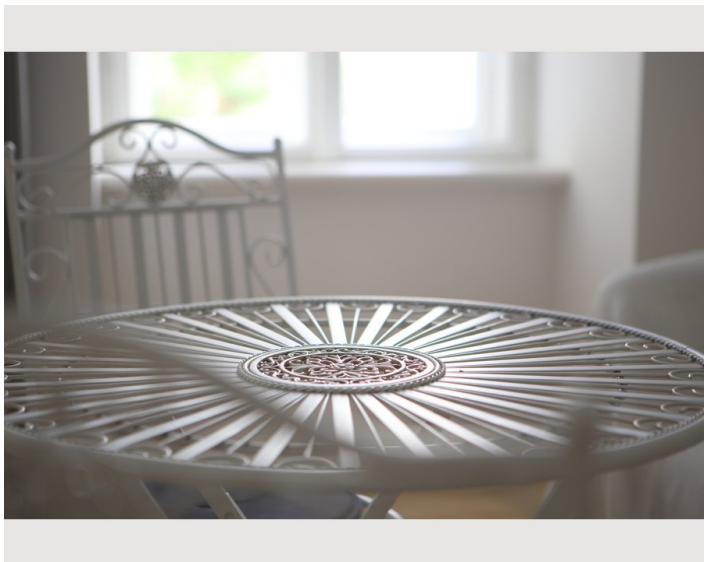
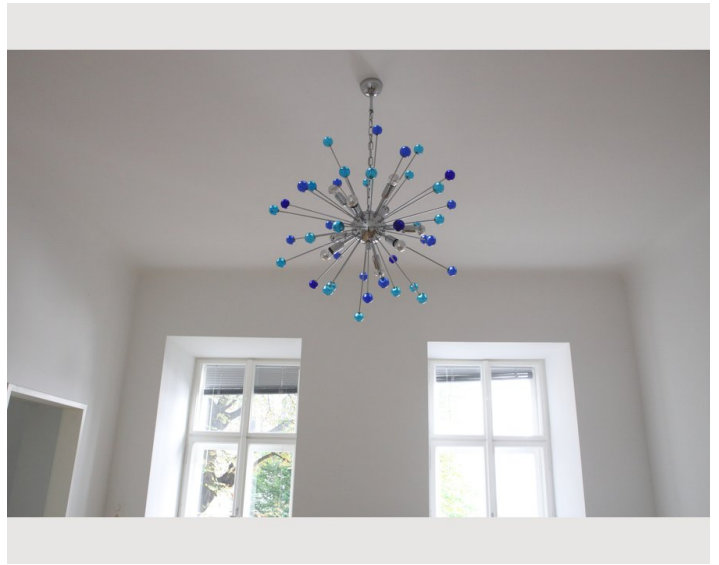
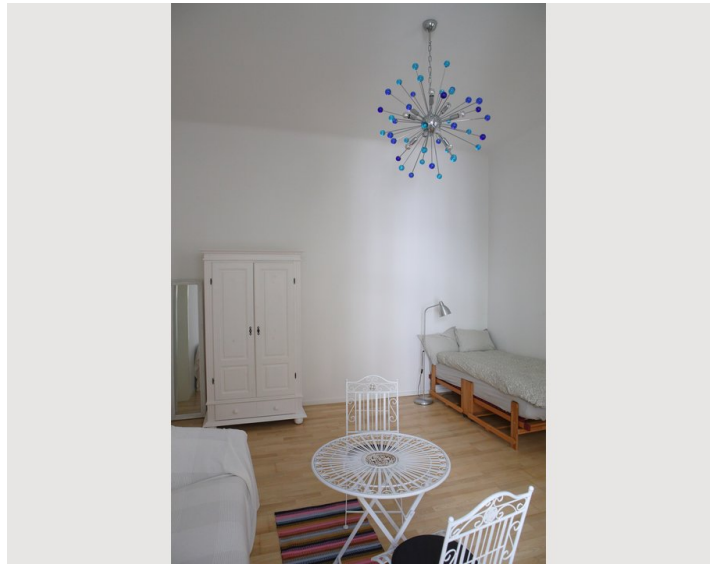
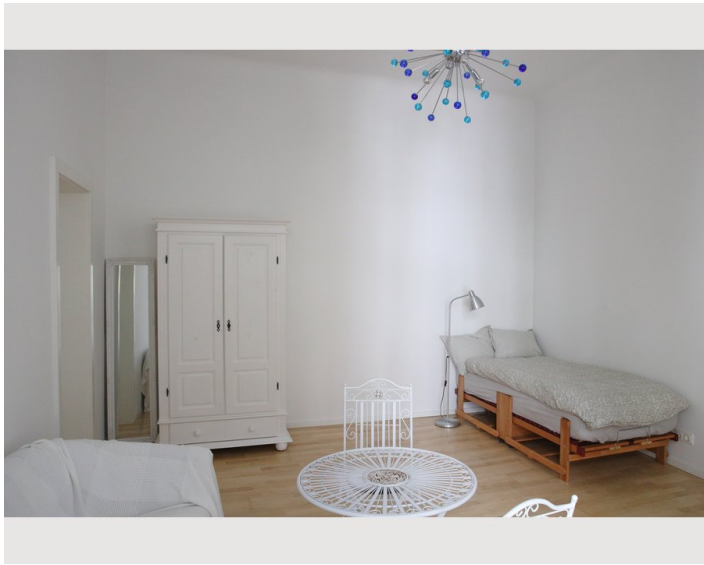
- Private kitchen
- Glasses/Tableware
- Cooking utensils
- Microwave

### Informations

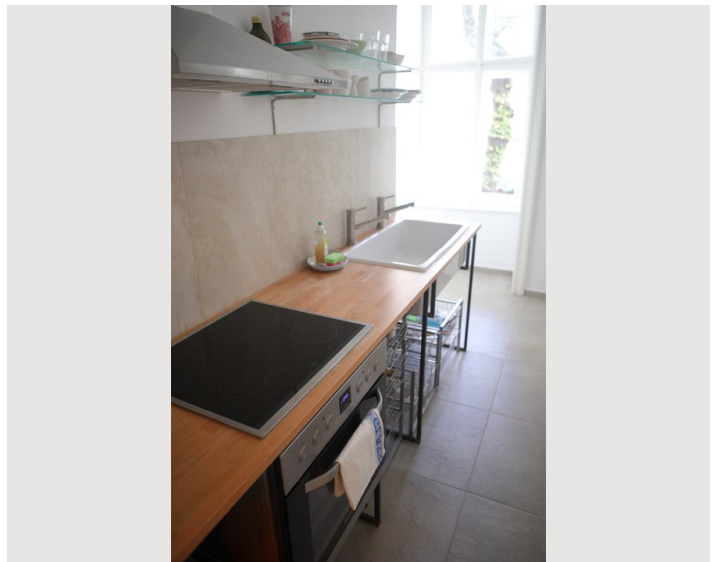
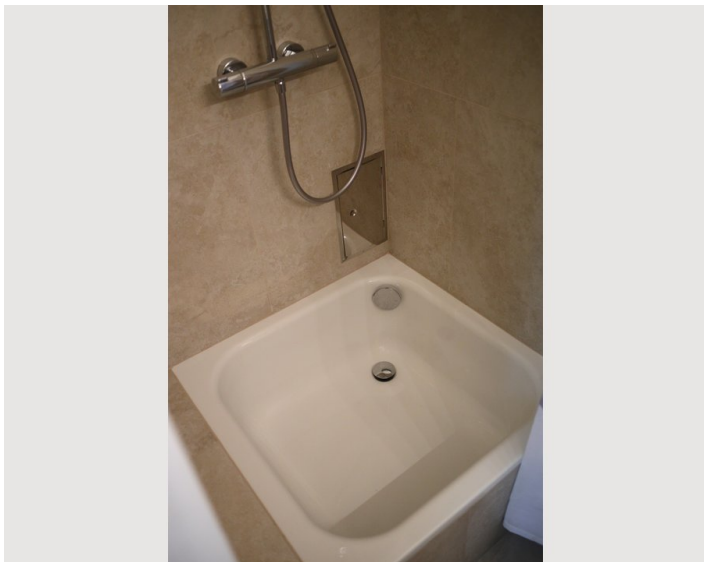
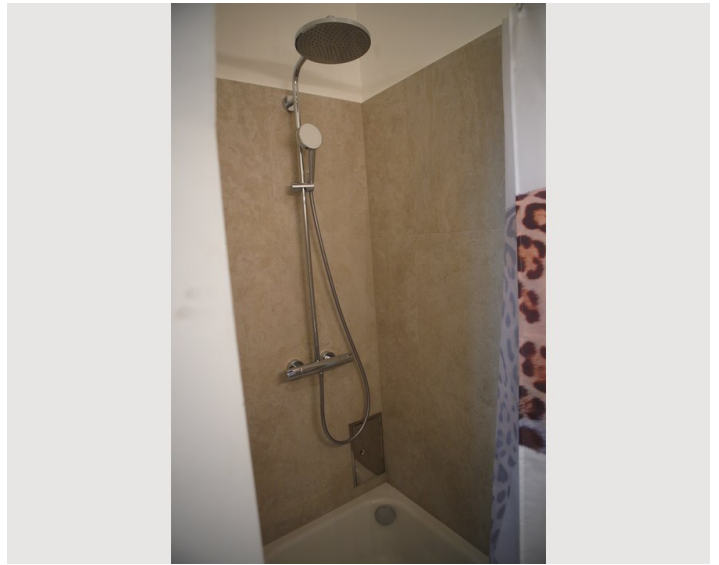
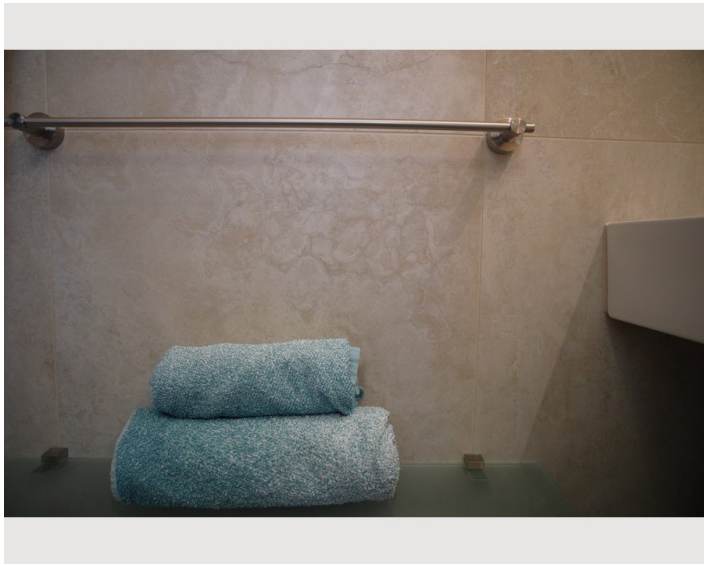
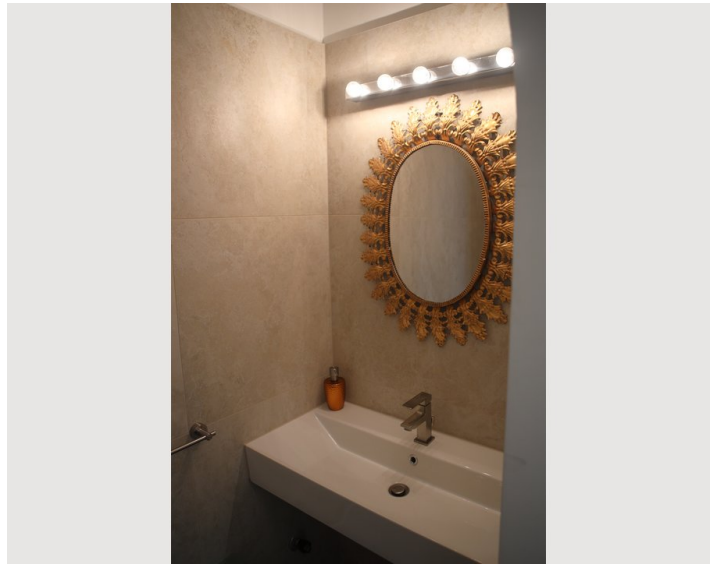
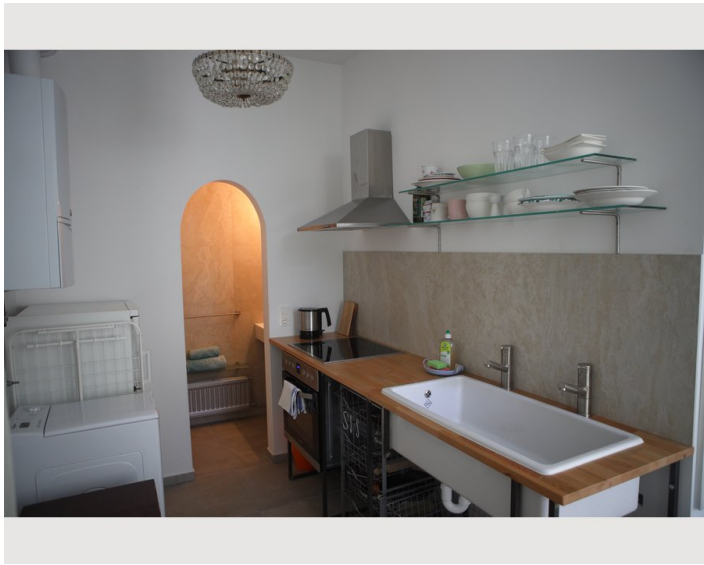
- Suitable for construction workers
- Short-term parking zone subject to a charge
- Pets forbidden
- Smoking not allowed
- Private entrance
- Bicycle room free of charge

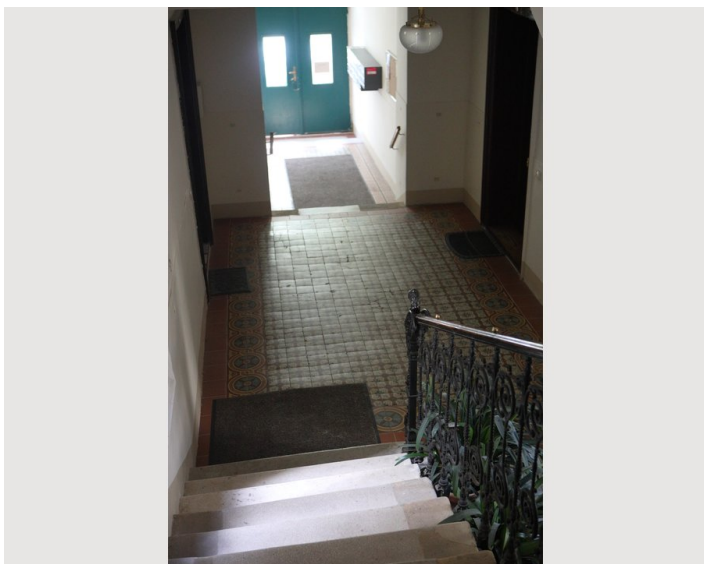
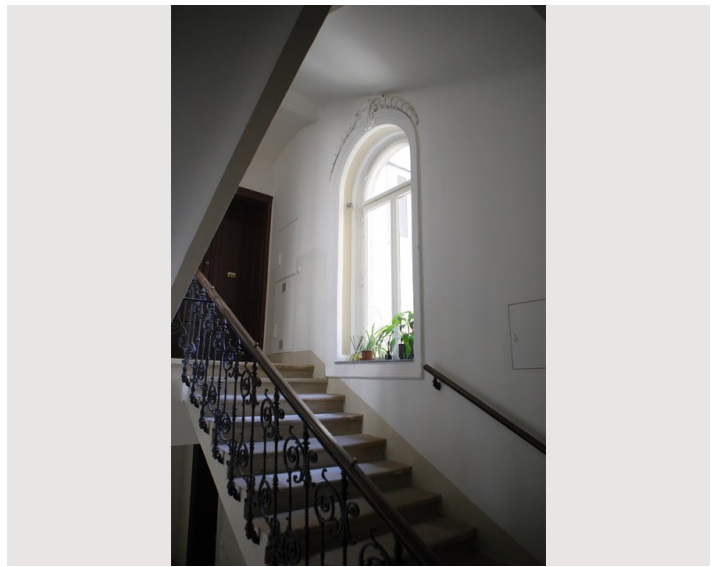
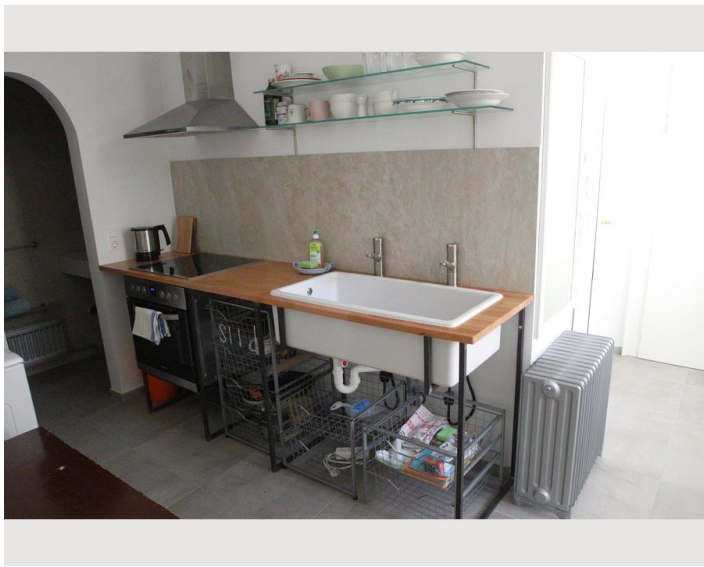
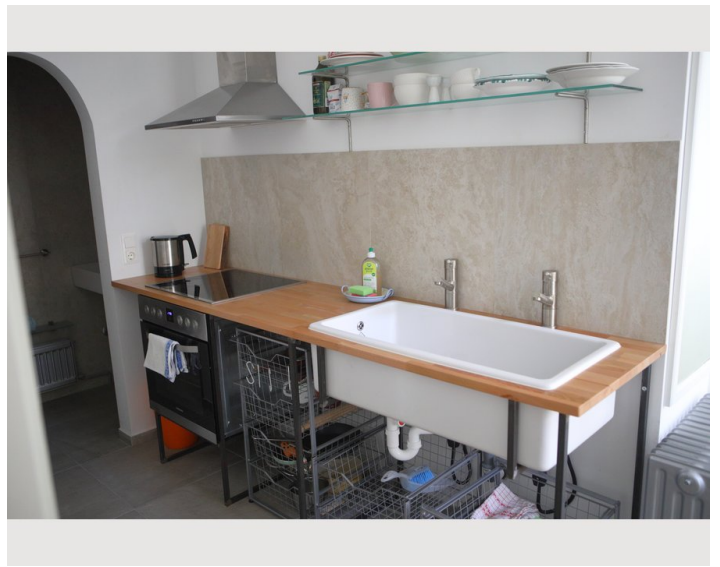
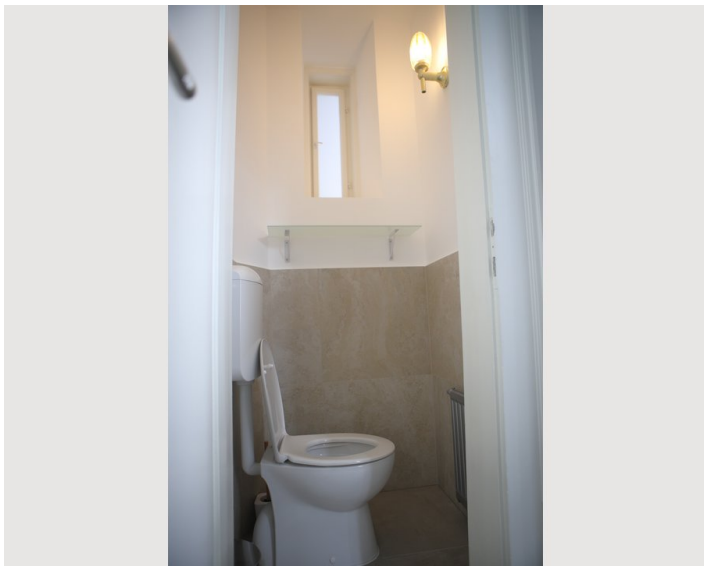
### Picture gallery



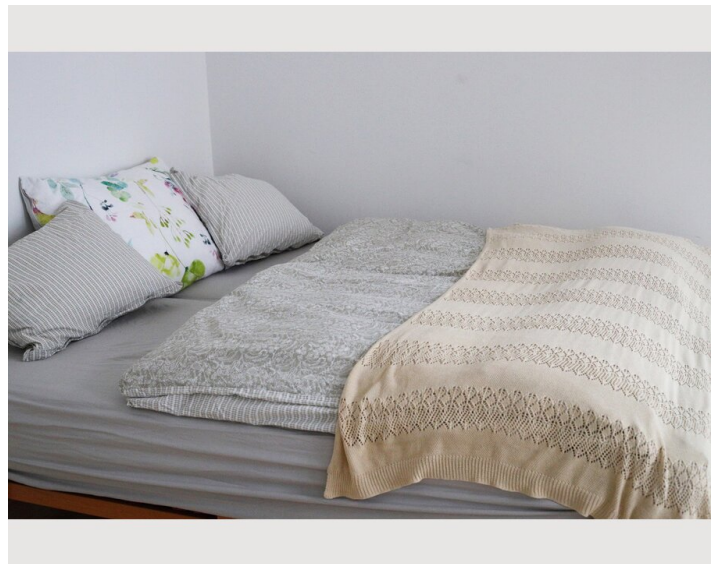
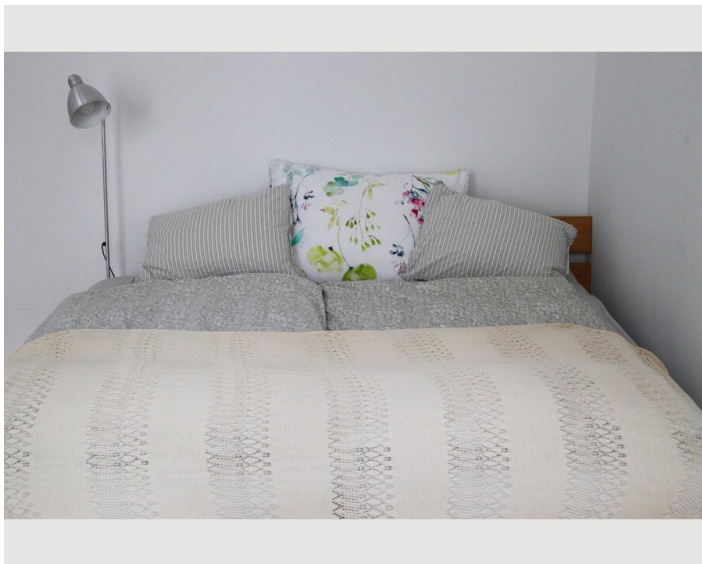













### Infrastructure

 opposite

 10 Min.

 7 Min.

 30 Min.

 2 Min.

Opposite the apartment building there is a supermarket. More supermarkets are within 5 Min. walking distance. The main train station is located within 7 Min. walking distance from the apartment. From the main station there are possibilities of public means of transport to the Vienna airport (approx. 30 Mins) Underground station within 5 Min. Walking distance, bus station within 2 Min. walking distance. You can reach the city center with public means of transport within 10-15 Mins. There is a wonderful Park around the corner where you can go jogging or just go for a walk.

## Location

