



2 ROOM APARTMENT, 5020 SALZBURG

## Gem in the heart of Salzburg

Object number: WPLK1

[View and rent online](#)

<b>Period</b>	27/05/ - 27/06/2026
<b>Number of persons</b>	2
<b>Total incl. VAT.</b>	€ 2.744,52
Security deposit	€ 2.000,00

3rd floor, 2 Room appartement with balcony and shared use of the garden Bedroom with 180 double bed TV and walk in closet Bathroom with bathtub and washing machine Well equiped kitchen with dishwasher, coffee machine, kettle WiFi, cable TV



### Living space

65m<sup>2</sup>



### Maximum occupancy

2 Persons



### Complete accommodation <sup>?</sup>

1 Private bathroom 1 Separated bedroom



### 3. floor



### Check-in

15:00 - 17:00 Clock



### Check-out

06:30 - 12:00 Clock

## Sleeping options

### Sleeping room



1x Double bed (1,80 m x 2 m)

## Description of accommodation

2 room apartment in the 3rd floor in the heart of Salzburgs city center

Bedroom with double bed 180cm TV and walk in closet

Livingroom with couch lounge TV and dining table

Bathroom with bathtub and washing machine, toilet extra

Kitchen with balcony with view to the famous Sebastien cemetery, equipped with dishwasher, coffee maker, kettle, cutlery and plates

Wardrobe, cellar compartment, shared use of the garden, bike to get around

WiFi and cable TV

Linzergasse 2 min by foot  
Busstop at the doorstep

Getreidegasse, Mirabellgarden, famous sites, supermarket, pharmacy everything in walking distance

Small cosy coffee on the ground floor

## Equipment & Features



### Basic equipment

- Balcony
- Internet/Wifi
- Private washing machine
- Towels
- Vacuum cleaner
- Garden sharing
- TV
- Bedclothes
- Private toilet
- Cleaning utensils



### First supply

- Toilet paper
- Soap
- shampoo
- Nespresso capsules



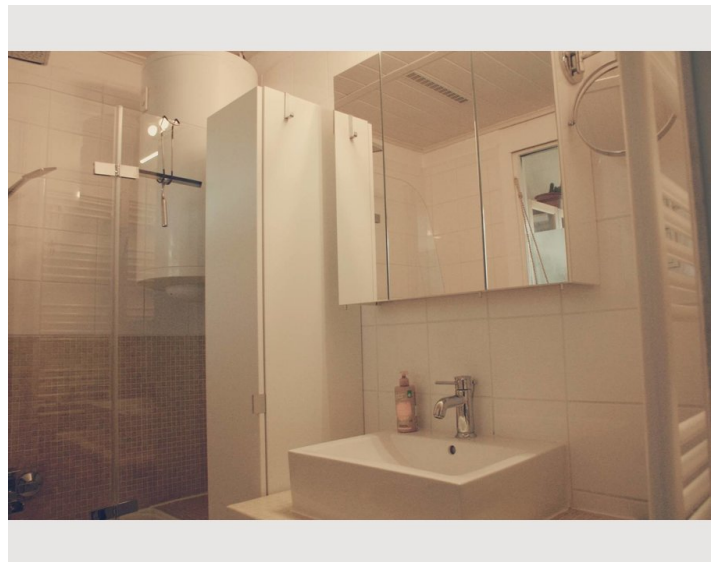
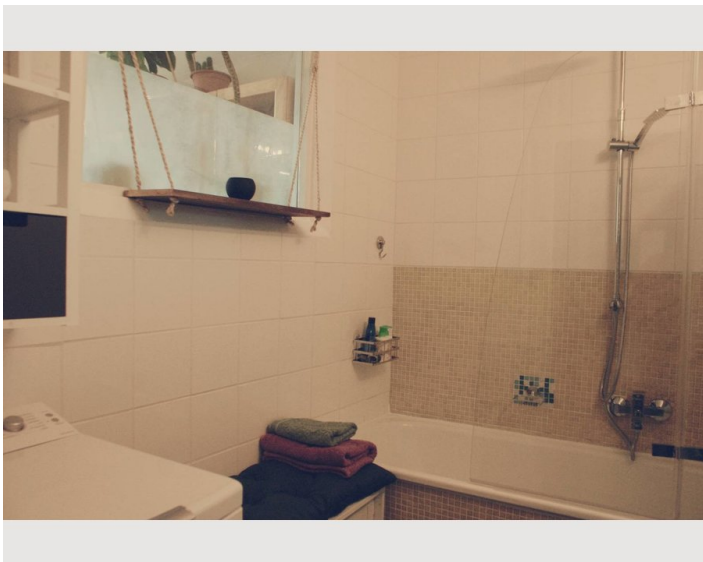
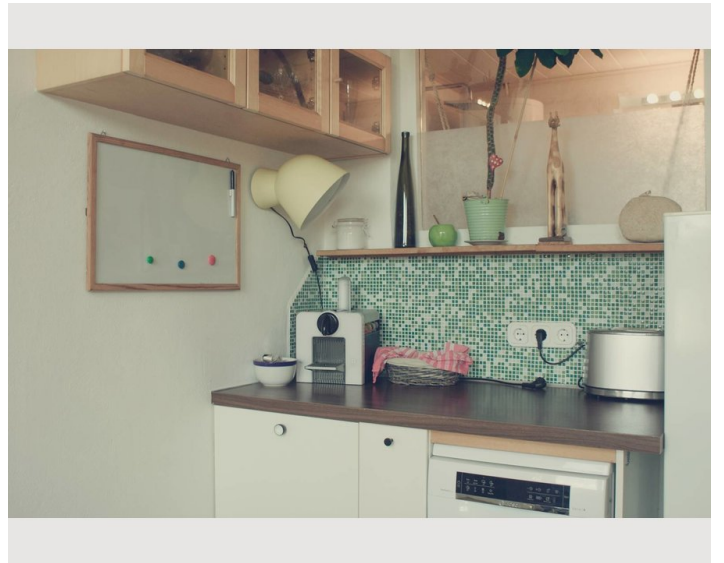
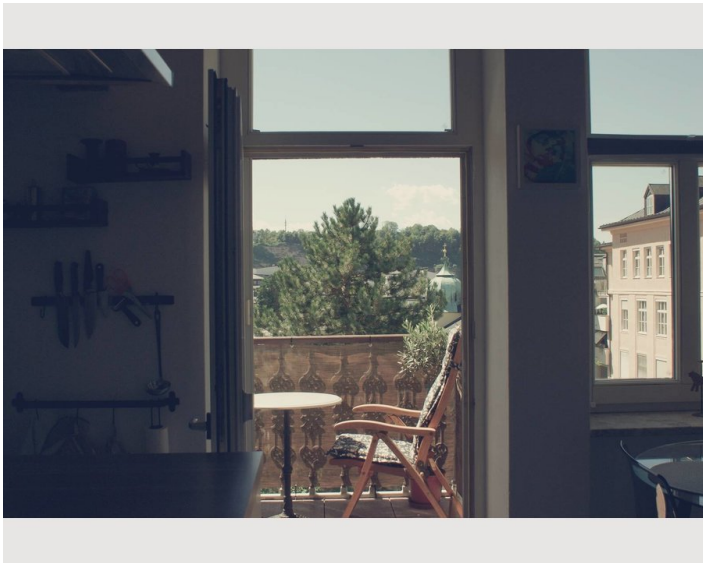
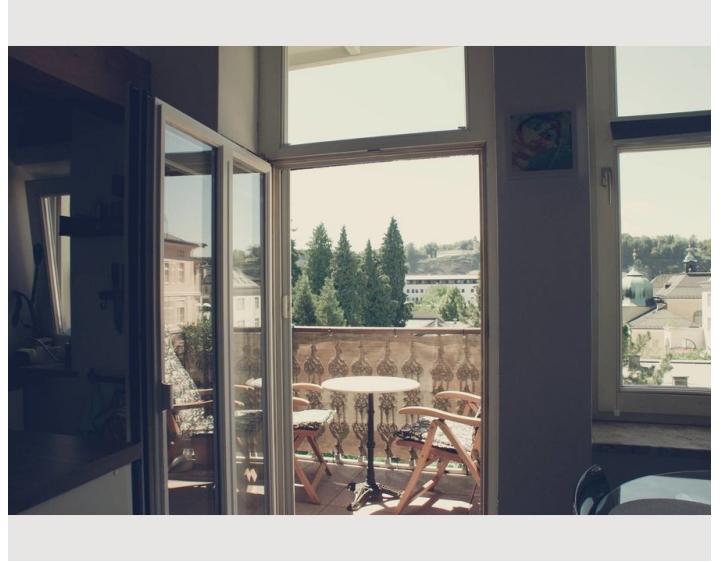
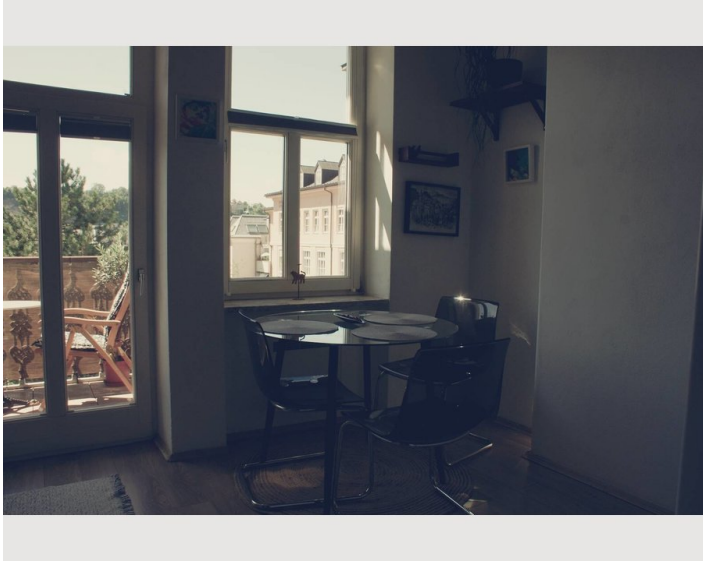
### Kitchen

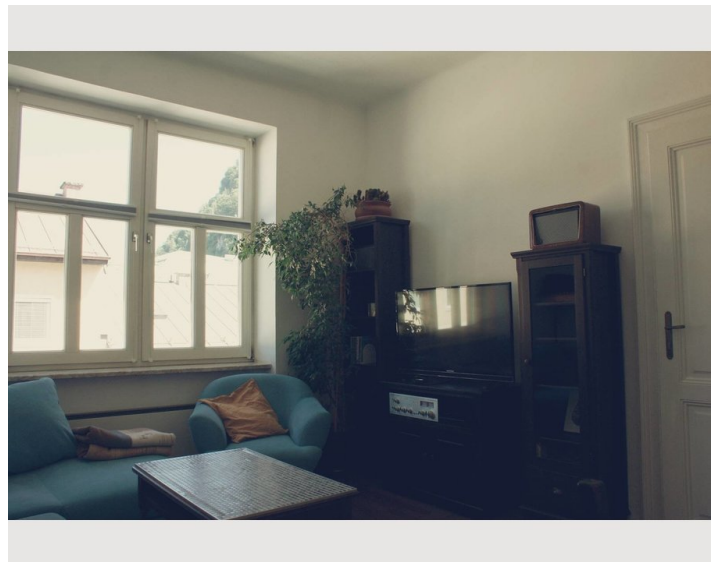
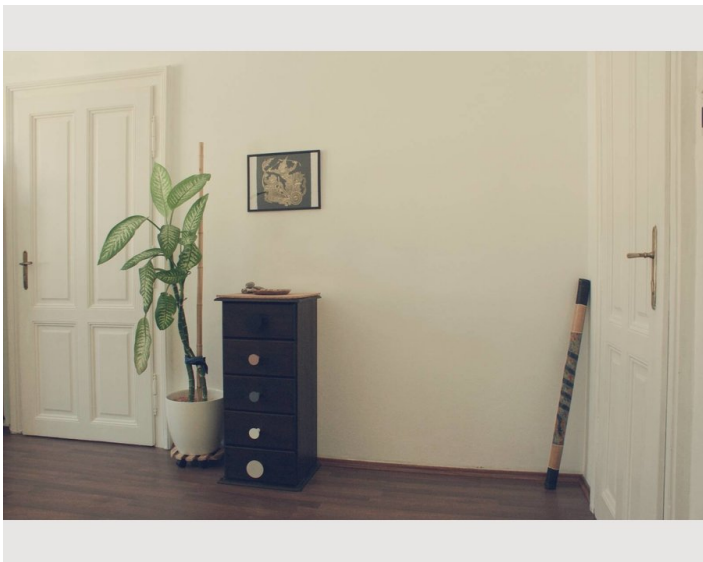
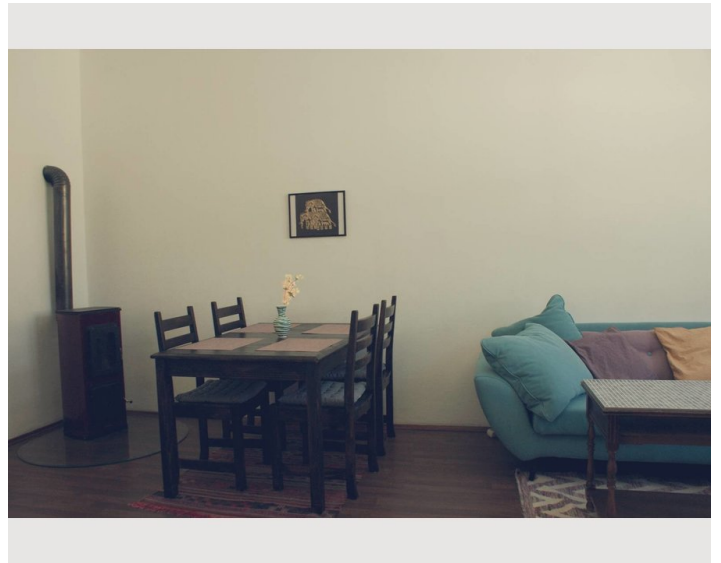
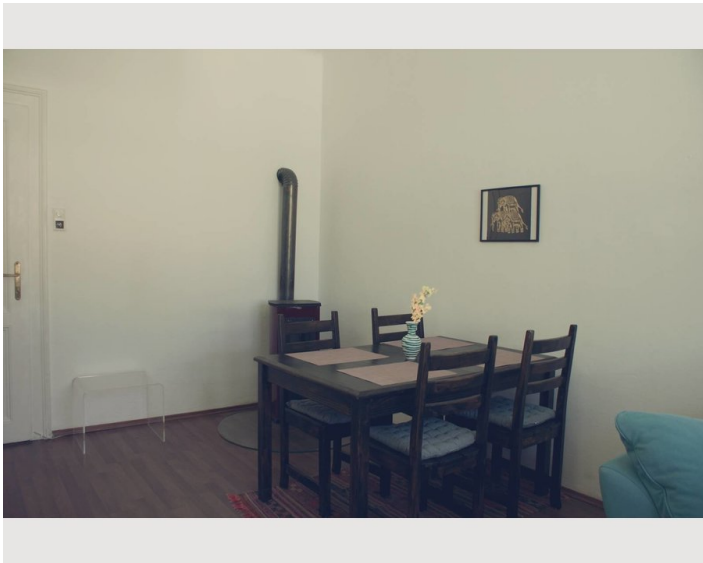
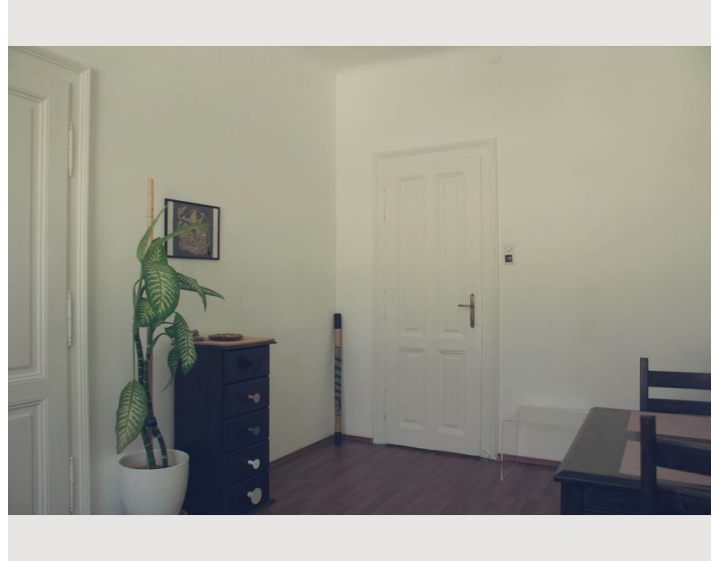
- Private kitchen
- Glasses/Tableware
- Dishwasher
- Cooking utensils
- Espresso machine

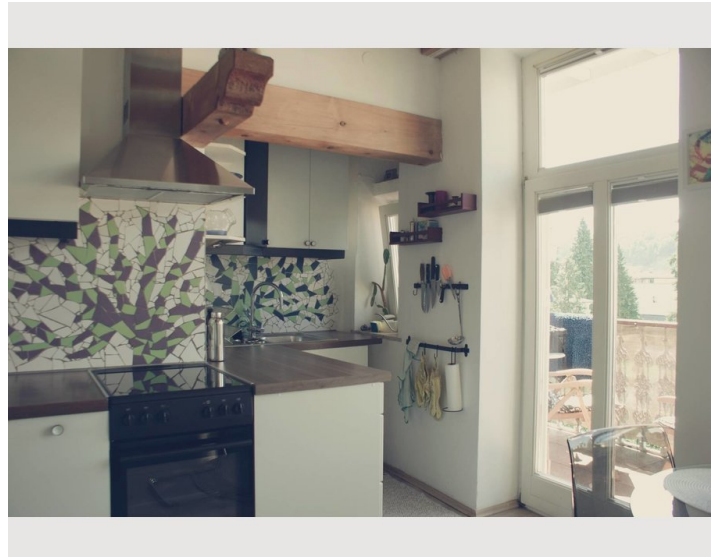
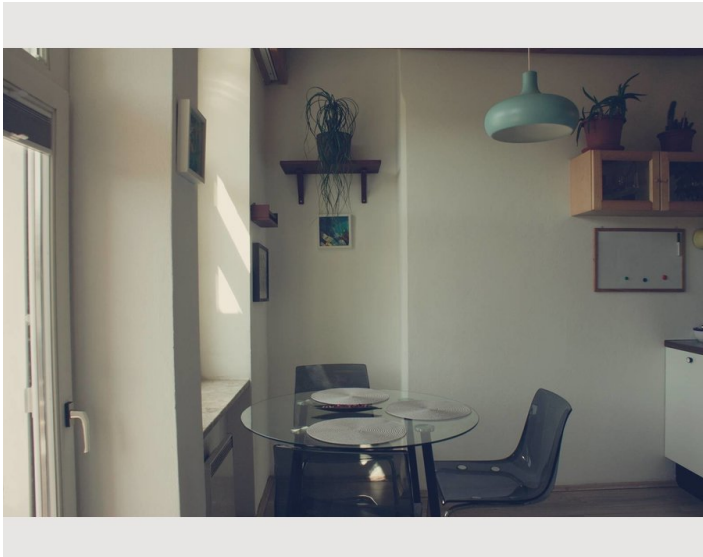
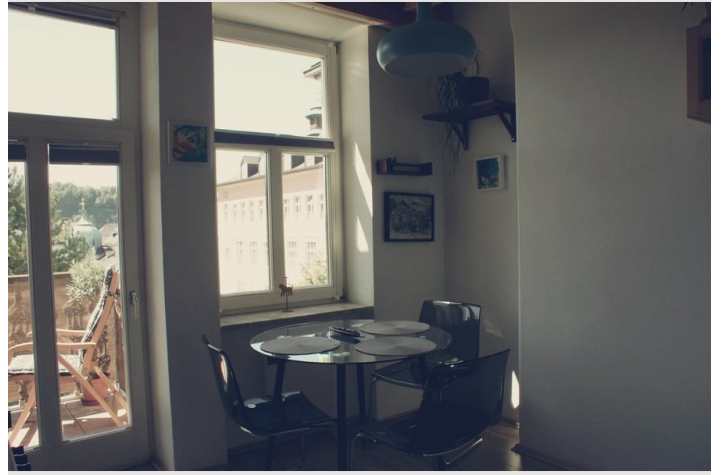
## Informations

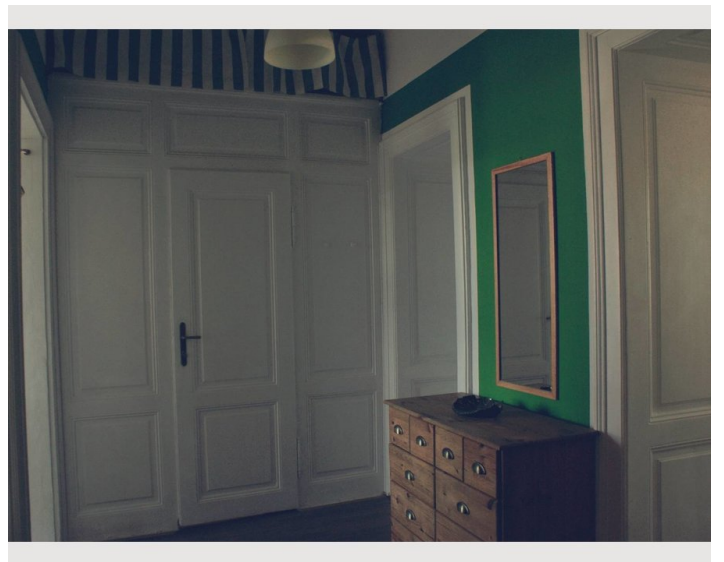
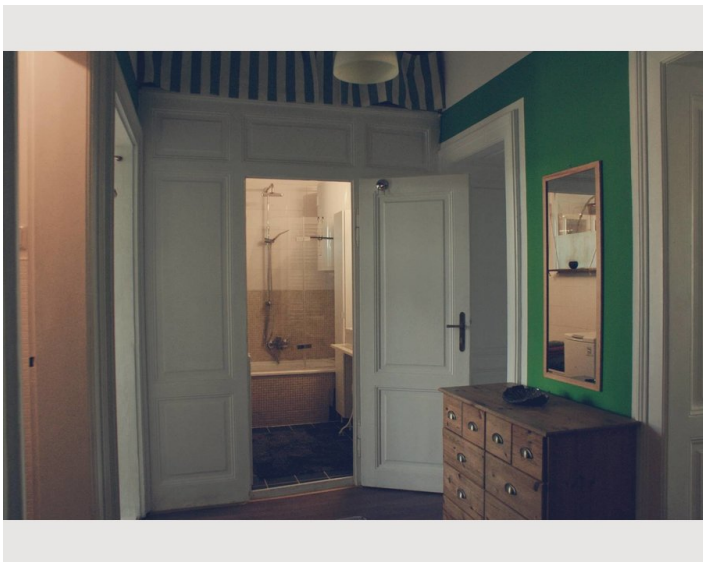
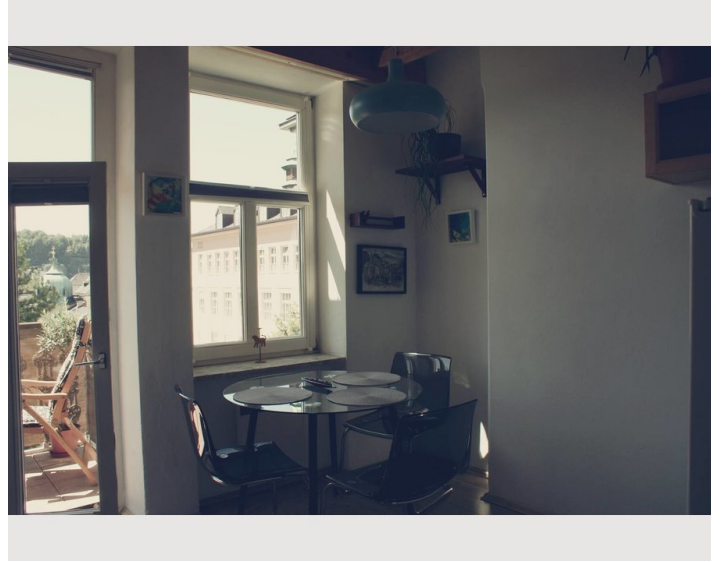
- Smoking not allowed
- Private entrance
- Bicycle room free of charge
- Short-term parking zone subject to a charge
- Pets on request

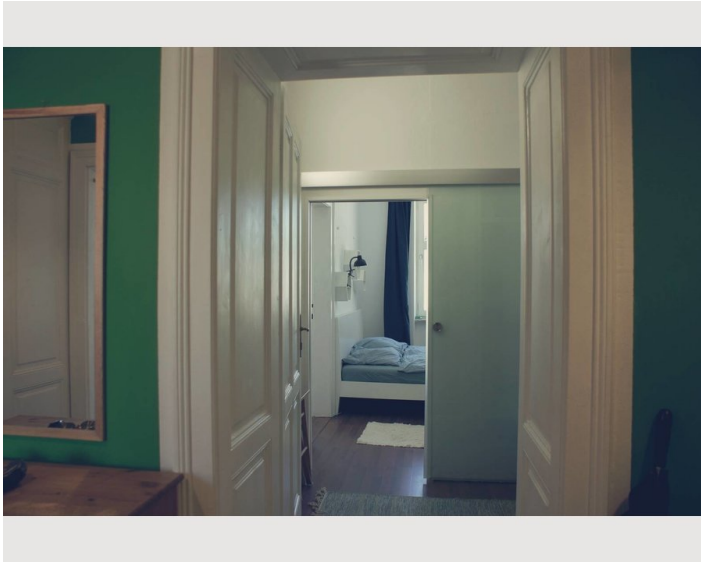
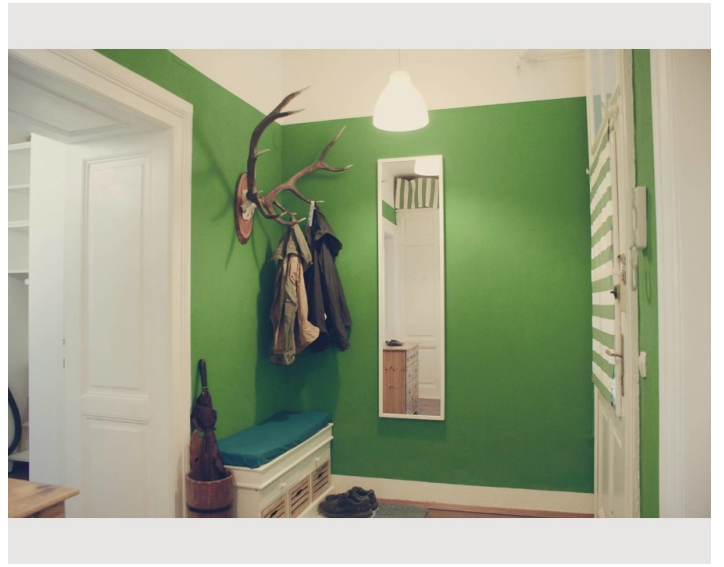
## Picture gallery











## Infrastructure

📍 5 min by foot

🚶 15 min by foot

🚏 1min by foot

🚶 3 min by Foot

---

Busstop at the doorstep

Supermarket, drugstore, pharmacy, bakery 2 minutes walking distance

Trainstation 15 min by foot

Linzergasse 2 min by foot

Getreidegasse 11 min by foot

Mirabellgarden 6 min by foot

Bike Freeware to use

## Location

