



STUDIO APARTMENT, 4850 VÖCKLABRUCK

Loft in Vorstadt Vöcklabruck

Object number: SDFS1

[View and rent online](#)

Period	14/06/ - 14/07/2025
Number of persons	2
Total incl. VAT.	€ 2.051,10
Security deposit	€ 1.600,00

The wonderful 100sqm loft is located at the entrance to the city. The town square and a running track on the river are only a 1-2 minute walk away. The Attersee and the Traunsee are only about 10-15 minutes away by car and invite you to swim and hike



Living space

97m²



Maximum occupancy

4 Persons



Complete accommodation [?]

1 private bathroom 2 Separated bedrooms



1. floor



Check-in

15:01 - 23:02 Clock



Check-out

06:02 - 11:01 Clock

Sleeping options

Bedroom 1



1x Double bed (1,80 m x 2 m)

Bedroom 2



1x Double bed (1,60 m x 2 m)

Descripton of accommodation

This spacious 100sqm loft apartment in the center of Vöcklabruck combines urban style with openness. The open floor plan seamlessly connects the eat-in kitchen with the spacious living area, which offers plenty of space for social evenings. The many windows let in daylight and the high ceilings and a bedroom on the gallery complete the picture. The central location allows for easy access to all of the city's amenities.

Equipment features



Basic equipment

- Internet/Wifi
- Private washing machine
- Towels
- Garage
- Vacuum cleaner
- Hairdryer
- TV
- Bedclothes
- Private toilet
- On the road without time limit without any cost
- Cleaning utensils



First supply

- Toilet paper



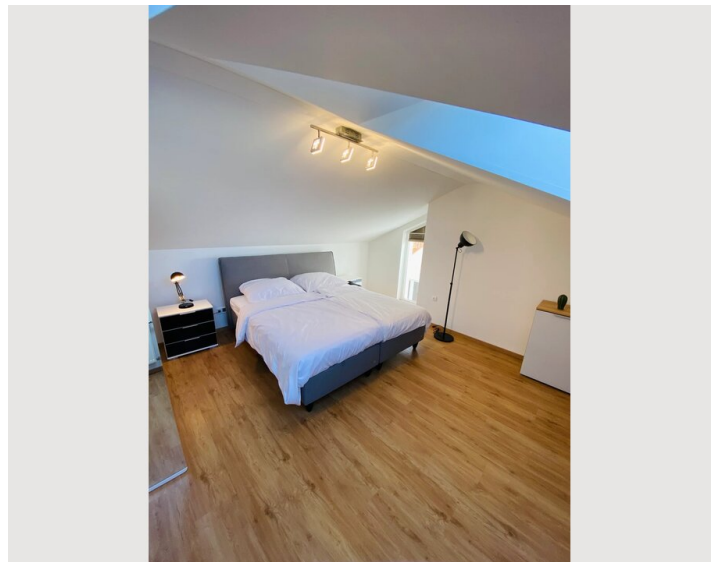
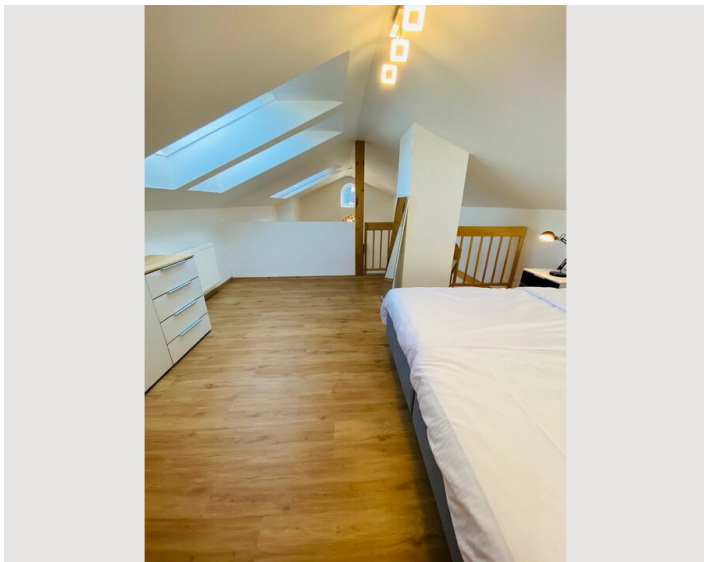
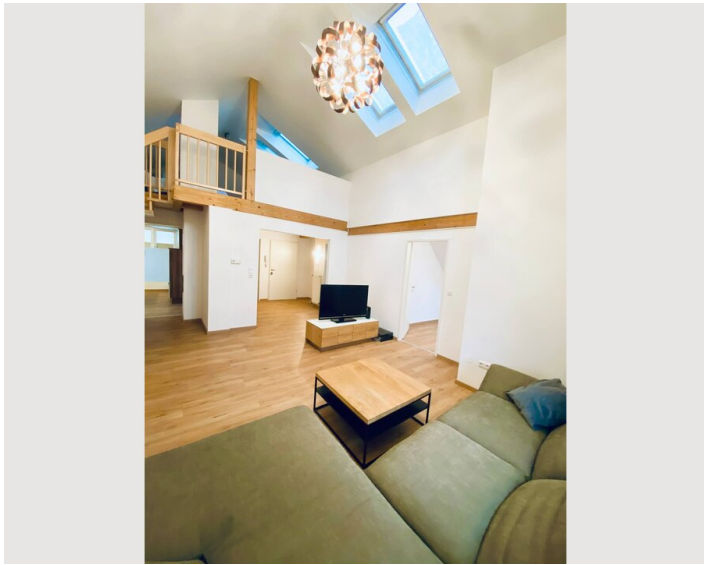
Kitchen

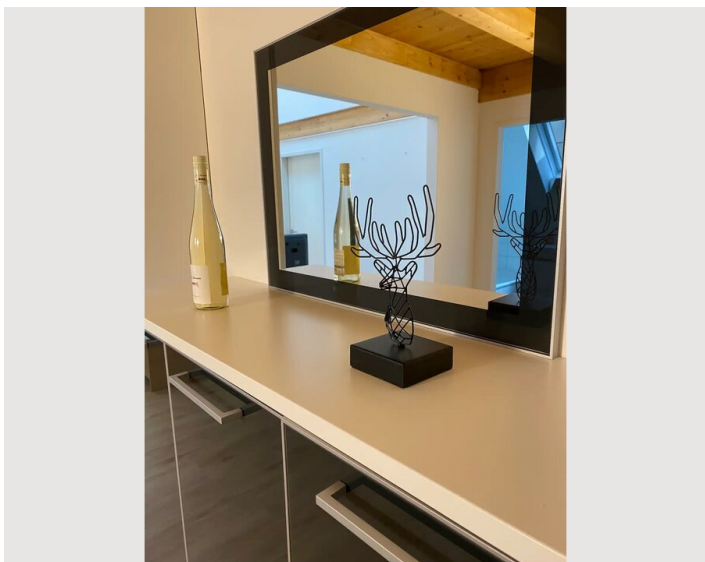
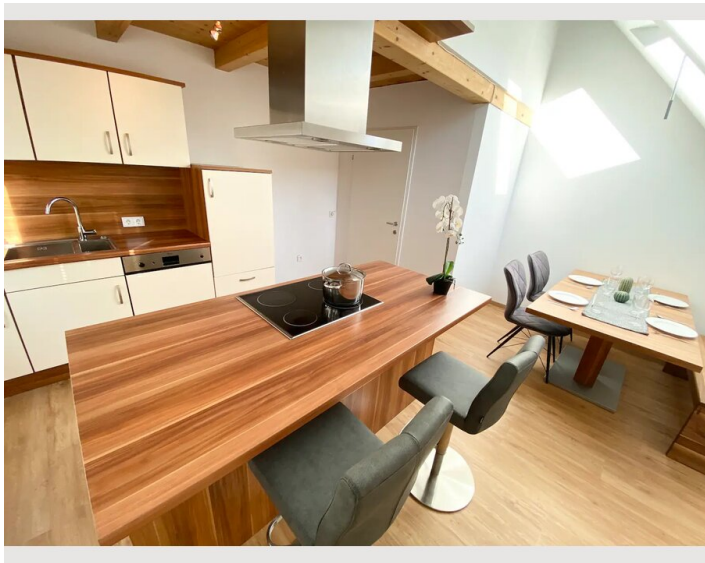
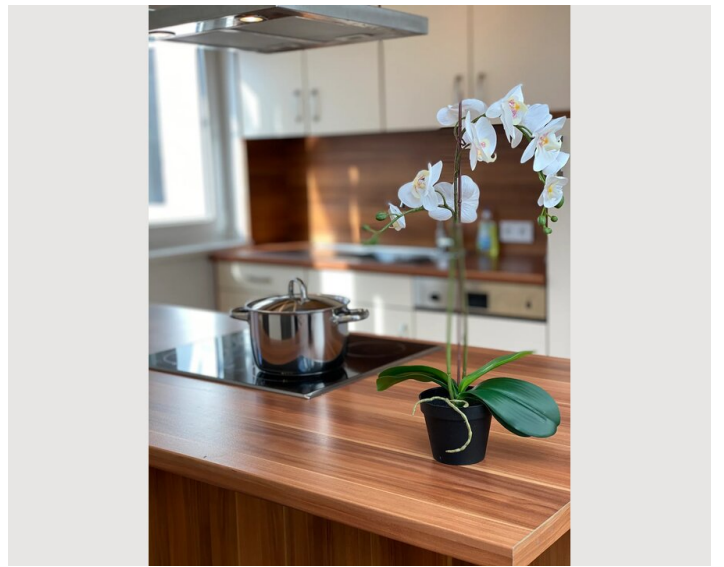
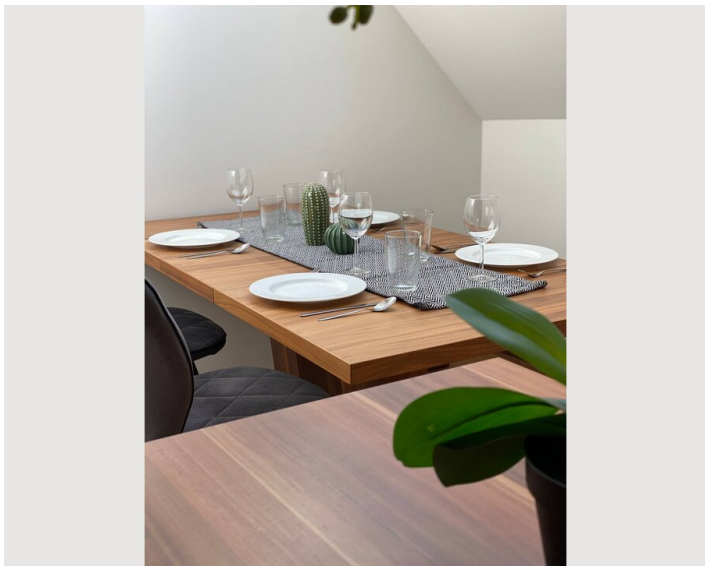
- Private kitchen
- Espresso machine
- Glasses/Tableware
- Dishwasher

Informations

- Suitable for children
- Pets on request
- Smoking not allowed

Picture gallery





Infrastructure



In front of the door



1 minute walking distance



5-7 minutes walking distance



3-5 minutes walking distance

The infrastructure surrounding Vöcklabruck's Vorstadt is characterized by its diversity and convenience. Numerous shops, cafes, and restaurants are within easy walking distance, offering a wide range of shopping and dining options. The public transportation connectivity is excellent, ensuring seamless exploration of the surroundings and swift access to the city center.

Location

