



3 ROOM APARTMENT, 1220 VIENNA

## V22-Apartments 2 bedrooms

Object number: V22-3Z

[View and rent online](#)

<b>Period</b>	02/05/ - 02/06/2026
<b>Number of persons</b>	2
<b>Total incl. VAT.</b>	€ 3.885,87
<b>Security deposit</b>	€ 2.800,00

The new and modernly furnished 2-bedroom apartment is located in a recently built high-rise building near Donau Zentrum shopping center and has a balcony/loggia featuring a seating area.



### Living space

77m<sup>2</sup>



### Maximum occupancy

4 Persons



### Complete accommodation <sup>?</sup>

1 Private bathroom 2 Separated bedrooms 1 Living-Sleepingroom



### 1. floor

Elevator available



### Check-in

13:00 - 23:59 Clock



### Check-out

00:01 - 11:00 Clock

## Sleeping options

### Bedroom 1



1x Double bed (1,80 m x 2 m)

### Bedroom 2



1x Double bed (1,60 m x 2 m)

### Living & Sleeping



1x Sofa bed (1 person)

## Descripton of accommodation

3D-tour of 2 sample apartment:

<https://my.matterport.com/show/?m=iWxqnH1exZV>

<https://my.matterport.com/show/?m=AaKs65cCeui>

The new and modernly furnished 2-bedroom apartment is located in a recently built high-rise building near Donau Zentrum shopping center and has a balcony/loggia featuring a seating area.

Fully and modernly furnished: fitted kitchen (Miele appliances!) including kitchen utensils and crockery, washing machine, bathroom with bathtub/walk-in shower, flat screen TV, high-speed Internet.

[Access to the pool and fitness room is only included with a minimum rental period of 3 months.]

The impressive, 19 m long rooftop pool (on the 33rd floor – only in summer) with a fascinating view of the city and wind-protected sun deck with numerous sunbathing areas invites you to swim every day from early in the morning at sunrise to late in the evening at sunset.

You enjoy the luxurious comfort of a private gym right in the building with a view of and direct access to the green plaza. The high-end equipment enables a variety of training options (strength/cardio) for personal fitness.

A well-equipped wellness area with sauna and relaxation room is available for a fee. Direct access to the community terrace offers the opportunity to get some fresh air and to ventilate sufficiently.

All amenities for daily needs such as a supermarket in the direct neighborhood and the Donau Zentrum shopping center are in the immediate vicinity.

The residential tower in the new VIENNA TWENTYTWO district offers excellent accessibility from all directions with its ideal transport location directly at the underground (U1 - Kagran), tram (lines 25 & 26) and bus station Kagran, opposite the Donau Zentrum and the Cineplexx and near the Old Danube. The immediate surroundings offer a wide range of opportunities for leisure and sport as well as local recreation and shopping.

## Equipment & Features



### Basic equipment

- Loggia
- TV
- Community washing machine
- Bedclothes
- Private toilet
- Vacuum cleaner
- Cleaning utensils
- Internet/Wifi
- Private washing machine
- Community dryer
- Towels
- Aircondition
- Iron & ironing board
- Hairdryer



### Pool

- Outdoor Pool



### Wellness

- Sauna
- Fitness room



### First supply

- Toilet paper
- Nespresso capsules
- Soap



### Kitchen

- Private kitchen
- Glasses/Tableware
- Dishwasher
- Cooking utensils
- Espresso machine

## Informations

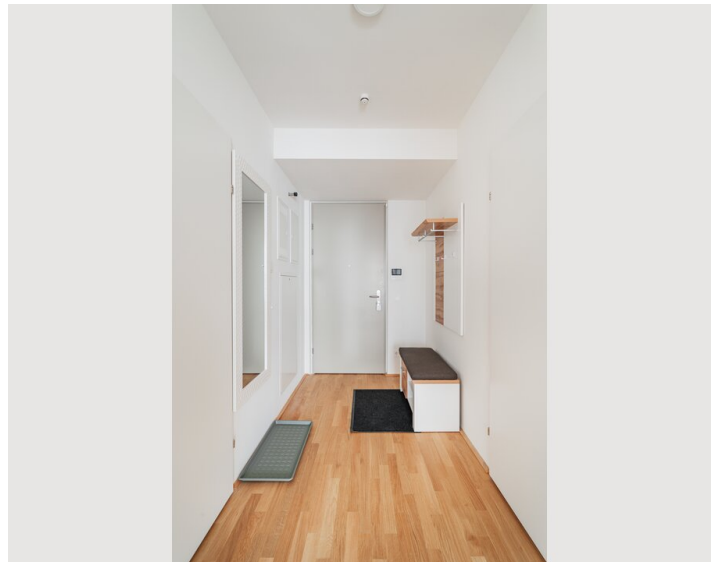
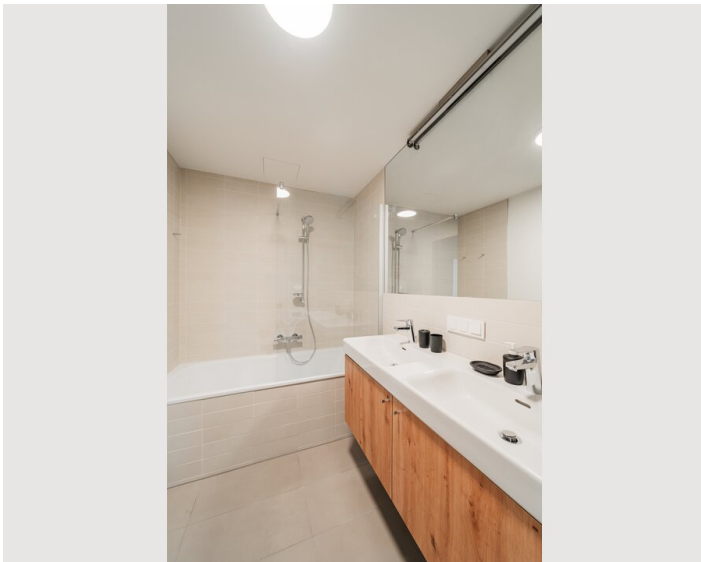
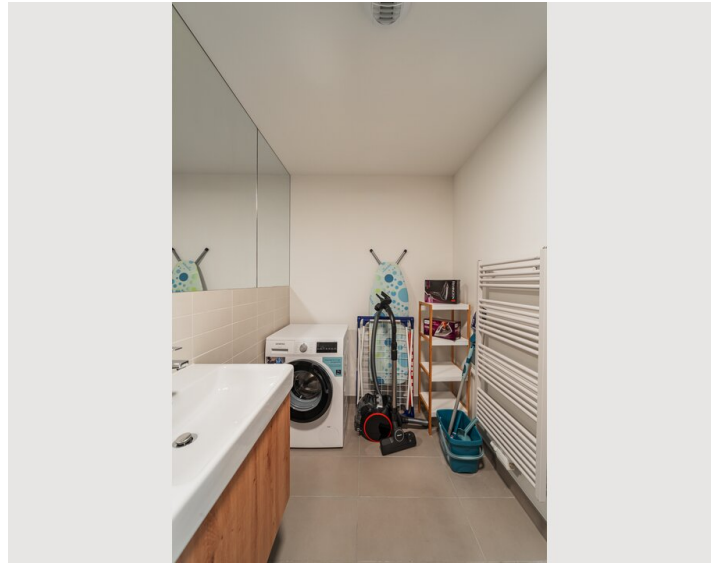
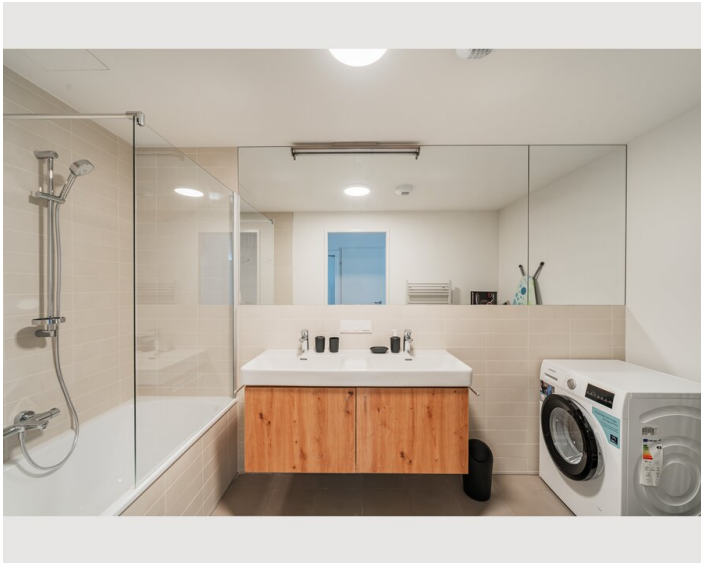
- Suitable for children
- Pets forbidden
- Bicycle room free of charge
- Short-term parking zone subject to a charge
- Regular cleaning at extra cost

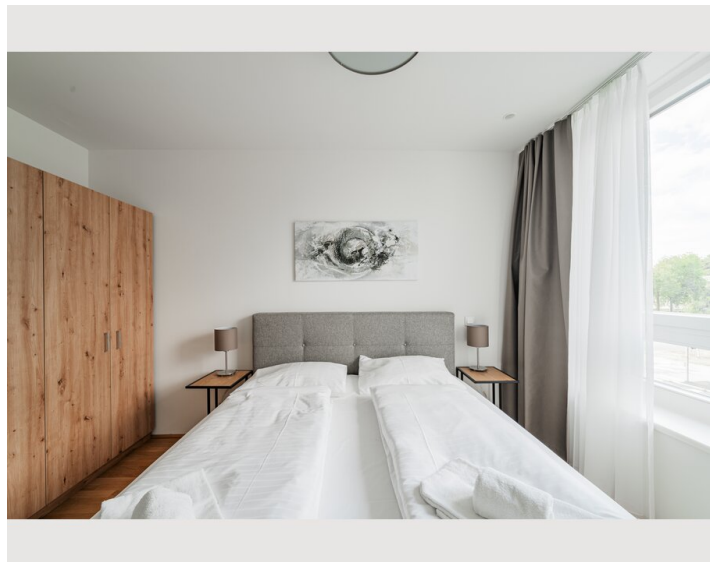
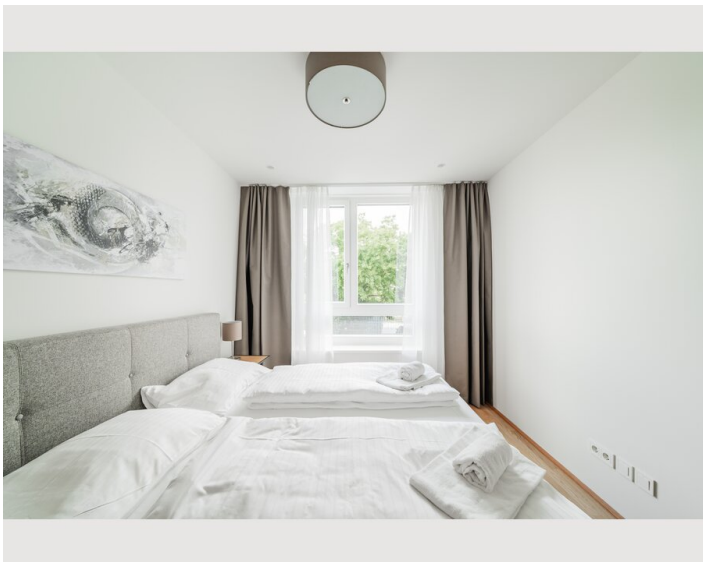
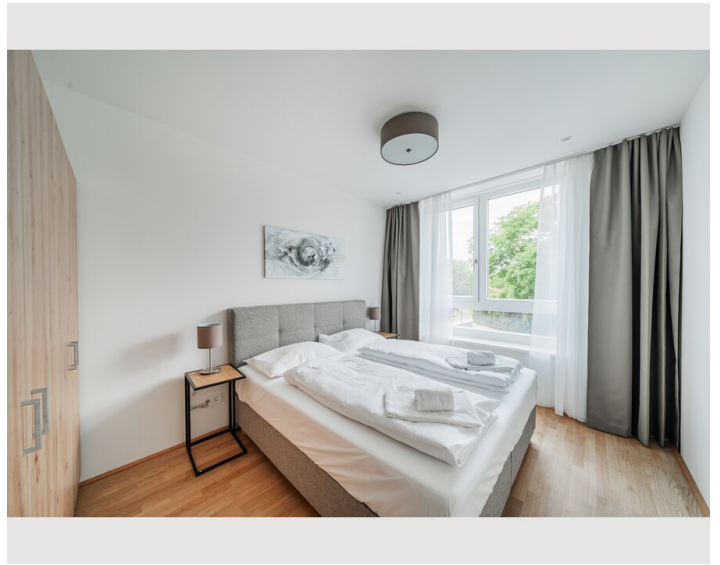
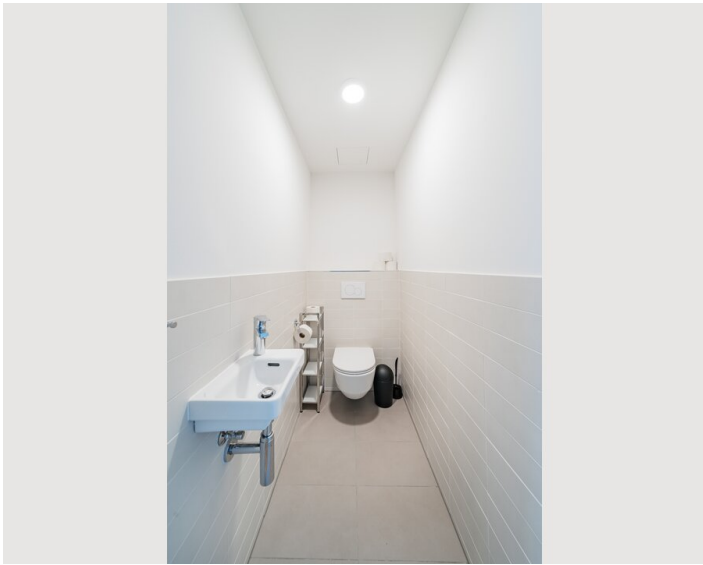
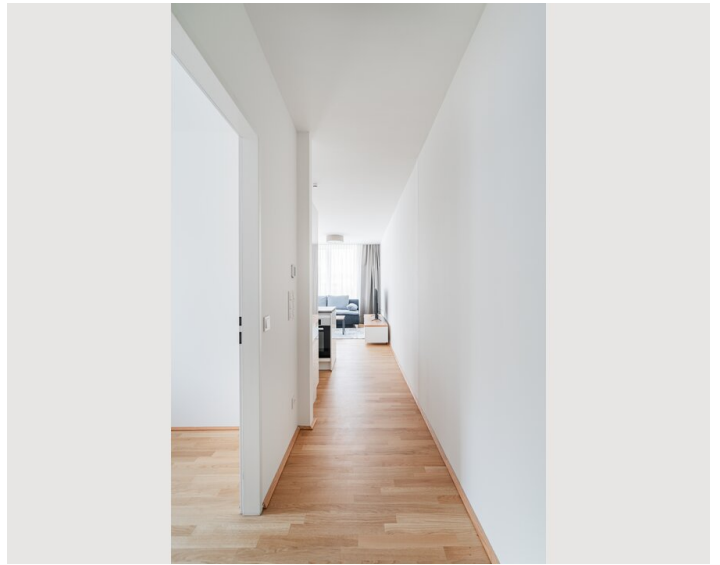
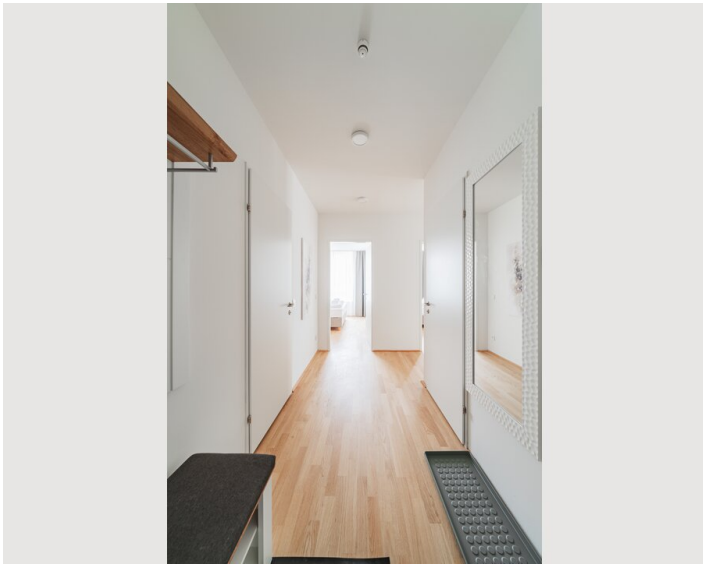
## Additional services

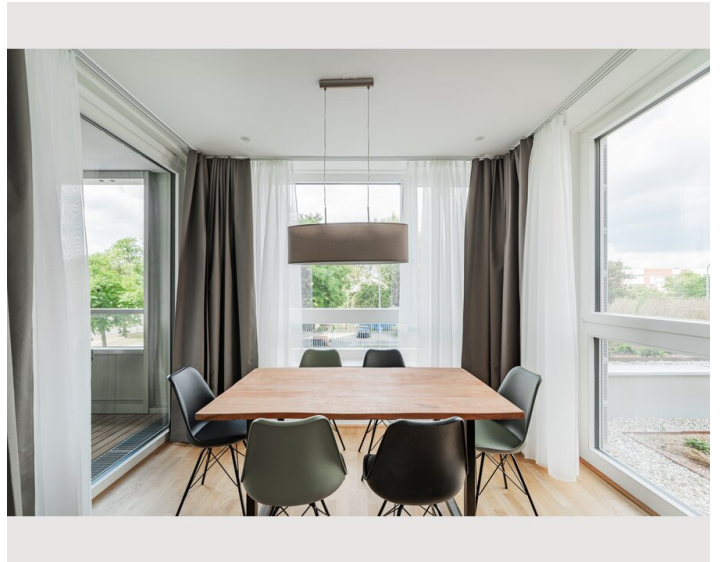
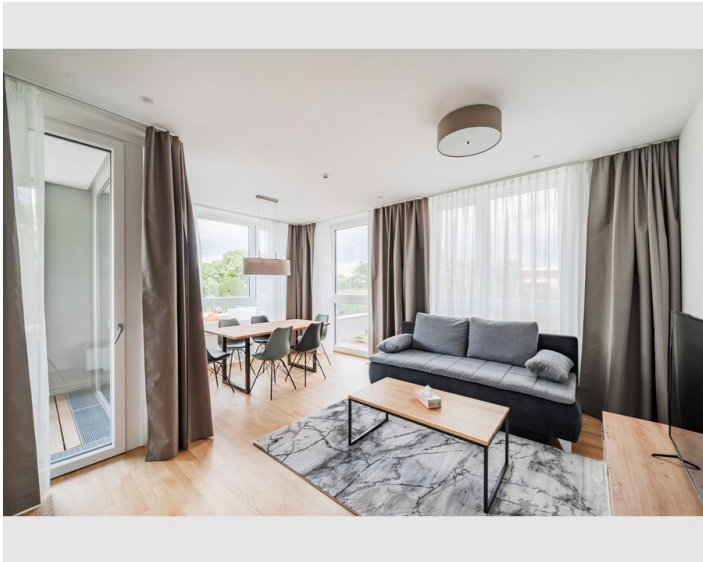
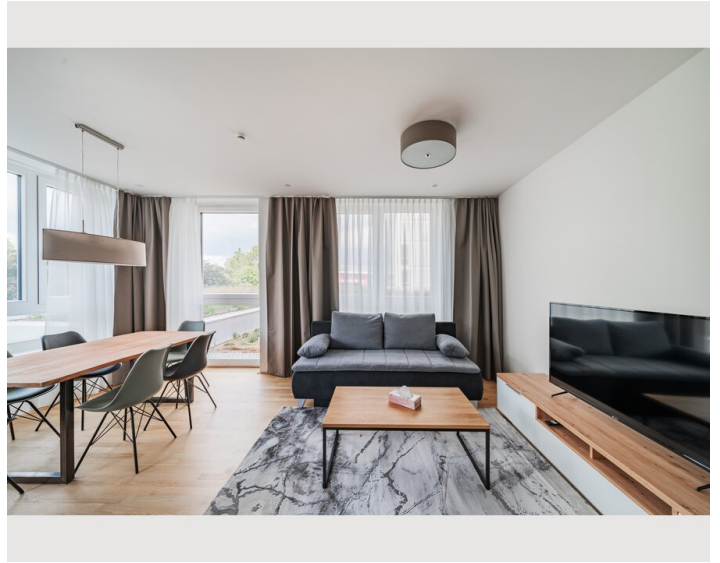
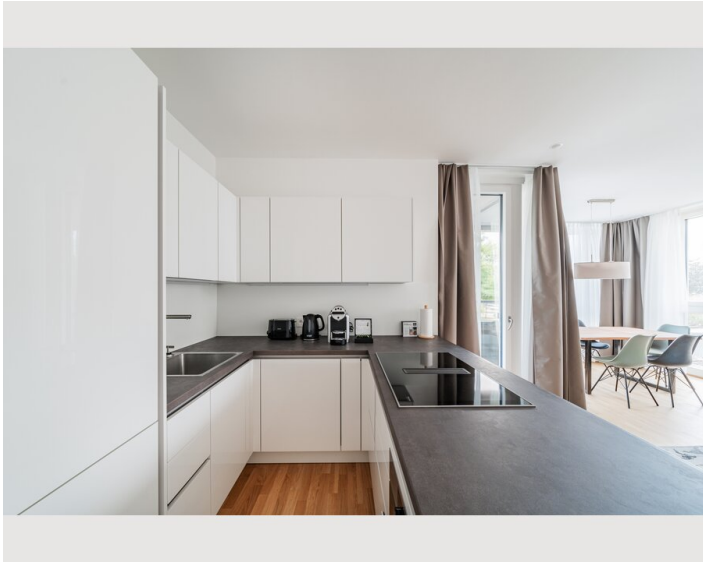
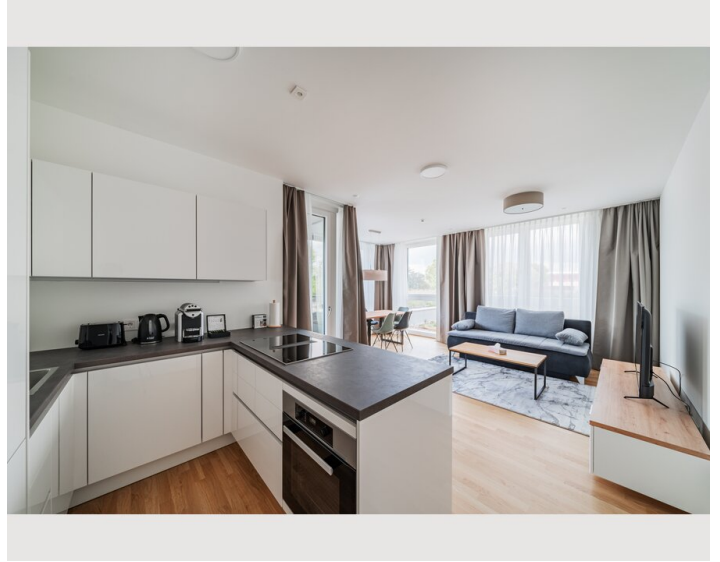
- Parking within house (€ 252,00)

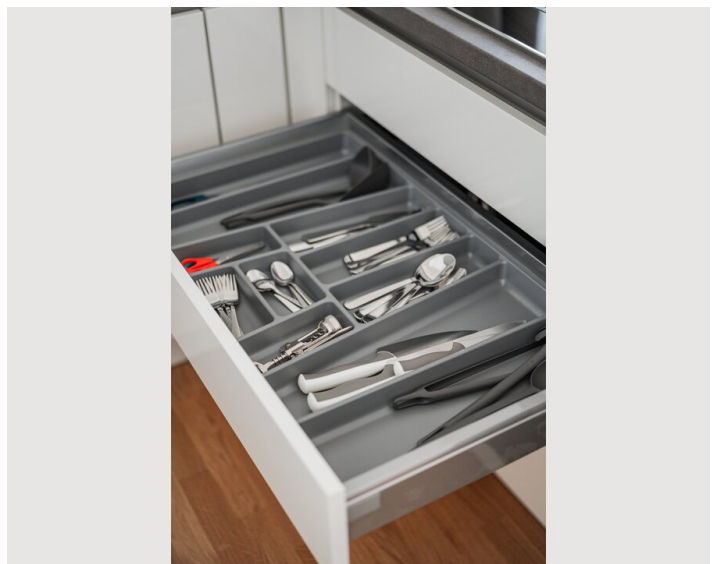
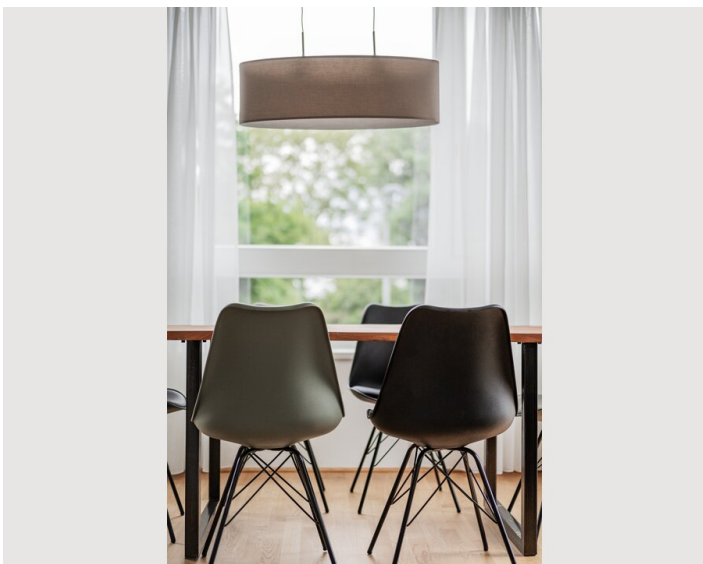
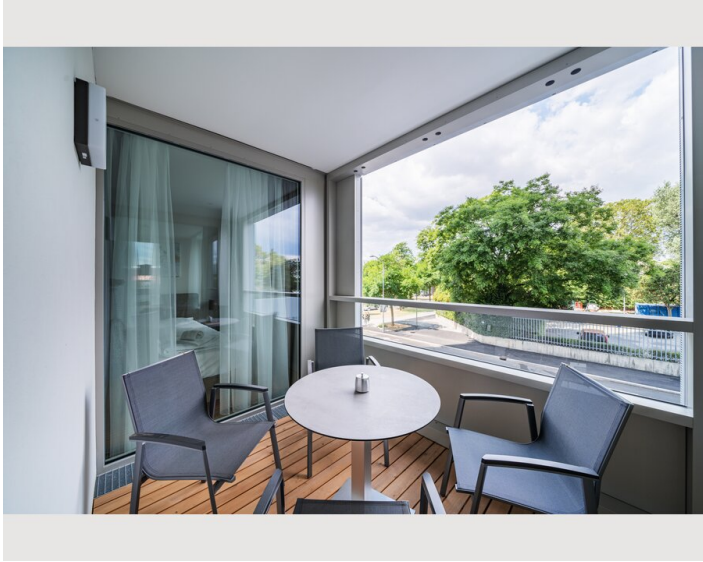
All prices are gross per month - billing is done directly with the lessor.

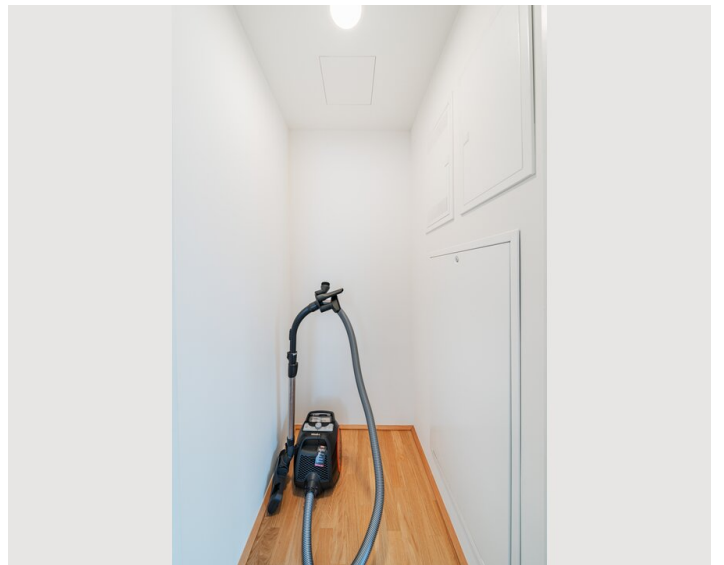
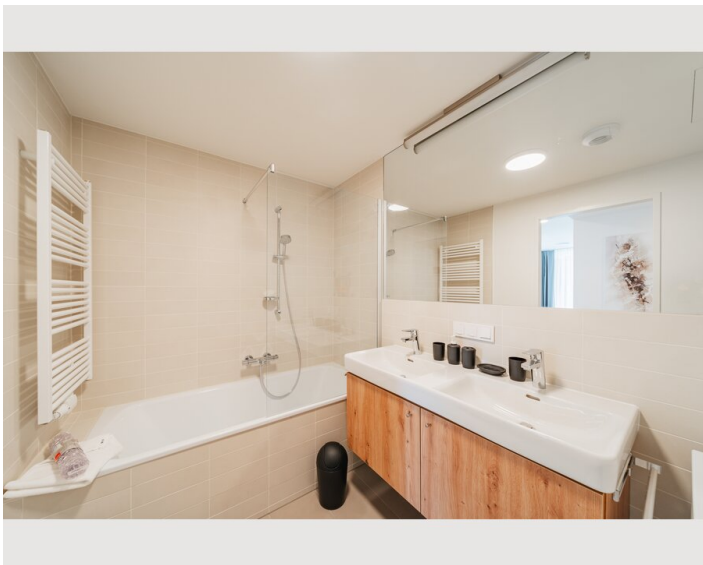
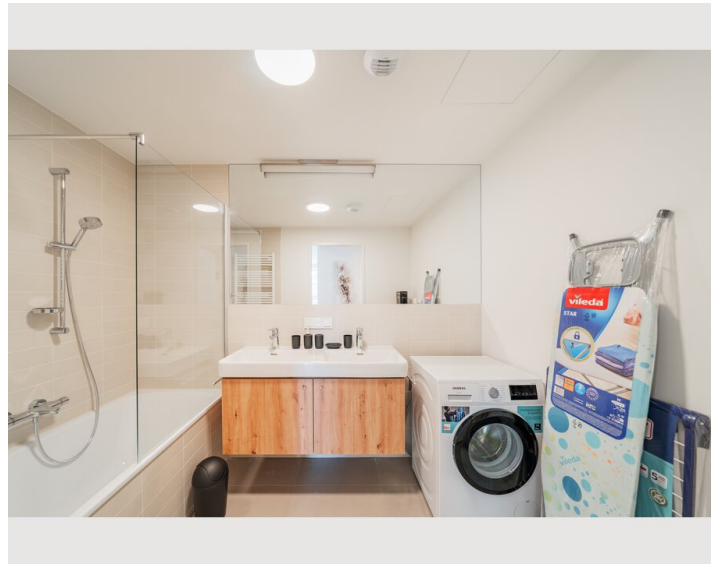
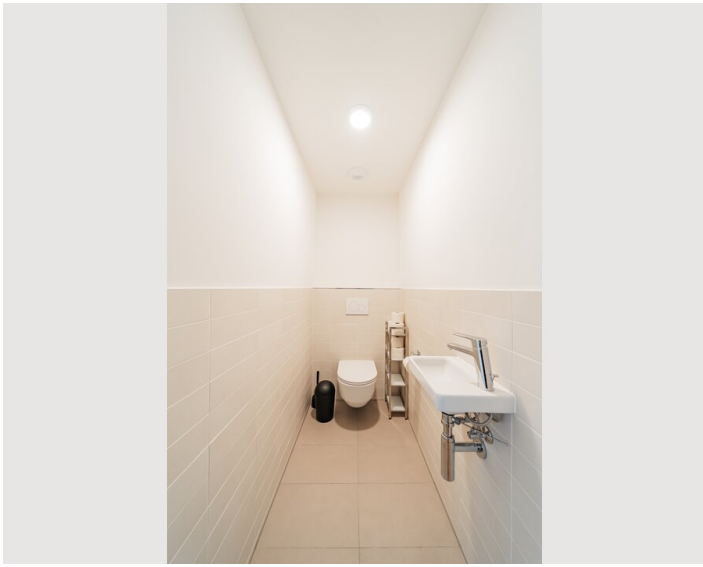
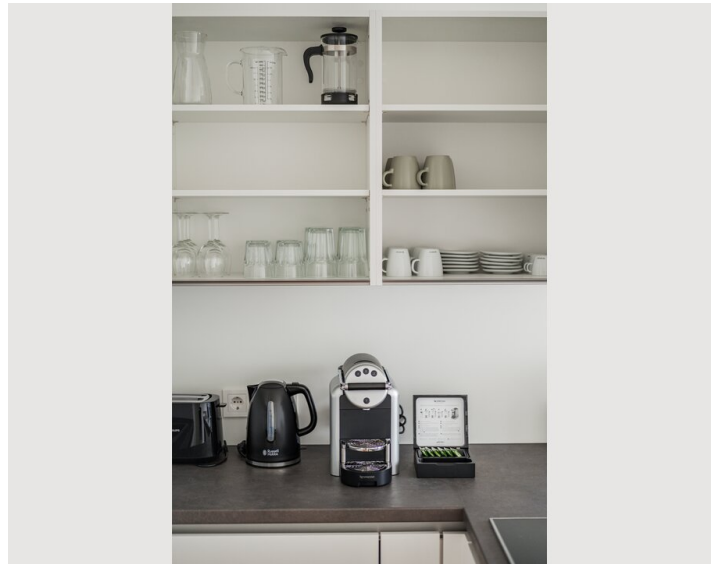
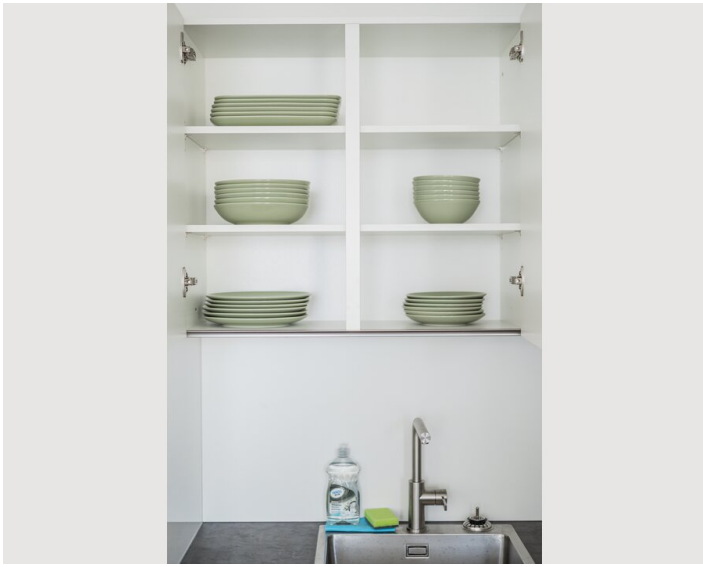
## Picture gallery

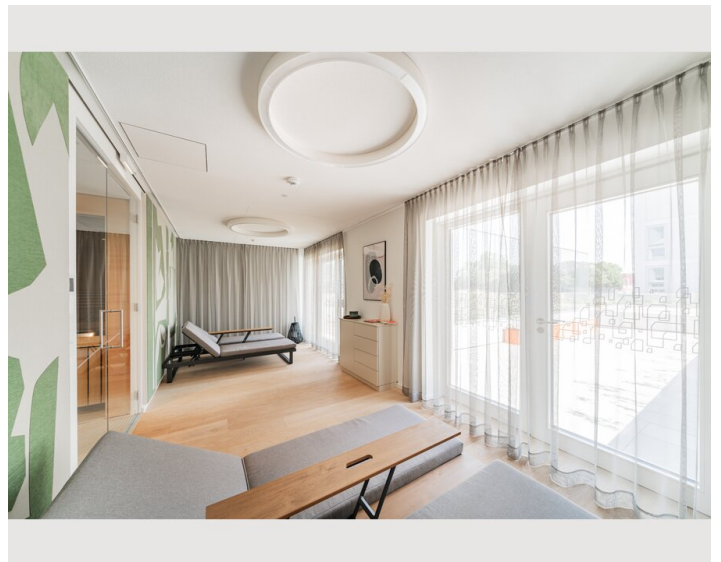
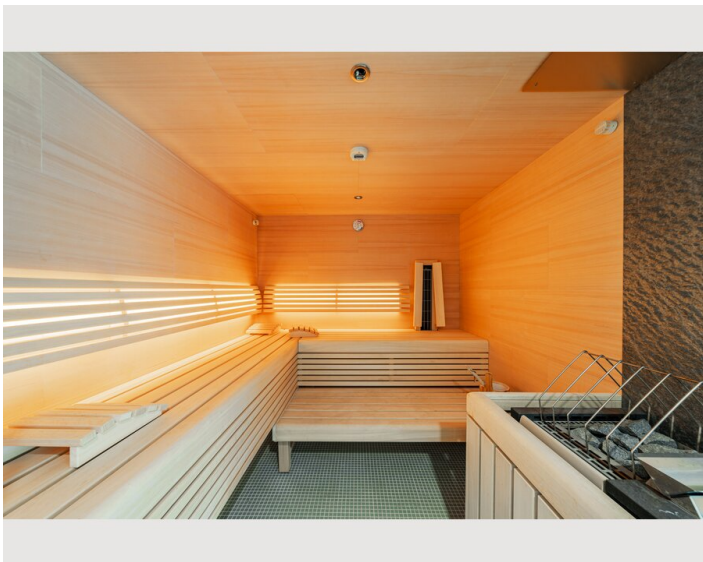
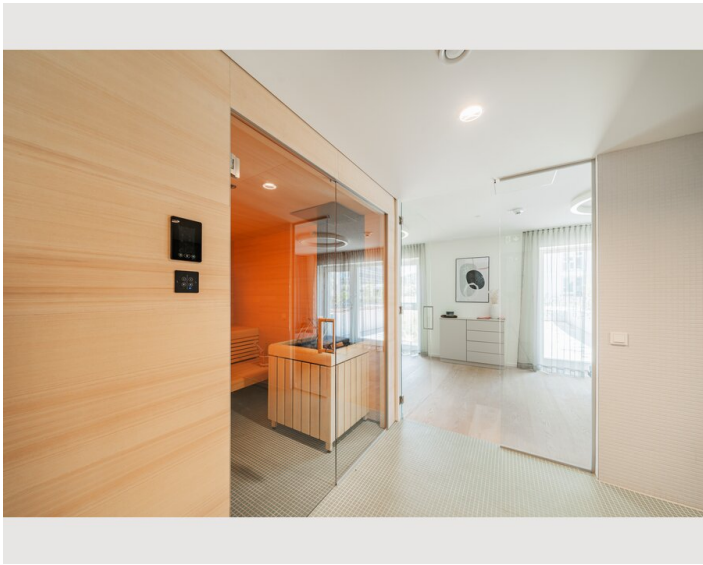
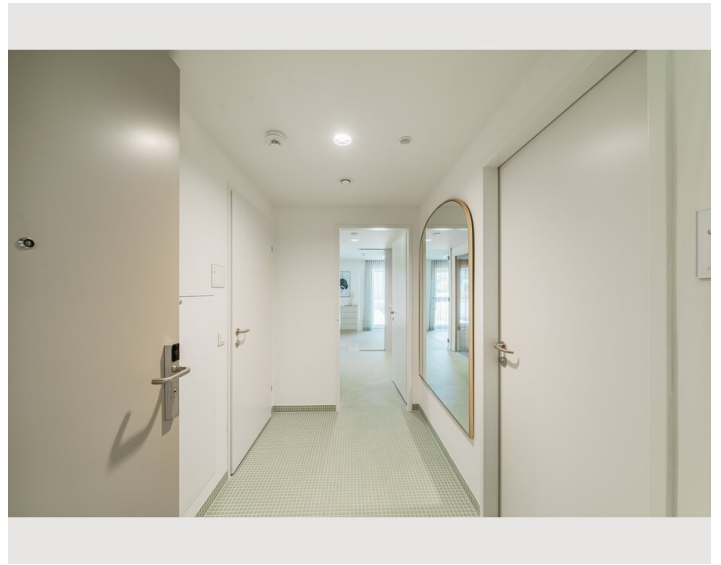
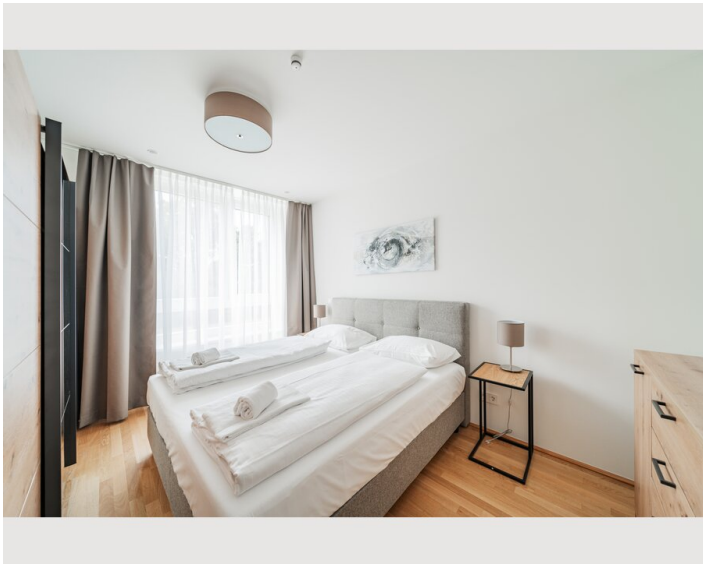


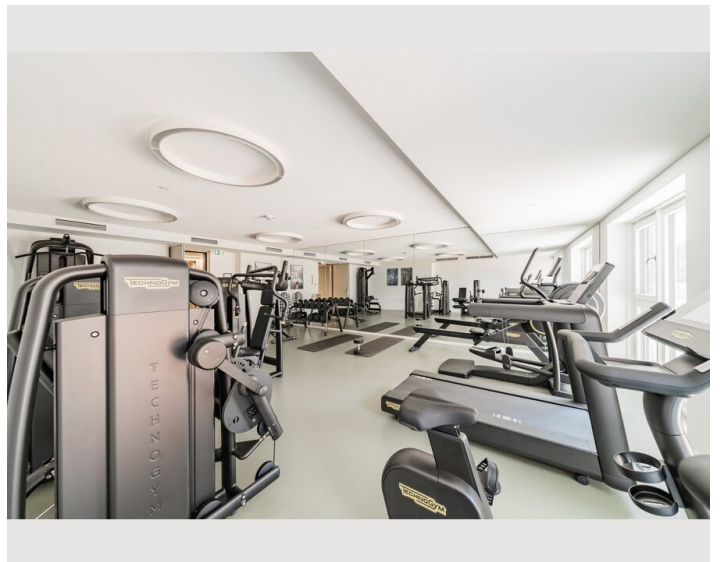
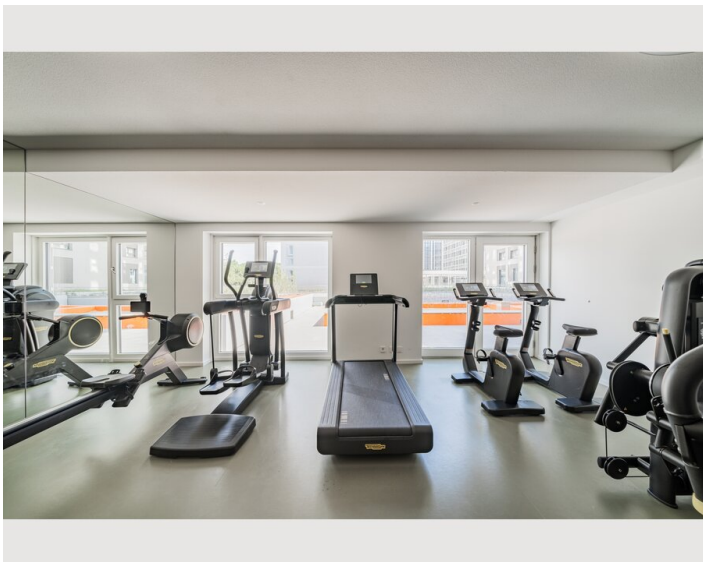
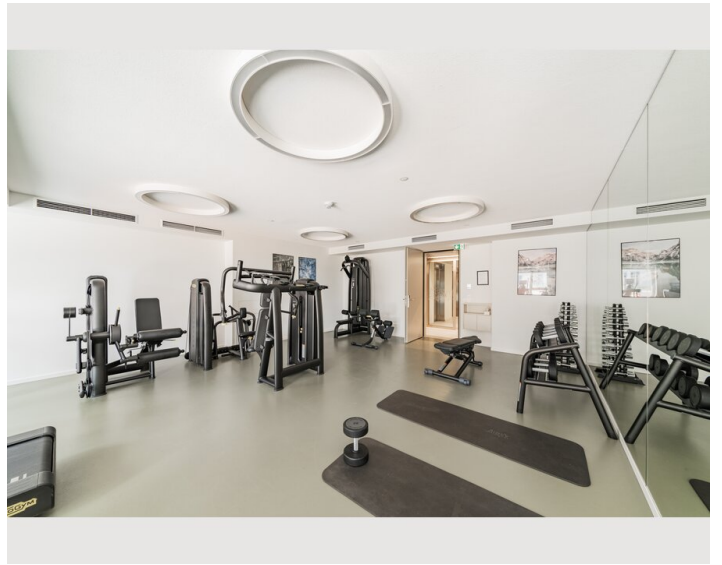
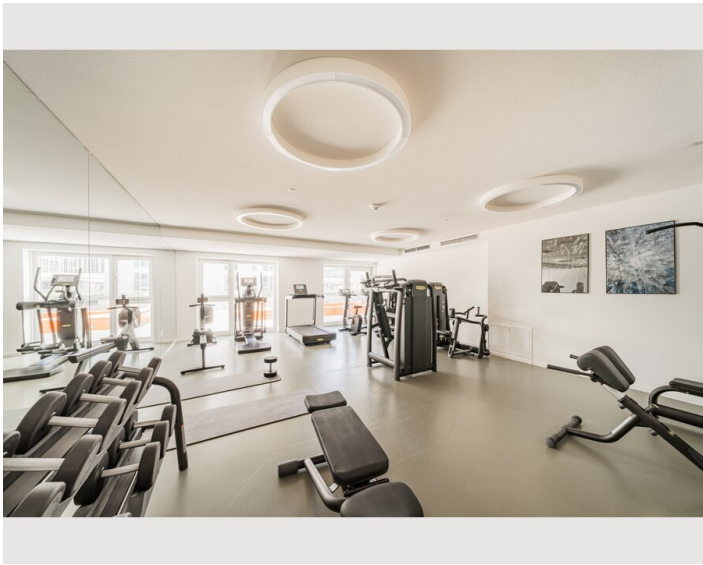
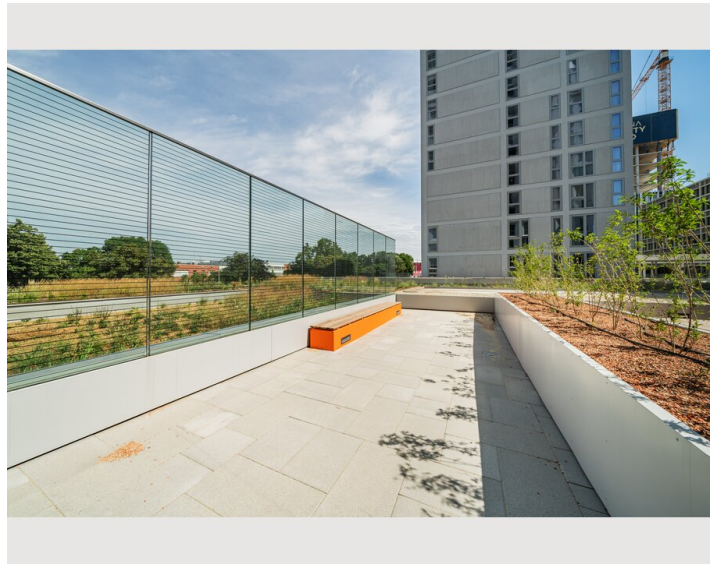
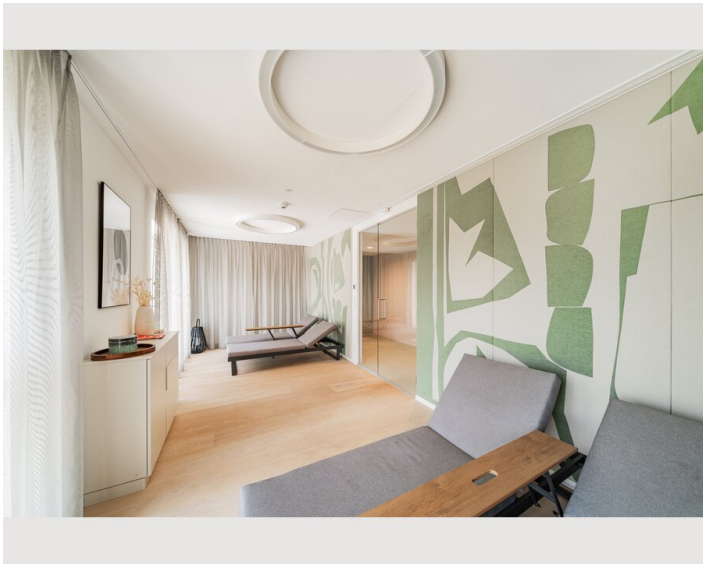


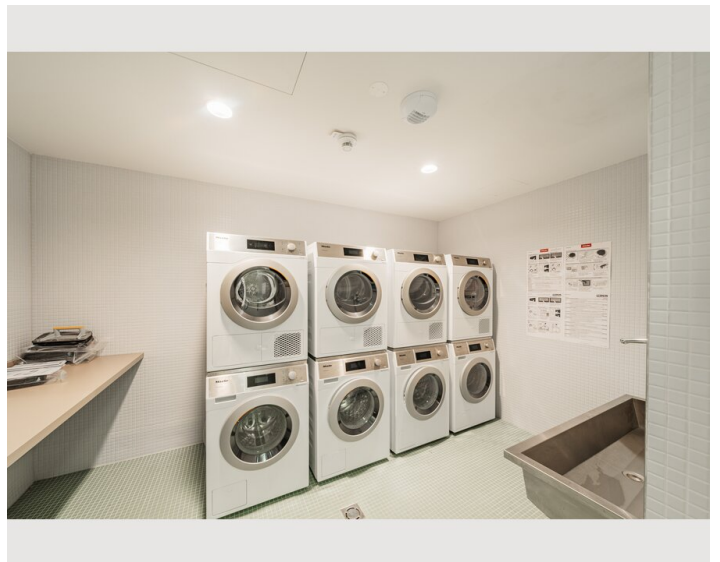
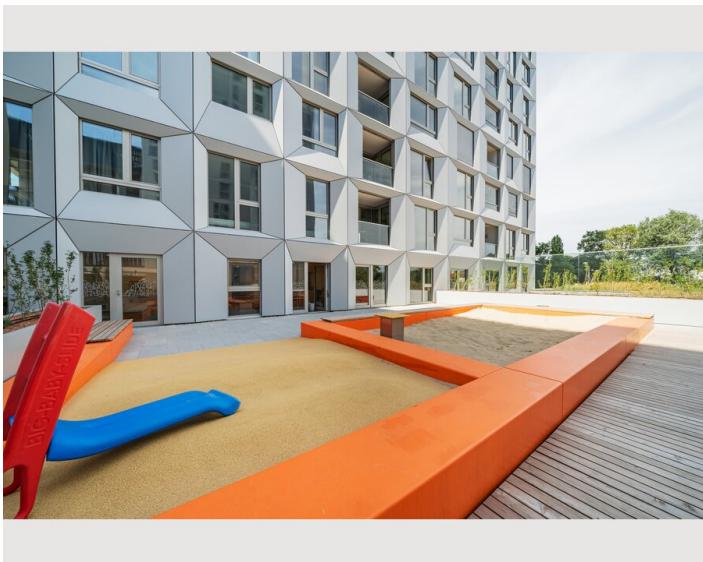
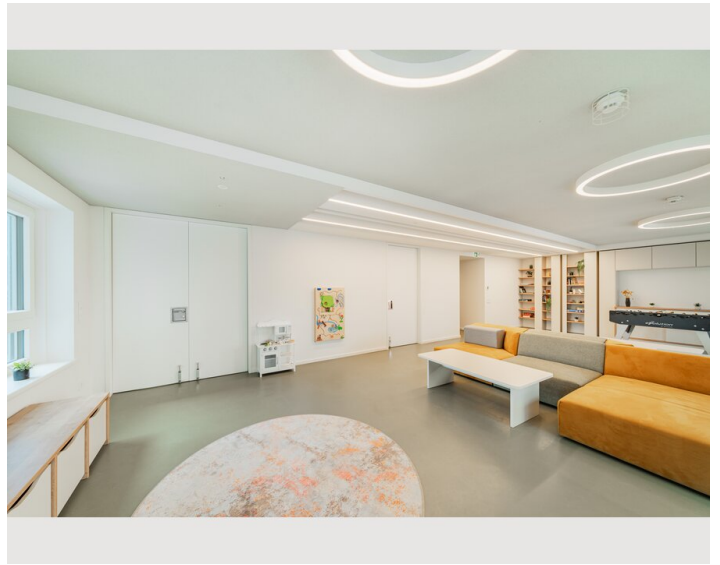
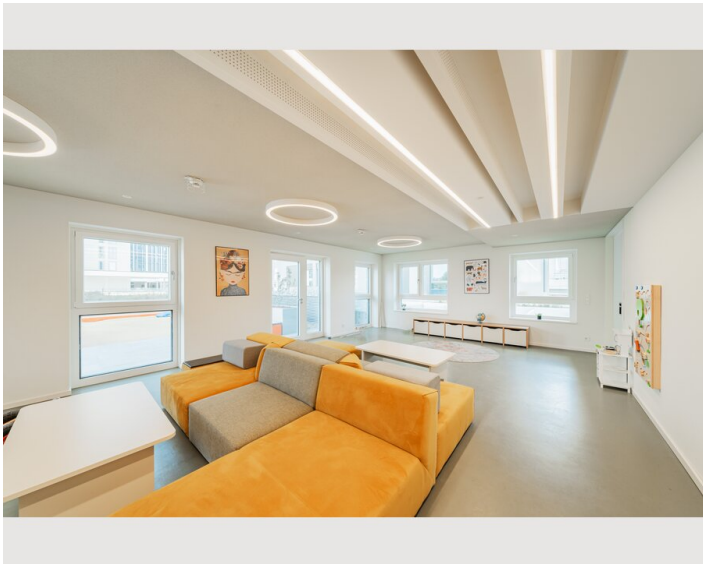
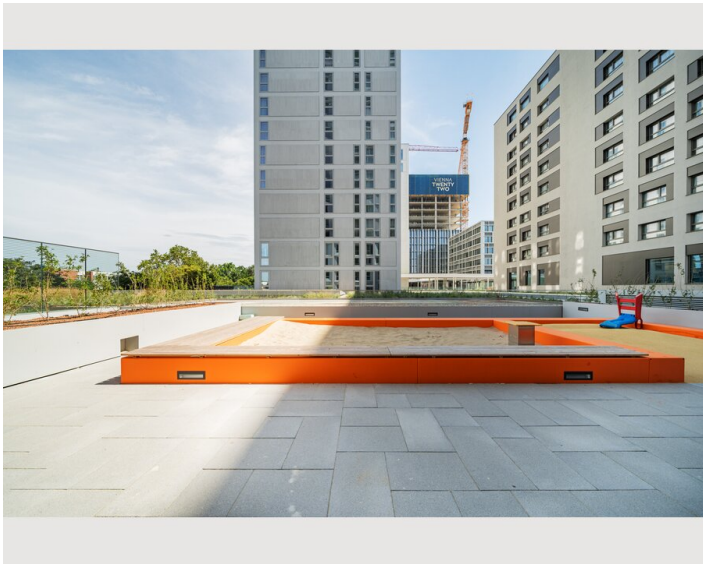


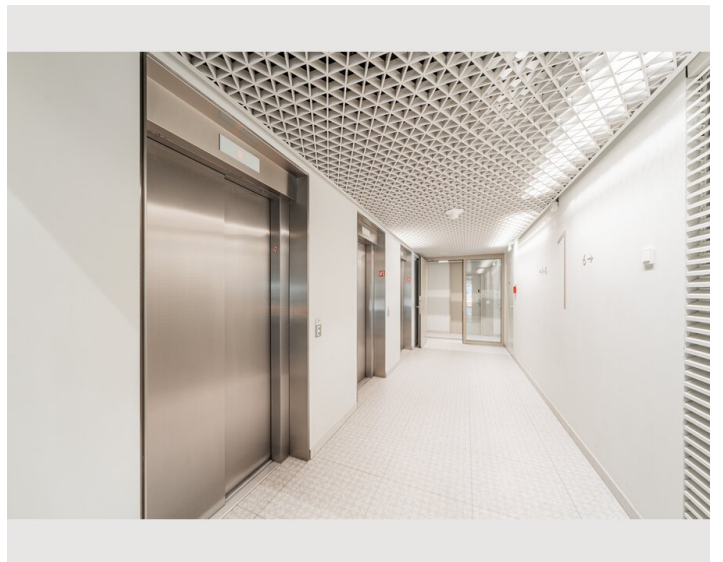
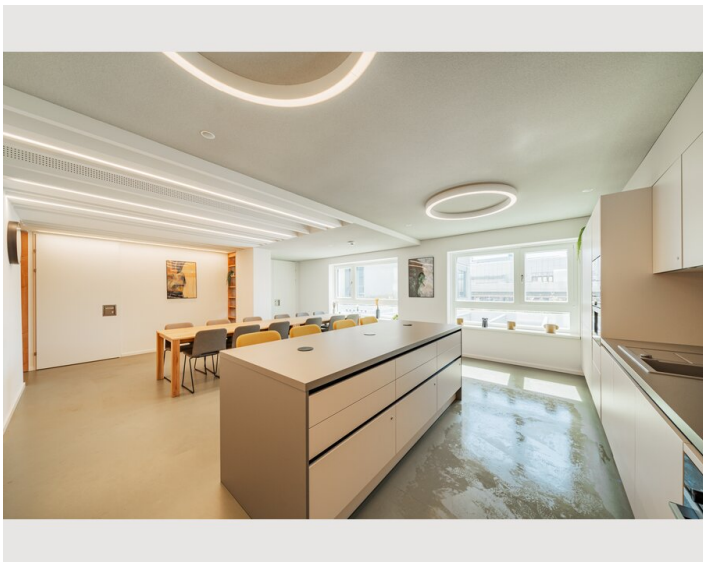
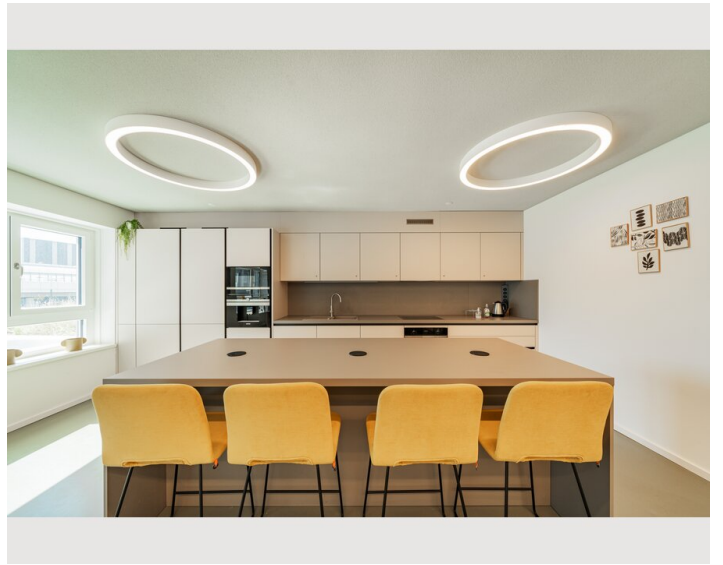
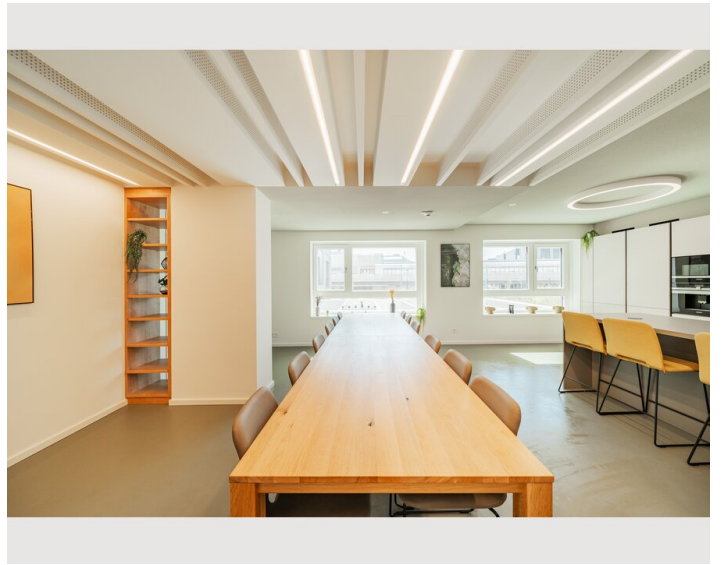
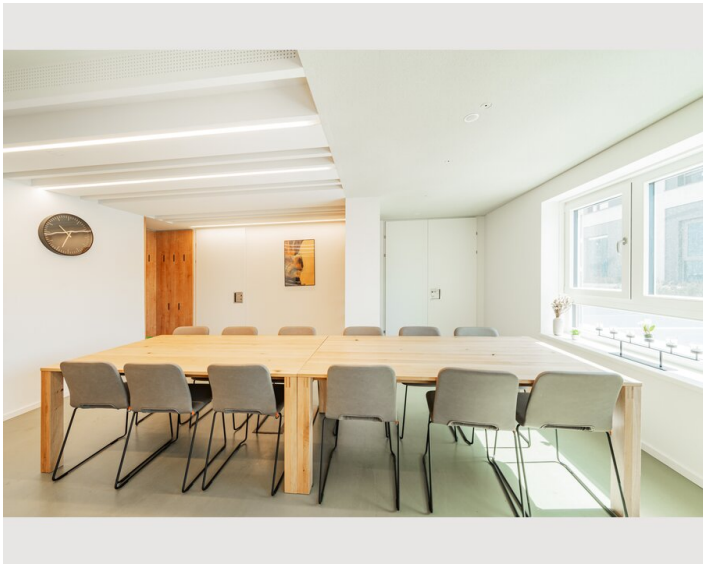


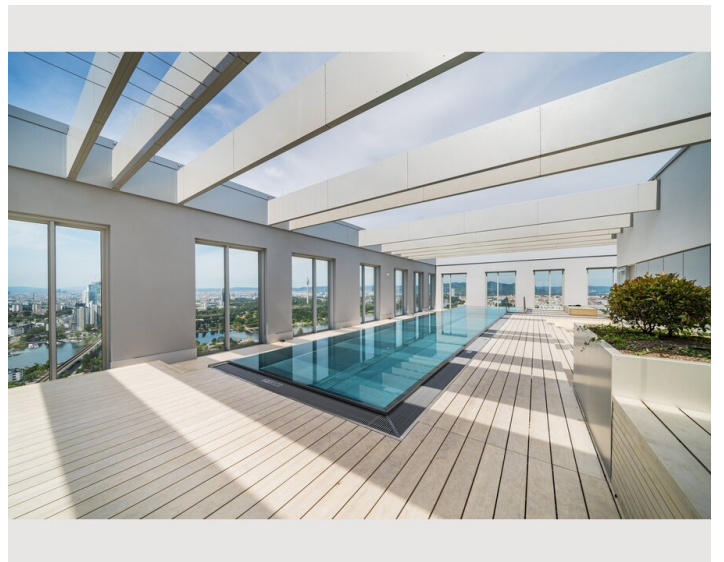
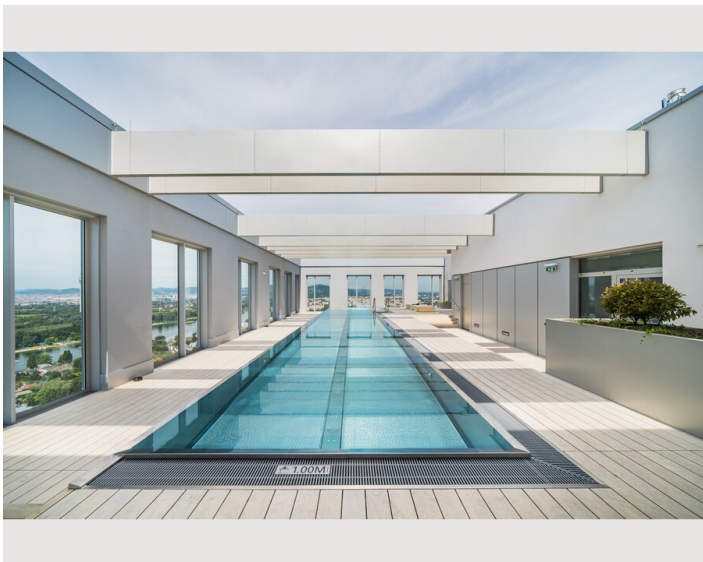
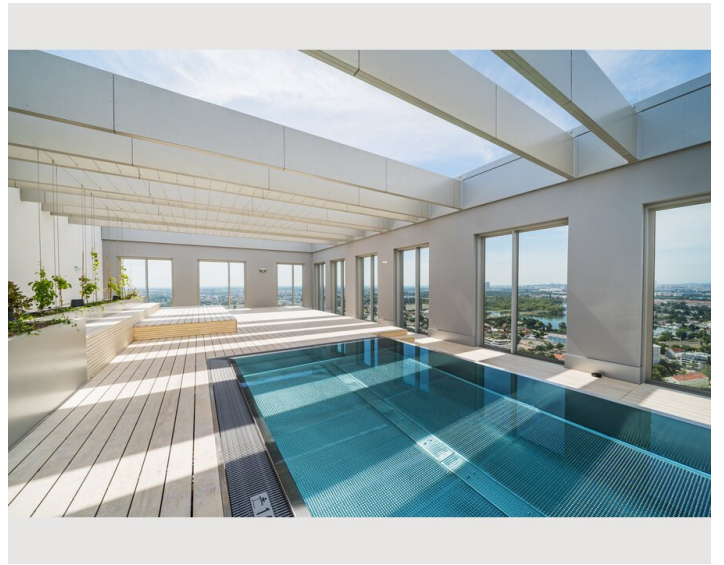
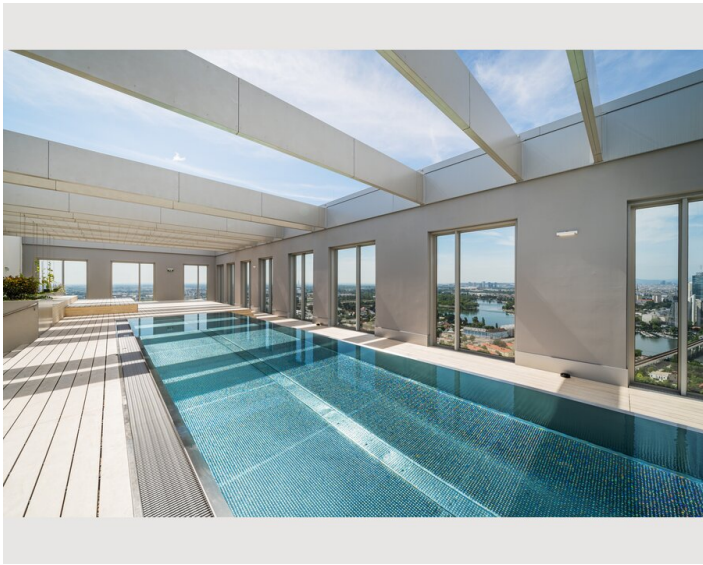
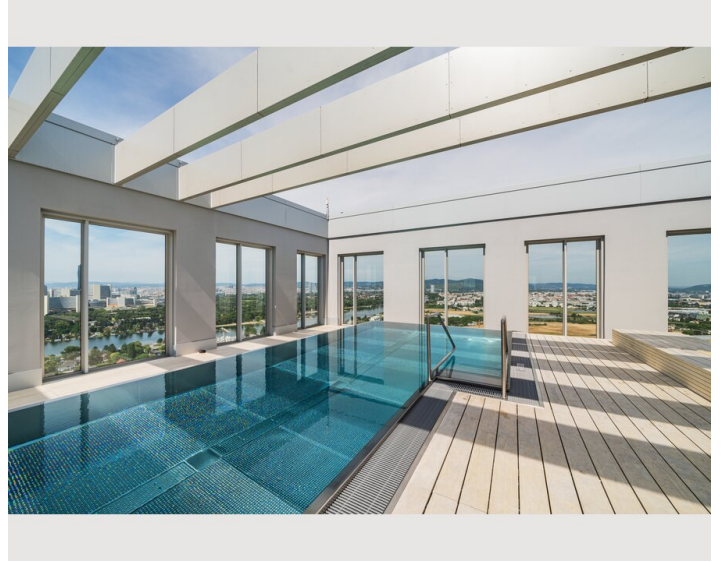
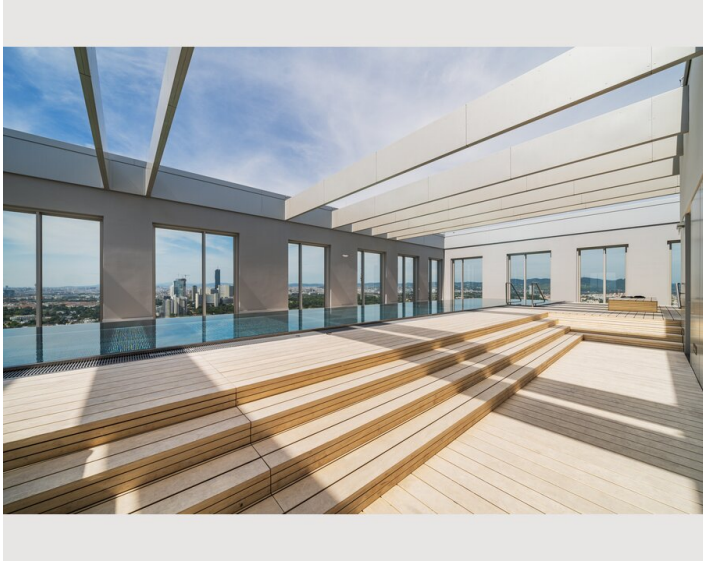


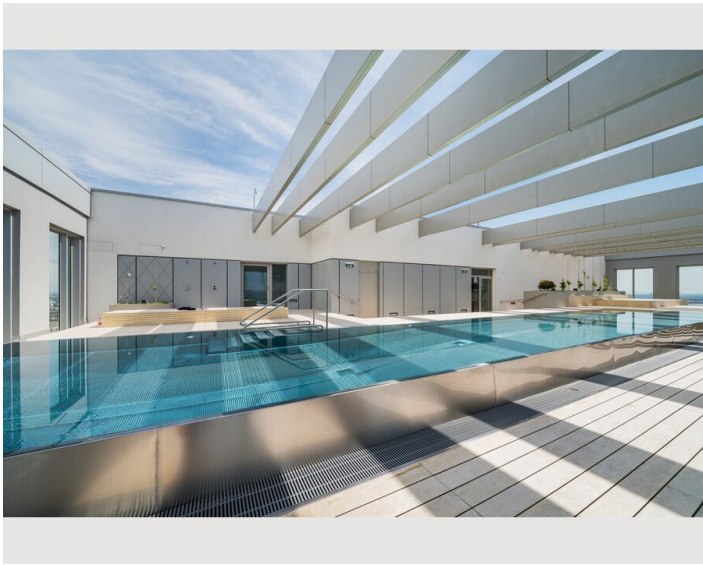














### Infrastructure

 in the neighboring house (20m)

 U1-Kagran across the street

 in front of the building

---

The residential tower in the new VIENNA TWENTYTWO district offers excellent accessibility from all directions with its ideal transport location directly at the underground (U1 - Kagran), tram (lines 25 & 26) and bus station Kagran, opposite the Donau Zentrum and the Cineplexx and near the Old Danube. The immediate surroundings offer a wide range of opportunities for leisure and sport as well as local recreation and shopping.

## Location

