



4 ROOM APARTMENT AND MORE, 1220 VIENNA

V22-Apartments 3 bedrooms

Object number: V22-4Z

[View and rent online](#)

The new and modernly furnished 3-bedroom apartment is located in a recently built high-rise building near Donau Zentrum shopping center and has a balcony/loggia featuring a seating area.

Period	18/12/2025 - 18/01/2026
Number of persons	2
Total incl. VAT.	€ 5.422,25
Security deposit	€ 3.900,00



Living space

97m²



Maximum occupancy

6 Persons



Complete accommodation [?]

2 Private bathrooms 3 Separated bedrooms 1 Living-Sleepingroom



1. floor

Elevator available



Check-in

13:00 - 23:59 Clock



Check-out

00:01 - 11:00 Clock

Sleeping options

Bedroom 1



1x Double bed (1,80 m x 2 m)

Bedroom 2



1x Double bed (1,60 m x 2 m)

Bedroom 3



1x Double bed (1,60 m x 2 m)

Living and sleeping



1x Sofa bed (1 person)

Descripton of accommodation

3D-tour of that apartment:

<https://my.matterport.com/show/?m=1WskbbY856b>

The new and modernly furnished 3-bedroom apartment is located in a recently built high-rise building near Donau Zentrum shopping center and has a balcony/loggia featuring a seating area.

Fully and modernly furnished: fitted kitchen (Miele appliances!) including kitchen utensils and crockery, washing machine, bathroom with bathtub/walk-in shower, flat screen TV, high-speed Internet.

[Access to the pool and fitness room is only included with a minimum rental period of 3 months.]

The impressive, 19 m long rooftop pool (on the 33rd floor – only in summer) with a fascinating view of the city and wind-protected sun deck with numerous sunbathing areas invites you to swim every day from early in the morning at sunrise to late in the evening at sunset.

You enjoy the luxurious comfort of a private gym right in the building with a view of and direct access to the green plaza. The high-end equipment enables a variety of training options (strength/cardio) for personal fitness.

A well-equipped wellness area with sauna and relaxation room is available for a fee. Direct access to the community terrace offers the opportunity to get some fresh air and to ventilate sufficiently.

All amenities for daily needs such as a supermarket in the direct neighborhood and the Donau Zentrum shopping center are in the immediate vicinity.

The residential tower in the new VIENNA TWENTYTWO district offers excellent accessibility from all directions with its ideal transport location directly at the underground (U1 - Kagran), tram (lines 25 & 26) and bus station Kagran, opposite the Donau Zentrum and the Cineplexx and near the Old Danube. The immediate surroundings offer a wide range of opportunities for leisure and sport as well as local recreation and shopping.

Equipment & Features



Basic equipment

- Loggia
- TV
- Community washing machine
- Bedclothes
- Private toilet
- Vacuum cleaner
- Cleaning utensils
- Internet/Wifi
- Private washing machine
- Community dryer
- Towels
- Aircondition
- Iron & ironing board
- Hairdryer



Pool

- Outdoor Pool



Wellness

- Sauna
- Fitness room



First supply

- Toilet paper
- Soap
- Nespresso capsules



Kitchen

- Private kitchen
- Glasses/Tableware
- Dishwasher
- Cooking utensils
- Espresso machine

Informations

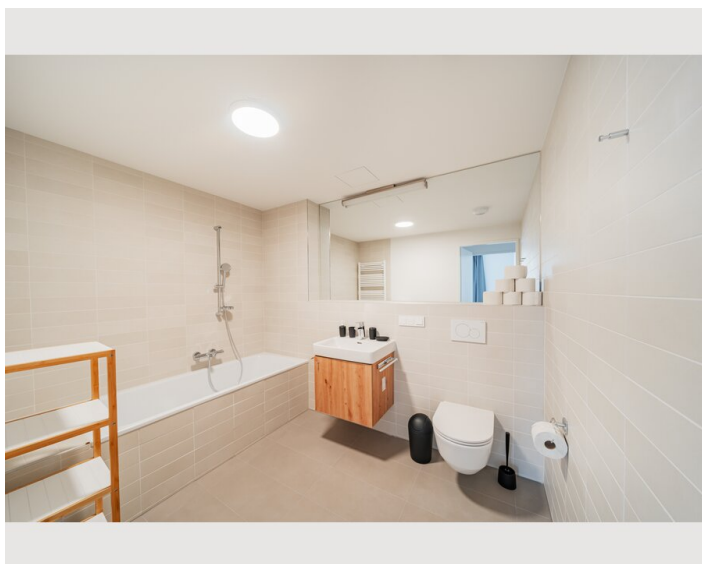
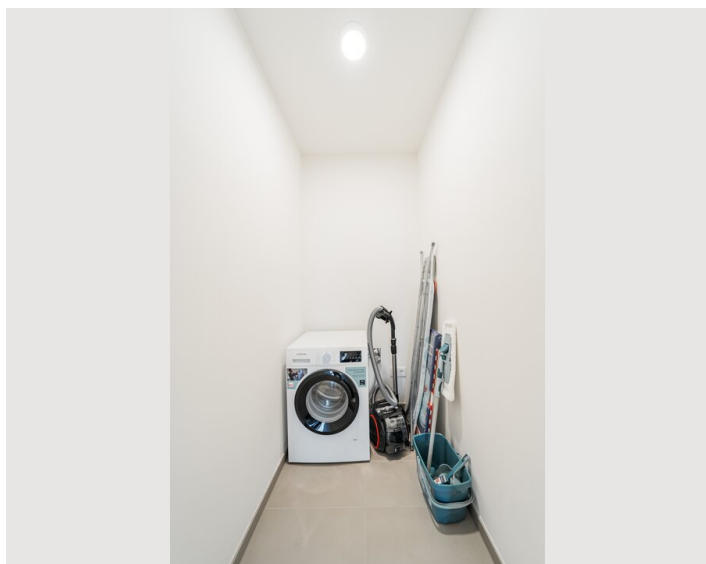
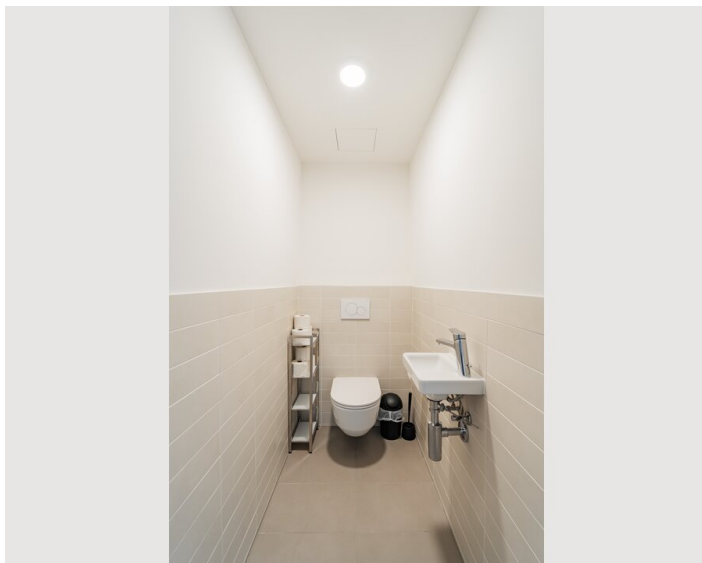
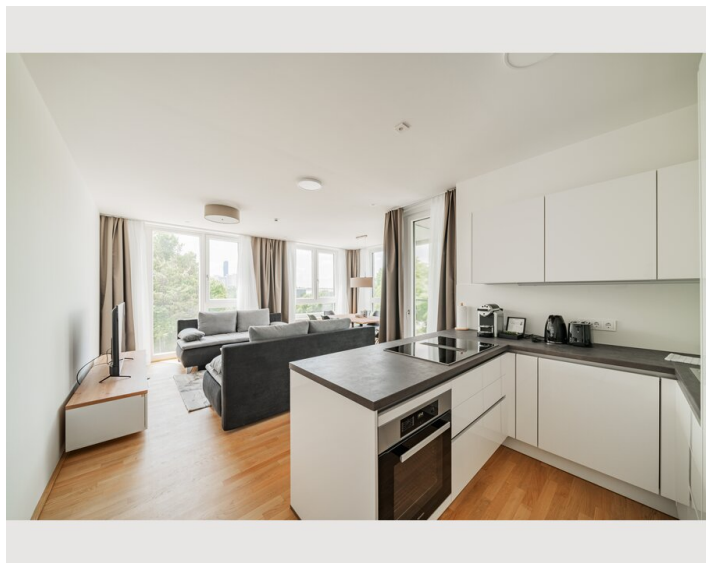
- Suitable for children
- Pets forbidden
- Bicycle room free of charge
- Short-term parking zone subject to a charge
- Regular cleaning at extra cost

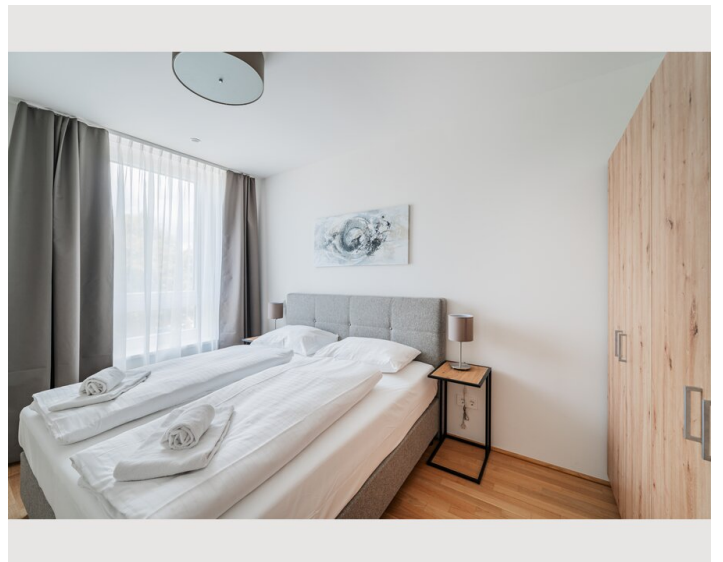
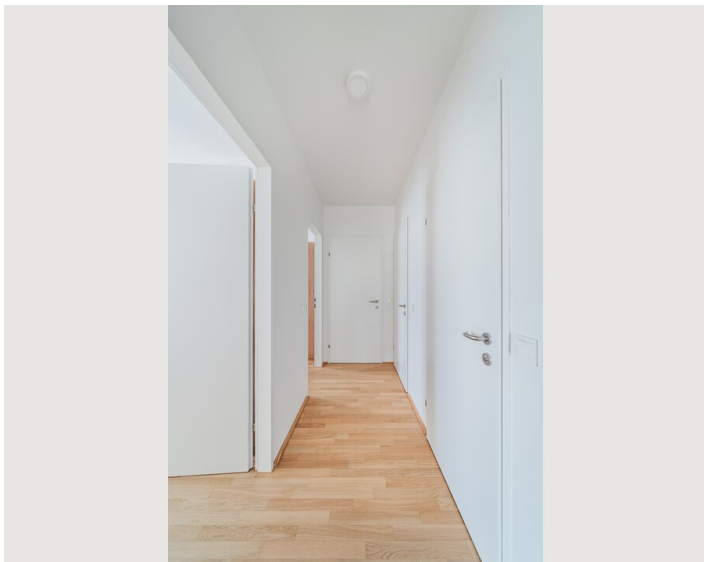
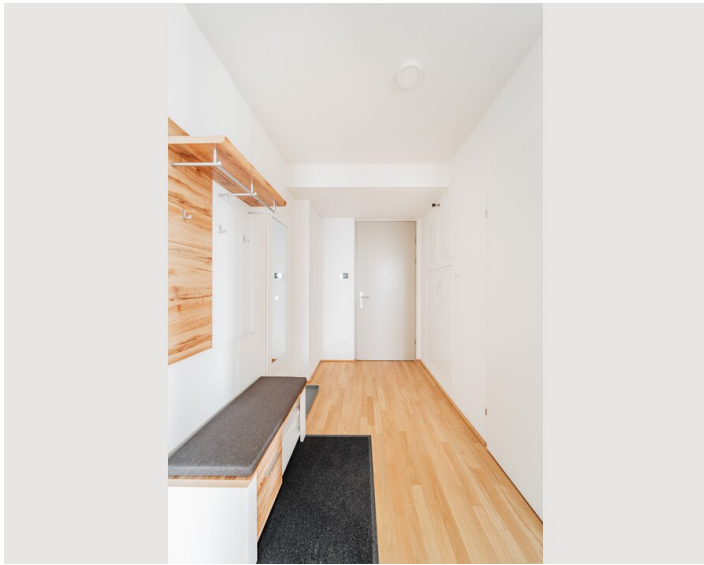
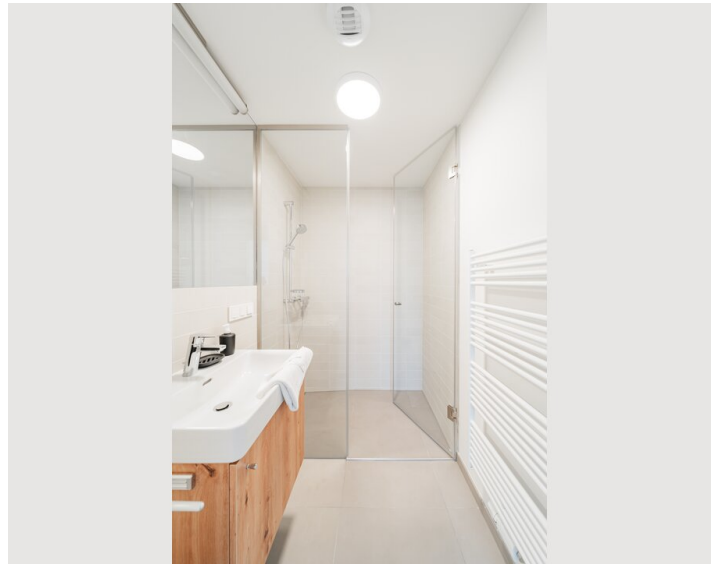
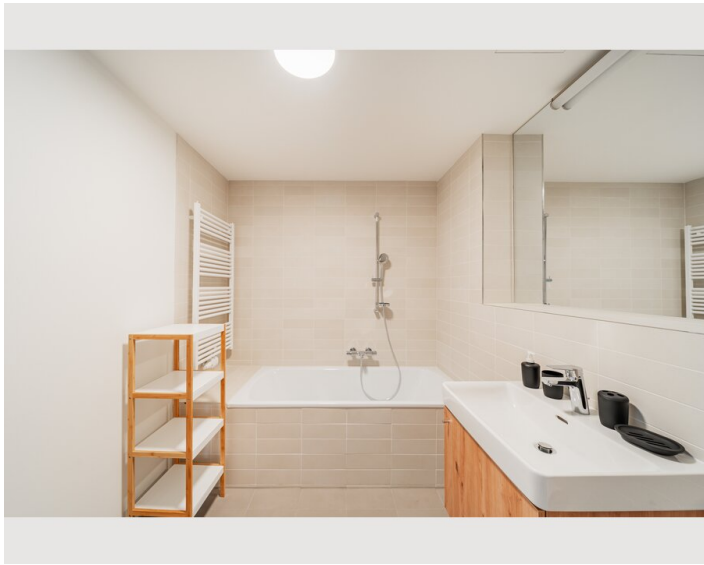
Additional services

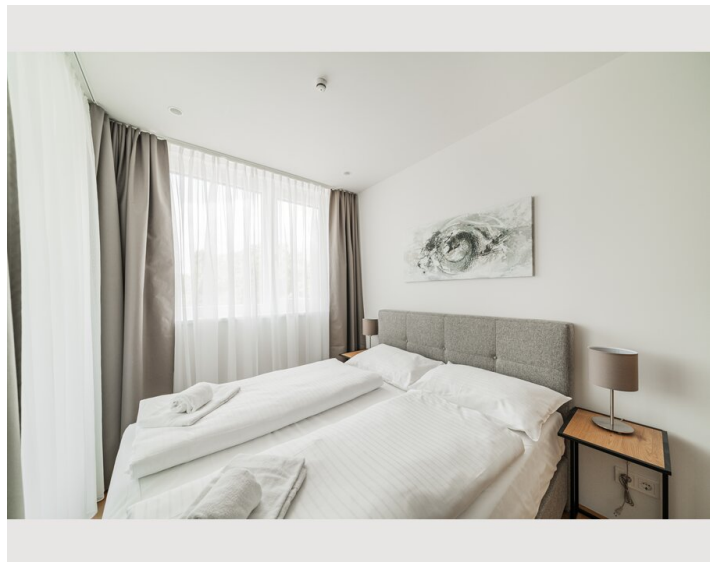
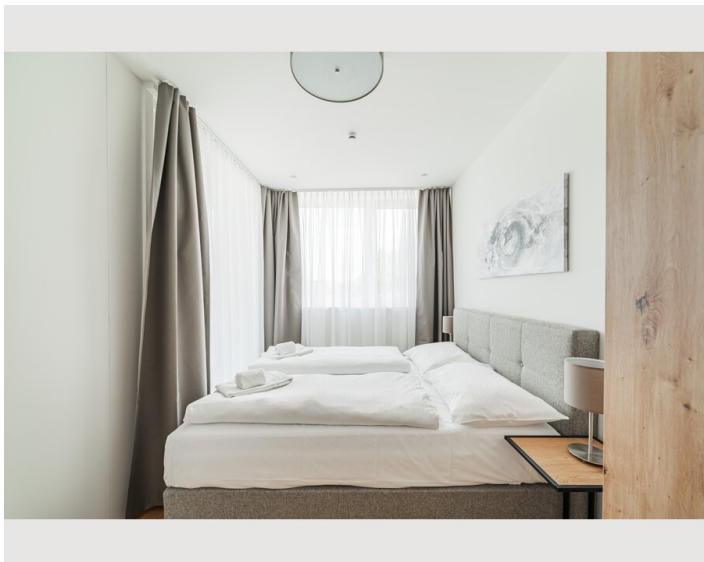
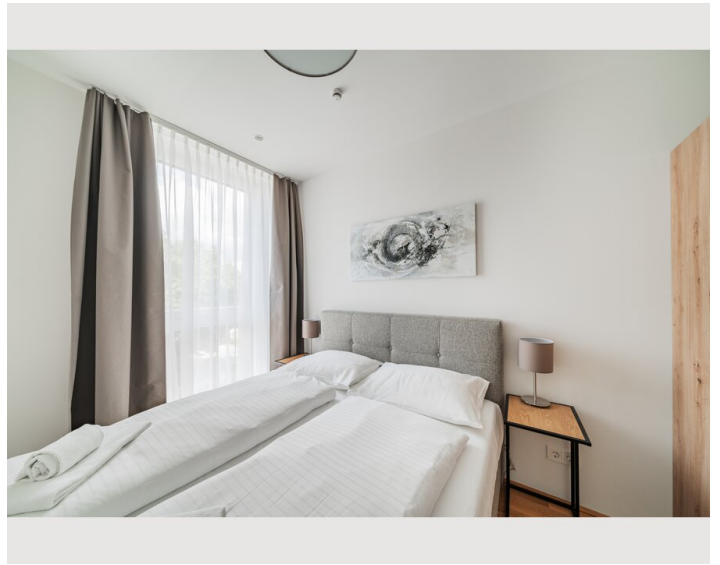
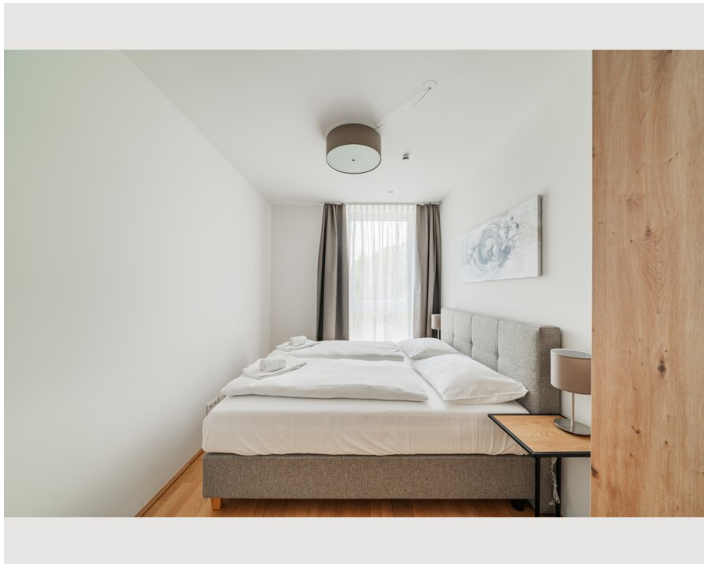
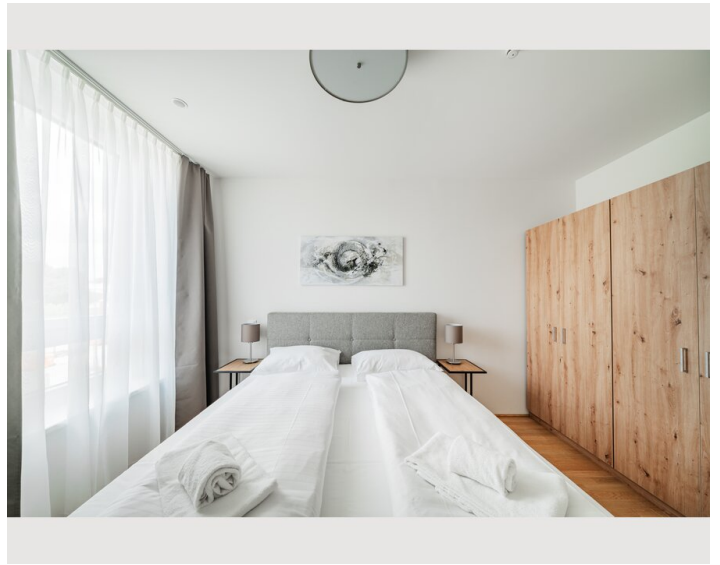
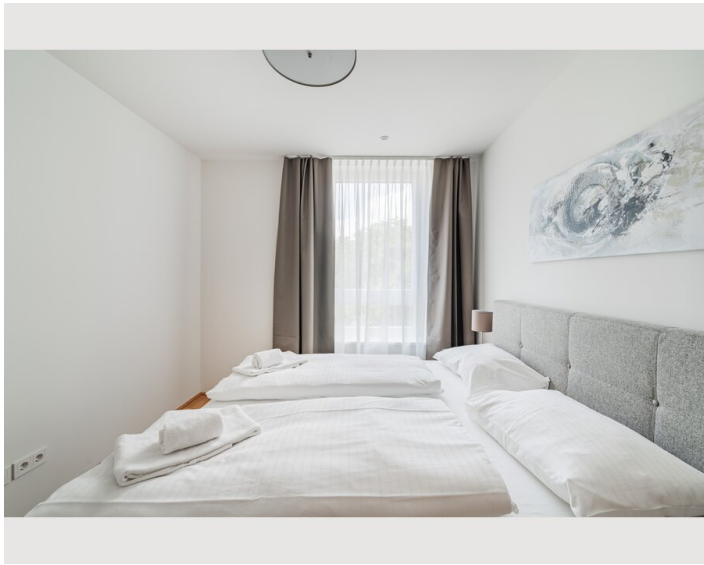
- Parking within house (€ 252,00)

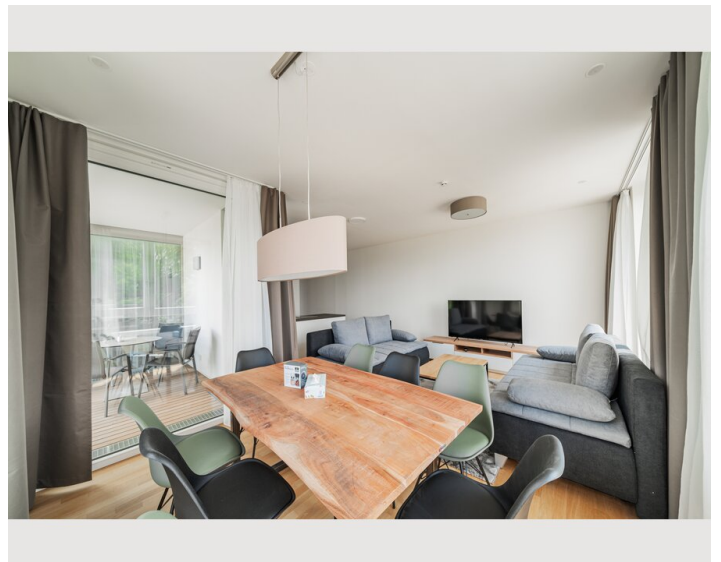
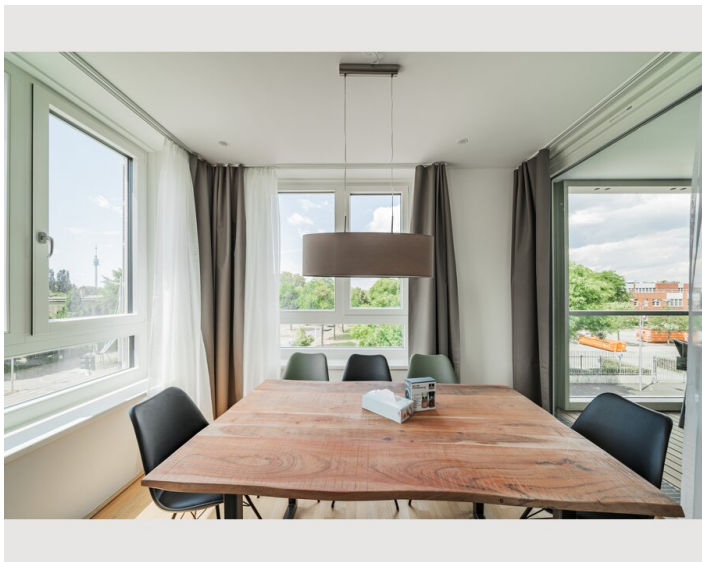
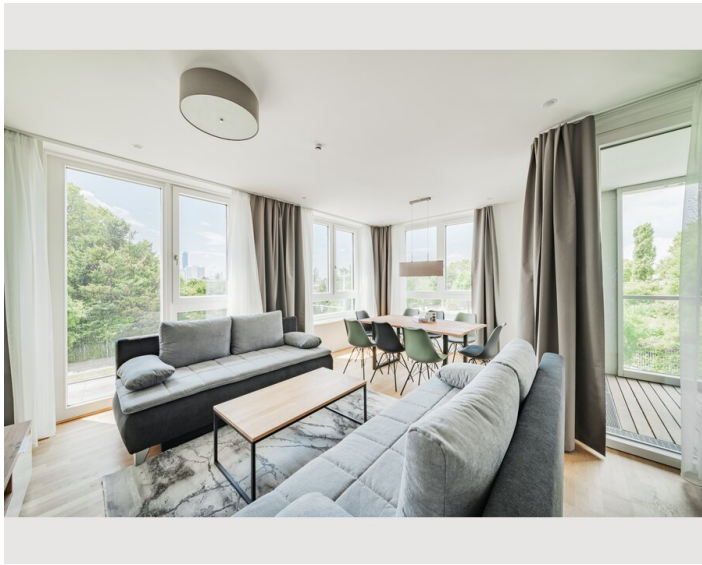
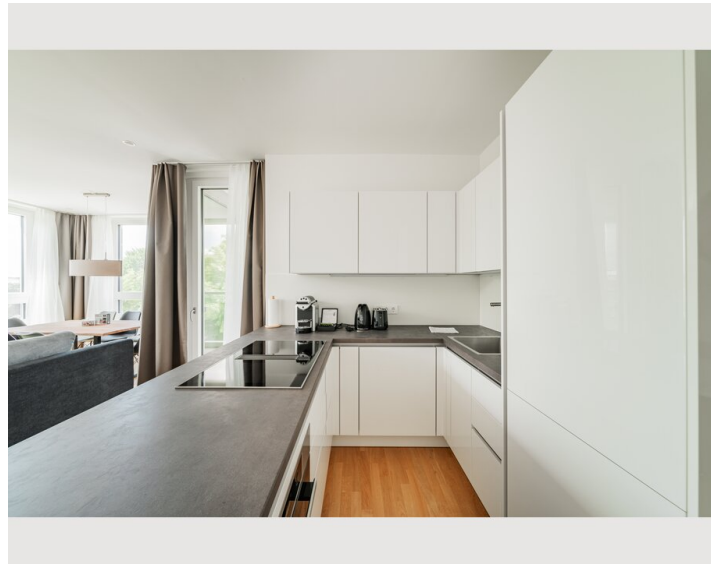
All prices are gross per month - billing is done directly with the lessor.

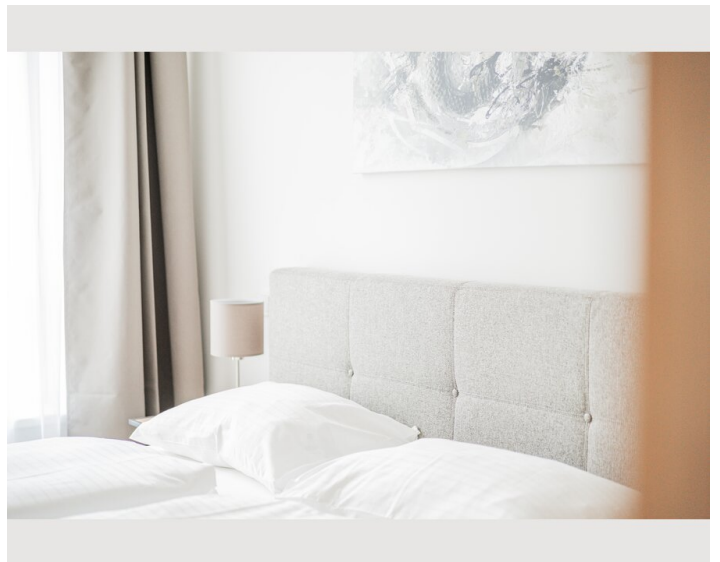
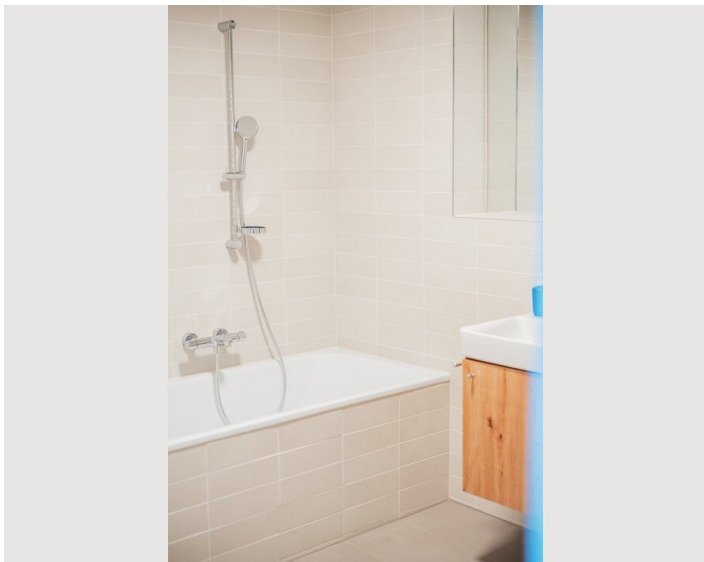
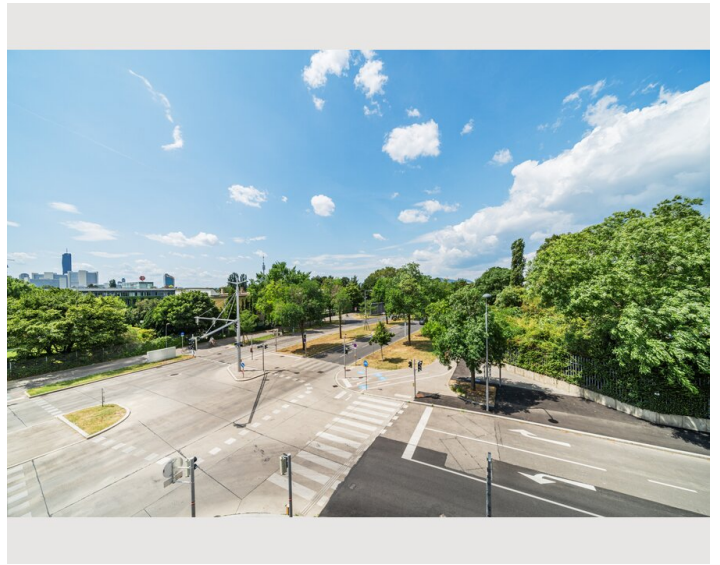
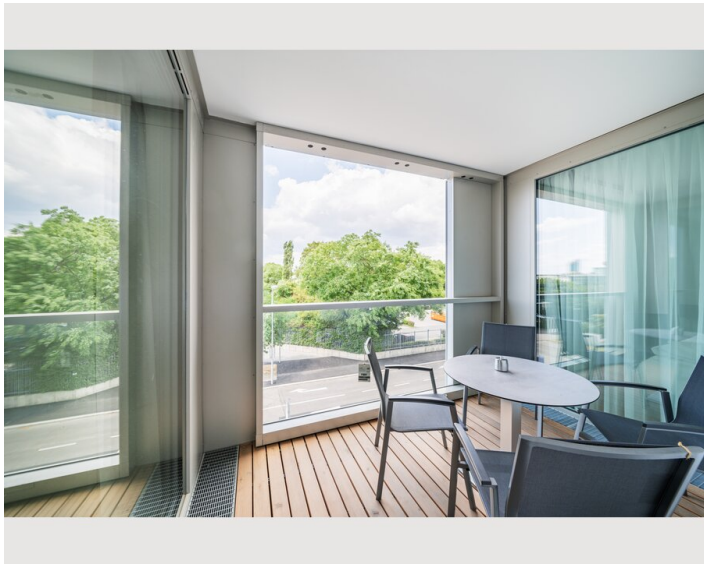
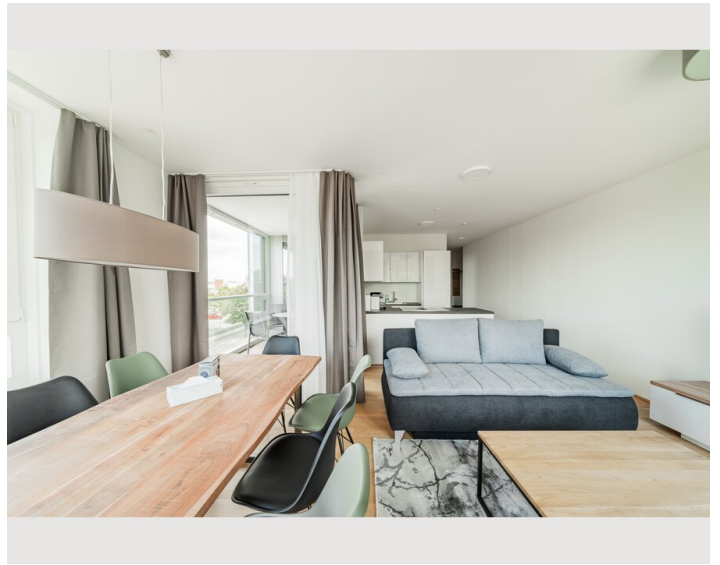
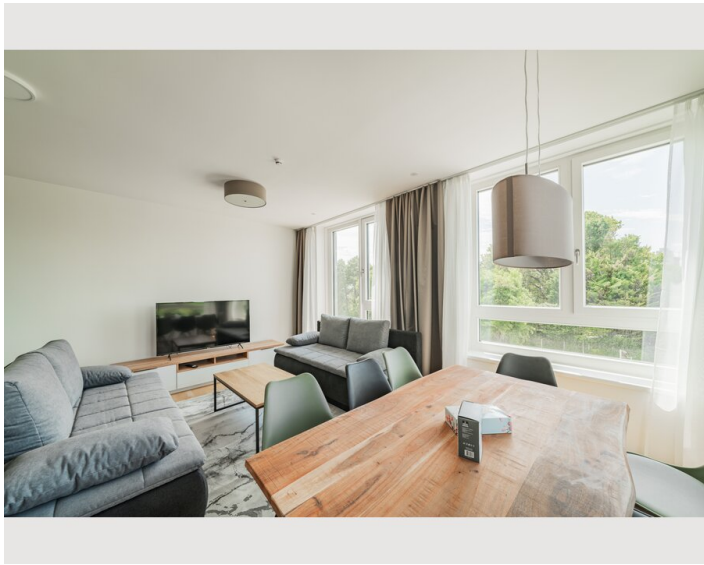
Picture gallery

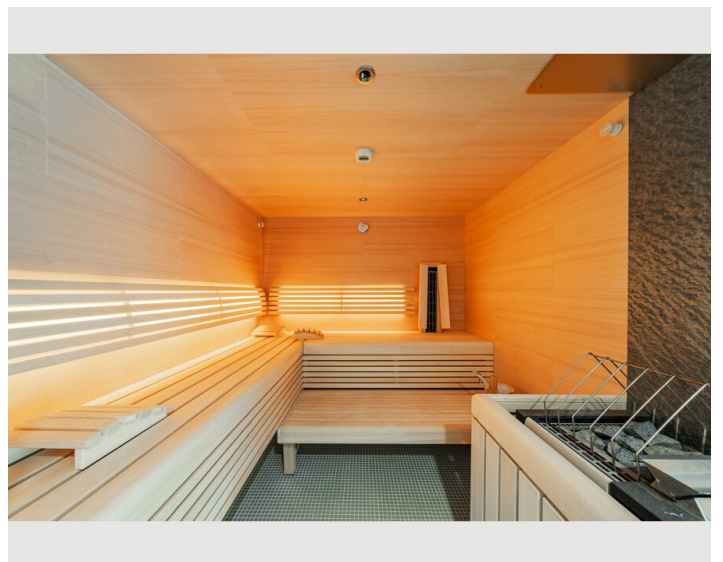
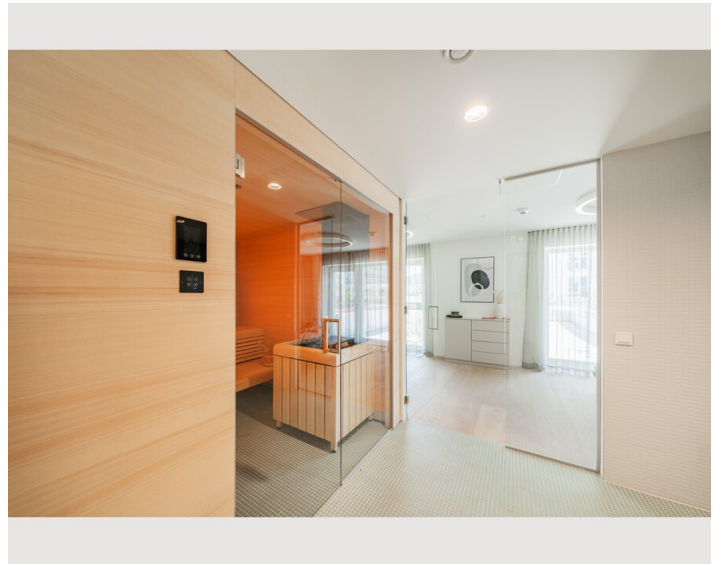
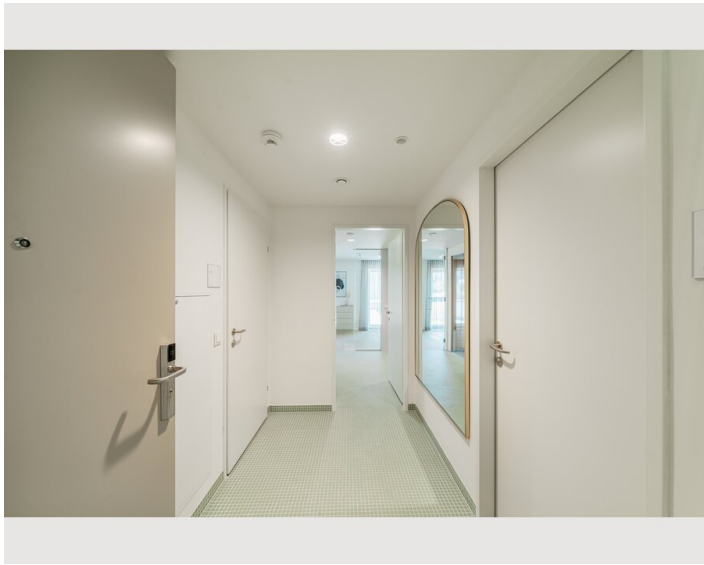
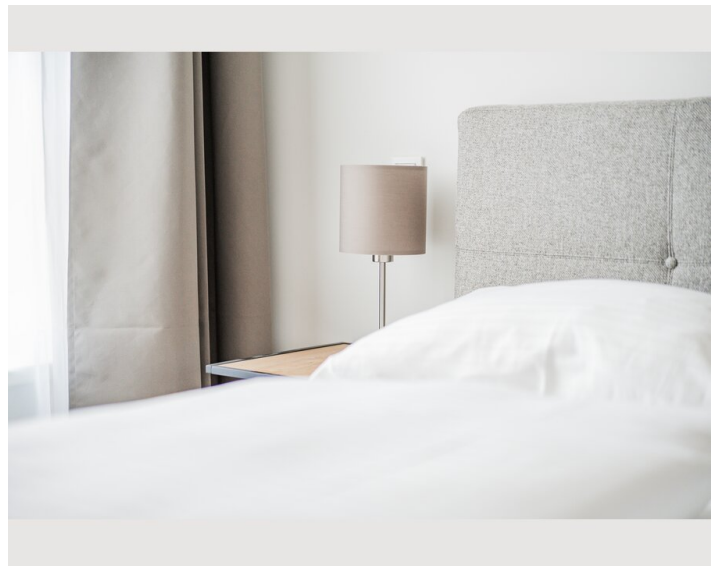
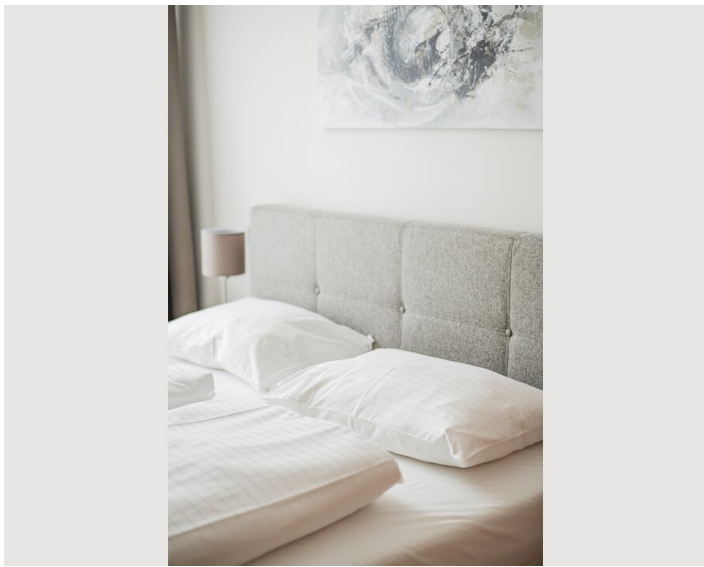


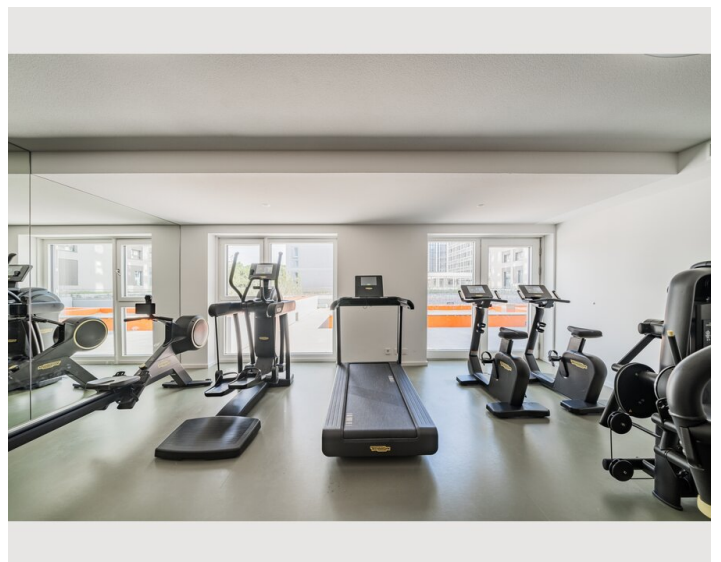
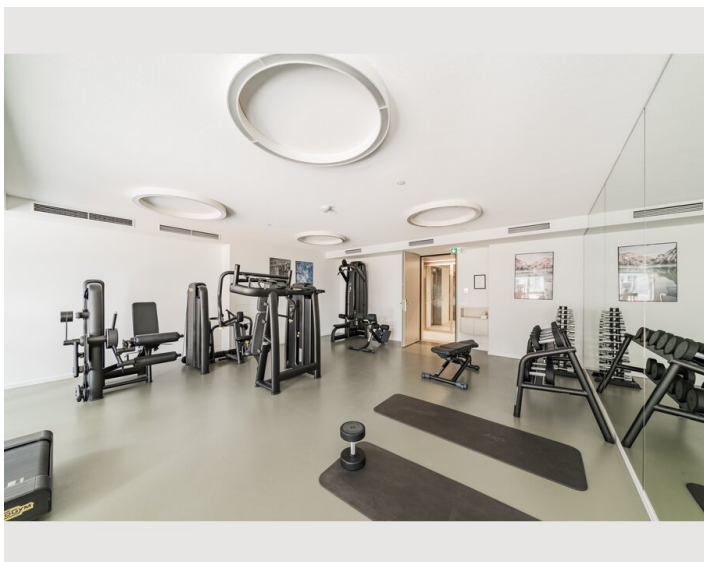
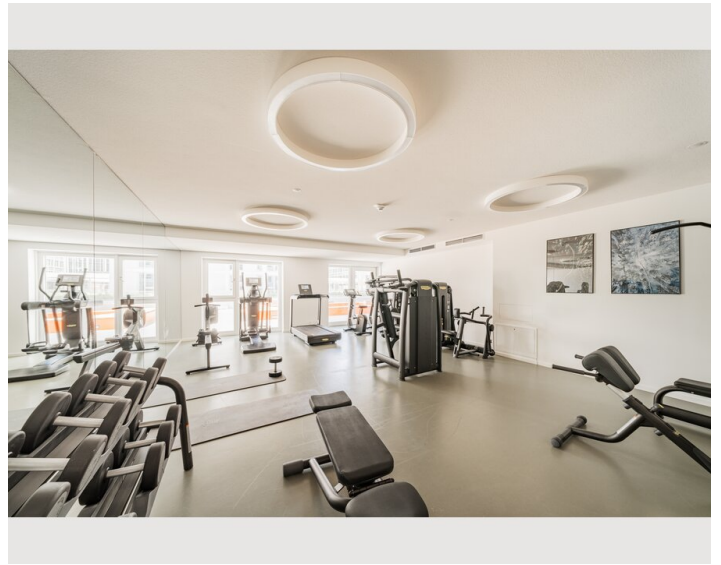
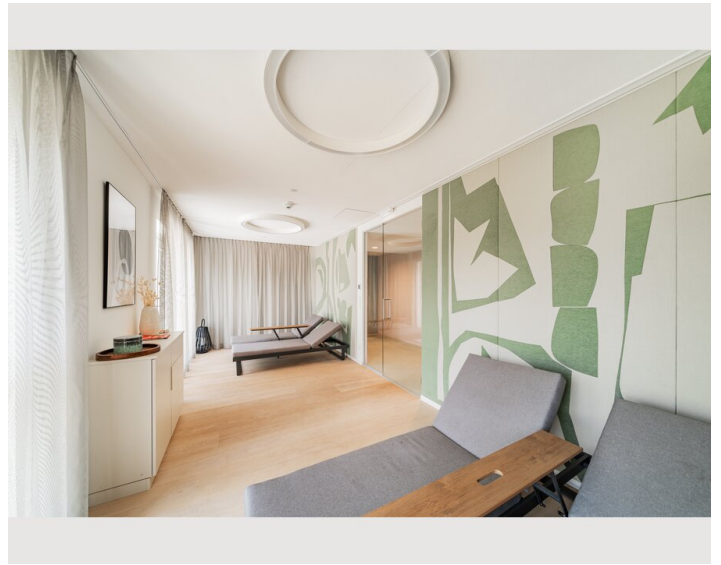
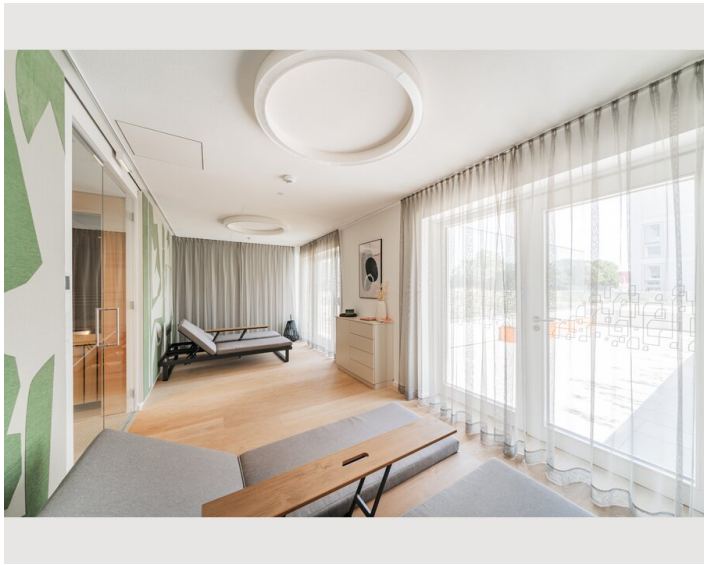


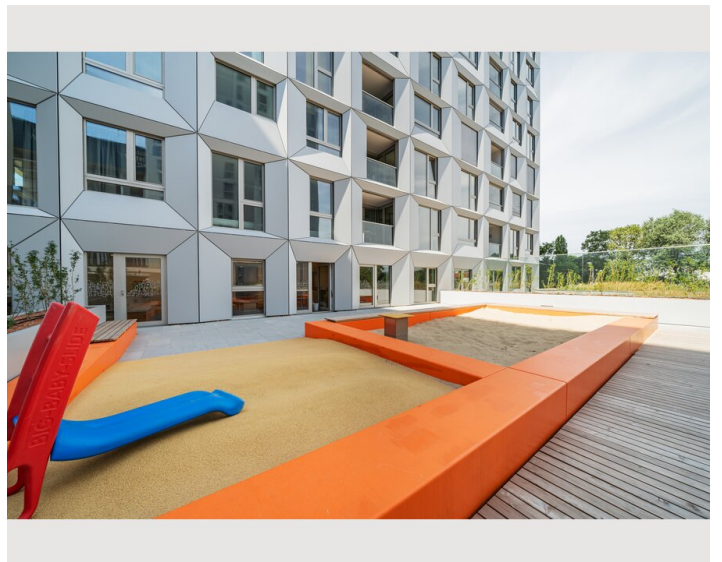
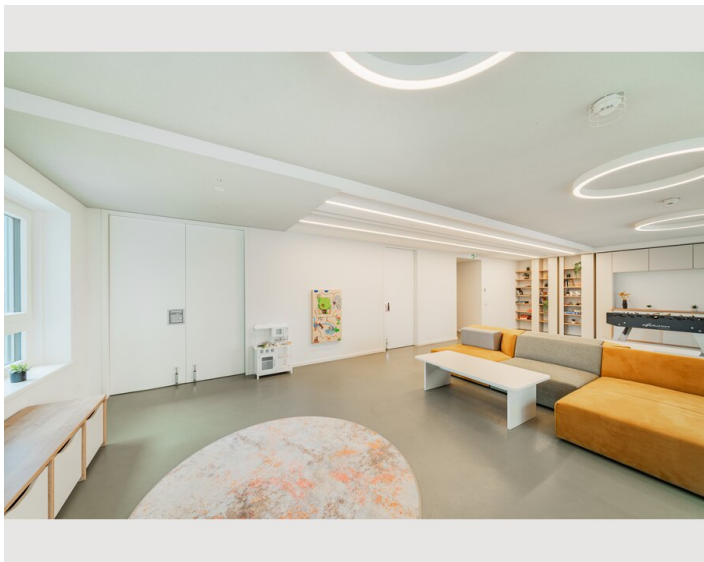
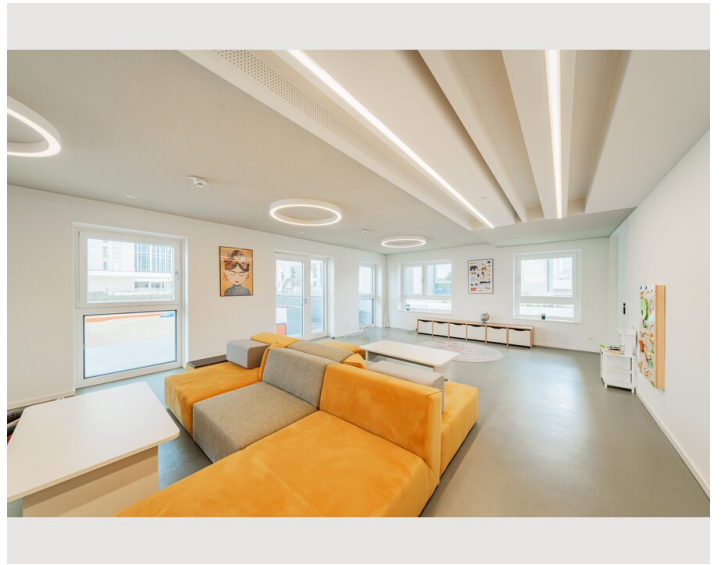
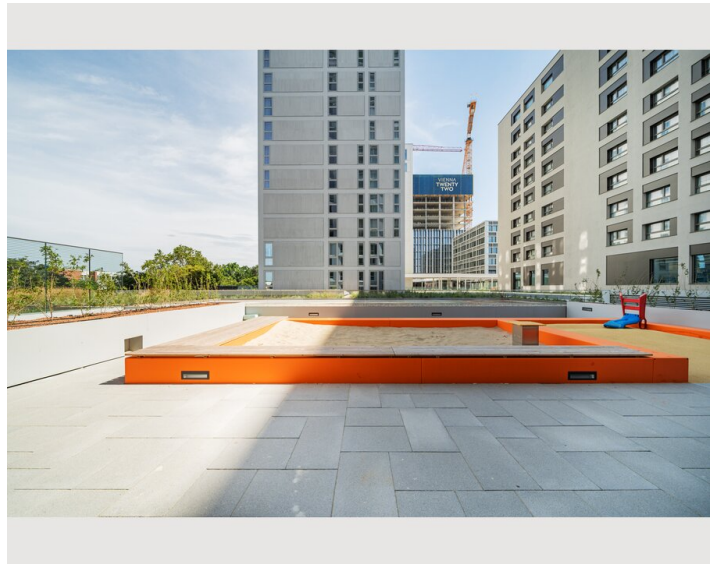
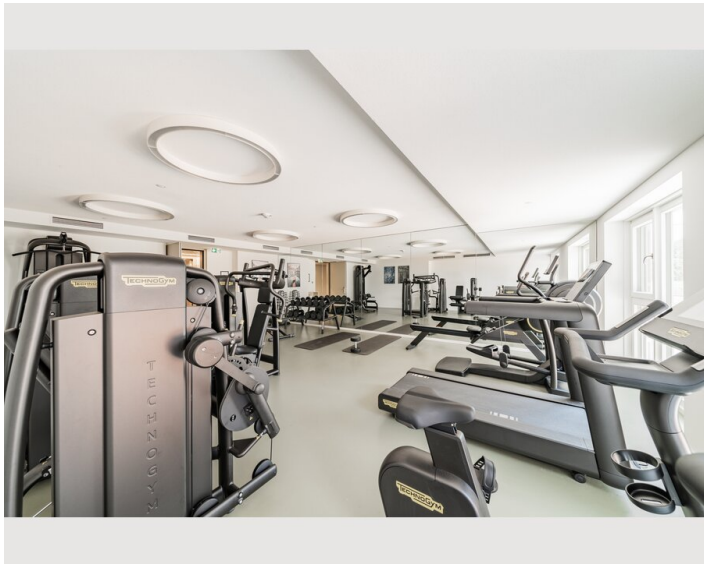


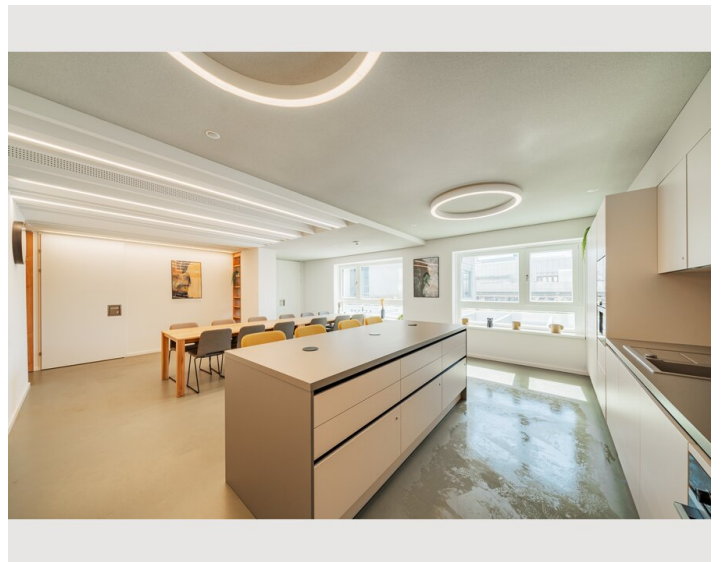
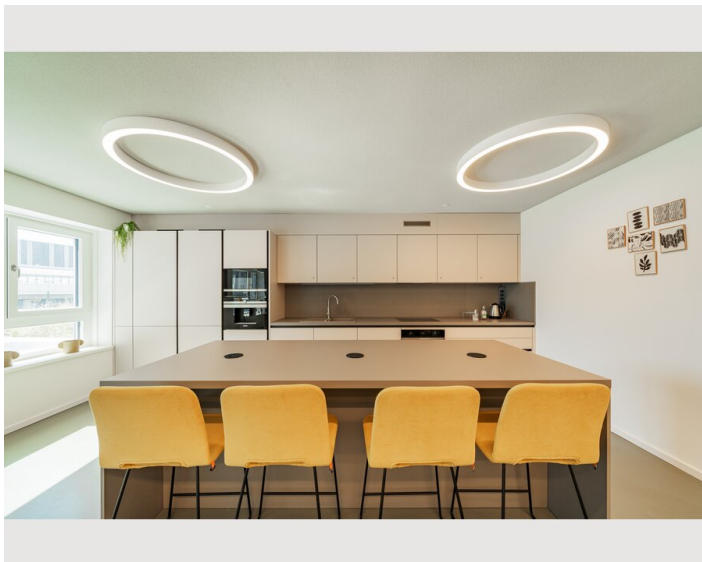
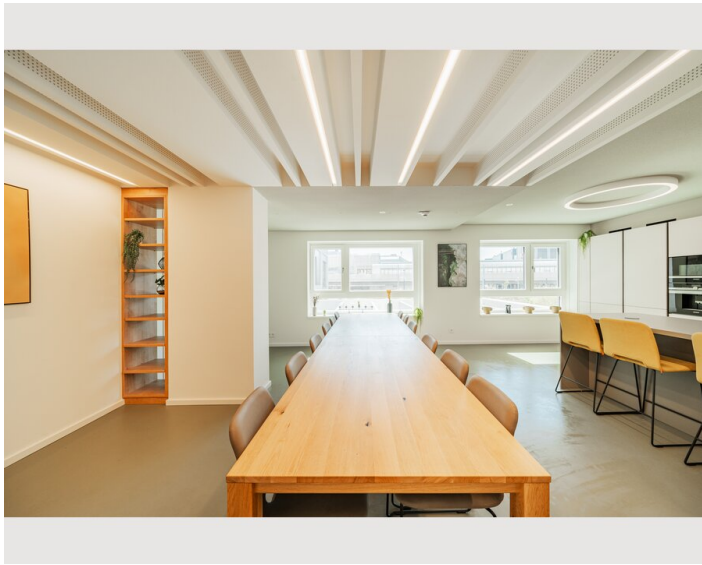
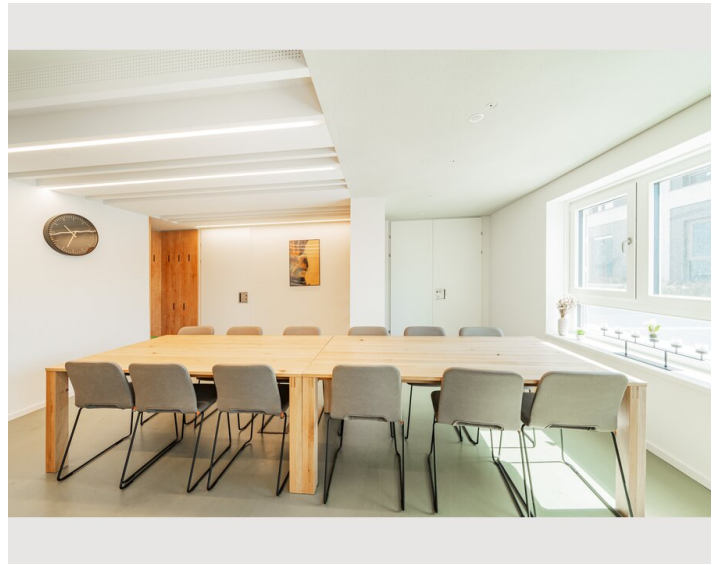
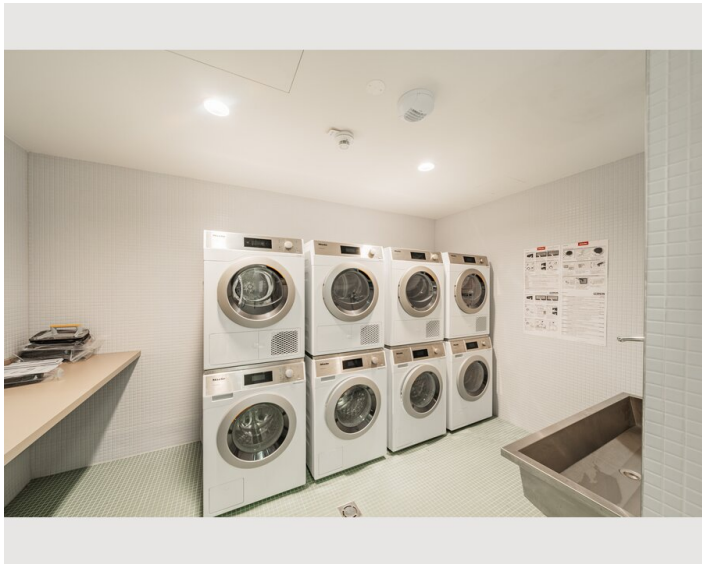


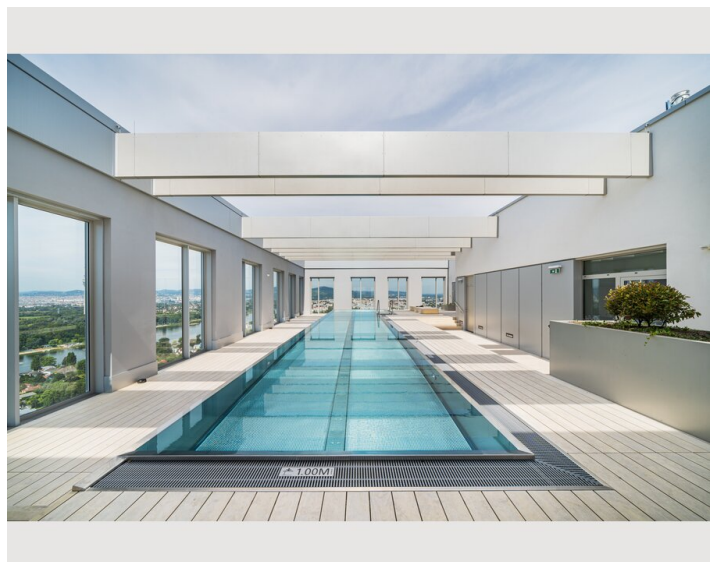
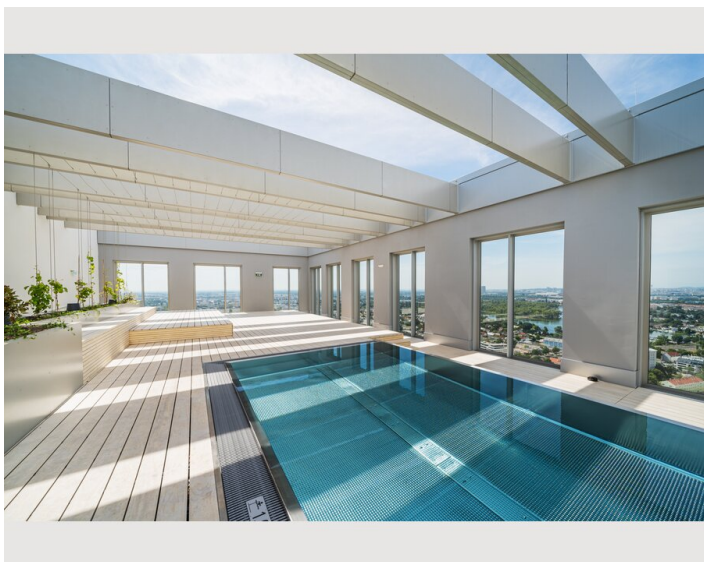
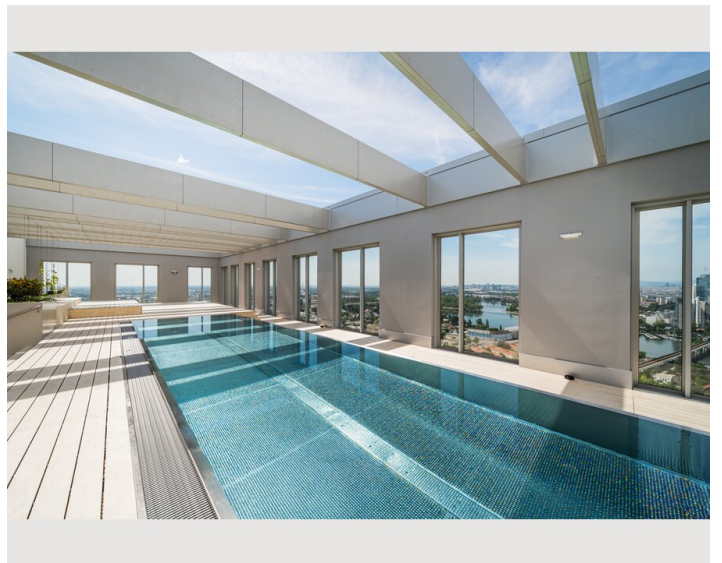
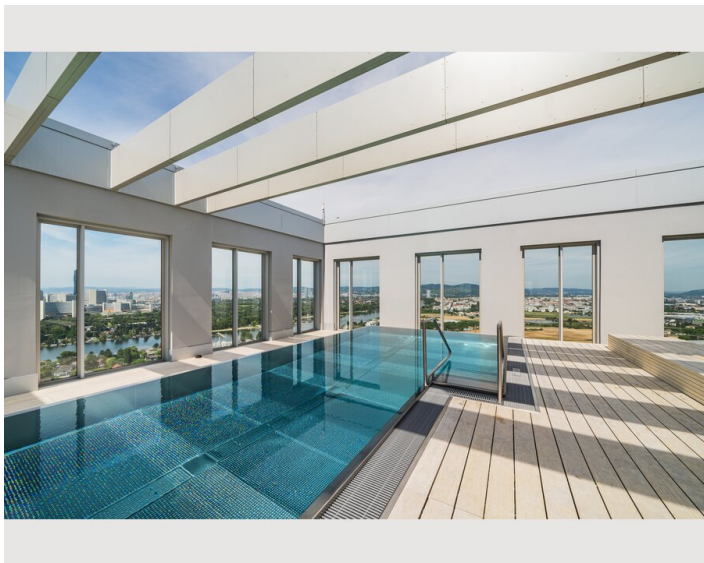
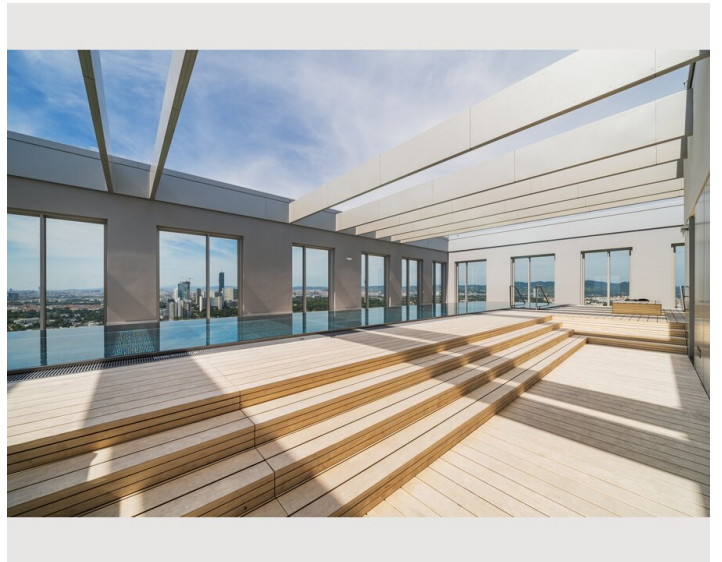
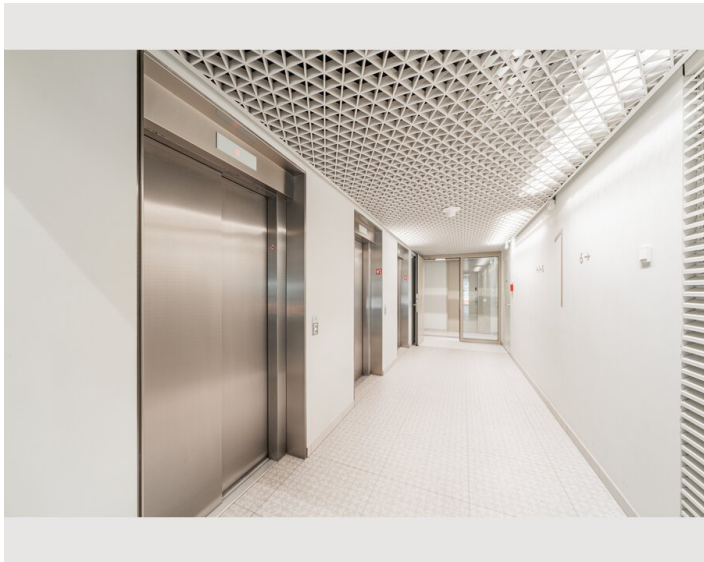


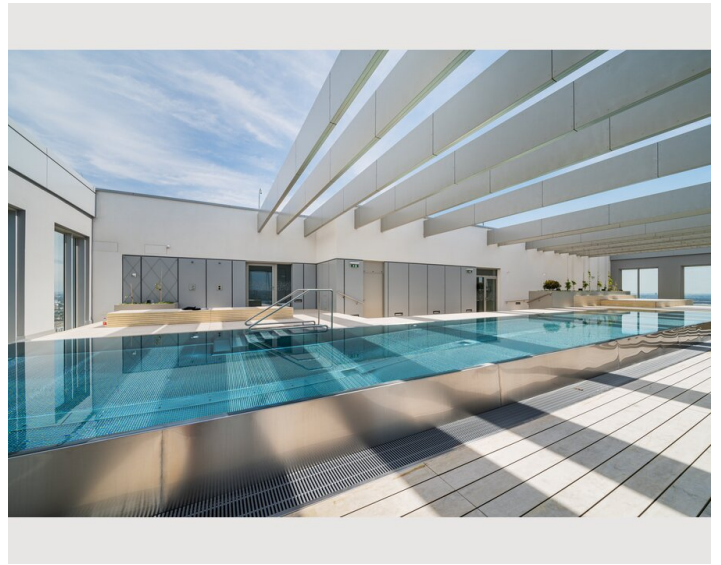
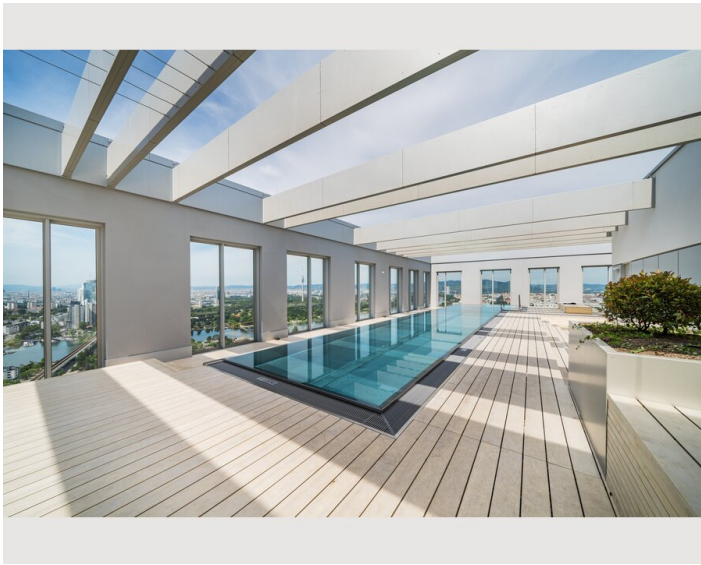















-
-
-
-
-
-

-
-
-
-
-
-

Infrastructure

 in the neighboring house (20m)

 U1-Kagran across the street

 in front of the building

The residential tower in the new VIENNA TWENTYTWO district offers excellent accessibility from all directions with its ideal transport location directly at the underground (U1 - Kagran), tram (lines 25 & 26) and bus station Kagran, opposite the Donau Zentrum and the Cineplexx and near the Old Danube. The immediate surroundings offer a wide range of opportunities for leisure and sport as well as local recreation and shopping.

Location

