



4 ROOM APARTMENT AND MORE, 1120 VIENNA

Spacious family apartment 140m² with garden view and terrasse

Object number: KUSZ2

[View and rent online](#)

Period	20/12/2025 - 20/01/2026
Number of persons	2
Total incl. VAT.	€ 2.316,86
Security deposit	€ 1.700,00



Living space

140m²



Maximum occupancy

5 Persons



Complete accommodation [?]

2 Private bathrooms 2 Separated bedrooms 1 Living-Sleepingroom



1. floor

Elevator available



Check-in

12:00 - 18:00 Clock



Check-out

09:00 - 11:00 Clock

Sleeping options

Bedroom 1



1x Double bed (1,60 m x 2 m)



2x Single bed



1x Sofa bed (2 persons)

Bedroom 2



2x Single bed

Living and sleeping



1x Sofa bed (1 person)

Descripton of accommodation

The bright apartment has a relaxing and quiet atmosphere. It is situated at the first floor with garden view and includes a 20m² terrasse. Its spacious 140m² are suitable for a family, communal share or artists in residence. Three rooms can be entered individually, the furniture is a mix of design classics, artworks, including stylish lamps and all necessary accessories.

Suitable for 4-6 Personen
2 bedrooms with en-suite bathrooms
2 bathrooms with tub, shower, and toilets
Living Room with pull-out sofa
Dining room and kitchen with garden view
Pantry with built-in wardrobe
Corridor with spacious windows
Storeroom for suitcases etc.
20m² terrasse with garden table and relaxing chairs

The apartment at Albrechtsgasse 24 is close to Schönbrunn, only 2 stations away with underground or 15 Minutes walking. Schönbrunn and its world famous Zoo is lovely for jogging and family walks. The Location is central Meidling, which is a residential district and a rather green and upcoming area. It is around the corner from Wienerberg and Euro-Plaza. There is a unique fresh market with various restaurants close by. Public transport connections are excellent:

20 minutes into the city center with bus or underground
Underground stations Längenfeldgasse and Niederhofstrasse (U4/U6)
Bus- und trams (59A, 62, Badner bahn) Assmayergasse
Railway station Wien Meidling/Philadelphiabrücke (ÖBB, U6, bus)
Vienna Airport: via Railway only 30 minutes away

Equipment & Features



Basic equipment

- Balcony
- TV
- Bedclothes
- Private toilet
- Hairdryer
- Internet/Wifi
- Private washing machine
- Towels
- Vacuum cleaner



First supply

- Toilet paper
- Soap
- shampoo



Kitchen

- Private kitchen
- Coffee machine
- Glasses/Tableware
- Dishwasher

Informations

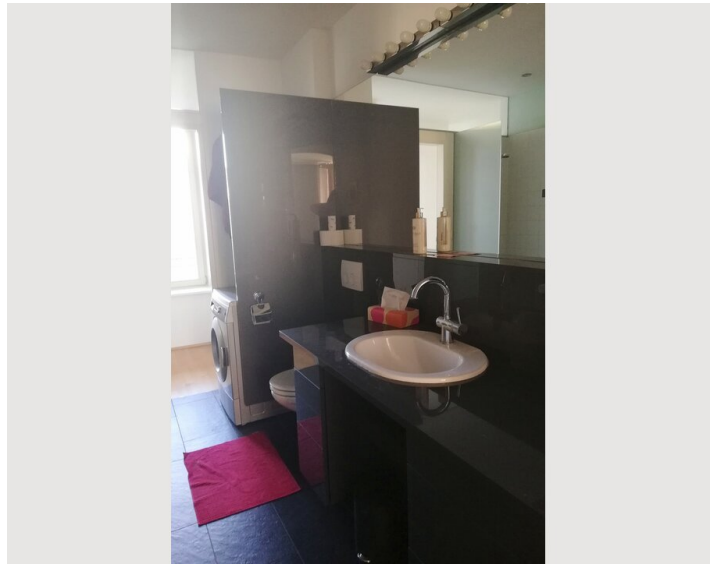
- Suitable for children
- Short-term parking zone subject to a charge
- Pets forbidden
- Smoking not allowed
- Private entrance
- Regular cleaning at extra cost

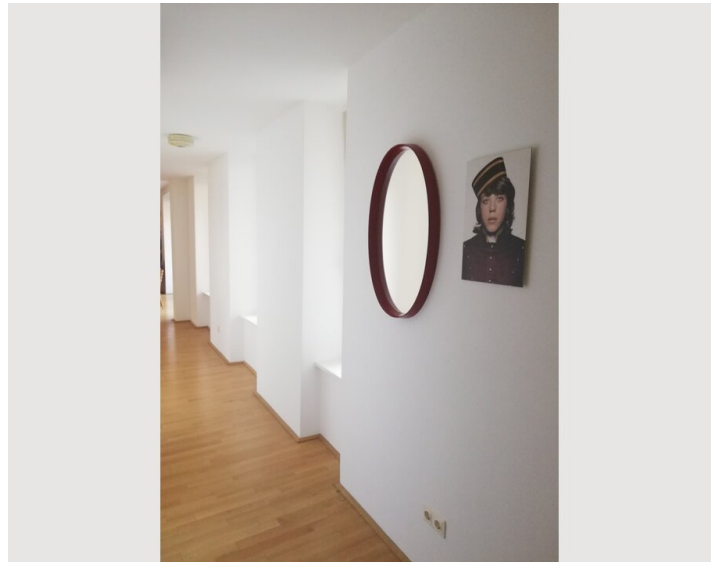
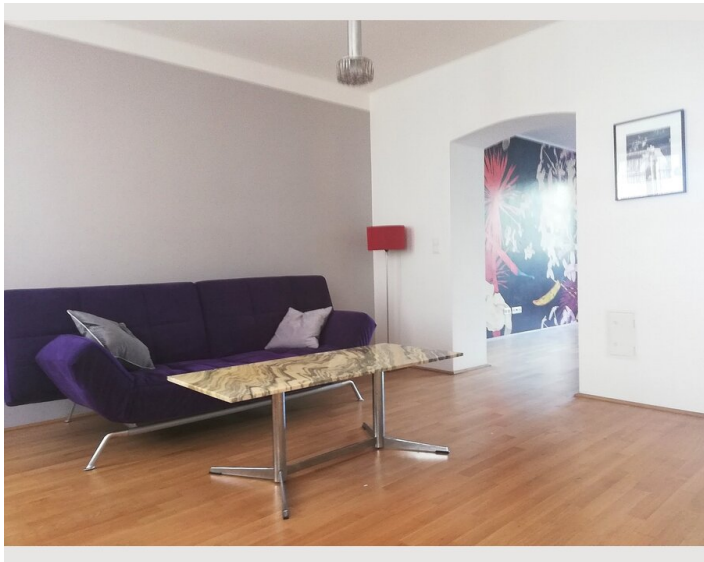
Additional services

- Regular cleaning

All prices are gross per month - billing is done directly with the lessor.

Picture gallery







Infrastructure



6 minutes walk or 5 minutes per bus/tram

Location

