



STUDIO APARTMENT, 1160 VIENNA

APARTMENT KLAUSGASSE

Object number: GLAR3

[View and rent online](#)

Period	12/07/ - 12/08/2026
Number of persons	2
Total incl. VAT.	€ 2.478,71
Security deposit	€ 1.900,00

The 32m²- apartment has been newly renovated in 2022.



Living space

32m²



Maximum occupancy

4 Persons



Complete accommodation [?]

1 Private bathroom 1 Living-Sleepingroom



2. floor



Check-in

18:00 - 10:29 Clock



Check-out

00:00 - 11:00 Clock

Sleeping options

Living & Sleeping



1x Double bed (1,80 m x 2 m)



1x Sofa bed (2 persons)

Description of accommodation

This apartment is designed for long-term stays (1+ months).

You can also rent it for longer than 6 months, but then we need to make a rent contract.

This apartment is newly renovated and ready for guests since the 25. 9. 2022. It's in the 2nd floor (no elevator!) of a house in a quiet street.

Distances (with public transport)

1st district: 20min

Airport: 50 min

Hauptbahnhof (Main Train Station): 27 min

Westbahnhof: 15 min

Supermarkets, Coffee Shops, Restaurants etc. are very close by.

Equipment & Features



Basic equipment

- Internet/Wifi
- Private washing machine
- Towels
- Vacuum cleaner
- Cleaning utensils
- TV
- Bedclothes
- Private toilet
- Iron & ironing board
- Hairdryer



First supply

- Toilet paper
- Soap
- Fridge filling on request
- shampoo
- Nespresso capsules



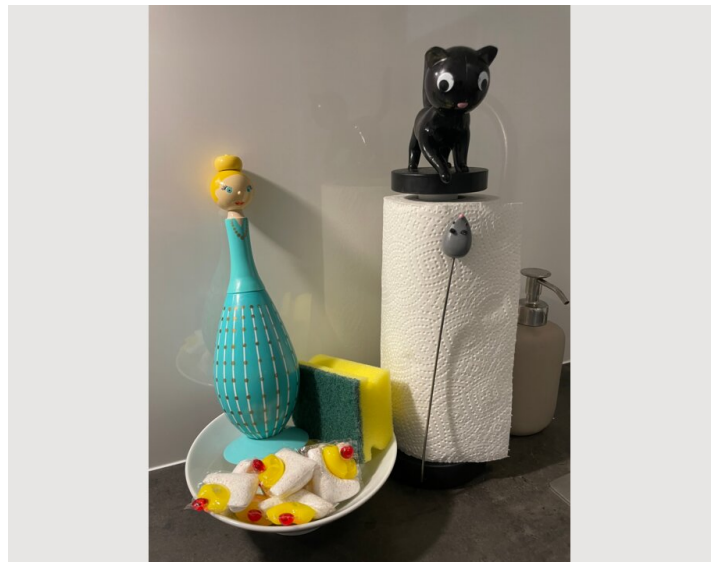
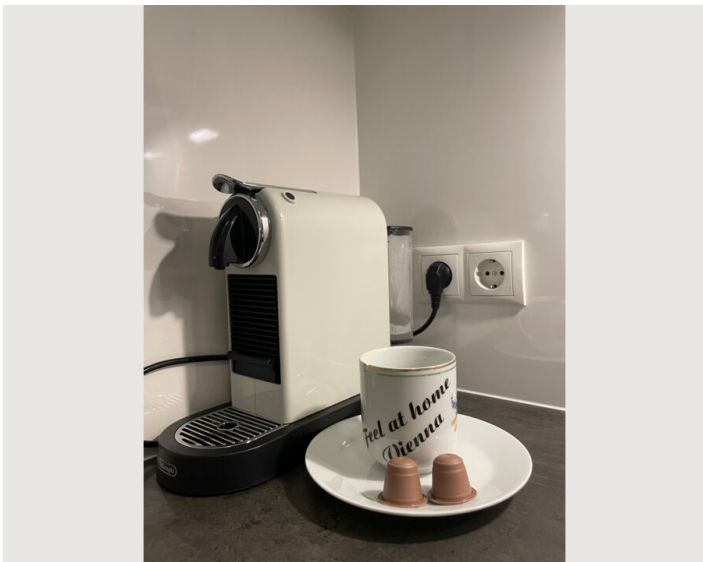
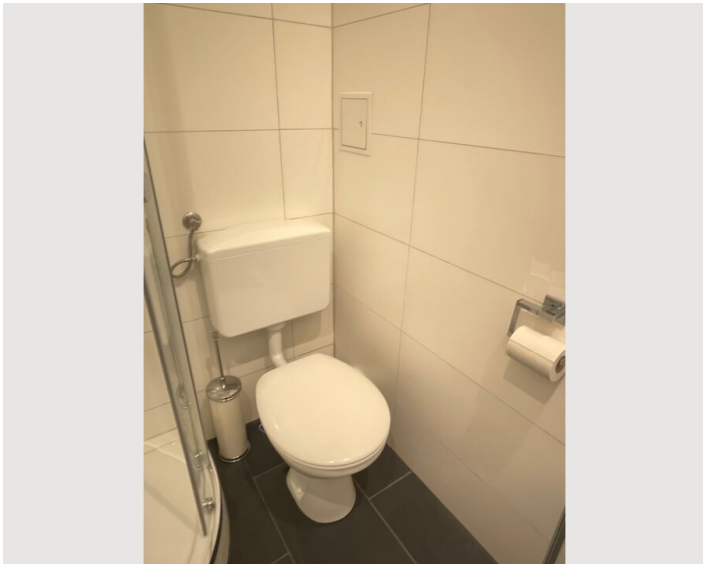
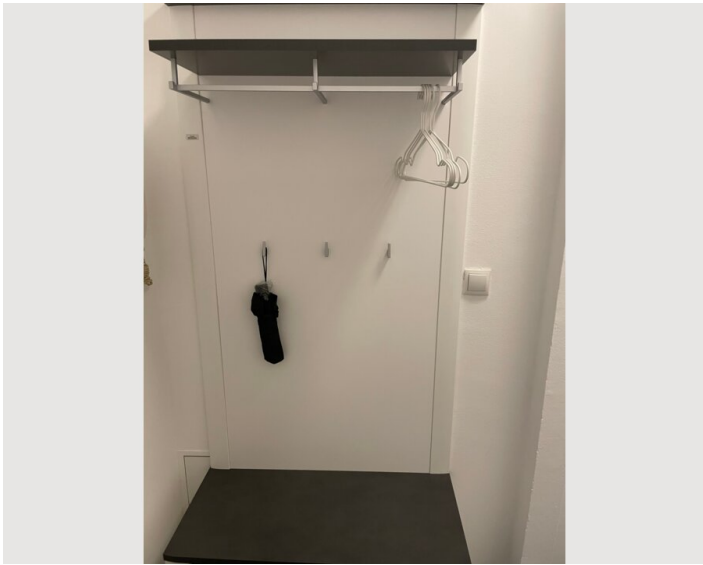
Kitchen

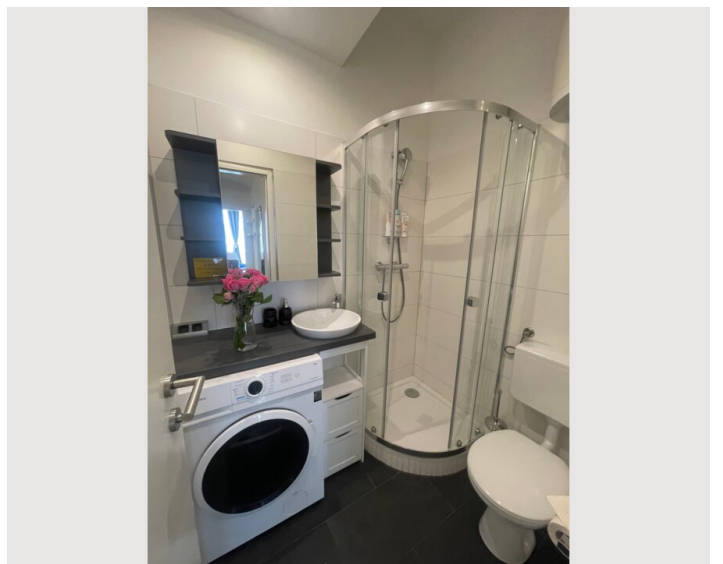
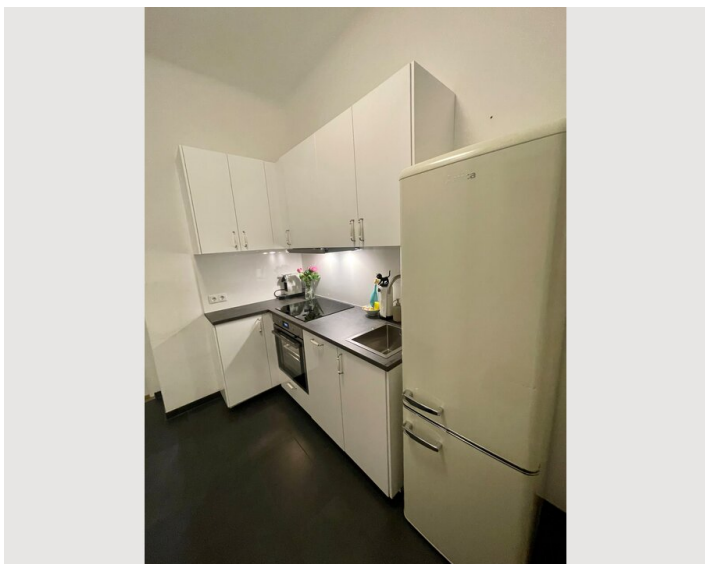
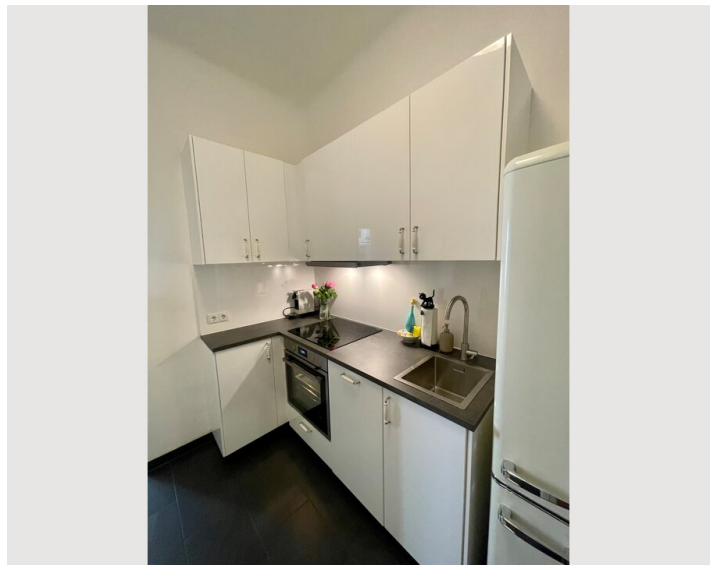
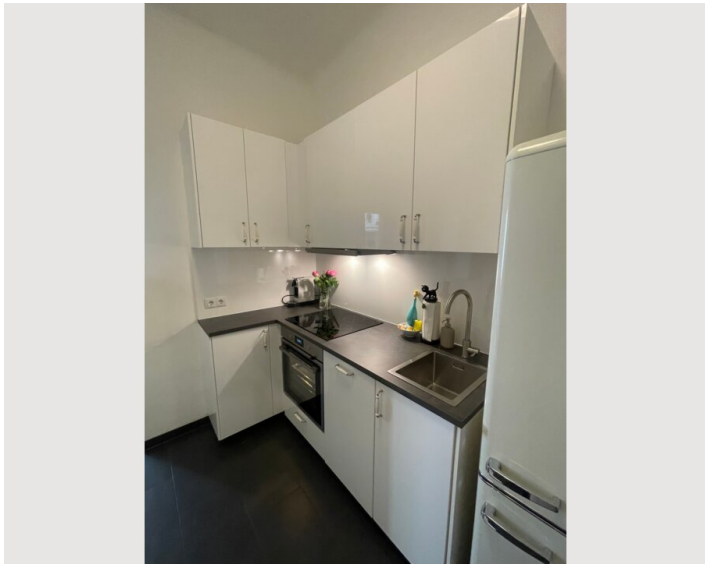
- Private kitchen
- Glasses/Tableware
- Dishwasher
- Cooking utensils
- Espresso machine
- Microwave

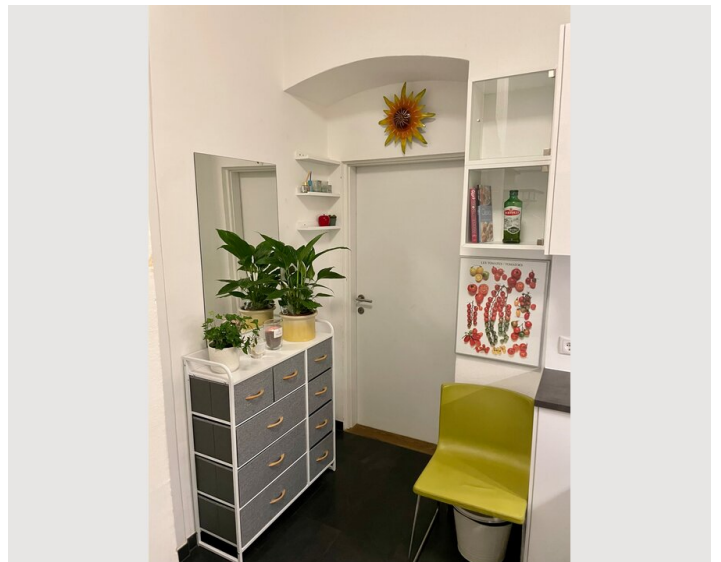
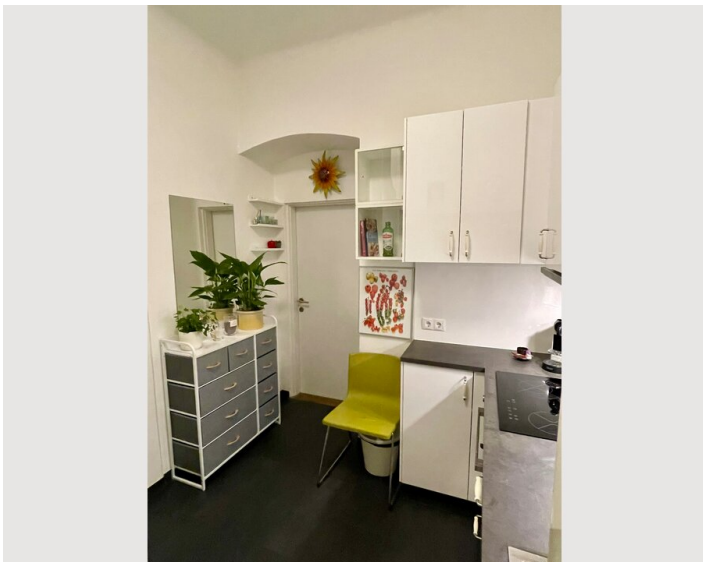
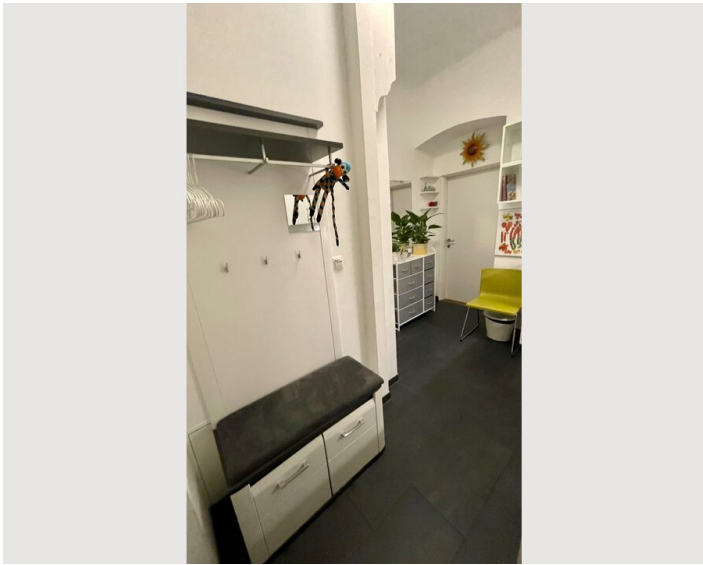
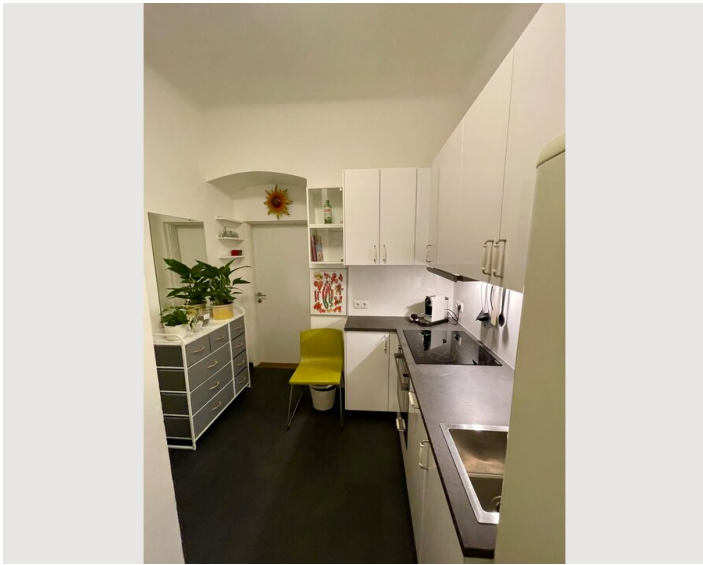
Informations

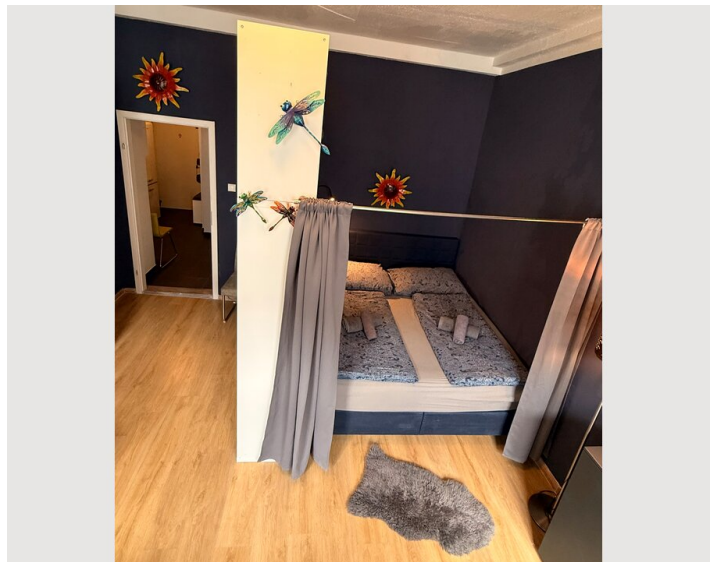
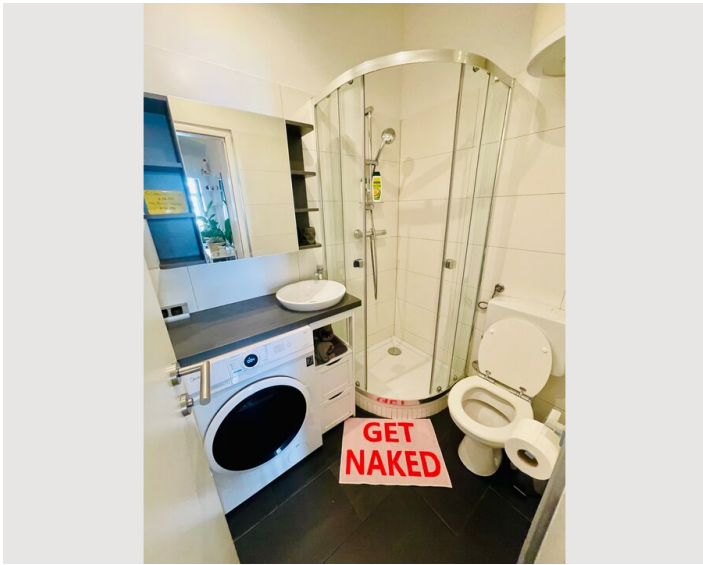
- Suitable for construction workers
- Smoking not allowed
- Desk/Workplace
- Pets on request
- Suitable for children
- Short-term parking zone subject to a charge
- Private entrance
- Bicycle room free of charge

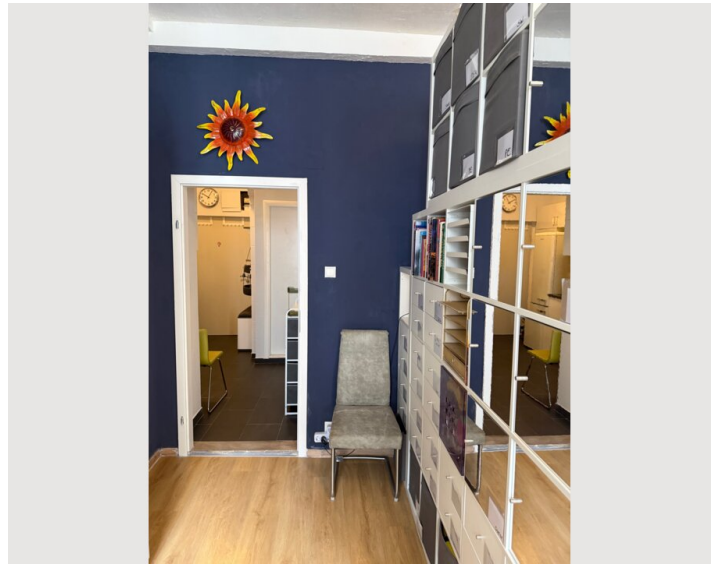
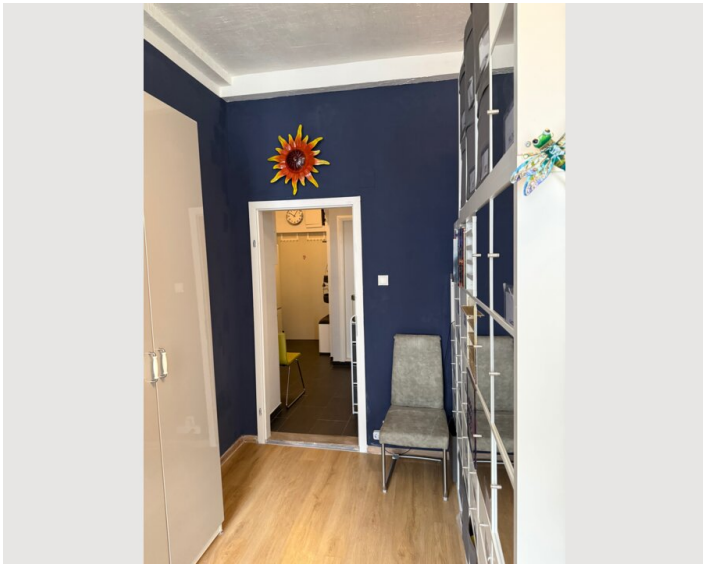
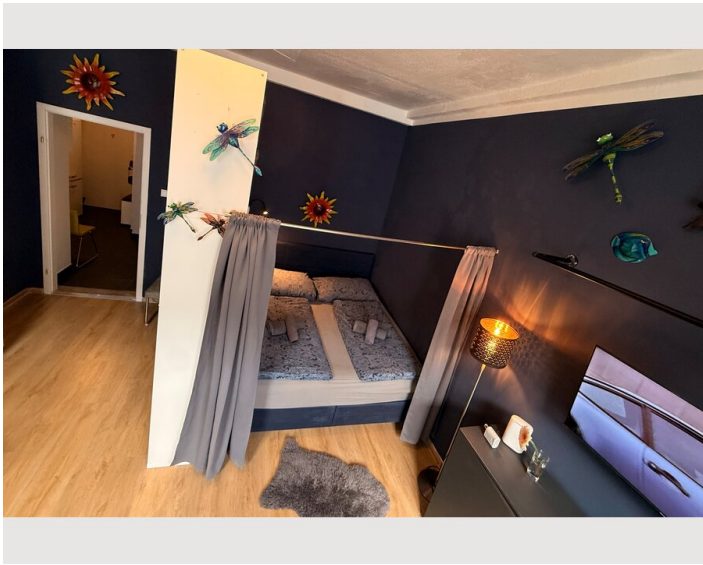
Picture gallery

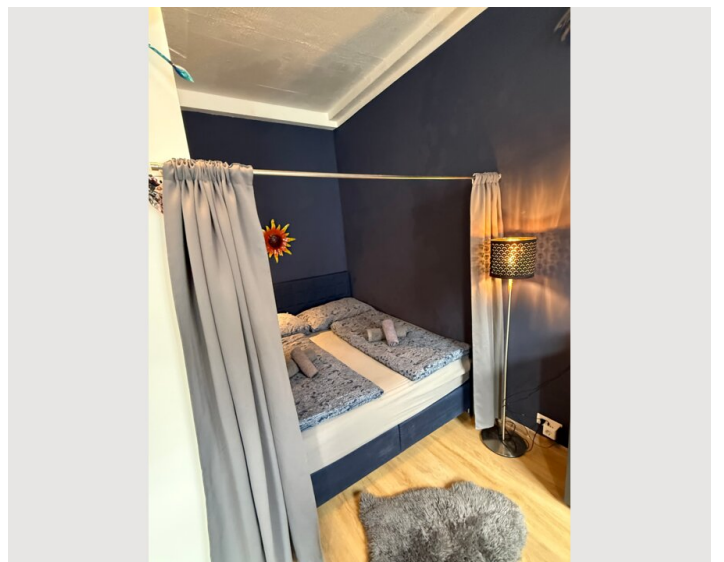
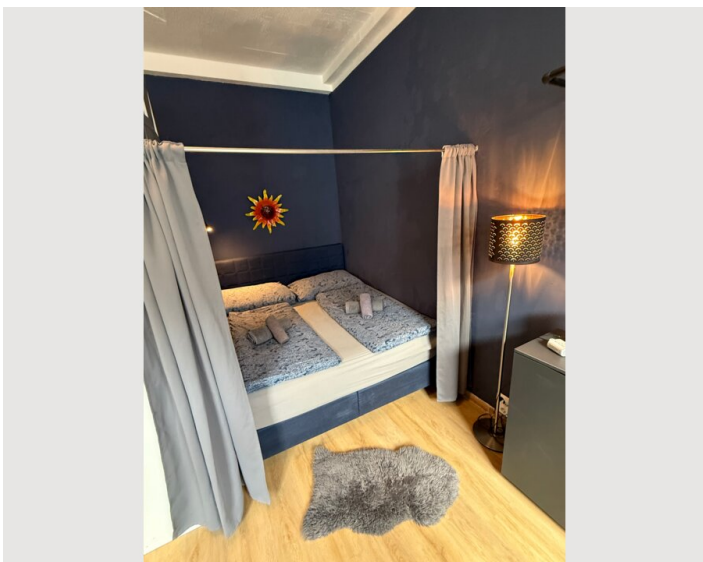




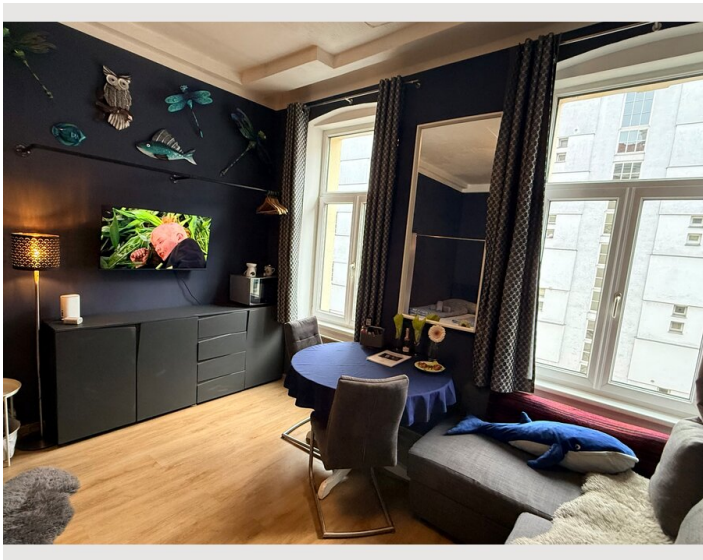












Infrastructure



Distances (with public transport)

1st district: 20min

Airport: 50 min

Hauptbahnhof (Main Train Station): 27 min

Westbahnhof: 15 min

Supermarkets, Coffee Shops, Restaurants etc. are very close by.

Location

