



STUDIO APARTMENT, 1100 VIENNA

## Central Station Premium M

Object number: LILA1

[View and rent online](#)

<b>Period</b>	30/07/ - 30/08/2025
<b>Number of persons</b>	2
<b>Total</b> incl. VAT.	€ 1.640,62
Security deposit	€ 1.300,00

Newly renovated studio with high quality furnishings. Central location in one of the longest pedestrian zones in Vienna. With the subway directly from your front door to Vienna's famous city center. The main train station is just a 5 minute walk away



### Living space

40m<sup>2</sup>



### Maximum occupancy

2 Persons



### Complete accommodation <sup>?</sup>

1 private bathroom 1 Living-Sleepingroom



### 2. floor

Elevator available



### Check-in

15:00 - 21:00 Clock



### Check-out

09:00 - 11:00 Clock

## Sleeping options

### Living and sleeping



1x Double bed (1,60 m x 2 m)



1x Sofa bed (1 person)

## Descripton of accommodation

The 40m<sup>2</sup> studio was renovated in 2023 and furnished to a high standard. The anteroom with wardrobe leads to the spacious living room and bedroom, which has been furnished according to a modern room concept with a king-size box spring bed, a pull-out couch and a combined dining or workdesk. The excellently equipped kitchen with dishwasher and espresso machine also shines there in its open design. You are welcome to prepare something tasty yourself or have something taken away or delivered from one of the numerous restaurants in the area. Of course, the apartment also has a private bathroom with toilet.

In the flat you will find high-speed internet and a smart TV. It is located on the 2nd floor of a newly renovated, classic building from the Viennese Wilhelminian era. The unique infrastructure of the immediate surroundings leaves nothing to be desired.

## Equipment & Features



### Basic equipment

- Internet/Wifi
- Private washing machine
- Towels
- Vacuum cleaner
- Cleaning utensils
- TV
- Bedclothes
- Private toilet
- Iron & ironing board
- Hairdryer



### First supply

- Toilet paper
- Soap
- Fridge filling on request
- shampoo
- Nespresso capsules



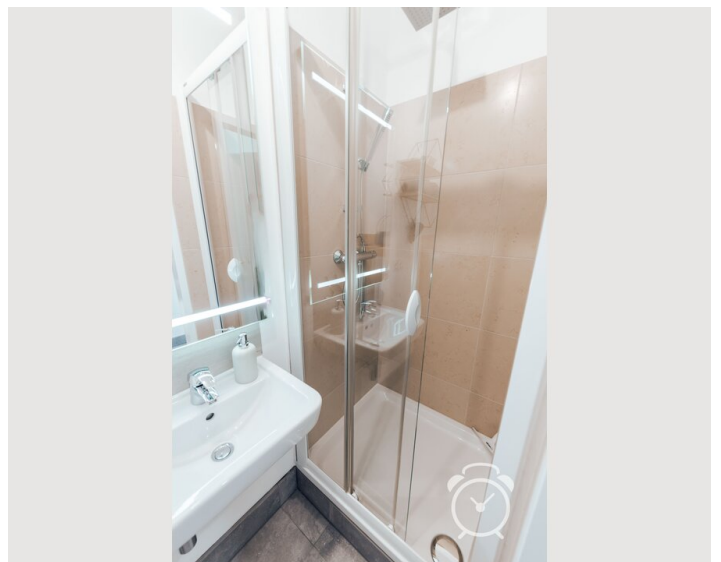
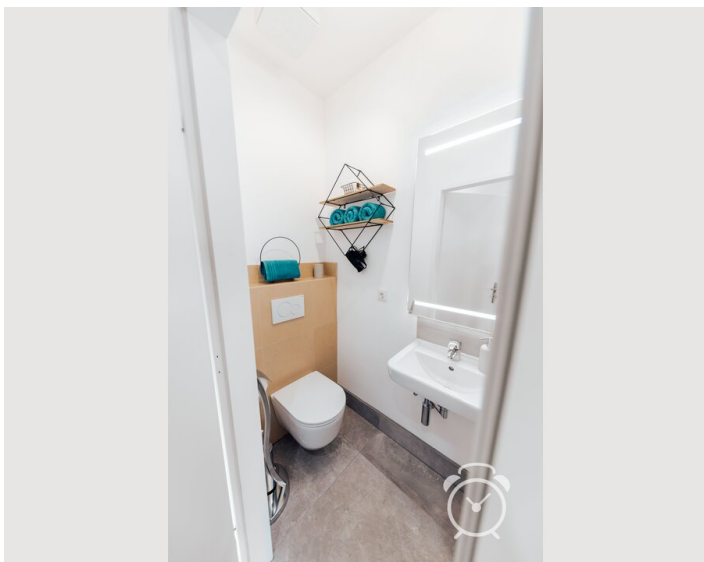
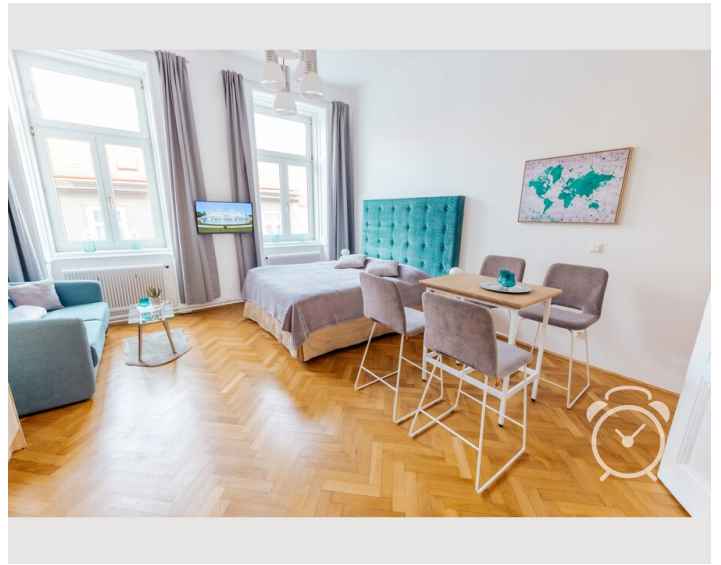
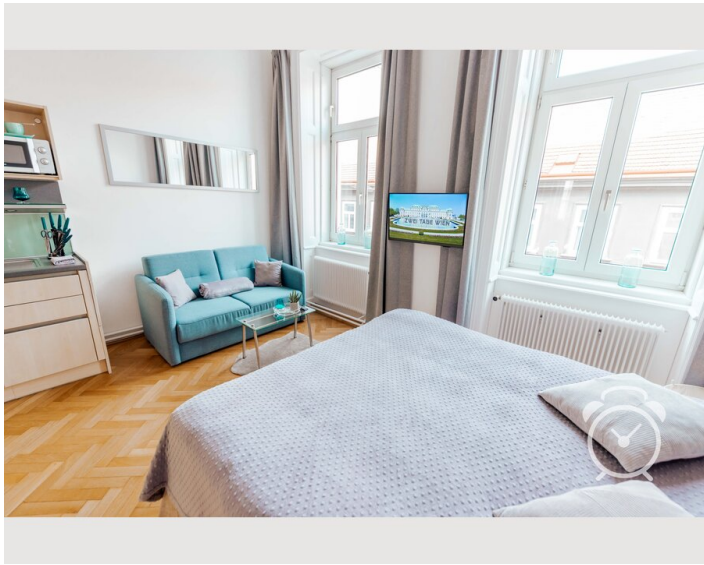
### Kitchen

- Private kitchen
- Glasses/Tableware
- Dishwasher
- Cooking utensils
- Espresso machine
- Microwave

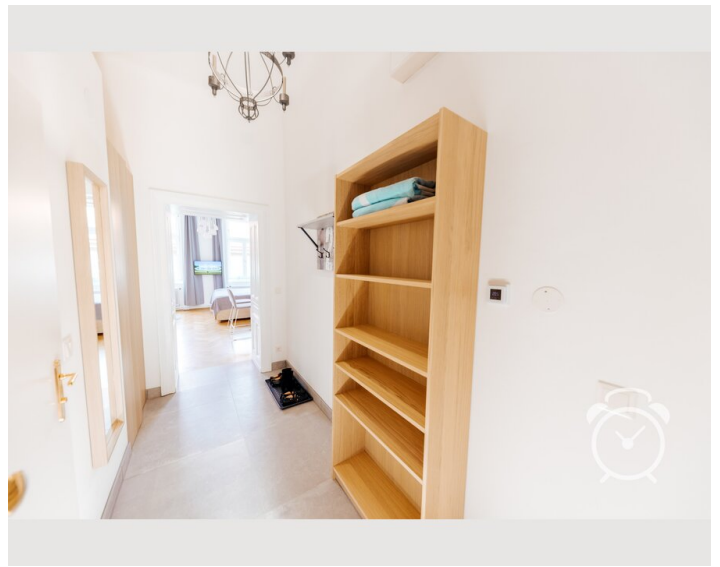
## Informations

- Suitable for children
- Short-term parking zone subject to a charge
- Pets on request
- Smoking not allowed
- Private entrance
- Regular cleaning at extra cost

## Picture gallery

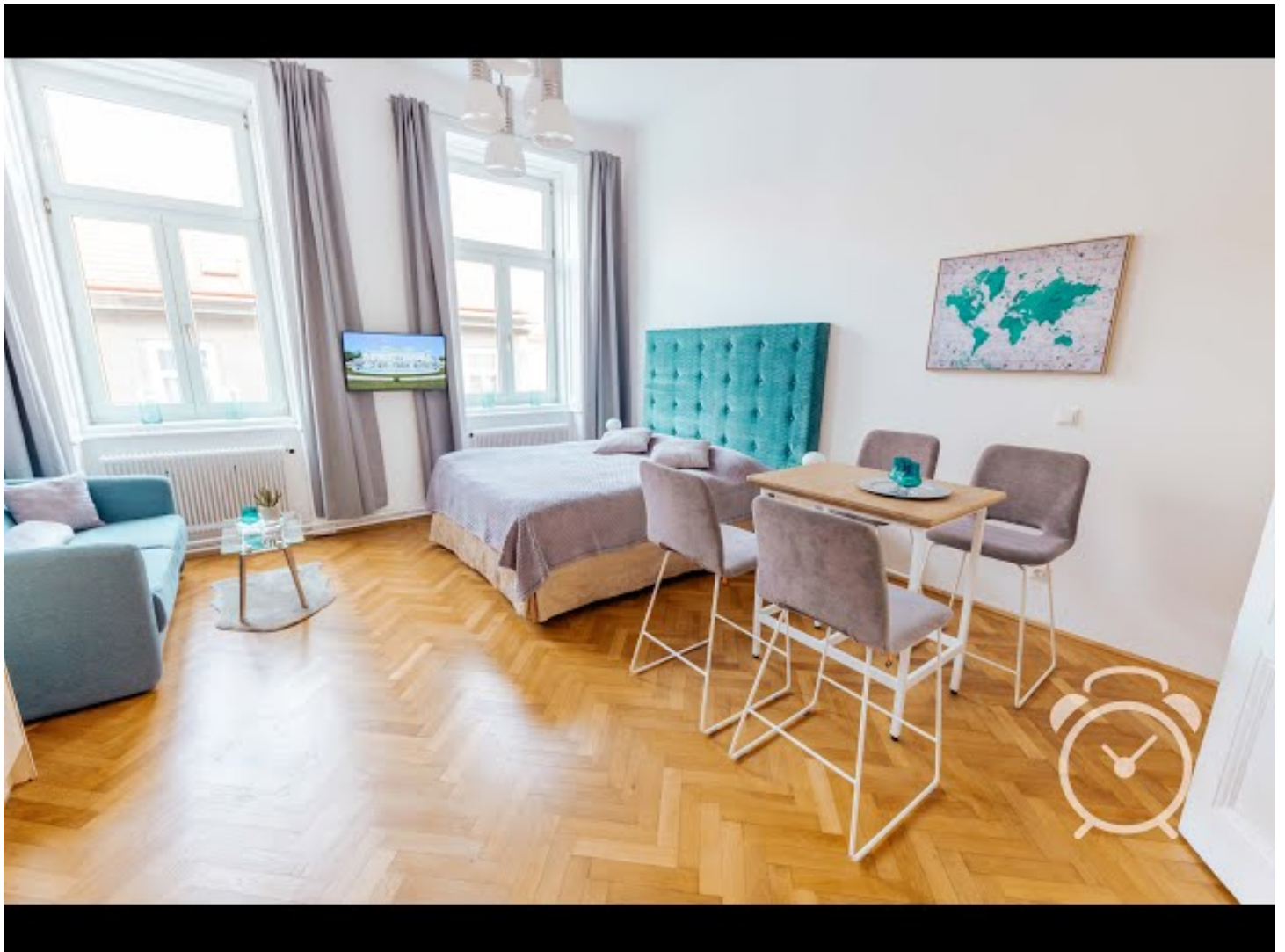






## Video

[Goto Video](#)



## Infrastructure



The new Vienna Central Station can be reached in just a few minutes with a short walk through the popular pedestrian zone.



Billa, Billa+, Spar, Interspar, Hofer, Lidl and many national and international specialties on one of the last Viennese markets in the pedestrian zone in front of the house.



Public: Direct connection from the main train station, 4 minutes away. By car about 20 minutes.



By subway (entrance in front of the house) 3 stops. By car 9 minutes.



Subway <1 minute, bus =1 minute, tram =2 minutes

All everyday necessities can be obtained in the directly surrounding pedestrian zone. Here you will find many shops, pharmacies, fitness centers and the country's most popular supermarkets. One of the last markets in Vienna with many national and international specialties as well as a variety of cafes, bars, breweries and restaurants in all price ranges round off the perfect infrastructure for your successful stay in Vienna. For children, the city's largest play and motor skills park is also just 3 minutes away.

The newly designed Vienna Central Station and the surrounding business campus are within walking distance, as are the famous Vienna Belvedere or one of the hippest roof terrace bars in the city with their breathtaking views. From the train station you can get directly to Vienna Airport. But it is also very easy to reach by car in 20 minutes.

The subway takes you directly from the front door (20m) in 7 minutes to Vienna's city center with its many famous magnificent buildings such as St. Stephen's Cathedral, the Opera or the Burgtheater. If you drive a few stops further, you can get to, among other places, the Vienna Prater and UNO City without changing trains. In the other direction you drive to the Oberlaa thermal baths with the large Laaerwald recreation area.

## Location

