



STUDIO APARTMENT, 1110 VIENNA

New, bright, quiet @Belvedere

Object number: EOSR1

[View and rent online](#)

Wonderful new apartment, fully furnished and equipped. Entrance hall, large living room area including kitchen, bedroom with partition wall, bathroom with shower and toilet, external blinds. Despite the central location, this property is quiet.

Period	25/06/ - 25/07/2026
Number of persons	2
Total incl. VAT.	€ 2.599,86
Security deposit	€ 2.000,00



Living space

36m²



Maximum occupancy

2 Persons



Complete accommodation [?]

1 Private bathroom 1 Living-Sleepingroom



11. floor

Elevator available



Check-in

10:30 - 20:00 Clock



Check-out

10:30 - 11:00 Clock

Sleeping options

Living & Sleeping



1x Double bed (1,80 m x 2 m)



1x Sofa bed (1 person)

Description of accommodation

The apartment has a large living room with a kitchenette.

The bedroom is separated from the living room by a wall. 2 large French doors lead out onto the terrace.

Perfect for 2 people, also suitable for 3, as the couch can be used to sleep.

The terrace on the 11th floor offers an unobstructed side view of St. Stephen's Cathedral. The building has its own fitness room, a common room with table tennis, and a bicycle and stroller storage room. Internet and cable TV are included.

Our guests can use the fitness room on the ground floor of the building free of charge. There is also an indoor parking space for bicycles and strollers.

Our guests are received personally by us. Immediately after the booking has been confirmed, we will transmit our mobile phone number to enable direct contact.

Equipment & Features



Basic equipment

- Balcony
- TV
- Bedclothes
- Private toilet
- Iron & ironing board
- Hairdryer
- Internet/Wifi
- Private washing machine
- Towels
- Vacuum cleaner
- Cleaning utensils



Wellness

- Fitness room



First supply

- Toilet paper
- Nespresso capsules
- Soap



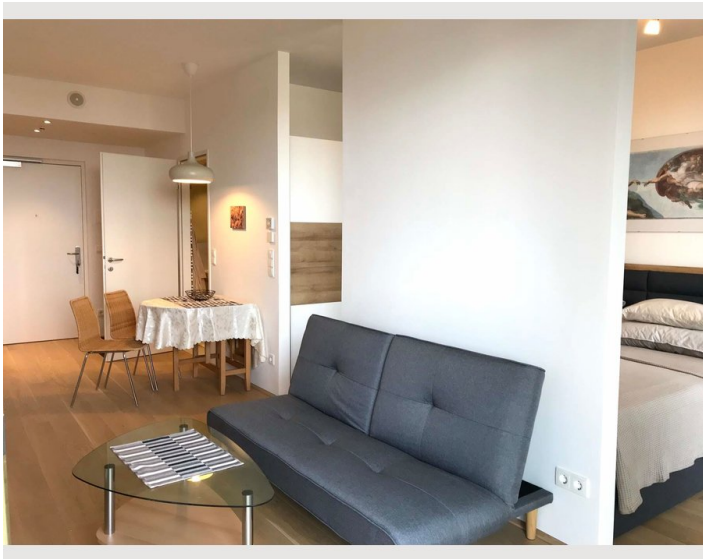
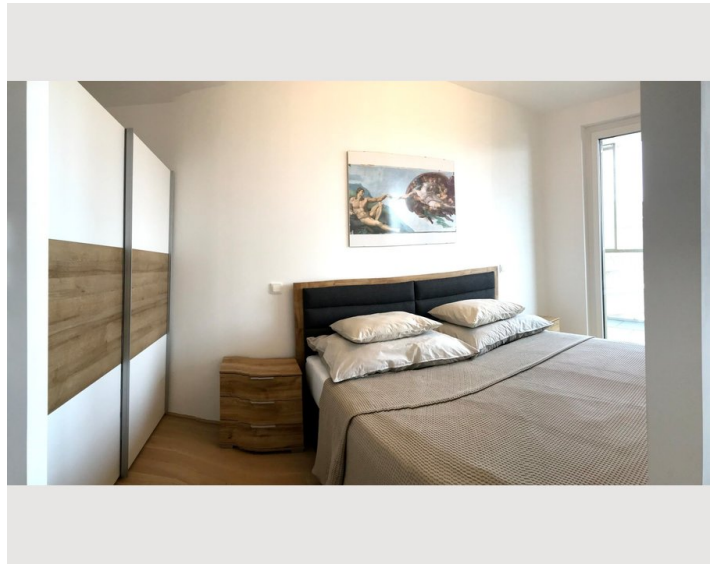
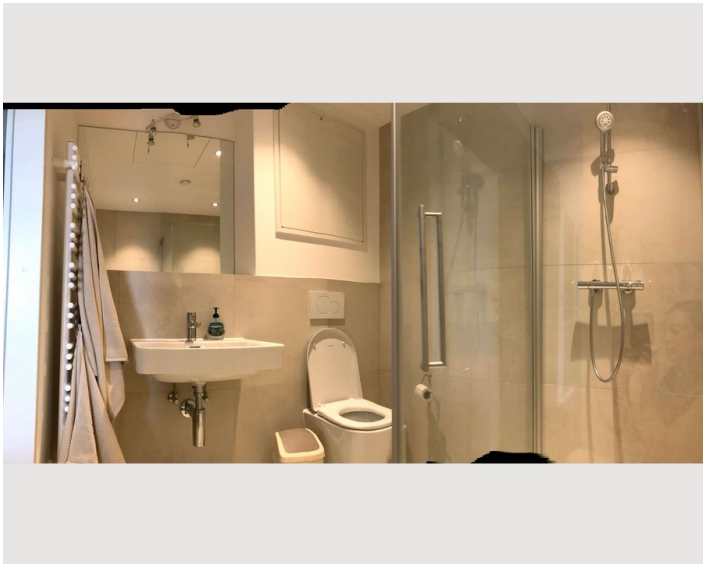
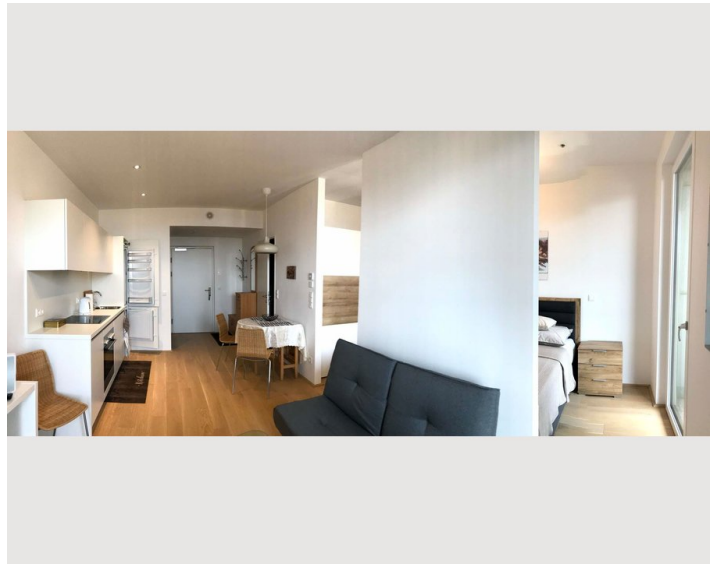
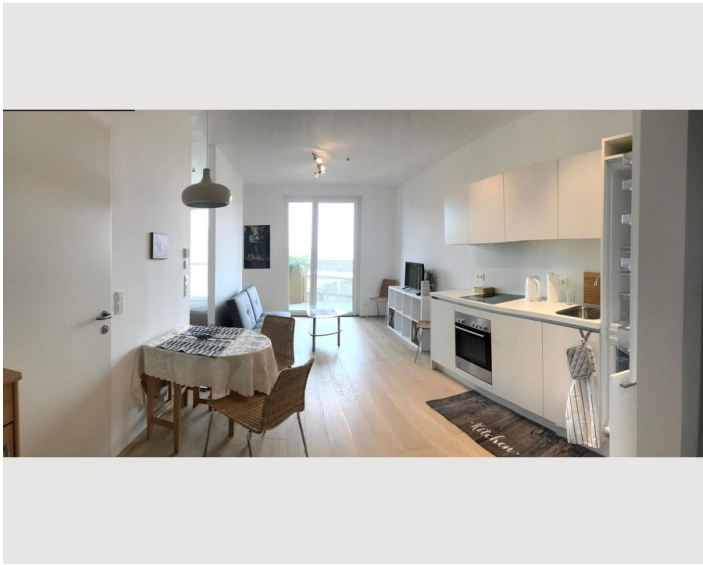
Kitchen

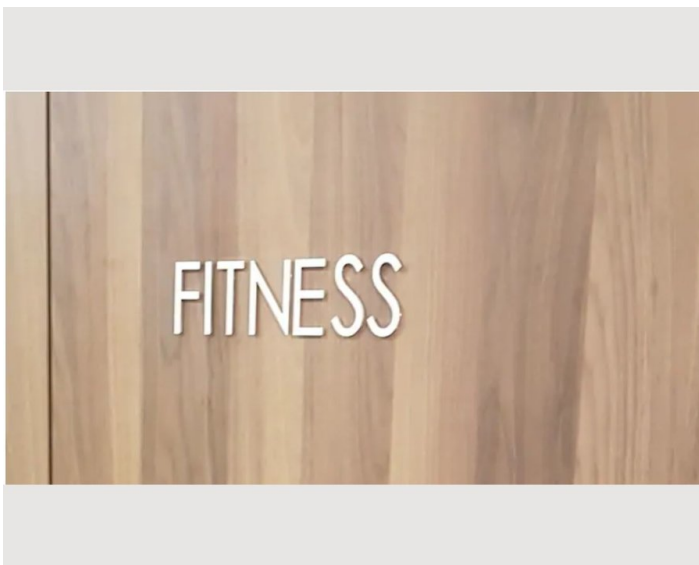
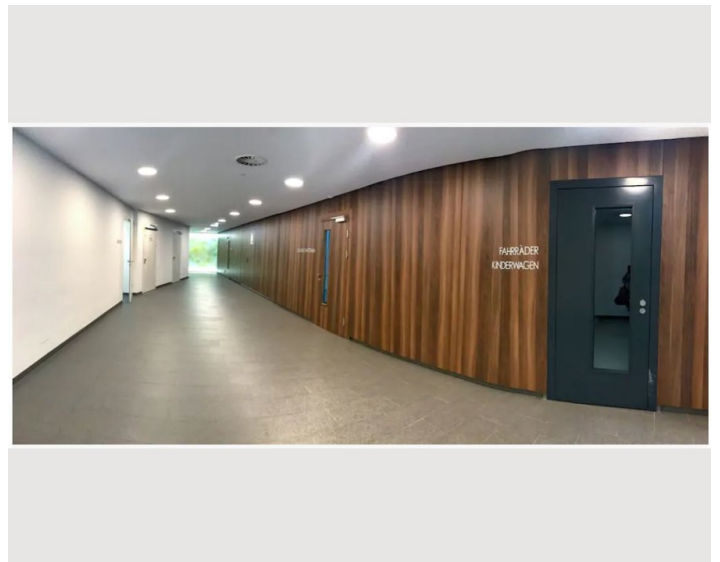
- Private kitchen
- Glasses/Tableware
- Dishwasher
- Cooking utensils
- Espresso machine

Informations

- Smoking not allowed
- Desk/Workplace
- Regular cleaning at extra cost
- Short-term parking zone subject to a charge
- Pets forbidden
- Bicycle room free of charge

Picture gallery





Infrastructure

 Main Railway Station

 @ Main Railway Station (open daily)

 Palace Belvedere

The apartment is in the middle of Quartier Belvedere, a new and up-and-coming neighborhood. Urban elegance, modern architecture and cool bars with great food define the Quartier Belvedere Central. Modern comfort in the immediate vicinity of the center (10-15 minutes on foot); 2min from Belvedere Palace.

Whether by car, train, bus, tram - this accommodation is in a great location.

2min. to the central station

2min. to tram 18, O, D

2min. to the Belvedere Palace

Location

