



3 ROOM APARTMENT, 1100 VIENNA

Central Station Premium L

Object number: LILE2

[View and rent online](#)

Period	17/06/ - 17/07/2025
Number of persons	2
Total incl. VAT.	€ 2.388,96
Security deposit	€ 1.900,00

Spacious apartment with centrally accessible rooms and variable beds. Additionally a cozy dining room and a study room. Luxurious ambience surrounded by the best infrastructure. Subway in front of the house and the main train station in 4 min. - walk



Living space

85m²



Maximum occupancy

6 Persons



Complete accommodation [?]

1 private bathroom 2 Separated bedrooms



2. floor

Elevator available



Check-in

14:00 - 22:00 Clock



Check-out

07:00 - 11:00 Clock

Sleeping options

Bedroom 1



1x Double bed (1,60 m x 2 m)



2x Single bed

Bedroom 2



1x Double bed (1,60 m x 2 m)



1x Single bed

Descripton of accommodation

The 85m² apartment was renovated to a high standard in 2023. The double doors lead you through a luxurious anteroom into two elegant and variable living and sleeping rooms that impress with a ceiling height of almost 3.5m. Equipped with a king-size box spring bed and a Joka pull-out couch, they invite you to linger. The cozy dining room offers space for up to eight people. There is also a separate work room with a desk. A very large kitchen with dishwasher and espresso machine leaves nothing to be desired. You are welcome to prepare something tasty yourself or have something taken away or delivered from one of the numerous restaurants in the area. Of course, the apartment also has a luxurious, private bathroom with its own washing machine and a second toilet.

In the apartment you will find high-speed internet and two 50" smart TVs. It is located on the 2nd floor of a newly renovated, classic building from the Viennese Wilhelminian era. The quiet bedroom in the inner courtyard hardly gives any indication of the unique infrastructure of the immediate surroundings .

Equipment features



Basic equipment

- Internet/Wifi
- Private washing machine
- Towels
- Vacuum cleaner
- Cleaning utensils
- TV
- Bedclothes
- Private toilet
- Iron & ironing board
- Hairdryer



First supply

- Toilet paper
- Soap
- Fridge filling on request
- shampoo
- Nespresso capsules



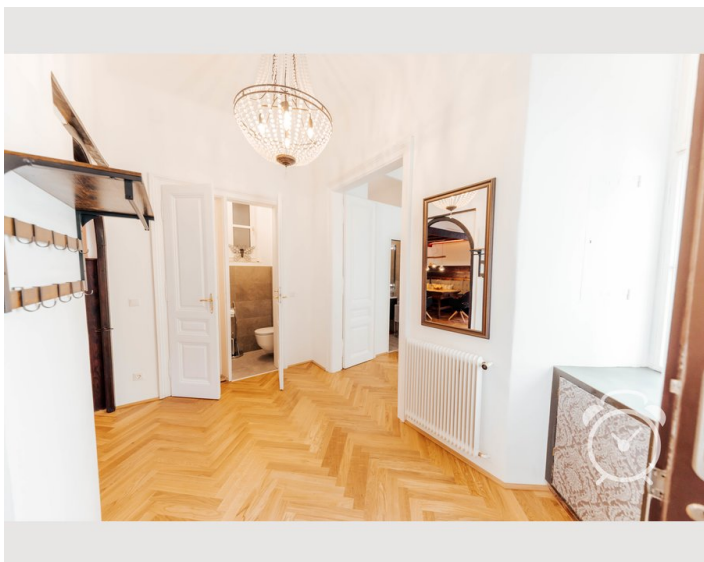
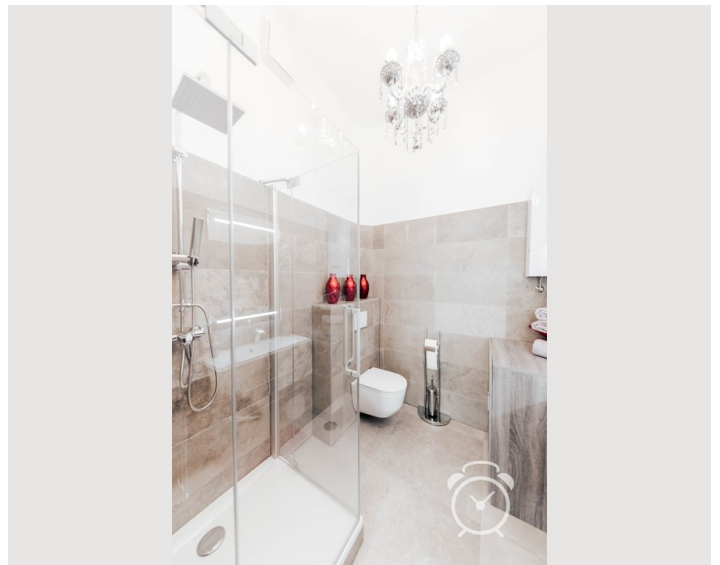
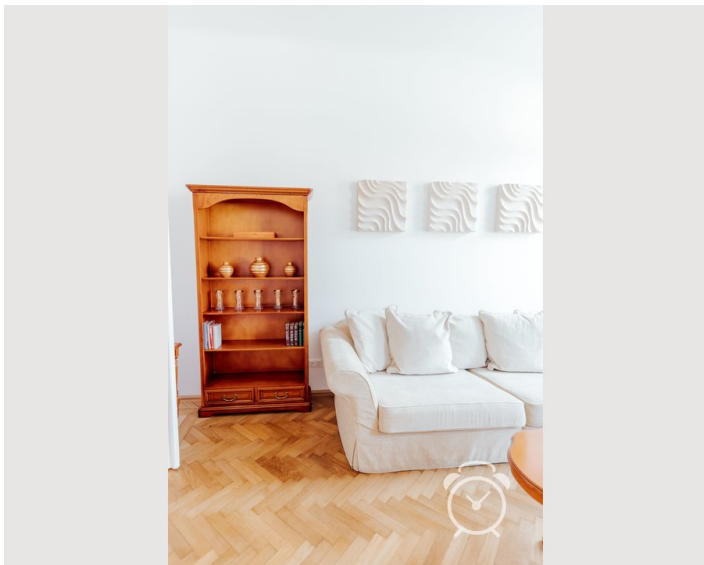
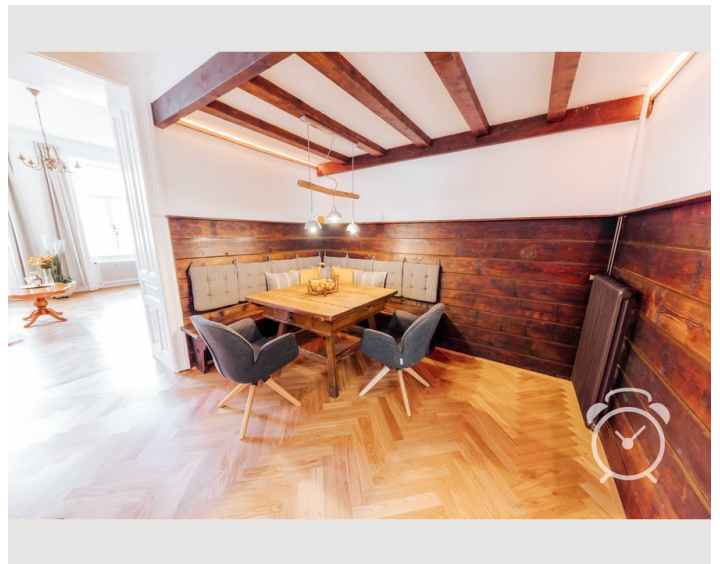
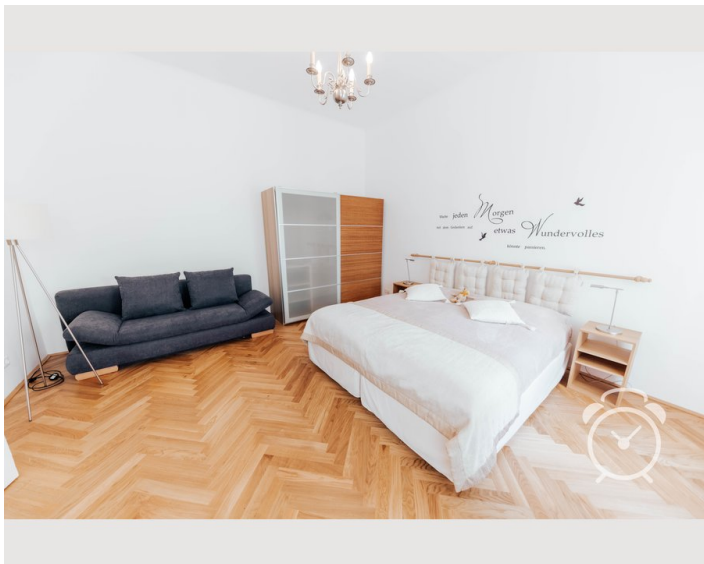
Kitchen

- Private kitchen
- Glasses/Tableware
- Dishwasher
- Cooking utensils
- Espresso machine
- Microwave

Informations

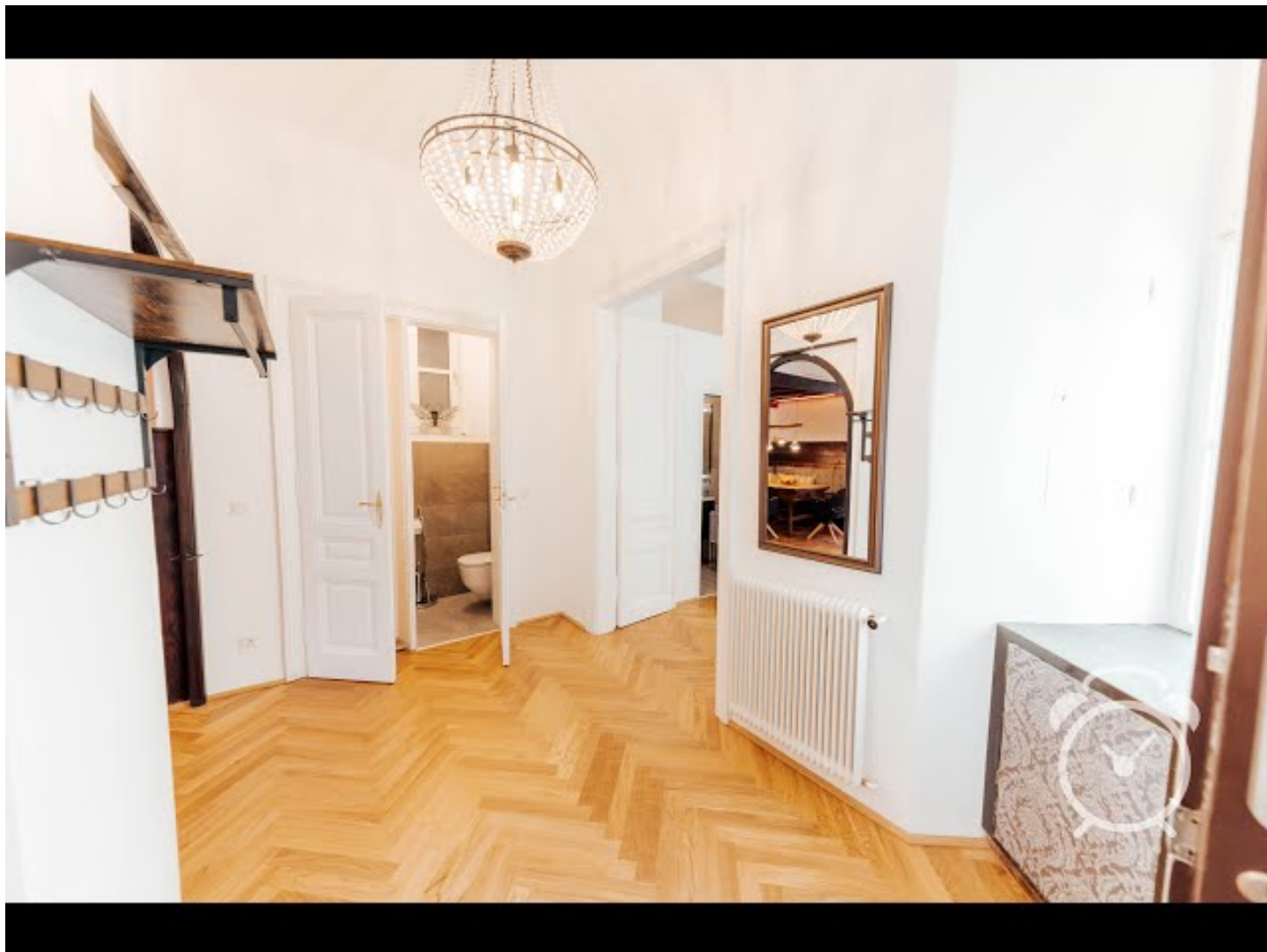
- Suitable for children
- Short-term parking zone subject to a charge
- Private entrance
- Regular cleaning at extra cost
- Smoking not allowed
- Desk/Workplace
- Pets on request

Picture gallery



Video

Goto Video



Infrastructure



The new Vienna Central Station can be reached in just a few minutes with a short walk through the popular pedestrian zone.



Billa, Billa+, Spar, Interspar, Hofer, Lidl and many national and international specialties on one of the last Viennese markets in the pedestrian zone in front of the house.



By subway (entrance in front of the house) 3 stops. By car 9 minutes.



Subway <1 minute, bus =1 minute, tram =2 minutes



Public: Direct connection from the main train station, 4 minutes away. By car about 20 minutes.

All everyday necessities can be obtained in the directly surrounding pedestrian zone. Here you will find many shops, pharmacies, fitness centers and the country's most popular supermarkets. One of the last markets in Vienna with many national and international specialties as well as a variety of cafes, bars, breweries and restaurants in all price ranges round off the perfect infrastructure for your successful stay in Vienna. For children, the city's largest play and motor skills park is also just 3 minutes away.

The newly designed Vienna Central Station and the surrounding business campus are within walking distance, as are the famous Vienna Belvedere or one of the hippest roof terrace bars in the city with their breathtaking views. From the train station you can get directly to Vienna Airport. But it is also very easy to reach by car in 20 minutes.

The subway takes you directly from the front door (20m) in 7 minutes to Vienna's city center with its many famous magnificent buildings such as St. Stephen's Cathedral, the Opera or the Burgtheater. If you go a few stops further, you can get to, among other places, the Vienna Prater and UNO City without changing trains. In the other direction you drive to the Oberlaa thermal baths with the large Laaerwald recreation area.

Location

