



4 ROOM APARTMENT AND MORE, 1100 VIENNA

## Central Station Premium XL

Object number: LILY3

[View and rent online](#)

<b>Period</b>	26/05/ - 26/06/2026
<b>Number of persons</b>	2
<b>Total incl. VAT.</b>	€ 4.050,04
Security deposit	€ 3.000,00

Luxurious apartment with up to 3 bedrooms and variable beds in a representative old building. Best infrastructure thanks to location in the pedestrian zone. The subway in front of the house and the main train station are only 4 minutes away.



### Living space

125m<sup>2</sup>



### Maximum occupancy

9 Persons



### Complete accommodation <sup>?</sup>

2 Private bathrooms 3 Separated bedrooms



### 2. floor

Elevator available



### Check-in

14:00 - 22:00 Clock



### Check-out

07:00 - 11:00 Clock

### Sleeping options

### Bedroom 1



1x Double bed (1,80 m x 2 m)



1x Sofa bed (2 persons)

### Bedroom 2



1x Double bed (1,60 m x 2 m)



1x Sofa bed (1 person)

### Bedroom 3



1x Double bed (1,60 m x 2 m)



1x Sofa bed (1 person)

## Descripton of accommodation

The representative 122m<sup>2</sup> apartment was renovated and luxuriously furnished in 2023. There are two separate entrances, which can be divided into a private and an office area, for example. Three centrally accessible, comfortable and variable living and sleeping rooms with king-size box spring beds and pull-out couches as well as a dining room and an office area with a desk. There are also two excellently equipped kitchens - each with a dishwasher and espresso machine.

A large bathroom next to the master bedroom as well as a second, smaller and a total of 3 toilets mean that it can easily be used by several people.

In the apartment, which is on the 2nd floor of the elevator, you will find high-speed internet and 3 smart TVs. Even if the living room with its large, comfortable couch and elegant period furniture - matching the Viennese Wilhelminian style building in which you are located - invites you to linger, you should not forget to explore the city.

The unique infrastructure of the immediate surroundings leaves nothing to be desired. The subway takes you directly from your front door in 7 minutes to downtown Vienna with its many famous magnificent buildings such as St. Stephen's Cathedral, the Opera or the Burgtheater. If you go a few stops further, you can get to, among other places, the Vienna Prater and UNO City without changing trains. In the other direction you drive to the Oberlaa thermal baths with the large Laaerwald recreation area.

### Equipment & Features

#### Basic equipment

- Internet/Wifi
- Private washing machine
- Towels
- Vacuum cleaner
- Cleaning utensils
- TV
- Bedclothes
- Private toilet
- Iron & ironing board
- Hairdryer

#### First supply

- Toilet paper
- Soap
- Fridge filling on request
- shampoo
- Nespresso capsules

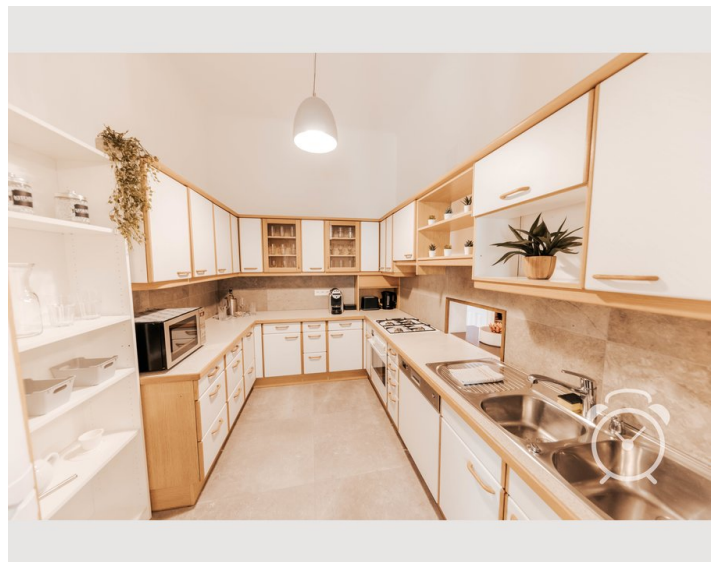
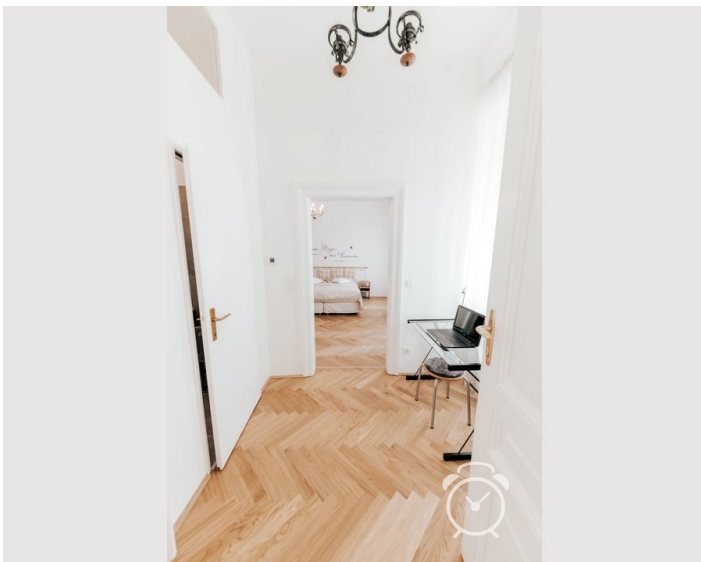
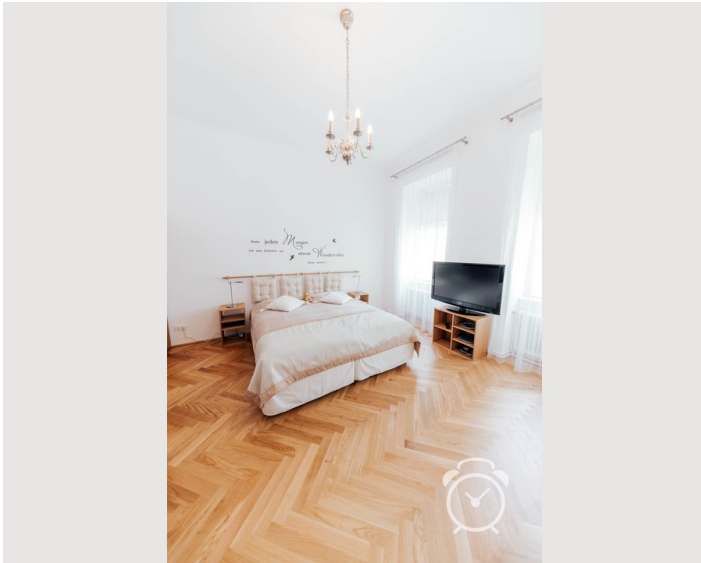
#### Kitchen

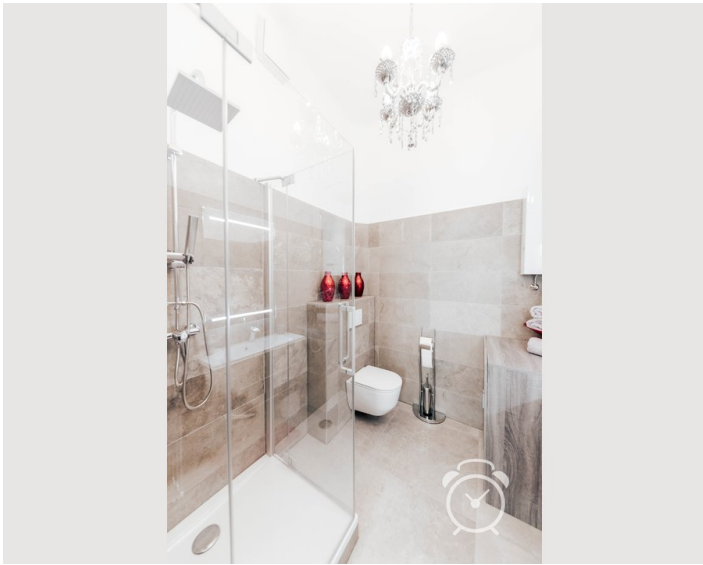
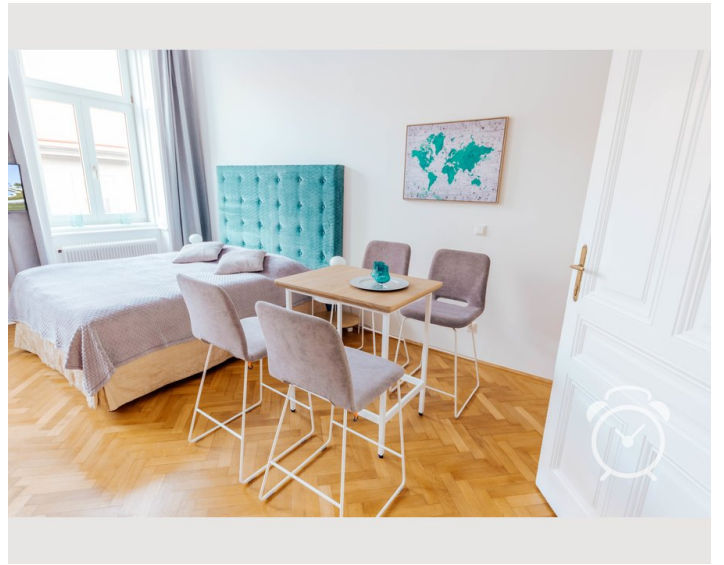
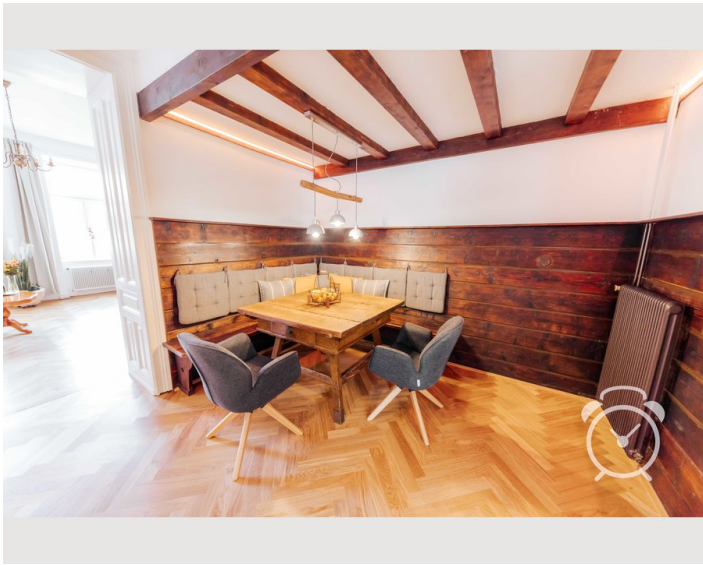
- Private kitchen
- Glasses/Tableware
- Dishwasher
- Cooking utensils
- Espresso machine
- Microwave

## Informations

- Suitable for children
- Short-term parking zone subject to a charge
- Private entrance
- Regular cleaning at extra cost
- Smoking not allowed
- Desk/Workplace
- Pets on request

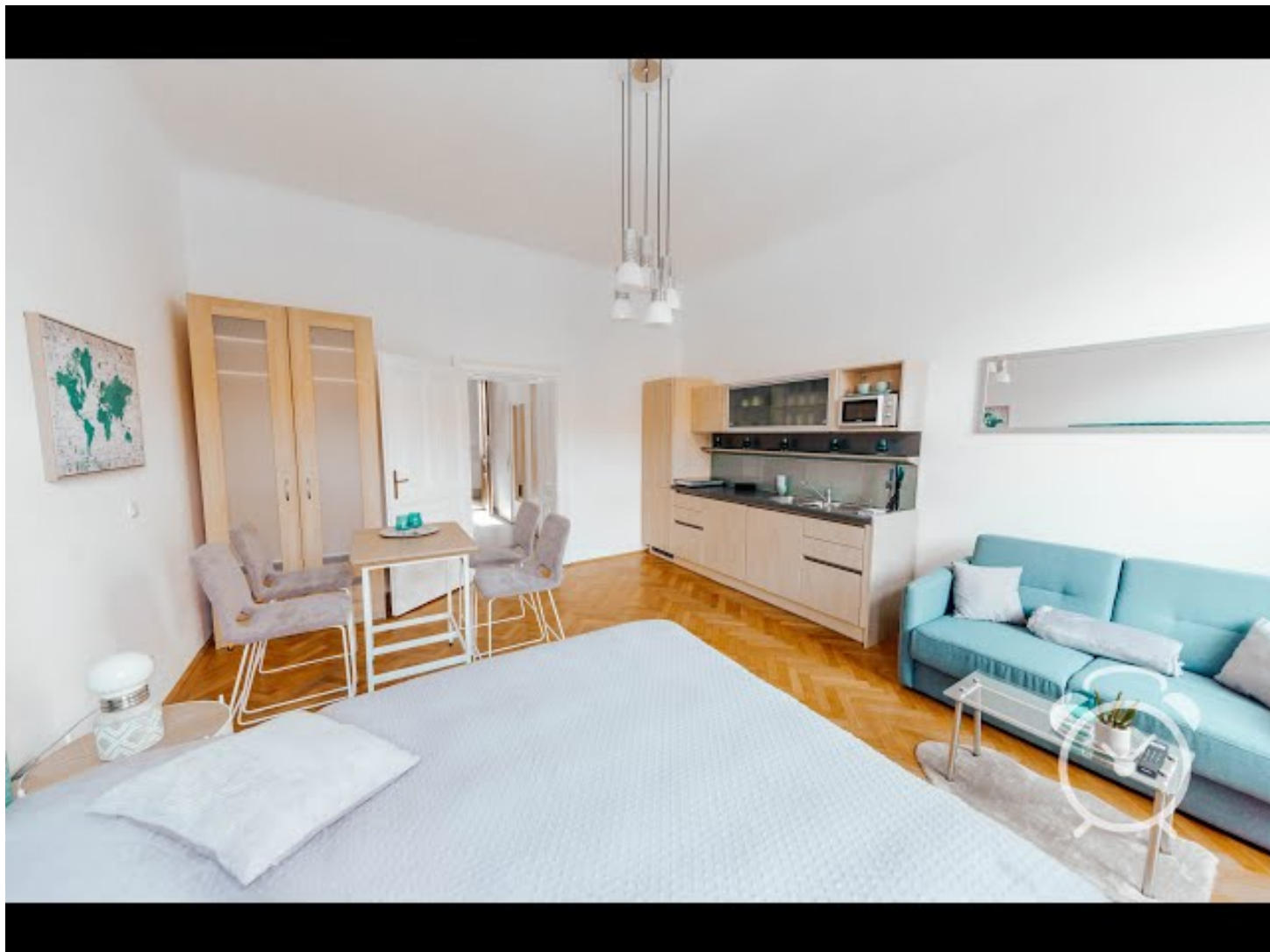
## Picture gallery










Video

Goto Video



## Infrastructure

-  The new Vienna Central Station can be reached in just a few minutes with a short walk through the popular pedestrian zone.
-  Billa, Billa+, Spar, Interspar, Hofer, Lidl and many national and international specialties on one of the last Viennese markets in the pedestrian zone in front of the house.
-  Public: Direct connection from the main train station, 4 minutes away. By car about 20 minutes.
-  By subway (entrance in front of the house) 3 stops. By car 9 minutes.
-  Subway <1 minute, bus =1 minute, tram =2 minutes

---

All everyday necessities can be obtained in the directly surrounding pedestrian zone. Here you will find many shops, pharmacies, fitness centers and the country's most popular supermarkets. One of the last markets in Vienna with many national and international specialties as well as a variety of cafes, bars, breweries and restaurants in all price ranges round off the perfect infrastructure for your successful stay in Vienna. For children, the city's largest play and motor skills park is also just 3 minutes away.

The newly designed Vienna Central Station and the surrounding business campus are within walking distance, as are the famous Vienna Belvedere or one of the hippest roof terrace bars in the city with their breathtaking views. From the train station you can get directly to Vienna Airport. But it is also very easy to reach by car in 20 minutes.

The subway takes you directly from the front door (20m) in 7 minutes to Vienna's city center with its many famous magnificent buildings such as St. Stephen's Cathedral, the Opera or the Burgtheater. If you go a few stops further, you can get to, among other places, the Vienna Prater and UNO City without changing trains. In the other direction you drive to the Oberlaa thermal baths with the large Laaerwald recreation area.

## Location

