

HOUSE, 1140 VIENNA

Oasis of peace in the greenery

Object number: MCKV1

[View and rent online](#)

The modern, bright house in hillside location offers a wonderful view over the idyllic Rosental. It is located in one of the most beautiful recreational areas of the city and is perfect for regeneration after a hectic working day.

Period	14/12/2025 - 14/01/2026
Number of persons	2
Total incl. VAT.	€ 3.157,94
Security deposit	€ 2.400,00



Living space

82m²



Maximum occupancy

3 Persons



Complete accommodation [?]

1 Private bathroom 1 Separated bedroom 1 Living-Sleepingroom



1. floor



Check-in

10:00 - 18:00 Clock



Check-out

10:00 - 18:00 Clock

Sleeping options

Sleeping room



1x Double bed (1,60 m x 2 m)

Living and sleeping



1x Sofa bed (1 person)

Descripton of accommodation

The open plan house has 82 m² of living space, 400 m² of garden, balcony and terrace. It has a central entrance hall, from which you can get to the kitchen-living room of about 20 m², bathroom with bathtub and separate toilet. A staircase leads to the second floor to the sleeping area with a large mirrored wardrobe, as well as another living room. From both the living room and the bedroom you can access a balcony with a magnificent view.

The fitted kitchen is fully equipped with ceramic hob, oven, dishwasher and fridge-freezer.

The entire first floor is uniformly tiled, the 1st floor is equipped with parquet flooring.

Heating and hot water is electric.

About 50 meters from the property are free parking spaces available. From the garden gate to the house you go over a natural stone staircase.

Translated with www.DeepL.com/Translator (free version)

Equipment & Features



Basic equipment

- Balcony
 - Garden
 - TV
 - Bedclothes
 - Private toilet
 - Vacuum cleaner
 - Cleaning utensils
 - Terrace
 - Internet/Wifi
 - Private washing machine
 - Towels
 - Parking on the road without time limit without any cost
 - Iron & ironing board
 - Hairdryer
-



First supply

- Toilet paper
 - Soap
 - Fridge filling on request
 - shampoo
 - Nespresso capsules
-



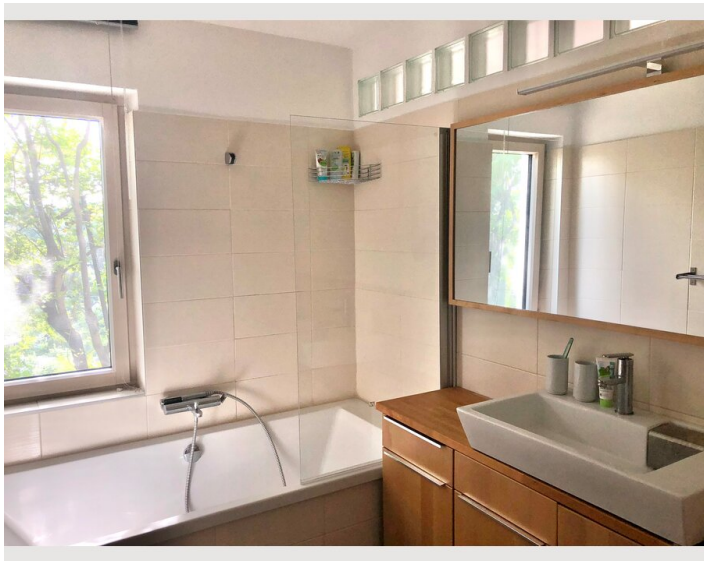
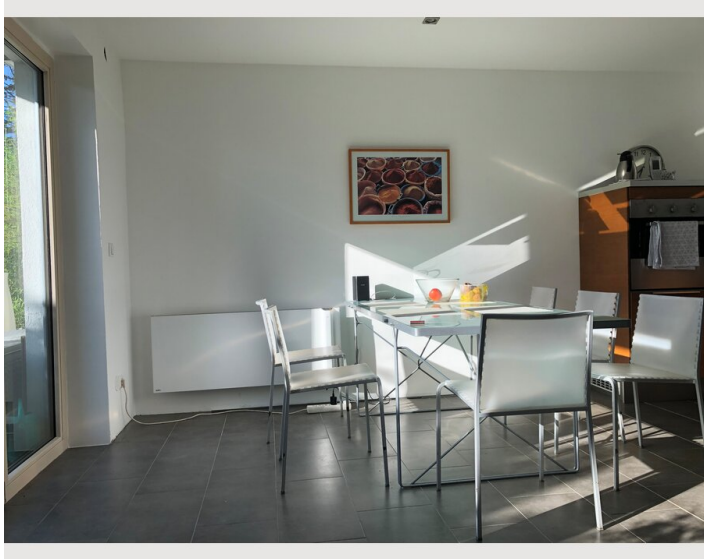
Kitchen

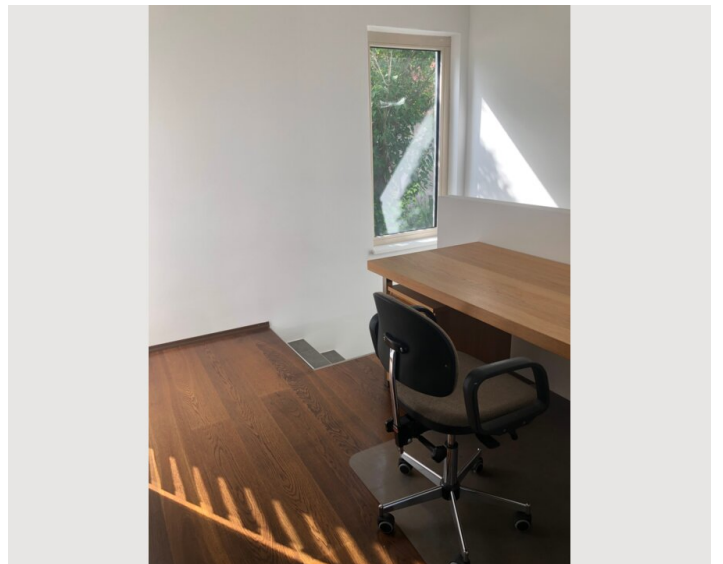
- Private kitchen
- Glasses/Tableware
- Dishwasher
- Cooking utensils
- Espresso machine

Informations

- Smoking not allowed
- Private entrance
- Desk/Workplace
- Regular cleaning at extra cost

Picture gallery





Infrastructure



The bus stop 47B Hüttelberg is about 800 meters away. From there you can get to the subway Hütteldorf in a few minutes.



Approx. 5 minutes by car from the corner of Linzerstraße/Rosentalgasse there are various shopping facilities.



From the Hütteldorf subway station, both the Westbahnhof (S50 - 9 min) and the Hauptbahnhof (S80 - 16 min) can be reached in a few minutes by public transportation.



From the subway Hütteldorf the center (Karlsplatz) can be reached by subway in 18 minutes.

In general, by car you can reach in a few minutes supermarkets, pharmacies, banks, subway station, ... on foot everything is possible, but extends the travel times. Well suited is a combination with a park-and-ride lot at the subway station Hütteldorf (discounted monthly tickets).

There are many hiking trails and mountain bike routes in the immediate vicinity. Well-known excursion destinations such as the Steinhofgründe, the Otto Wagner Church, the Dehnepark or the Jubiläumswarte are nearby as well as the two restaurants Großes or Kleines Schutzhaus Rosental. 5 minutes away by car there is also an indoor swimming pool plus sauna and outdoor pool.

Location

