

2 ROOM APARTMENT, 5020 SALZBURG

Central and quiet flat with a view of the greenery

Object number: VHLC1

[View and rent online](#)

Period	12/12/2025 - 12/01/2026
Number of persons	2
Total incl. VAT.	€ 1.823,18
Security deposit	€ 1.300,00

Central, beautiful flat with a view of the greenery. The flat is 12 minutes walk from the old town, 5 minutes to the main university and 5 minutes to Nawi.a



Living space

60m²



Maximum occupancy

2 Persons



Complete accommodation [?]

1 Private bathroom 1 Separated bedroom



2. floor

Elevator available



Check-in

13:00 - 20:00 Clock



Check-out

09:00 - 12:00 Clock

Sleeping options

Sleeping room



1x Double bed (1,80 m x 2 m)

Description of accommodation

The flat has two spacious rooms - a living room and a bedroom as well as a kitchen, a bathroom with shower and bidet and an extra toilet. The living room has a dining area, a sofa with a small table and a bookcase, the bedroom has a double bed with a size of 160x200cm. The kitchen has all the necessary utensils such as pans, pots, plates, cutlery, glasses, cups and a kettle. Towels and bed linen are also provided. In the bathroom there is a washing machine and a hairdryer. In addition, there is a balcony with seating and a sun lounger. The flat looks out into the greenery and is in an absolutely quiet location.

Equipment & Features



Basic equipment

- Balcony
- Private washing machine
- Towels
- Vacuum cleaner
- Hairdryer
- Internet/Wifi
- Bedclothes
- Private toilet
- Iron & ironing board



First supply

- Toilet paper
- Soap



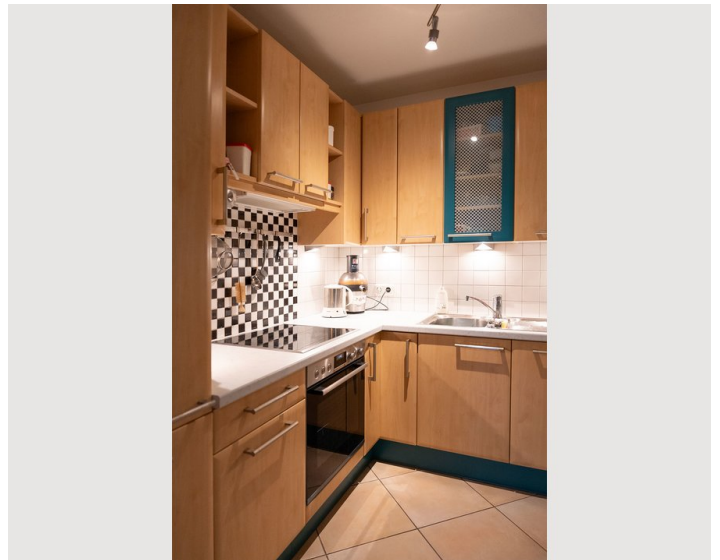
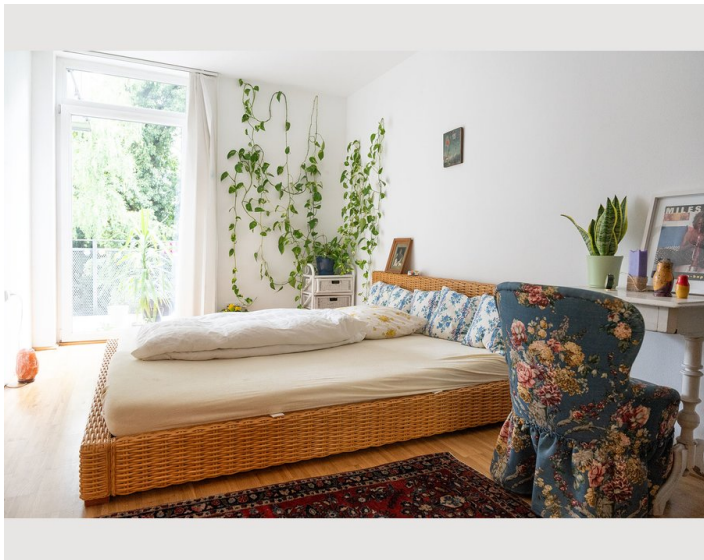
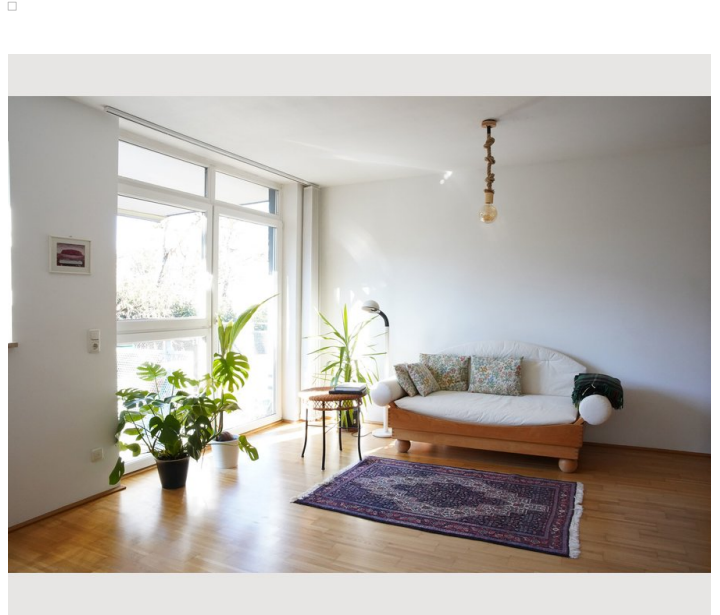
Kitchen

- Private kitchen
- Glasses/Tableware
- Cooking utensils

Informations

- Smoking not allowed
- Free short-term parking zone
- Pets on request
- Bicycle room free of charge

Picture gallery



Infrastructure



5 minutes walking distance



12 minutes walking distance



800 meters

The flat is a 12-minute walk from the old town, 7 minutes to the main university and 5 minutes to Nawi. 800 metres away is a shopping centre with grocery shops, a pharmacy and a drugstore, as well as restaurants. There is an outdoor pool and an indoor pool within a two-minute walk. The nearest bus stop is a 5-minute walk away, the bus goes directly to the centre and the train station.

Location

