



3 ROOM APARTMENT, 1160 VIENNA

## Artsy 2 BR Apartment

Object number: CRFD1

[View and rent online](#)

<b>Period</b>	05/04/ - 05/05/2026
<b>Number of persons</b>	2
<b>Total incl. VAT.</b>	€ 3.647,58
Security deposit	€ 2.800,00

My flat has 2 separate bedrooms, 1 light-flooded living room and 1 blue kitchen. It is a mix of modern & vintage and I love art. There is a small, fine bathroom with a spacious shower and 1 separate WC



### Living space

82m<sup>2</sup>



### Maximum occupancy

5 Persons



### Complete accommodation <sup>?</sup>

1 Private bathroom 2 Separated bedrooms



### 2. floor



### Check-in

15:00 - 18:00 Clock



### Check-out

09:00 - 11:00 Clock

## Sleeping options

### Bedroom 1



1x Double bed (1,60 m x 2 m)

### Bedroom 2



1x Double bed (1,60 m x 2 m)



1x Bunk bed

## Descripton of accommodation

You will love my flat because it is cosy, light-flooded, modern and charming. It is located near the hip Yppenviertel in a multicultural neighbourhood. The Brunnenmarkt is within walking distance. The Gürtel with its numerous bars and concert venues is just around the corner. The picturesque Spittelberg with its small alleyways is home to Vienna's most beautiful Christmas market. Traditional Viennese wine taverns can also be found nearby.

## Equipment & Features



### Basic equipment

- Garden sharing
- Music system/docking station
- Bedclothes
- Private toilet
- Cleaning utensils
- Internet/Wifi
- Private washing machine
- Towels
- Vacuum cleaner
- Hairdryer



### First supply

- Toilet paper
- Soap
- shampoo
- Nespresso capsules



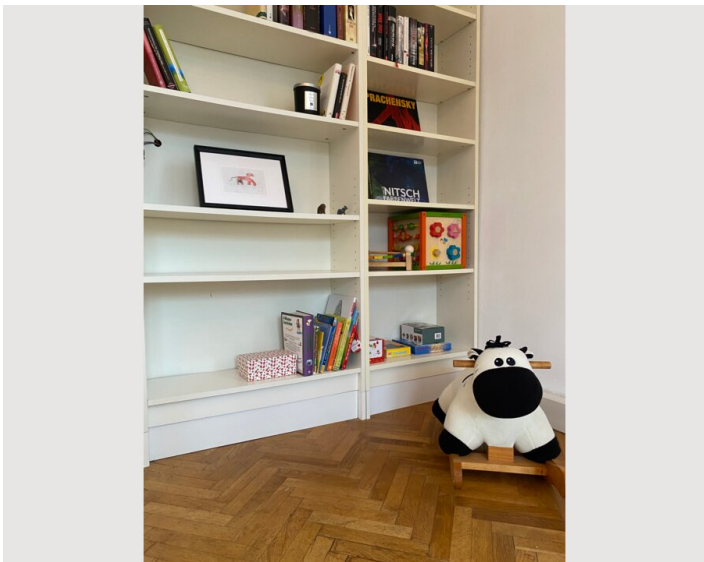
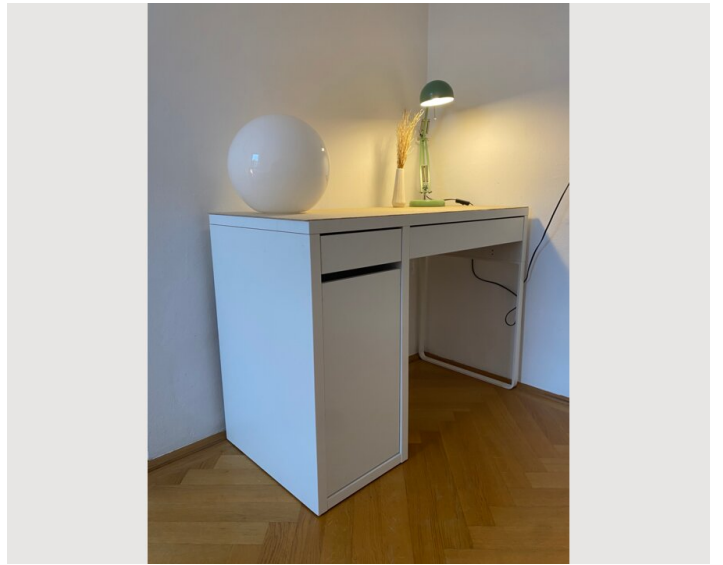
### Kitchen

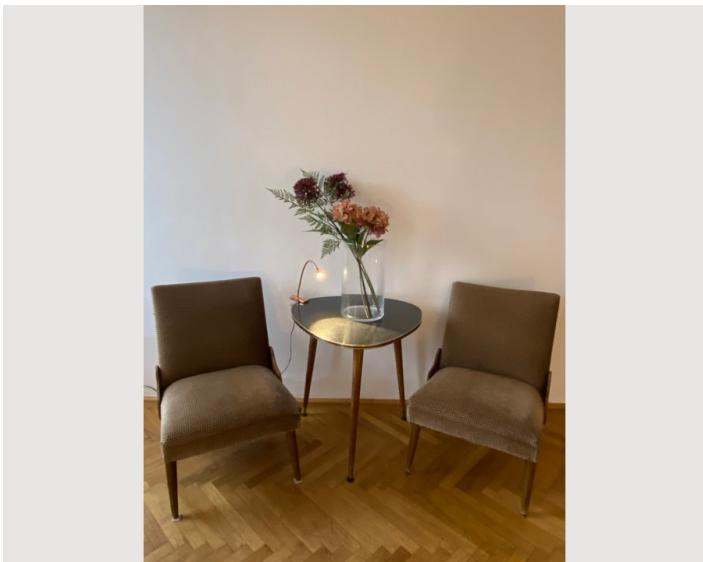
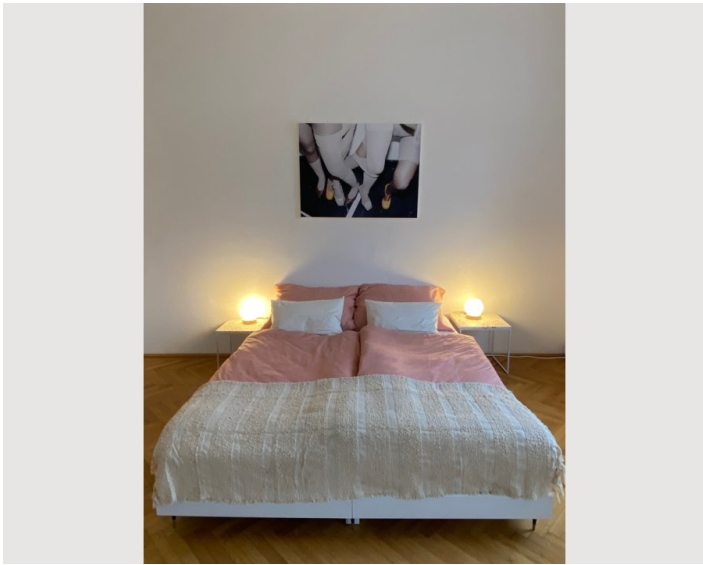
- Private kitchen
- Glasses/Tableware
- Dishwasher
- Cooking utensils
- Espresso machine

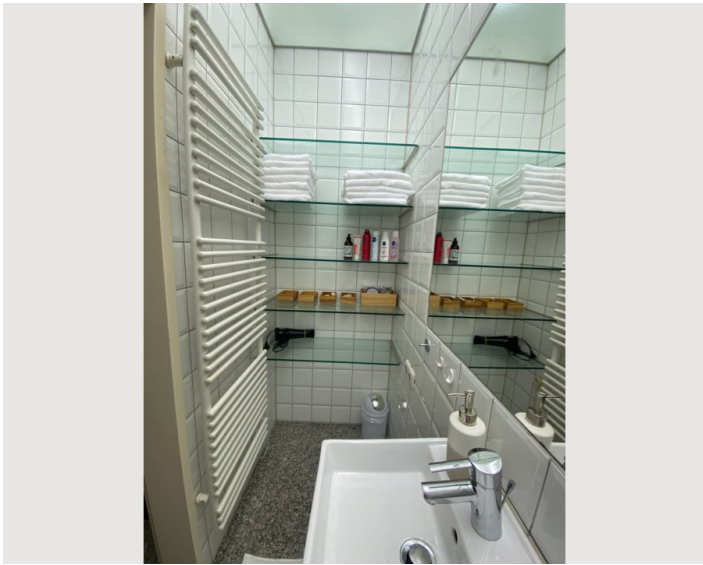
## Informations

- Suitable for children
- Short-term parking zone subject to a charge
- Pets forbidden
- Smoking not allowed
- Desk/Workplace

## Picture gallery







## Infrastructure



---

Perfect cycle path to the centre, all shops for daily needs within 5 minutes walking distance. Shopping centre within 15 minutes walking distance.  
25 minutes to Stephansplatz. 30 minutes to the countryside.

## Location

