



2 ZIMMER WOHNUNG, 1010 VIENNA

## Palais Bellegard - centrally located apartment

Object number: SCHE6

[View and rent online](#)

The apartment is newly renovated, comfortably furnished and is located directly next to the 1st district in a very central location in a listed historic palace.

<b>Period</b>	29/05/ - 29/06/2025
<b>Number of persons</b>	2
<b>Total incl. VAT.</b>	€ 1.968,40
<b>Security deposit</b>	€ 1.500,00



### Living space

38m<sup>2</sup>



### Maximum occupancy

2 Persons



### Complete accommodation <sup>?</sup>

1 private bathroom 1 Separated bedroom



### 2. floor



### Check-in

10:00 - 14:00 Clock



### Check-out

10:00 - 14:00 Clock

## Sleeping options

### Sleeping room



1x Double bed (1,60 m x 2 m)

## Descripton of accommodation

Both large windows are facing the inner courtyard and promise absolute tranquillity. The entire interior is new and combines modern furnishings with classic old buildings. The floors are high-quality and made of parquet or black stone. There are different designer furniture as well as 2 large works of art in the apartment. Additionally the ceiling was covered with stucco elements.

The apartment is well equipped and has all appliances needed in a household (dishwasher, oven, stove, fridge, freezer compartment, washing machine, Nespresso machine, hairdryer, TV, WIFI).

Due to the really optimal location and the harmonious equipment of the apartment, it is perfect for longer stays. If you quickly feel at home in a place in Vienna, then here.

## Equipment features



### Basic equipment

- Internet/Wifi
- Private washing machine
- TV
- Cleaning utensils



### First supply

- Toilet paper



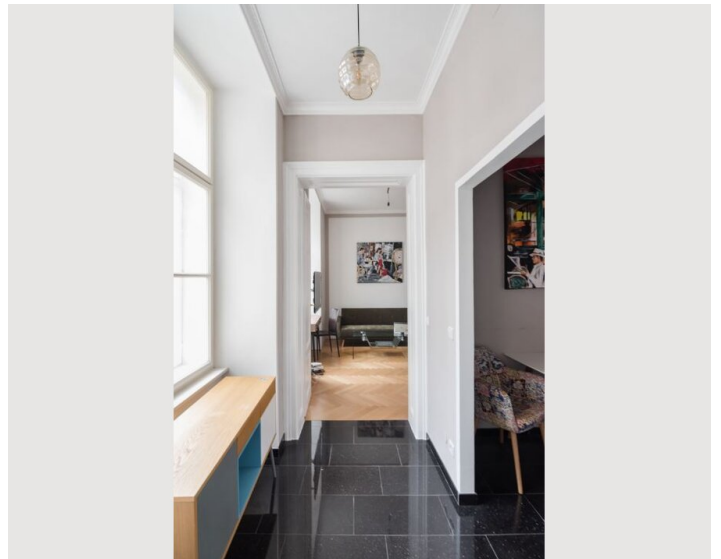
### Kitchen

- Private kitchen
- Glasses/Tableware
- Dishwasher
- Cooking utensils
- Espresso machine

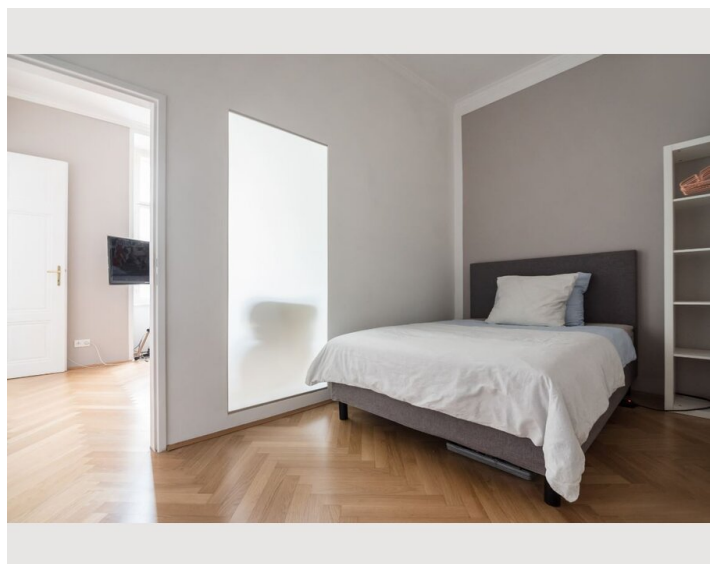
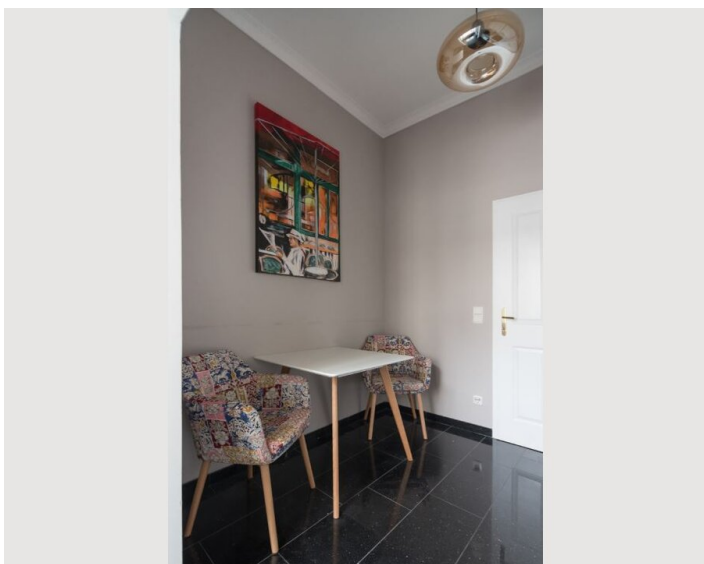
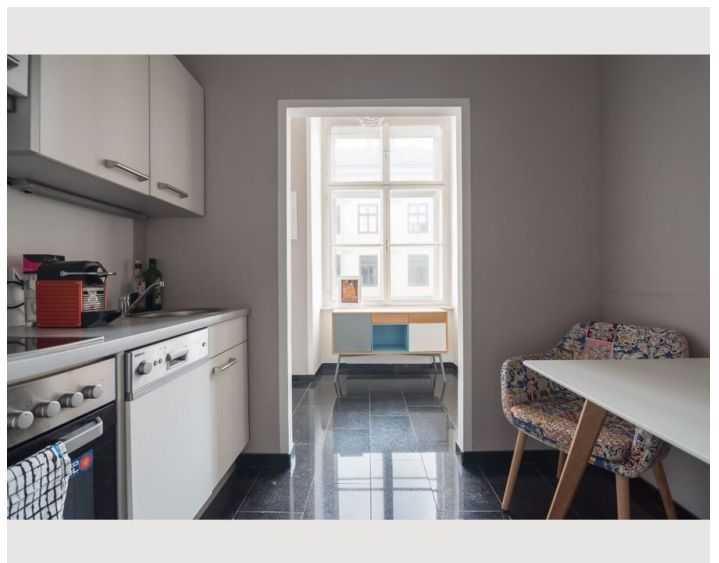
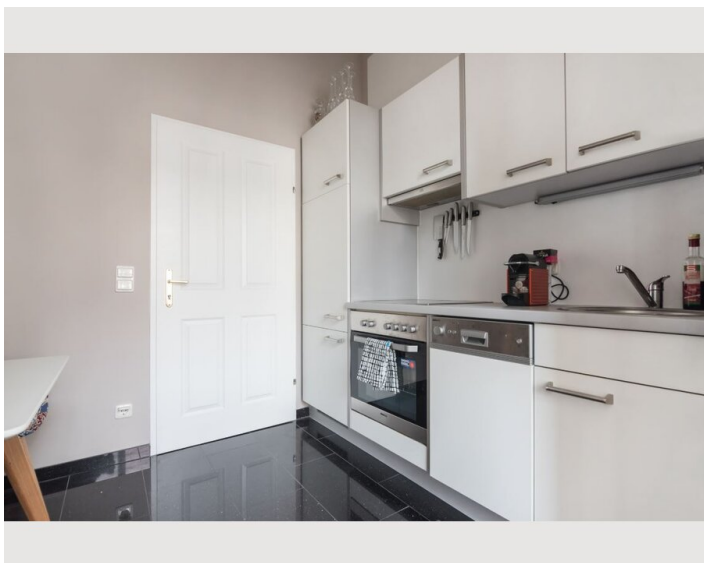
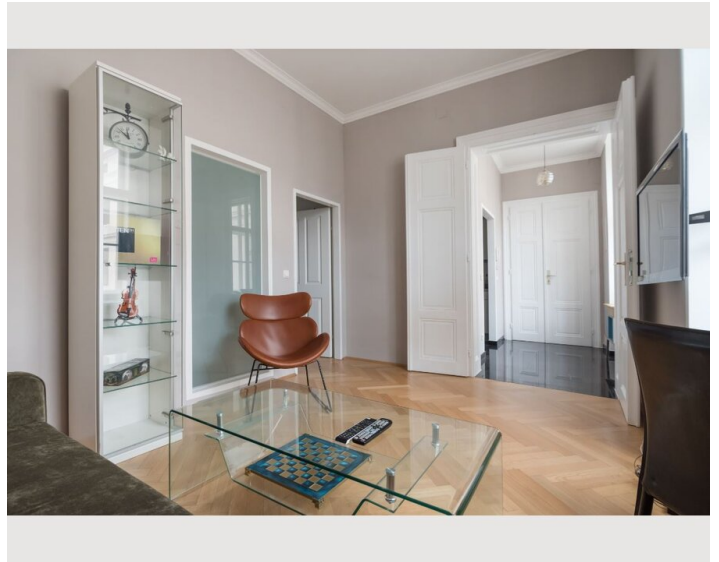
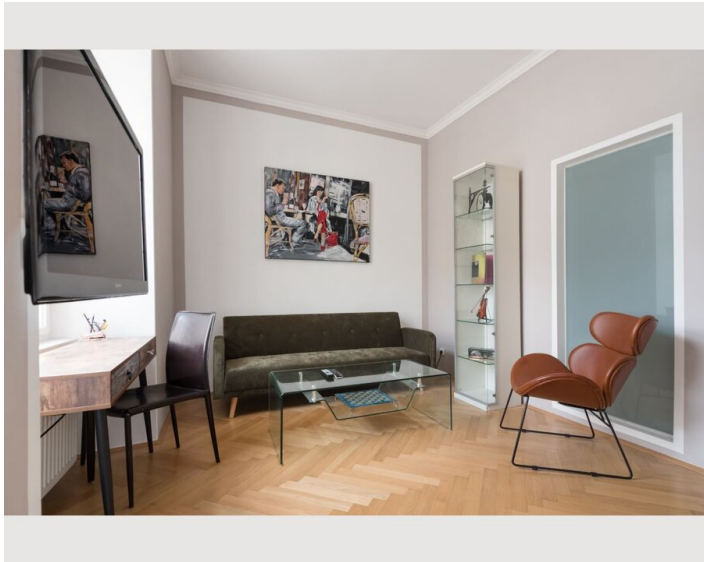
## Informations

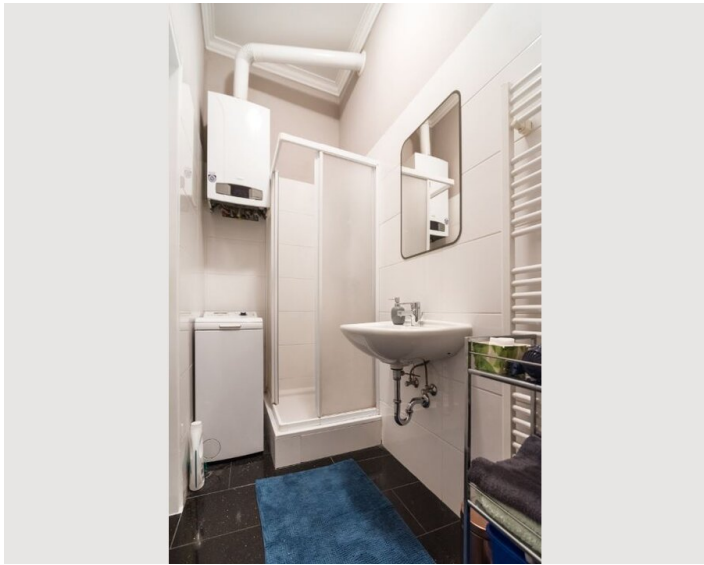
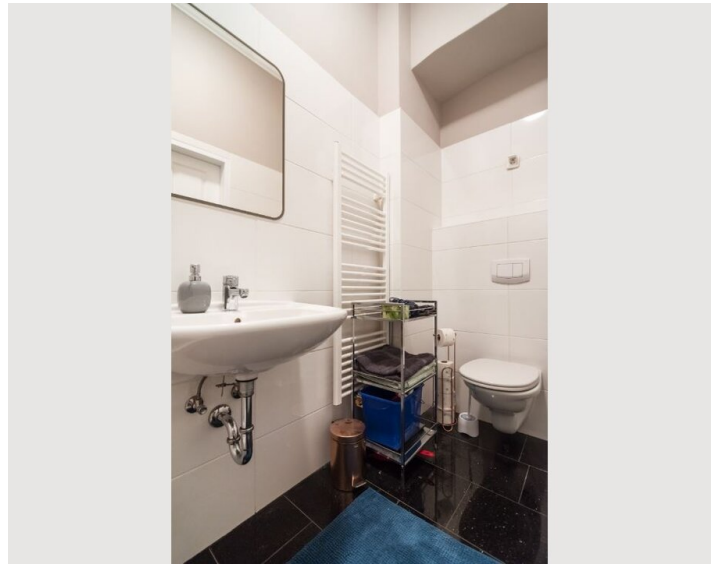
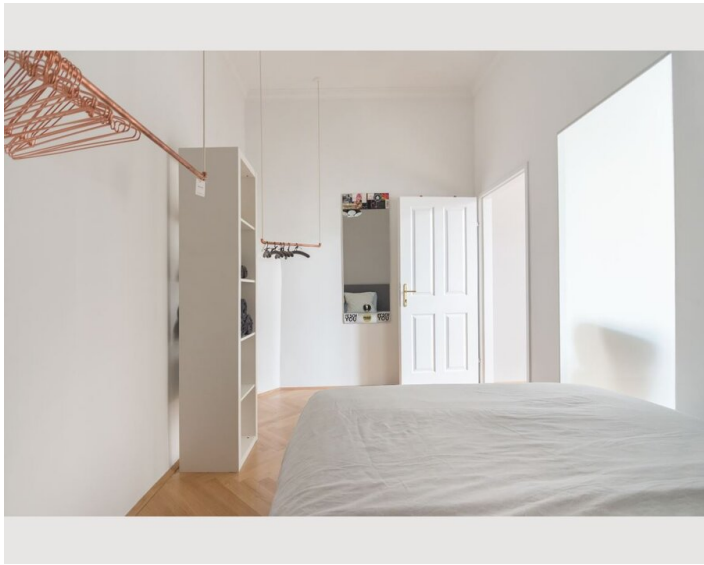
- Not suitable for children
- Desk/Workplace
- Pets forbidden
- Short-term parking zone subject to a charge
- Private entrance

## Picture gallery









## Location

