



2 ZIMMER WOHNUNG, 1100 VIENNA

Urban city apartment directly at the Wienerberg recreational area

Object number: LCW

[View and rent online](#)

The well-equipped modern apartment with a view over Vienna combines urban amenities and a direct access to the Wienerberg recreational area.

Period	24/06/ - 24/07/2025
Number of persons	2
Total incl. VAT.	€ 2.132,42
Security deposit	€ 1.700,00



Living space

75m²



Maximum occupancy

2 Persons



Complete accommodation [?]

1 private bathroom 1 Separated bedroom



21. floor

Elevator available



Check-in

10:00 - 20:00 Clock



Check-out

10:00 - 15:00 Clock

Sleeping options

Sleeping room



1x Double bed (1,80 m x 2 m)

Description of accommodation

The well-equipped, modern, non-smoking apartment offers plenty of comfort and quality of life.

A spacious living/dining area with a well-equipped kitchen and sumptuous sofa area, master bedroom, cabinet, bathroom with bathtub, WC with hand basin and checkroom extend over 74 m².

The apartment is located on the 21st floor and is equipped with all the amenities you need for living.

Free WiFi, washing machine, hairdryer, iron and ironing board, towels for every guest and comfortable bed sheets are available, as well as a soda maker and Nespresso coffee machine with milk frother. An optional garage parking space can be rented (please note: there is a short-stay parking zone in the entire Vienna area from Mon-Sat).

A concierge takes care of parcels and is available to answer any questions.

The 21st floor is a particularly cozy place to end the evening with a glass of wine and a good book, with a view over the sparkling city of Vienna.

For nature lovers or sports enthusiasts, the Wienerberg recreation area with its 14 km of hiking trails and running routes offers plenty of opportunities to balance out the stresses of everyday life. For even more sport, there are soccer, tennis and golf courses, a climbing hall and fitness studios in the immediate vicinity.

The Wienerberg-City with numerous stores for daily needs (Hofer, Billa, Billa Plus, Lidl, DM, Bipa, pharmacy, post office) is also home to many restaurants (pizzeria, Greek restaurant, brewery, Burger King, McDonalds,...) and a modern Cineplexx cinema (all within a 5-minute walk).

The apartment has good public transport connections: You will find the following connections within walking distance: Bus 15A, 7A, 65A, 16A, 7B,

The Meidling train station with all public transportation (subway, train, Badner Bahn, other bus connections) can be reached on foot in 15 minutes or by bus with line 7B, which stops right outside the front door, in 5 minutes.

Public transport will take you to the city center in about 30 minutes.

Equipment & Features



Basic equipment

- Internet/Wifi
- Private washing machine
- Towels
- Garage
- Iron & ironing board
- Hairdryer
- TV
- Bedclothes
- Private toilet
- Vacuum cleaner
- Cleaning utensils



First supply

- Toilet paper
- Soap
- Fridge filling on request
- shampoo
- Nespresso capsules



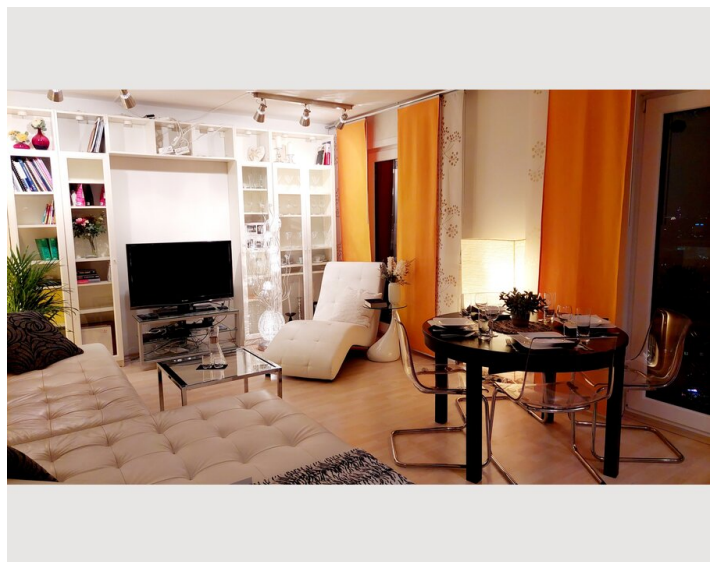
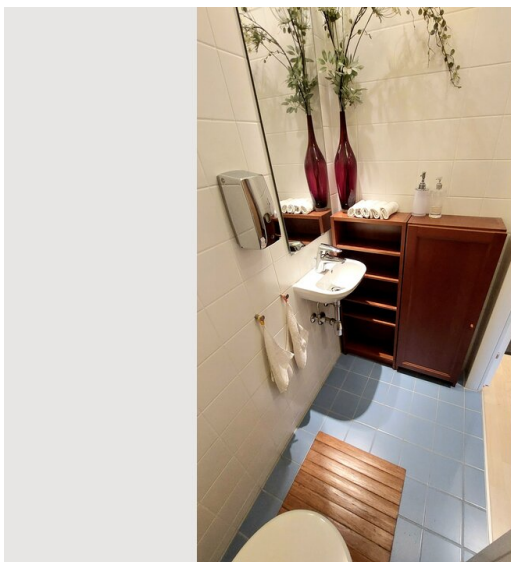
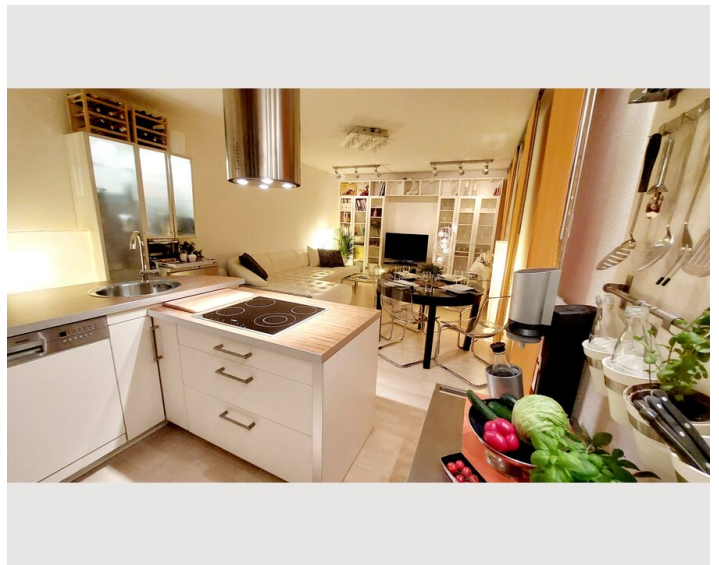
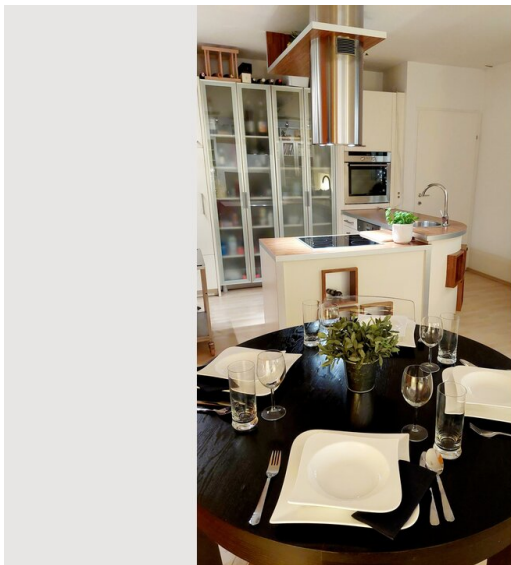
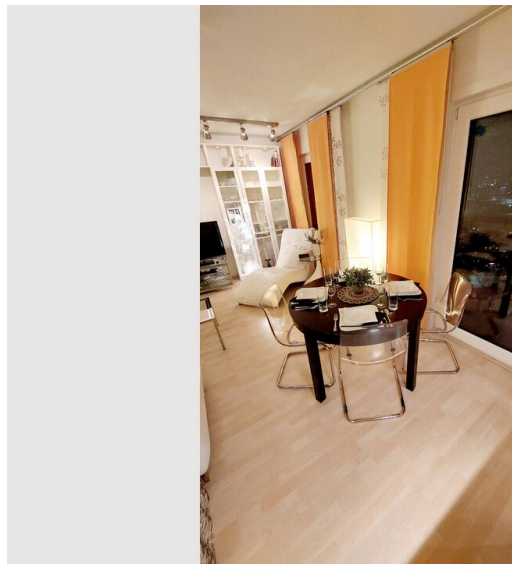
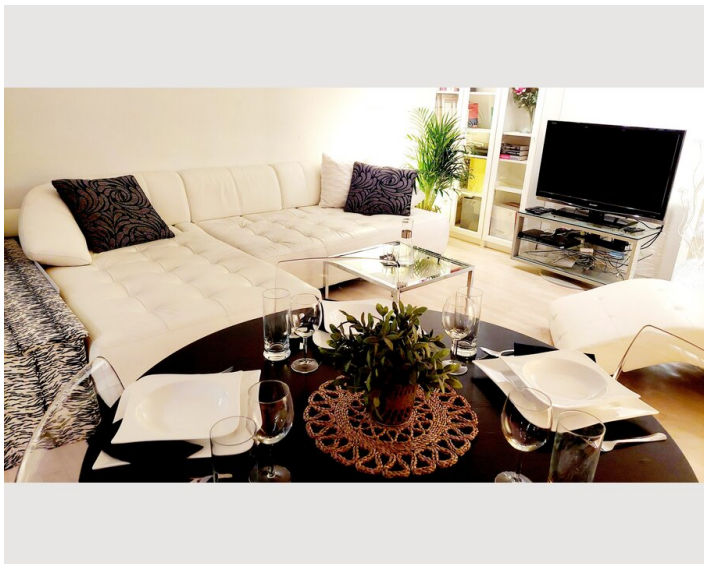
Kitchen

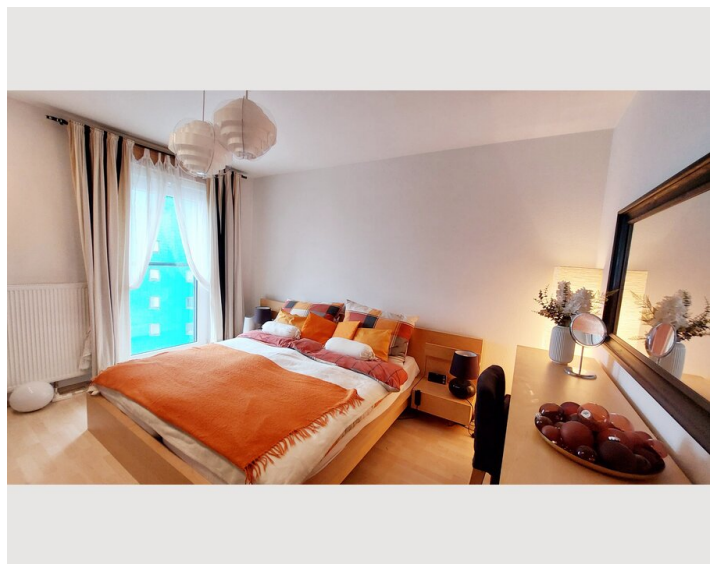
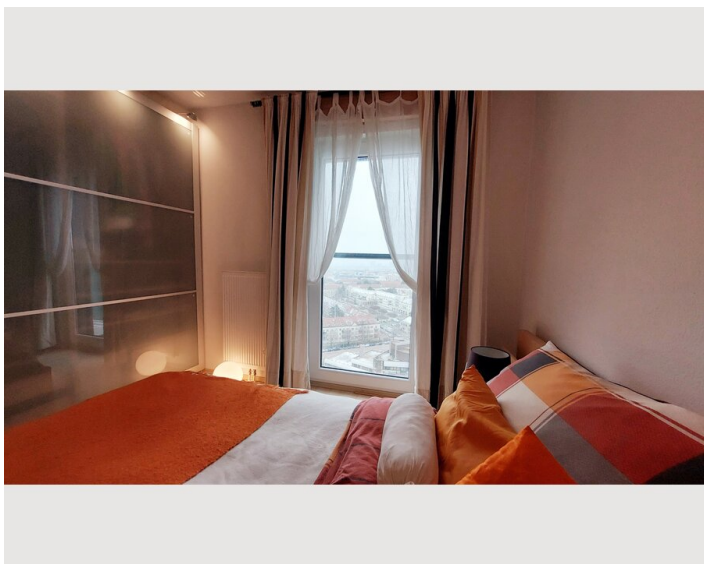
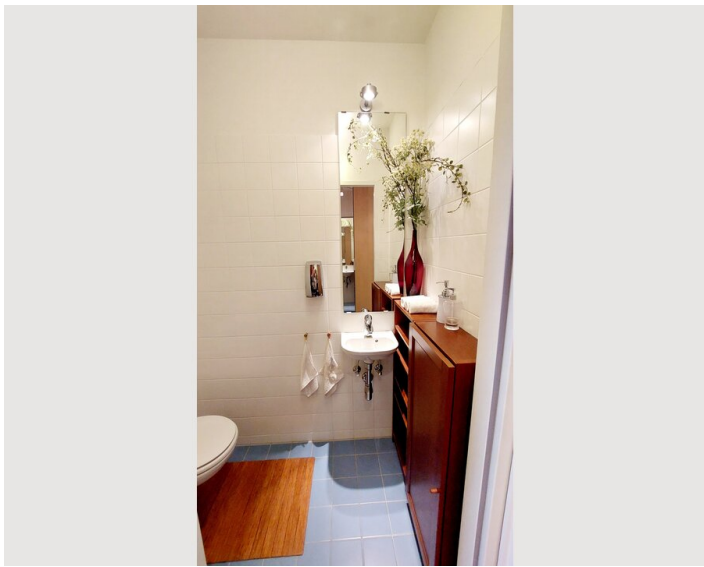
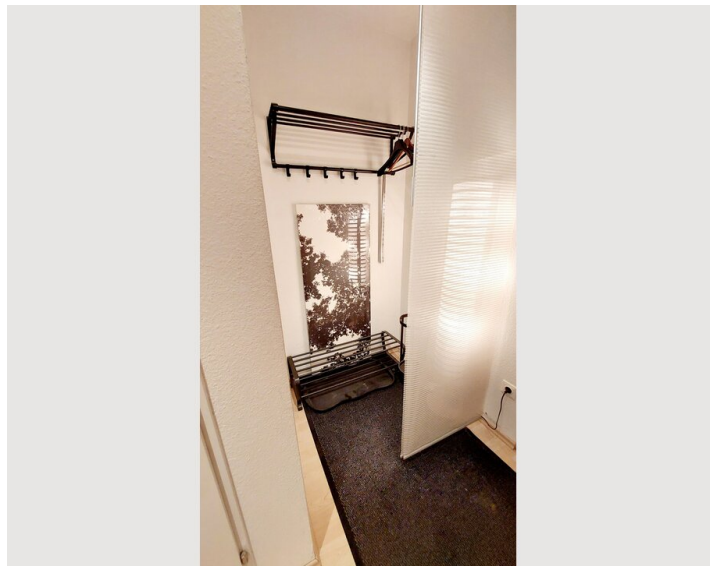
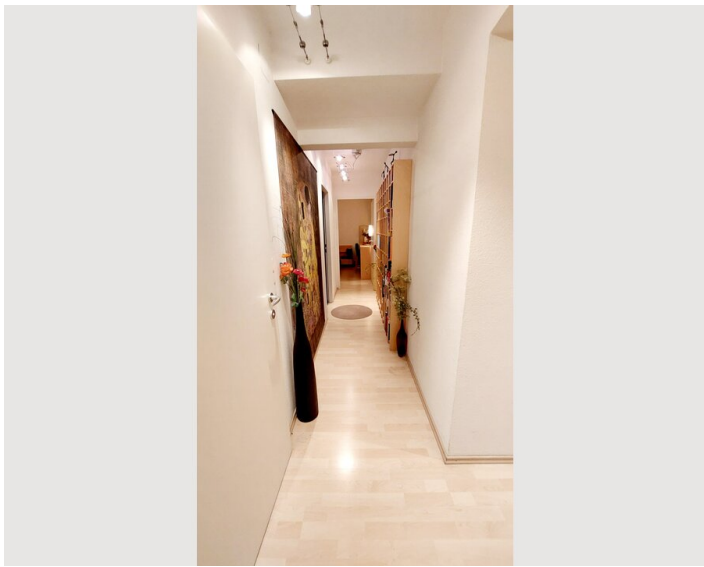
- Private kitchen
- Glasses/Tableware
- Dishwasher
- Cooking utensils
- Espresso machine

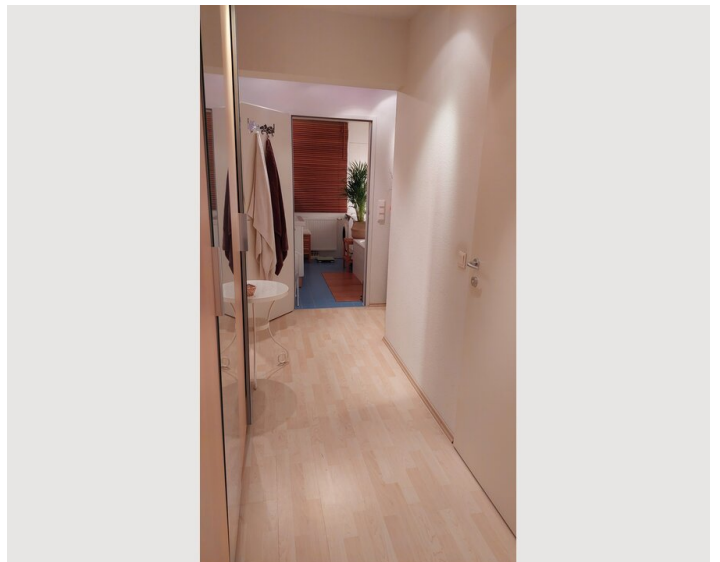
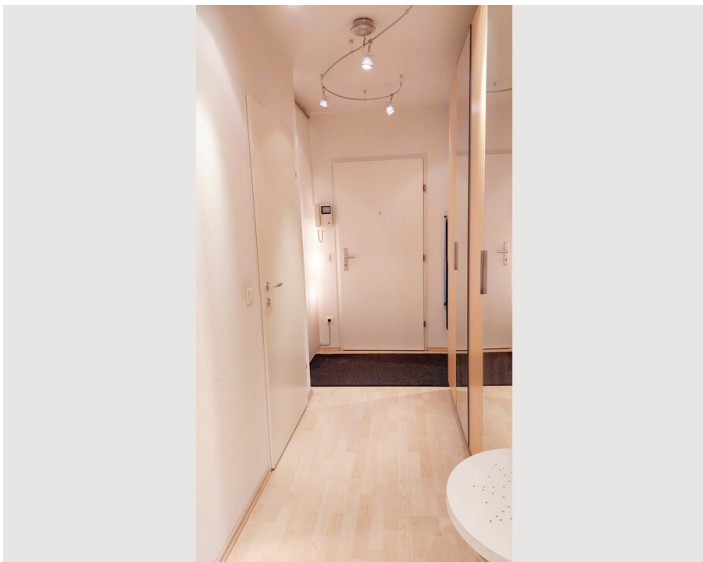
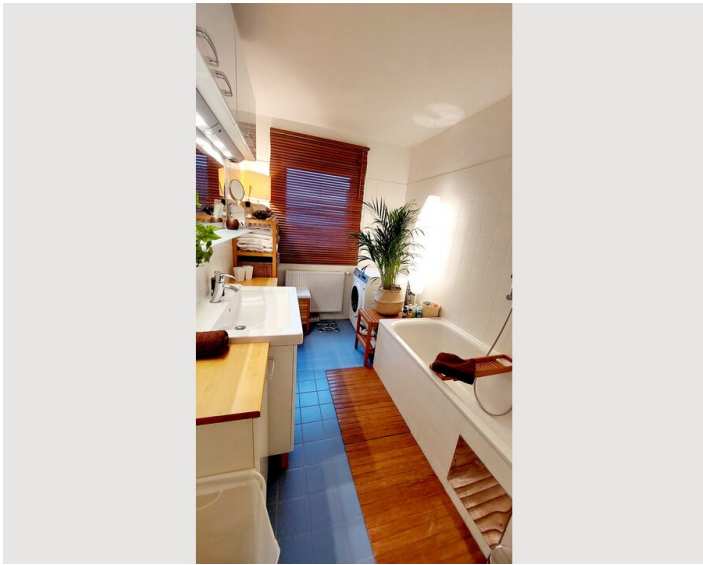
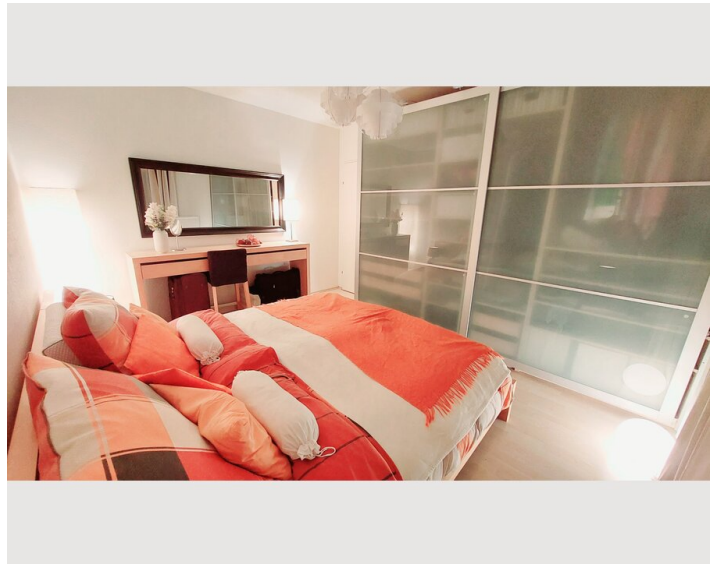
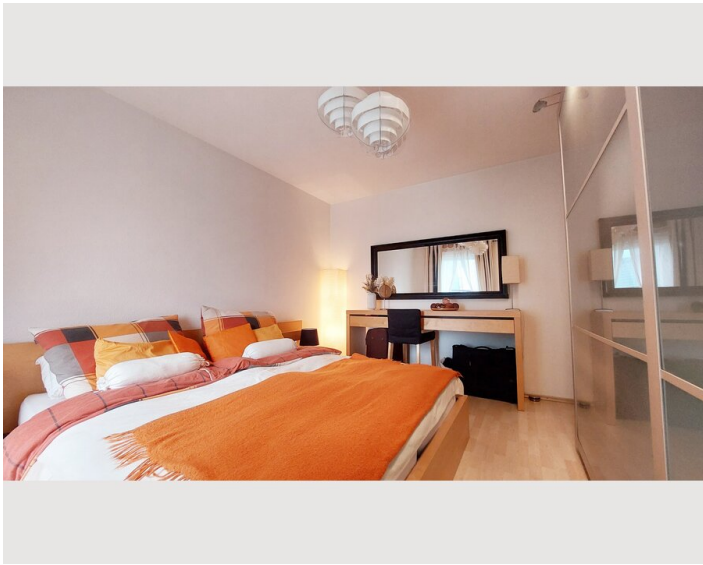
Informations

- Suitable for children
- Short-term parking zone subject to a charge
- Pets forbidden
- Smoking not allowed
- Desk/Workplace
- Bicycle room free of charge

Picture gallery









Infrastructure



5 minutes by bus



25 minutes by car, 50 minutes by public transport



right on your doorstep



all local amenities within a few minutes' walk



30 minutes by public transport to Stephansplatz

For nature lovers or sports enthusiasts, the Wienerberg recreation area with its 14 km of hiking trails and running routes offers plenty of opportunities to balance out the stresses of everyday life. For even more sport, there are soccer, tennis and golf courses, a climbing hall and fitness studios in the immediate vicinity.

The Wienerberg-City with numerous stores for daily needs (Hofer, Billa, Billa Plus, Lidl, DM, Bipa, pharmacy, post office) is also home to many restaurants (pizzeria, Greek restaurant, brewery, Burger King, McDonalds,...) and a modern Cineplexx cinema (all within a 5-minute walk).

The apartment has good public transport connections: You will find the following connections within walking distance: Bus 15A, 7A, 65A, 16A, 7B,

The Meidling train station with all public transportation (subway, train, Badner Bahn, other bus connections) can be reached on foot in 15 minutes or by bus with line 7B, which stops right outside the front door, in 5 minutes.

Public transport will take you to the city center in about 30 minutes.

Location

