



2 ZIMMER WOHNUNG, 71384 WEINSTADT

70 sqm apartment in Weinstadt Strümpfelbach

Object number: YHZH1

[View and rent online](#)

Period	18/06/ - 18/07/2025
Number of persons	2
Total incl. VAT.	€ 1.950,78
Security deposit	€ 1.500,00

The open-plan apartment has a large living/dining room with a sofa bed for 2 people. Separate bedroom. Sufficient cupboards.



Living space

70m²



Maximum occupancy

4 Persons



Complete accommodation [?]

1 private bathroom 1 Separated bedroom



Ground floor



Check-in

15:00 - 22:00 Clock



Check-out

00:00 - 11:00 Clock

Sleeping options

Sleeping room



1x Double bed (1,60 m x 2 m)

Descripton of accommodation

The open-plan apartment has a large living/dining room with a sofa bed for 2 people. There is a 55 inch satellite TV. The separate bedroom has a 1.6 m wide double bed and a flatscreen TV. The wardrobes offer plenty of space for clothes. The daylight bathroom is equipped with a shower, WC, washbasin and a washing machine. The dryer is located in a separate storage room. The fitted kitchen has a stove, oven, refrigerator and microwave. There is also a coffee machine, a toaster and a kettle.

The bus stop to Endersbach is a 3-minute walk away. There you will find an S-Bahn station to Stuttgart City and the airport without changing trains.

Translated with www.DeepL.com/Translator (free version)

Equipment features



Basic equipment

- Terrace
- Internet/Wifi
- Private washing machine
- Bedclothes
- Private toilet
- Vacuum cleaner
- Cleaning utensils
- Garden sharing
- TV
- Private dryer
- Towels
- Private parking space
- Iron & ironing board
- Hairdryer



First supply

- Toilet paper
- Soap
- shampoo



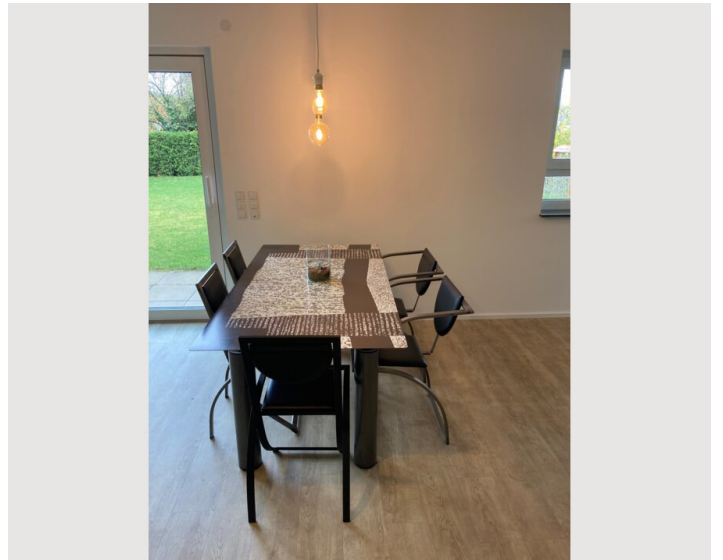
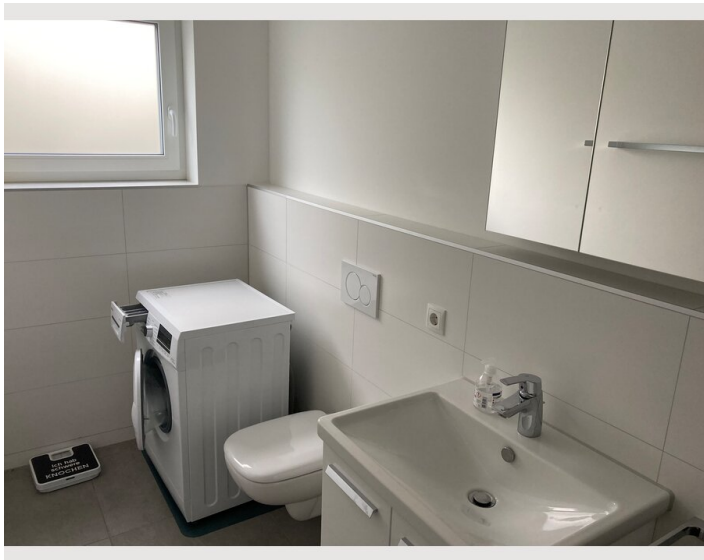
Kitchen

- Private kitchen
- Glasses/Tableware
- Dishwasher
- Cooking utensils
- Filter coffee
- Microwave

Informations


- Suitable for construction workers
- Smoking not allowed
- Private entrance
- Regular cleaning at extra cost
- Suitable for children
- Desk/Workplace
- Pets on request


Picture gallery






Infrastructure

 3 min by foot

 20 Min by car 40 min by train

 8 min by Bus

 10 minutes walk

There is a bakery with a small supermarket, Italian, Greek and several Swabian restaurants. There are also wine taverns that are open seasonally.

Location

