



HOUSE, 5310 MONDSEE

Holiday Home/ House in Mondsee/ Salzkammergut

Object number: LDDA1

[View and rent online](#)

We rent our holiday home at Mondsee in the beautiful Salzkammergut near Salzburg. Perfect for up to 4 people with a beautiful, fenced and impregnable garden. 2 Bedrooms Open living space With luxury Miele kitchen Large double carport

Period	05/04/ - 05/05/2026
Number of persons	2
Total incl. VAT.	€ 4.048,28
Security deposit	€ 3.000,00



Living space

98m²



Maximum occupancy

4 Persons



Complete accommodation [?]

1 Private bathroom 2 Separated bedrooms



1. floor



Check-in

15:00 - 20:00 Clock



Check-out

08:00 - 10:00 Clock

Sleeping options

Bedroom 1



1x Double bed (1,80 m x 2 m)



1x Children/baby bed

Bedroom 2



1x Double bed (1,40 m x 2 m)

Descripton of accommodation

A dream in summer and winter.

Let yourself be enchanted by the Salzkammergut.

Max 4 people and one baby

2 Bedrooms

Unfortunately no animals allowed

2 double carport spaces and a covered/lockable bike port

Fenced and secluded garden

Optionally, 2 beach cruisers can be rented

Winter: Tobogganing, winter hiking, skiing (Oberraschau, Thalgauberg, Postalm), ski courses on request, cross-country skiing, ski tours

Summer: hiking, climbing, swimming (5 min walk to the swimming area), sailing, surfing, alpine seaside resort, mountain biking, racing bike, golfing (several golf courses), water skiing, weakboarding, hiking

For children: fairytale forest, fairytale trail, Alpine lakeside resort of Mondsee, Fuschlseebad, lakeside resort of Unterrach, mermaid trail at the waterfall, summer tobogganing, farms within walking distance (petting and feeding animals), horseback riding (equestrian center), mini golf, Gut Aidbichl

Lakes in the immediate vicinity: Mondsee, Attersee, Irrsee, Fuschlsee, Traunsee, Wolfgangsee

Cities/Villages:

- Mondsee 3 min (car) also within walking distance

- Salzburg 20 min

- Bad Ischl (Imperial City) 25 min

- Gmunden

- Saint Wolfgang

Mountains and alpine pastures (many within walking distance): Schafberg, Schober, Traunstein, Drachenwand, Almkogel, Kulmispitz (with high observation tower)

Equipment & Features

Basic equipment

- Terrace
 - Internet/Wifi
 - Bedclothes
 - Private toilet
 - Vacuum cleaner
 - Garden
 - TV
 - Towels
 - Garage
 - Hairdryer
-

First supply

- Toilet paper
 - Nespresso capsules
 - Soap
-

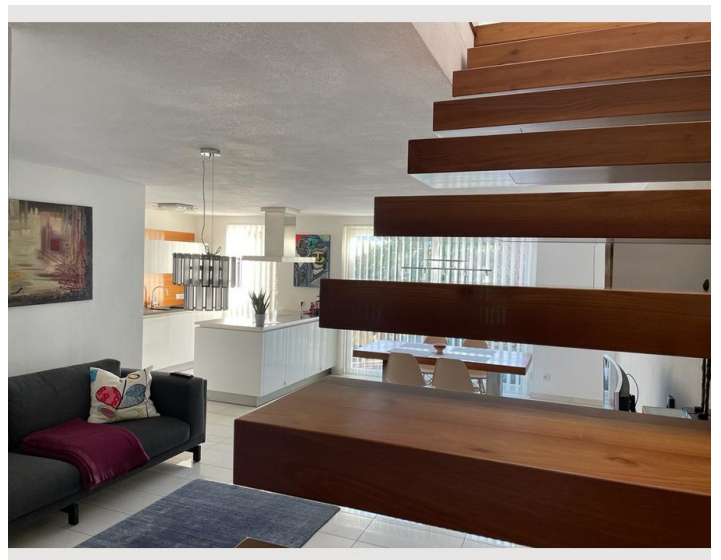
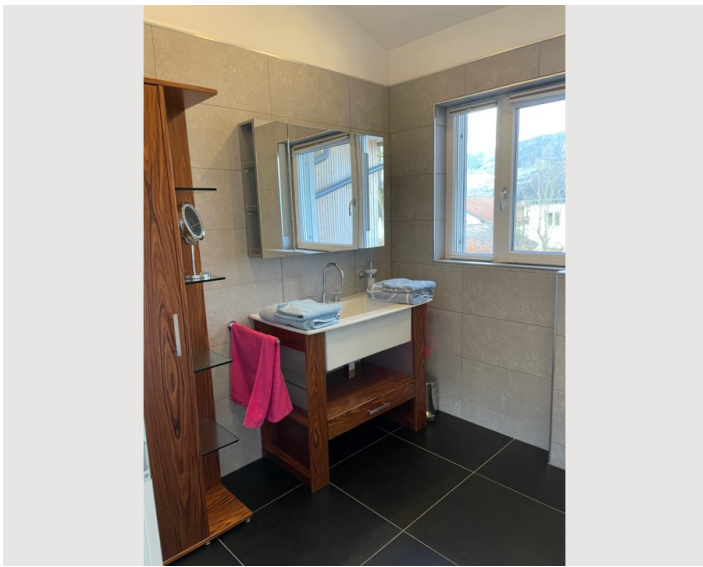
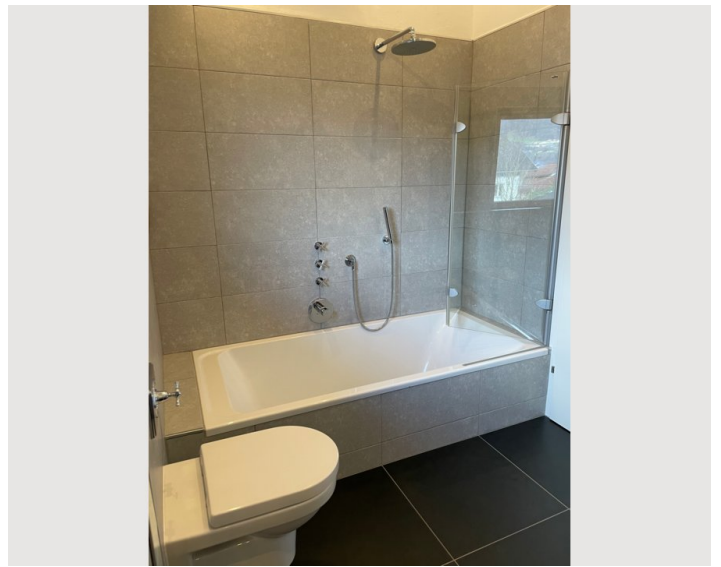
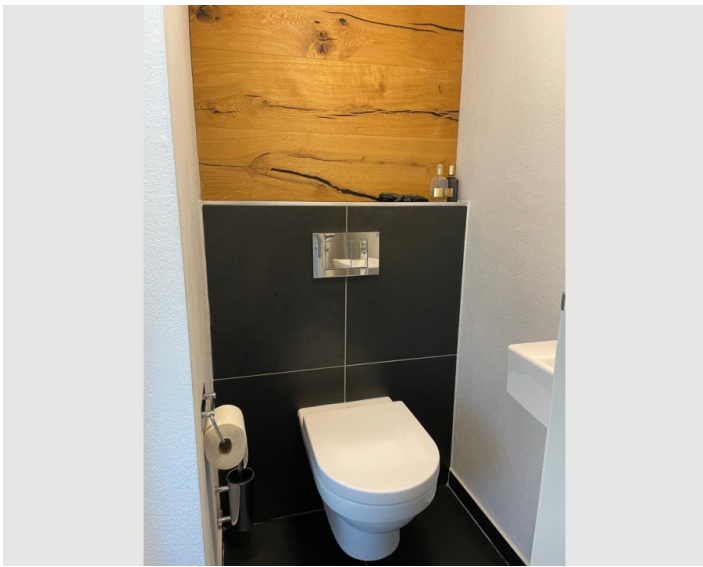
Kitchen

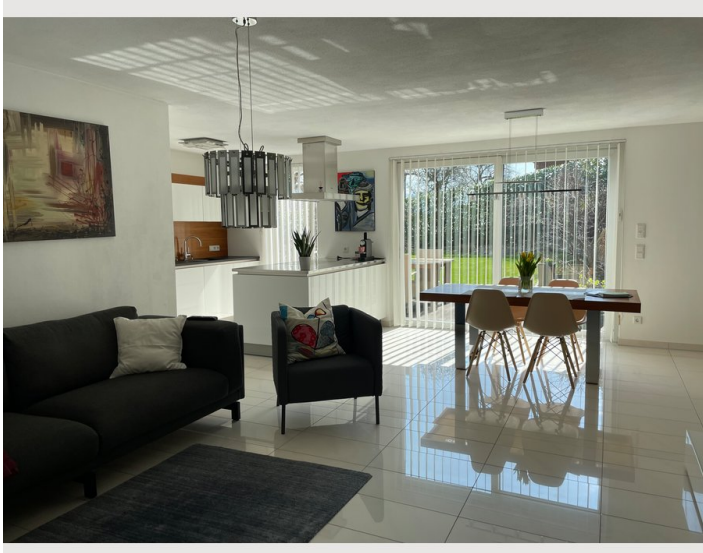
- Private kitchen
- Glasses/Tableware
- Dishwasher
- Cooking utensils
- Espresso machine
- Steam cooker

Informations

- Desk/Workplace
- Pets forbidden
- Private entrance


Picture gallery







Infrastructure

 Mondsee Busstation

It's a 5-minute walk to the lake and public swimming area.
5 Minutes from the Highway.
Alpine resort can be reached in 5 minutes by car.
SPAR market, Hofer within walking distance.
In Mondsee, doctors, pharmacies, supermarkets, gas stations, etc.

Location

