



4 ROOM APARTMENT AND MORE, 3611 HABRUCK

## Short-term living in the Wacha - TOP C-D

Object number: QVCF1

[View and rent online](#)

<b>Period</b>	12/07/ - 12/08/2025
<b>Number of persons</b>	2
<b>Total</b> incl. VAT.	€ 3.938,40
Security deposit	€ 2.900,00

This large apartment, divided into 2 self-sufficient units by the stairwell, is suitable for up to 13 company employees with a total of 145 square meters of living space..It can be rented as a secondary professional residence for between 1 & 6 month.



### Living space

145m²



### Maximum occupancy

11 Persons



### Complete accommodation <sup>?</sup>

2 private bathrooms 5 Separated bedrooms 1 Living-Sleepingroom



### 1. floor



### Check-in

16:00 - 23:00 Clock



### Check-out

05:00 - 11:00 Clock

## Sleeping options

### Bedroom 1



2x Single bed

### Bedroom 2



1x Single bed

### Bedroom 3



2x Single bed

#### Bedroom 4



2x Single bed



1x Sofa bed (1 person)

#### Bedroom 5



1x Single bed

#### Living and sleeping



1x Sofa bed (1 person)

## Descripton of accommodation

This fitter's apartment with 2 self-sufficient residential units, separated by the stairwell, on the 1st floor. has 7 rooms, 11 single beds and 2 sofa beds, 2 kitchens with dishwashers, 2 bathrooms (walk-in shower), 2 toilets, 1 balcony, 1 washing machine and at least 3 parking spaces. Each apartment is 145 square meters.

Habruck is located in the southern Waldviertel on the edge of the Wachau at an altitude of 700 meters.

Here are some top destinations nearby and their distances from your apartment: - Weißenkirchen an der Donau: 10 km (11 min.) - Dürnstein an der Donau: 17 km (14 min.) - Spitz an der Donau: 7 km (14 Min.) - Ottenschlag / Waldviertel: 14 km (16 min.) - Krems an der Donau: 23 km (20 min.) - Melk an der Donau Abbey: 25 km (25 min.) - Mariataferl pilgrimage site: 34 km (42 Min.) - State capital St. Pölten: 45 km (50 min.) - Vienna center: 104 km (78 min.).

### Equipment & Features



#### Basic equipment

- Balcony
- Garden sharing
- TV
- Bedclothes
- Private toilet
- Vacuum cleaner
- Terrace
- Internet/Wifi
- Private washing machine
- Towels
- Private parking space
- Hairdryer



#### First supply

- Toilet paper
- Soap
- shampoo



#### Kitchen

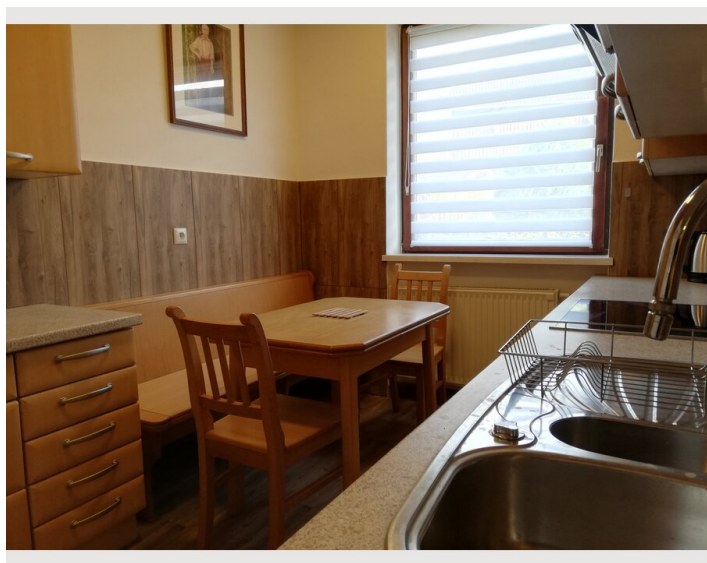
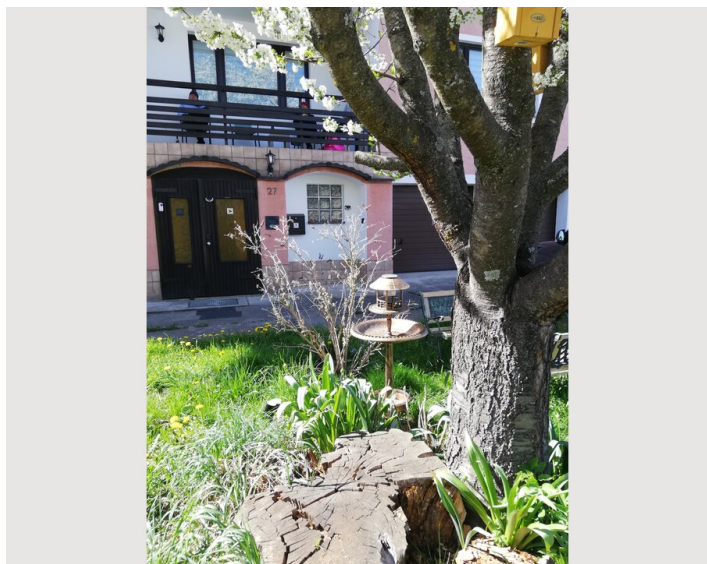
- Private kitchen
- Glasses/Tableware
- Dishwasher
- Cooking utensils
- Filter coffee
- Microwave

### Informations

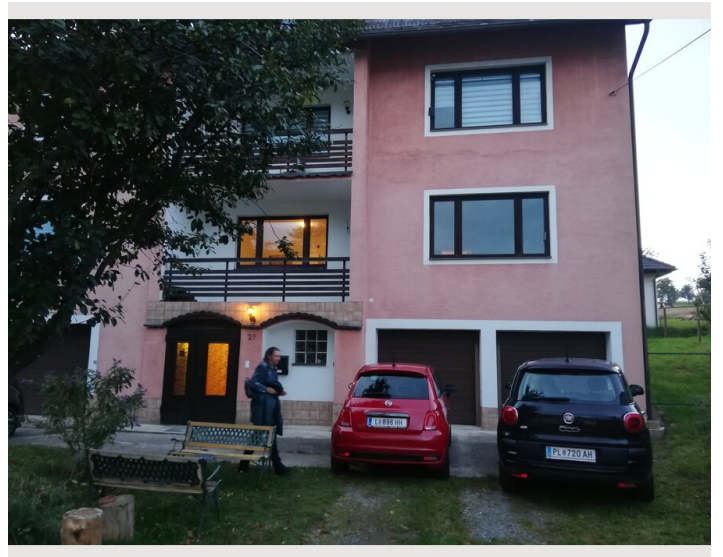
- Suitable for construction workers
- Smoking not allowed
- Private entrance
- Regular cleaning at extra cost
- Suitable for children
- Desk/Workplace
- Pets forbidden
- Bicycle room free of charge



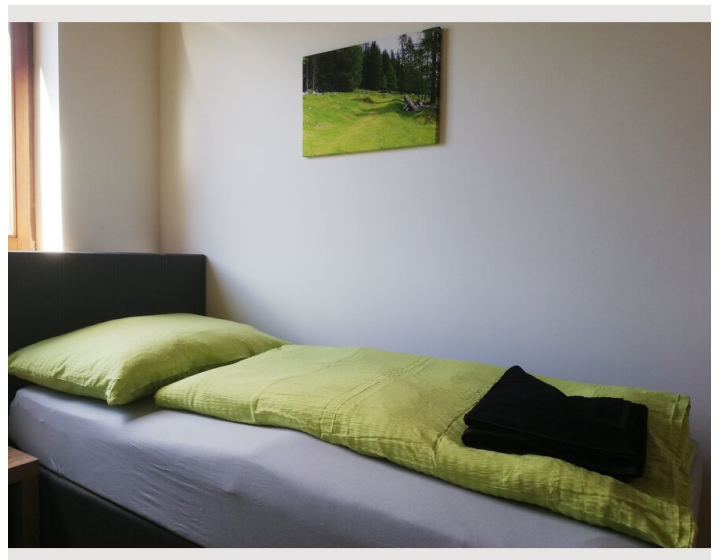
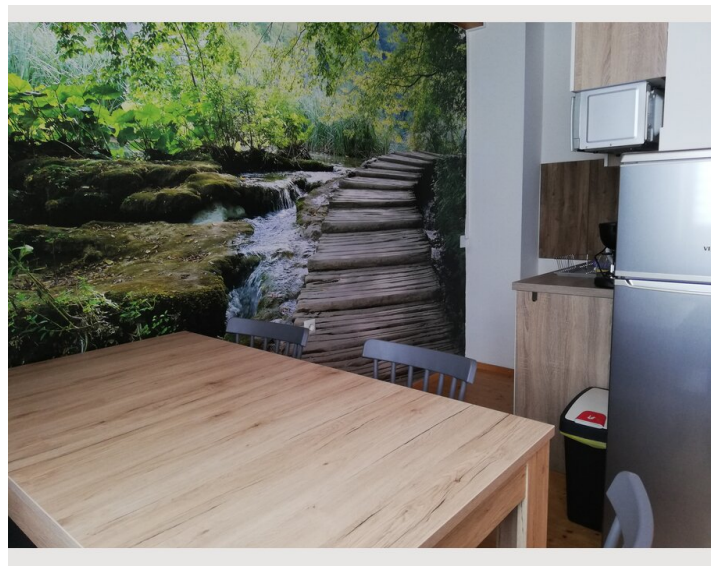
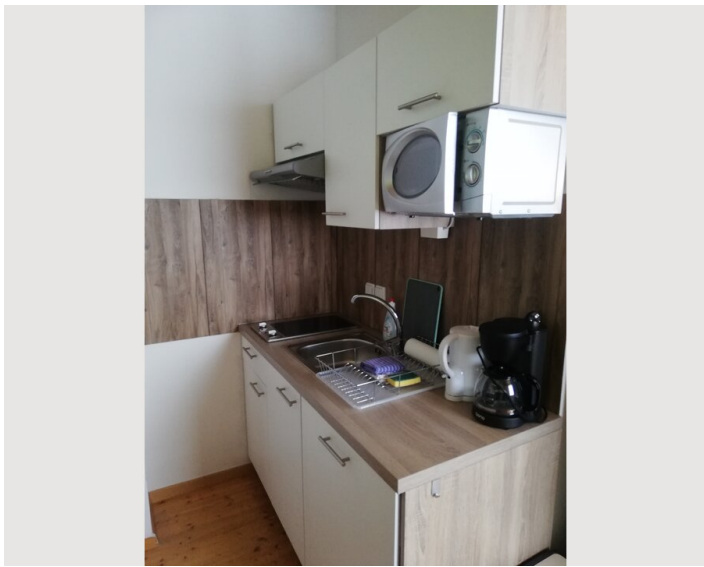
## Picture gallery

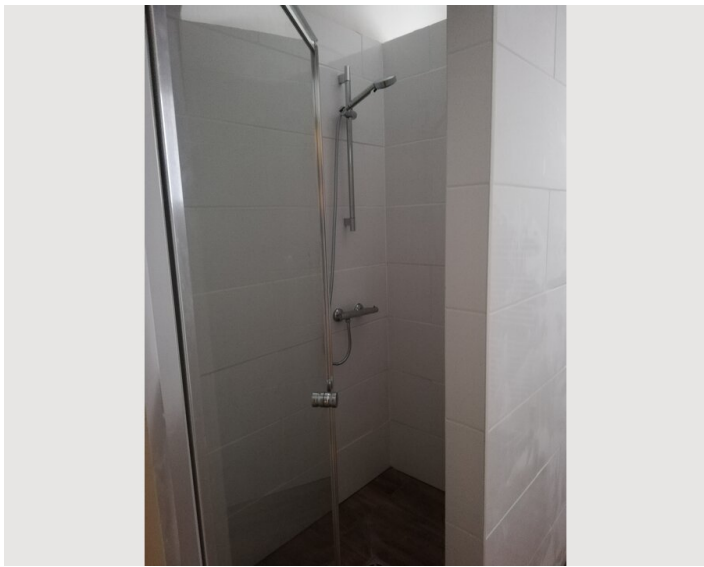














### Infrastructure

 3 minutes from the property

 10-15 minutes from the property

---

The property is located in absolute peace and quiet in a small, dreamy village in the southern Waldviertel, which borders the Wachau. Extensive hiking trails right outside the front door invite you to take walks in the fresh air. Thanks to the very quiet location, the fitters can relax wonderfully at night. A bus stop just a 5-minute walk takes you every hour to Krems an der Donau or to Spitz, Melk etc. By car you can reach the Danube within 15 minutes. A food market with a post office, bakery and cafe can be found in the neighboring town of Großheinrichschlag, about 10 minutes away. A very good inn with local specialties at very reasonable prices, beers and wines from the region with a bowling alley and disco can be found in the neighboring town of Himberg, which you can easily reach on foot due to the short distance.



## Location

