



STUDIO APARTMENT, 3144 WALD

## Short-term living at SCHLOSS WALD / St. Pölten-Land / Apartment DAVINCI

Object number: VERI2

[View and rent online](#)

Enjoy the peace and spaciousness of your holiday home in the midst of exuberant nature in Elsbeerland near the cities of St. Pölten and Vienna. The studio is located in the former noble mansion of the Auersperg dynasty at Wald Castle.

<b>Period</b>	26/05/ - 26/06/2026
<b>Number of persons</b>	2
<b>Total incl. VAT.</b>	€ 1.790,78
Security deposit	€ 1.300,00



### Living space

20m<sup>2</sup>



### Maximum occupancy

2 Persons



### Complete accommodation <sup>?</sup>

1 Private bathroom 1 Living-Sleepingroom



### Ground floor



### Check-in

16:00 - 22:00 Clock



### Check-out

05:00 - 11:00 Clock

## Sleeping options

### Living & Sleeping



2x Single bed

## Descripton of accommodation

We offer a luxurious company apartment with 2 box spring single beds, kitchenette, private bathroom/ Shower/toilet, workplace, TV, internet and free parking space.

Separated from the main house in its own area on the ground floor and with its own access via a secluded, sunny courtyard, you can relax wonderfully.

The studio is therefore recommended all year round for summer visitors, winter sports enthusiasts, hikers, those seeking relaxation and business travelers.

In the photos you can see the two single beds (box spring beds) pushed together to form a large king-size bed (180 x 200 cm). However, these can easily be pushed apart to form two single beds (each measuring 90 x 200 cm) with enough space between each other so that two company employees can sleep comfortably here.

## Equipment & Features



### Basic equipment

- Terrace
- Garden sharing
- TV
- Towels
- Parking on the road without time limit without any cost
- Cleaning utensils
- Garden
- Internet/Wifi
- Bedclothes
- Private toilet
- Vacuum cleaner
- Hairdryer



### First supply

- Toilet paper
- shampoo



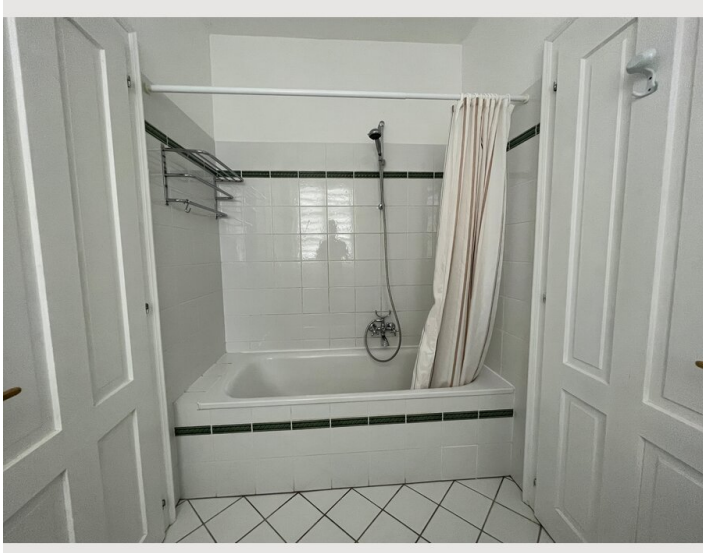
### Kitchen

- Kitchenette
- Glasses/Tableware
- Microwave
- Cooking utensils
- Filter coffee

## Informations

- Suitable for construction workers
- Smoking not allowed
- Private entrance
- Regular cleaning at extra cost
- Not suitable for children
- Desk/Workplace
- Pets forbidden

## Picture gallery






### Infrastructure

 1 minute from the apartment

 10 minutes from the property

 10 minutes from the property

 about 60 minutes away

A bus runs every 30 minutes to the main train station in the state capital St. Pölten. The bus stop is right next to the apartment. You can reach St. Pölten in a maximum of 15 minutes by car.

Gas station, grocery stores, various inns are within 10 minutes of the property.

Pyhra also has one of the most beautiful natural swimming pools with a bistro.

Vienna-Schwechat International Airport is around 60 minutes and approx. 90 km away.

## Location

