



2 ZIMMER WOHNUNG, 3144 WALD

Short-term living at SCHLOSS WALD / St. Pölten-Land / 2-room apartment RAPHAEL

Object number: VERY3

[View and rent online](#)

Enjoy the peace and spaciousness of your holiday home in the midst of exuberant nature in Elsbeerland near the cities of St. Pölten and Vienna. The 2-room apartment is located in the former mansion of the Auersperg dynasty at Wald Castle.

Period	21/07/ - 21/08/2025
Number of persons	2
Total incl. VAT.	€ 2.337,56
Security deposit	€ 1.700,00



Living space

35m²



Maximum occupancy

3 Persons



Complete accommodation [?]

1 private bathroom 1 Separated bedroom 1 Living-Sleepingroom



Ground floor



Check-in

16:00 - 22:00 Clock



Check-out

05:00 - 11:00 Clock

Sleeping options

Sleeping room



2x Single bed

Living and sleeping



1x Sofa bed (1 person)

Descripton of accommodation

In our two-room apartment RAPHAEL at Schloss Wald, south of the state capital St. Pölten (15 minutes), Vienna (45 minutes) and Krems / Wachau (25 minutes), we offer a luxurious company apartment with 2 box spring single beds, kitchenette, private bathroom/shower /WC, workplace, TV, internet and free parking space.

Separated from the main house in its own area on the ground floor and with its own access via a secluded, sunny courtyard, you can relax wonderfully.

The apartment is therefore recommended all year round for summer visitors, winter sports enthusiasts, hikers, those seeking relaxation and business travelers.

In the photos you can see the two single beds (box spring beds) pushed together to form a large king-size bed (180 x 200 cm) and pushed apart to form two single beds (each 90 x 200 cm) with enough distance between them so that they are comfortable and comfortable 2 company employees can stay overnight.

In the living room/bedroom you will find a huge living area with a high-quality bed function (1.40 x 200 cm).

Equipment & Features



Basic equipment

- Terrace
- Garden sharing
- TV
- Towels
- On the road without time limit without any cost
- Cleaning utensils
- Garden
- Internet/Wifi
- Bedclothes
- Private toilet
- Vacuum cleaner
- Hairdryer



First supply

- Toilet paper
- shampoo



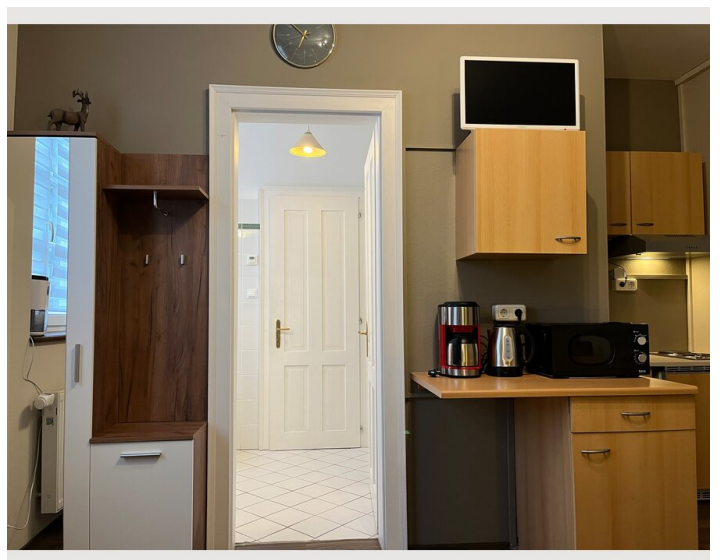
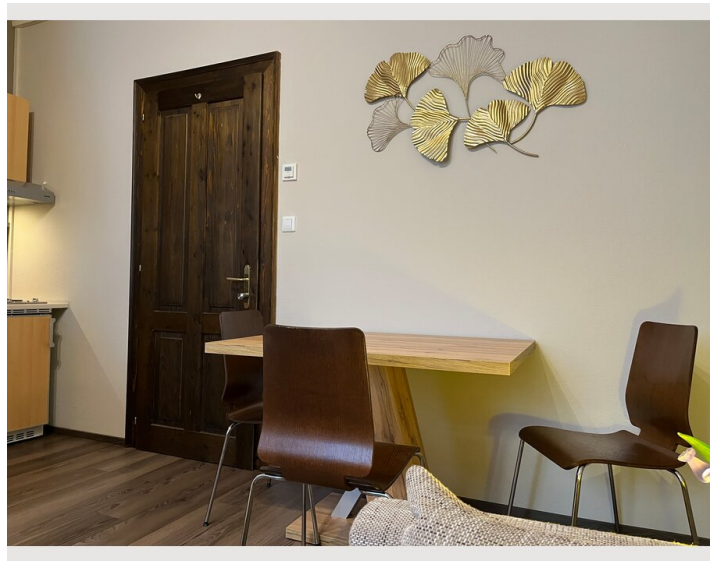
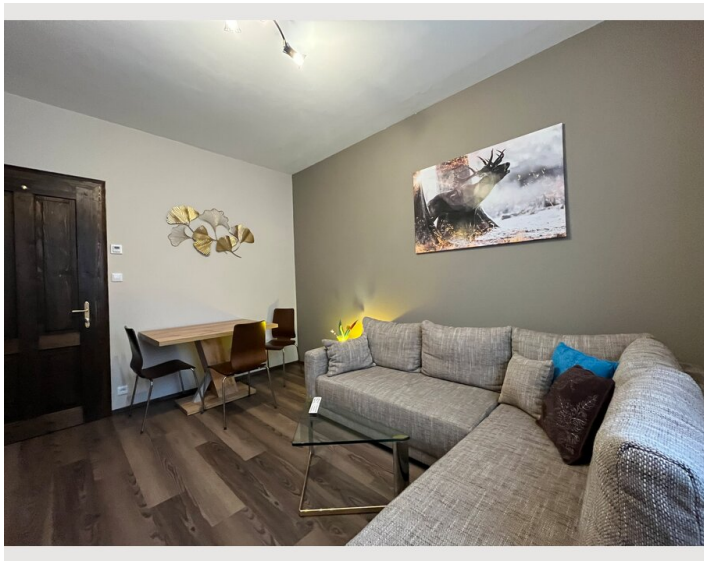
Kitchen

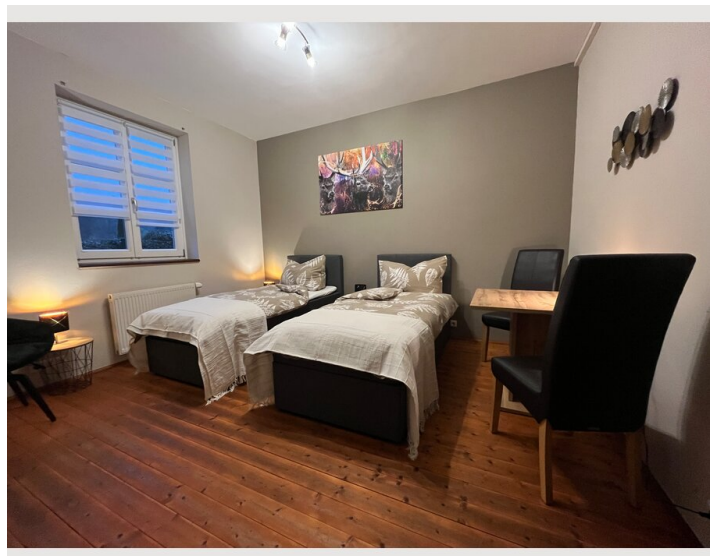
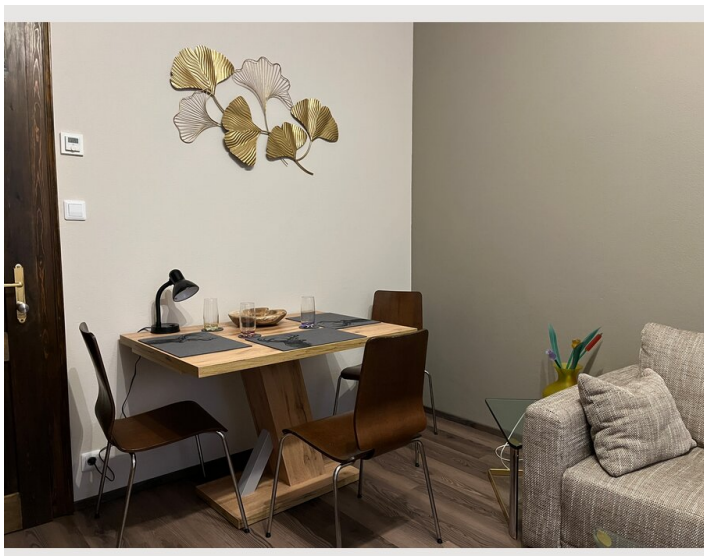
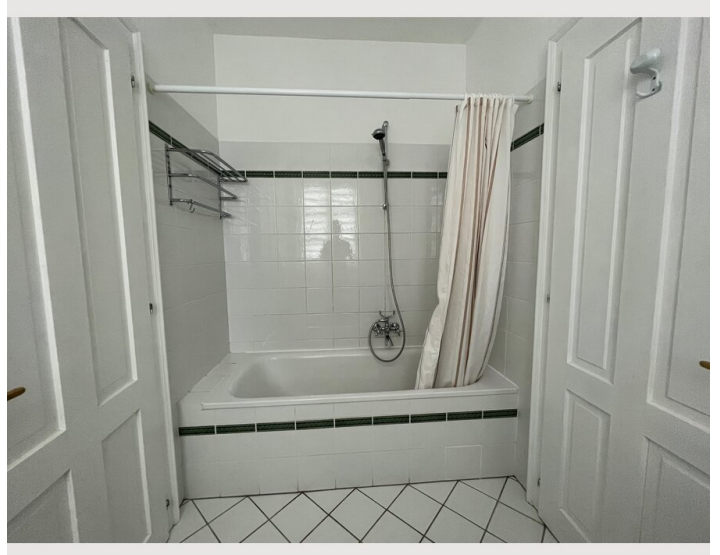
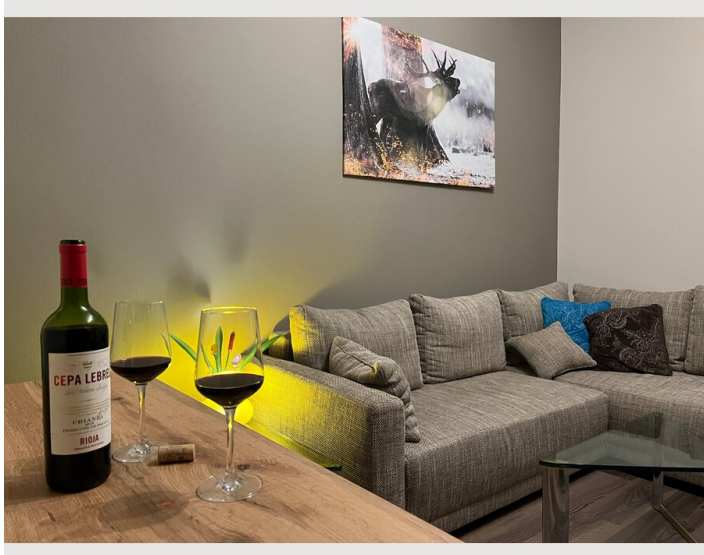
- Kitchenette
- Filter coffee
- Glasses/Tableware
- Microwave

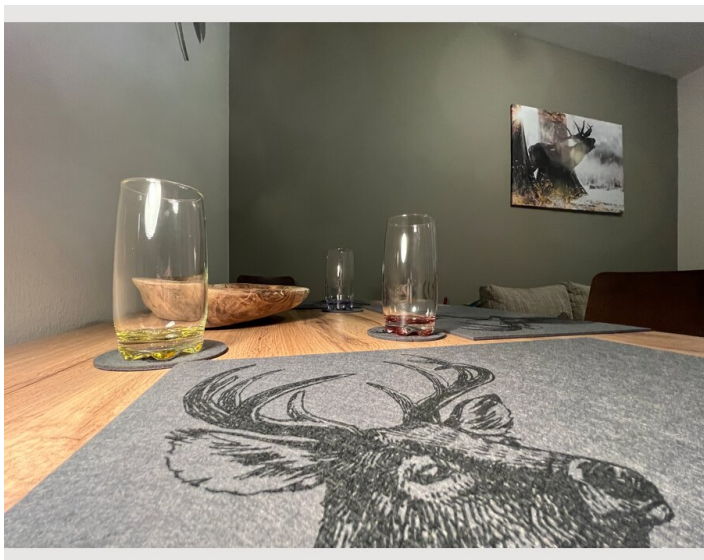
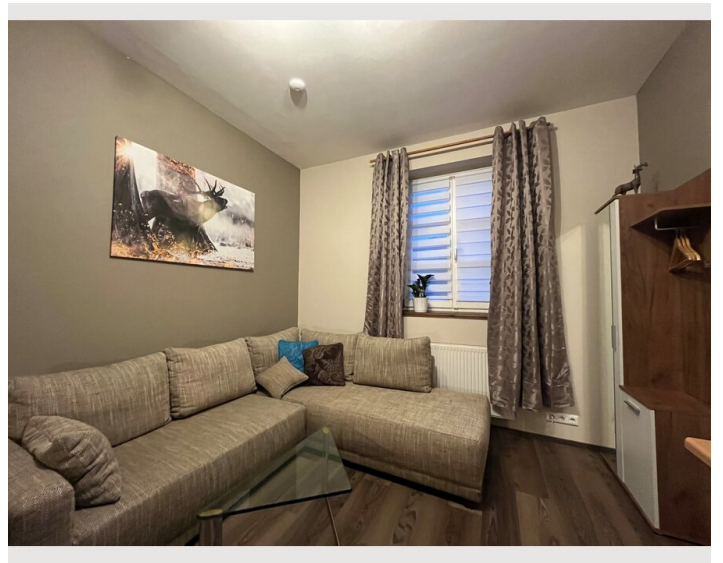
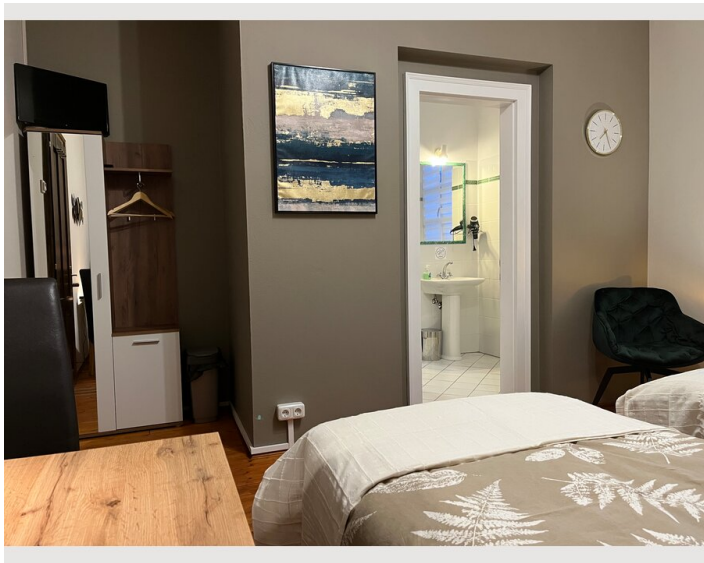
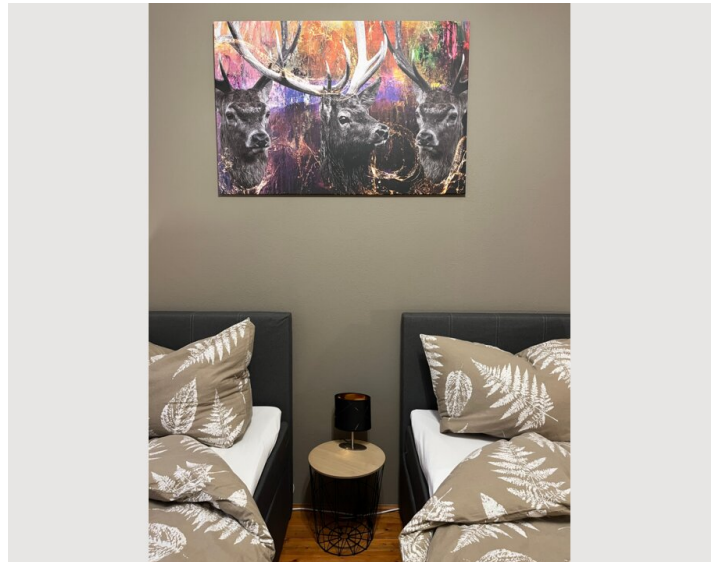
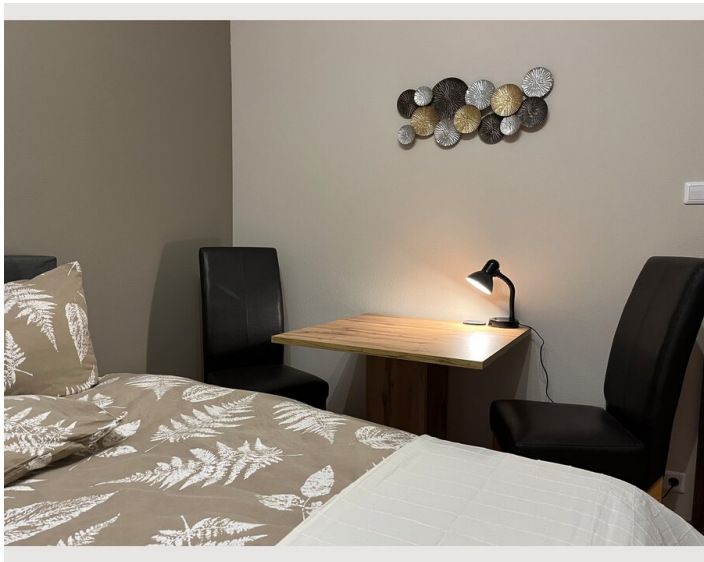
Informations

- Suitable for construction workers
- Smoking not allowed
- Private entrance
- Regular cleaning at extra cost
- Not suitable for children
- Desk/Workplace
- Pets forbidden

Picture gallery










Infrastructure

 1 minute from the apartment

 10 minutes from the property

 10 minutes from the property

 about 60 minutes away

A bus runs every 30 minutes to the main train station in the state capital St. Pölten. The bus stop is right next to the apartment. You can reach St. Pölten in a maximum of 15 minutes by car.

Gas station, grocery stores, various inns are within 10 minutes of the property.

Pyhra also has one of the most beautiful natural swimming pools with a bistro.

Vienna-Schwechat International Airport is around 60 minutes and approx. 90 km away.

Location

